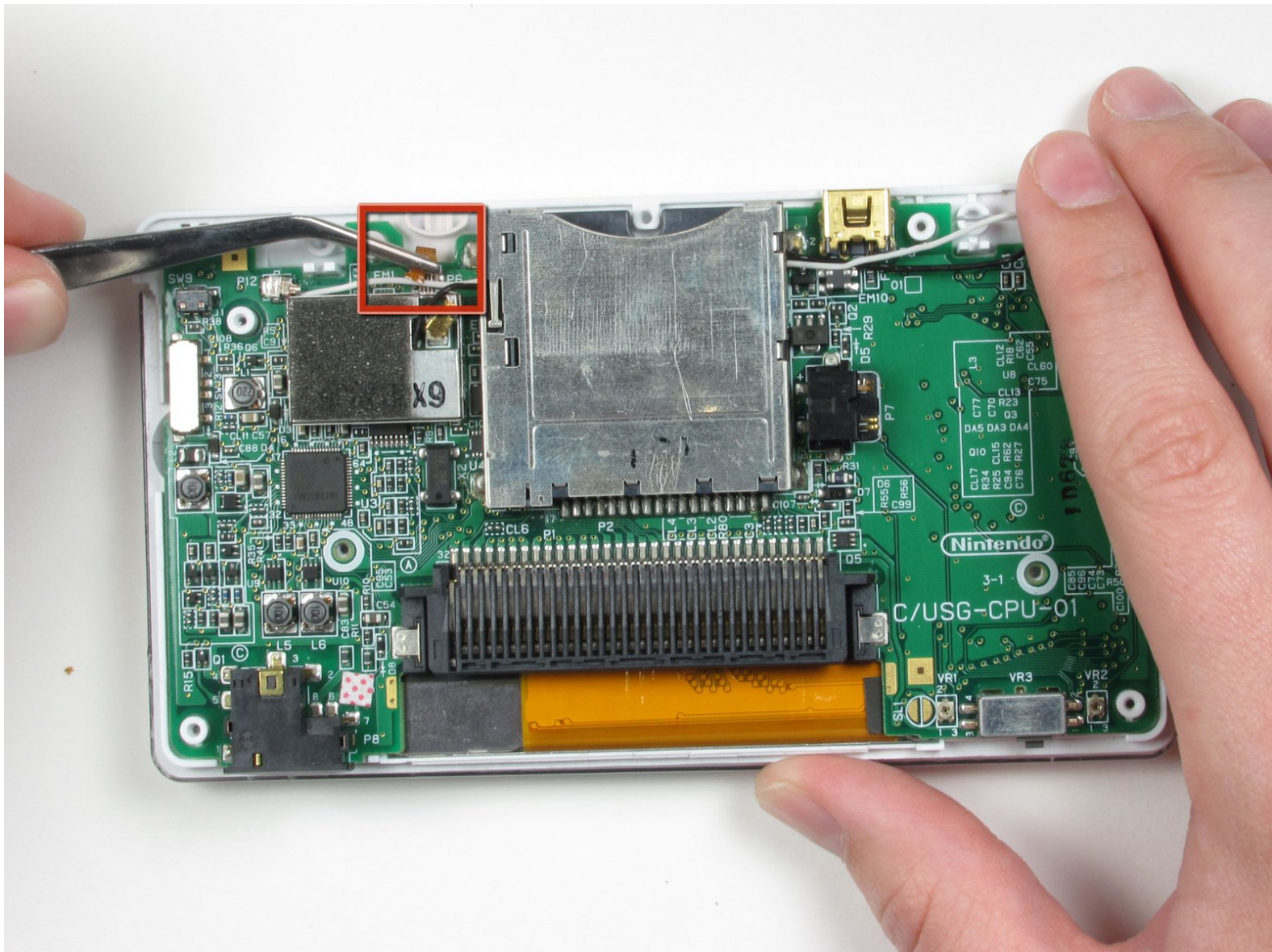




Disconnecting Nintendo DS Lite Logic Board

How to disconnect all cables from the logic board in preparation to remove it.

Written By: bushing



INTRODUCTION

This guide has been updated by iFixit staff! Read the new, official guide [here](#).

In this guide, we will carefully disconnect all the connections from the logic board to assorted peripherals.

TOOLS:

- [Tweezers](#) (1)
-

Step 1 — Battery



- Place your device upside down and locate the battery compartment.
- Find the phillips head screw securing the battery cover in the bottom right hand corner of the device.
- ✦ Loosen the screw enough to remove the battery cover but leave the screw in the cover for reassembly.
- ⓘ Use only a phillips screwdriver to remove screw.

Step 2



- Slowly remove the battery cover with the iFixit opening tool.
- ⚠ Make sure to remove the cover carefully to keep from losing phillips screw in the cover. It will be needed for reassembly.

Step 3



- Use the iFixit opening tool to carefully pry the battery out of the case.
- After the old battery is removed replace it with a new battery facing the same direction as when the cover was opened.
- ① For some devices, you may be able to remove the battery by flipping the DS over and letting the battery fall into your hand.

Step 4



- Place the battery cover on the top and gently screw in the phillips head screw to firmly secure the battery.
- ⓘ Use only the phillips screwdriver to tighten the screw.
- After this step you will have successfully replaced your Nintendo DS battery.

Step 5 — Disassembling Nintendo DS Lite Bottom Case



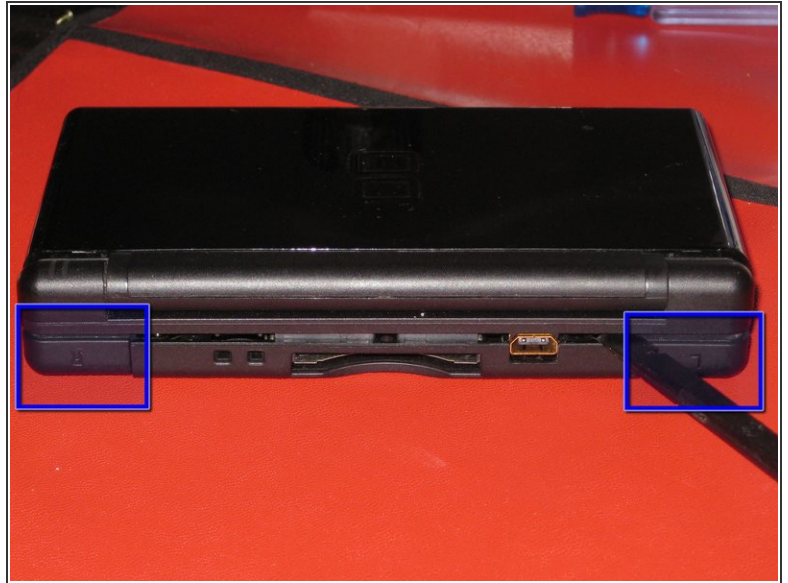
- Remove the following 7 screws securing the lower case to the DS Lite:
 - 3 silver tri-wing screws (5mm long)
 - 1 black tri-wing screw (4mm)
 - 2 gold Phillips screws (4mm)
 - 1 silver Phillips screw (3mm)
- Do not remove the silver PH screw (3mm) in the battery compartment yet. It holds the main PCB in place.

Step 6



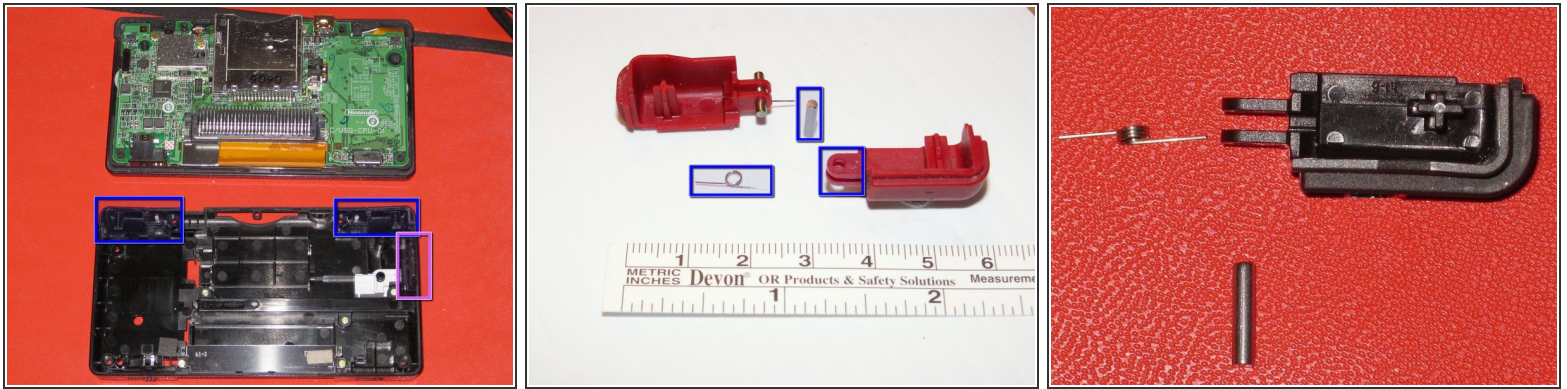
- Remove the plastic insert (or cartridge) from the lower slot (Slot 2).

Step 7



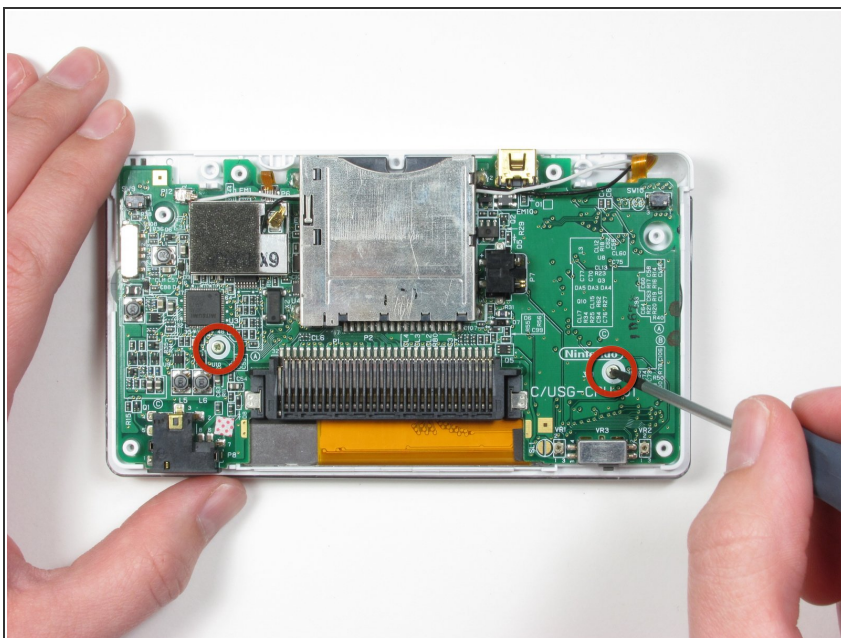
- Flip the unit over.
- Use a spudger to pry open the gap between the bottom case and the front panel. Work all the way around the case until the panel is free.
- Avoid touching the L and R shoulder buttons, because they pop off easily and are difficult to reassemble. Keeping the bottom case against your workbench will help hold them in place.

Step 8



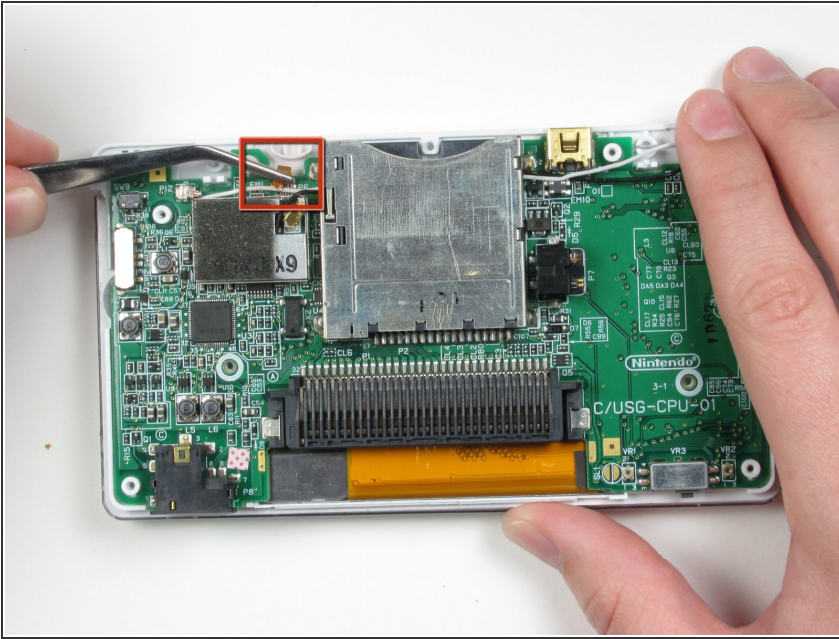
- Carefully separate the two pieces by hand.
- The two shoulder buttons are made up of three pieces -- the plastic button, a pin, and a spring. If they accidentally pop out while you are working, study the picture and make sure you put the spring in the correct position.
- When reassembling the cover, make sure that the power switch cover on the bottom case is in the off (down) position. Otherwise, the power switch cover can break the very fragile power switch upon reassembly.

Step 9 — Removing Nintendo DS Lite Logic Board Screws



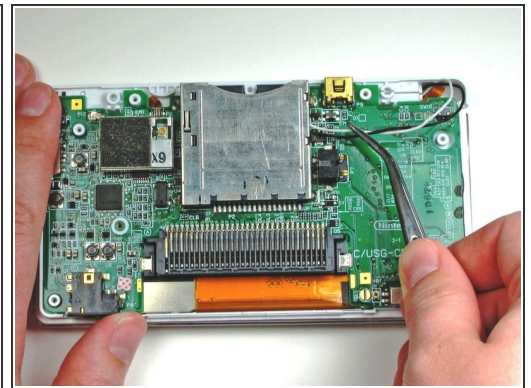
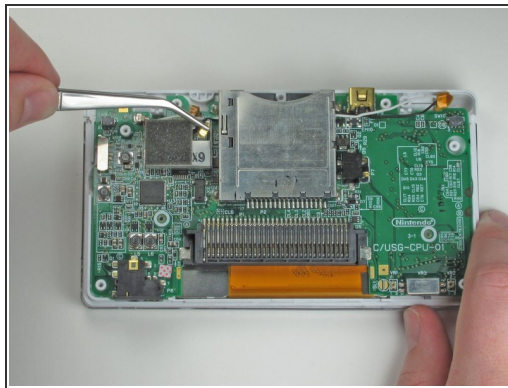
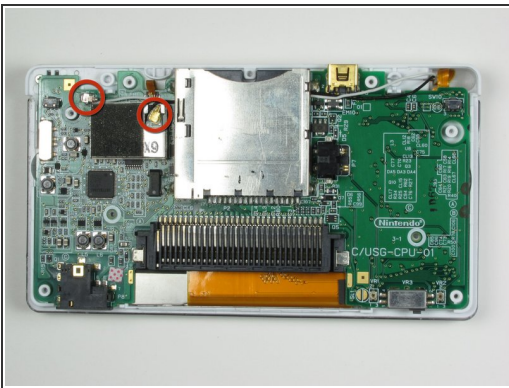
- After taking the bottom case off, remove two Phillips #00 screws that secure the logic board to the plastic case.

Step 10 — Disconnecting Nintendo DS Lite Logic Board



- Locate the small ribbon cable that connects the touch screen to the logic board.
- Using a pair of tweezers, flip the black plastic latch up to release the cable.
- Gently pull the cable straight out (towards the edge of the case).

Step 11



- Locate the black and white cables that are attached to the logic board and WiFi module.
- Using metal tweezers, gently disconnect the wires by pulling them away from the logic board and underneath the card slot.



Do not pull the wires with force; they will detach.

To reassemble your device, follow these instructions in reverse order.