



Dishwasher AEG Eco Favorit buzzes monotonously! Program does not continue!

After draining the bottom of the dishwasher everything is fine again!

Written By: www.oekollege.de



INTRODUCTION

Sketch what you are going to teach somebody and how.

Step 1 — At your own risk and responsibility



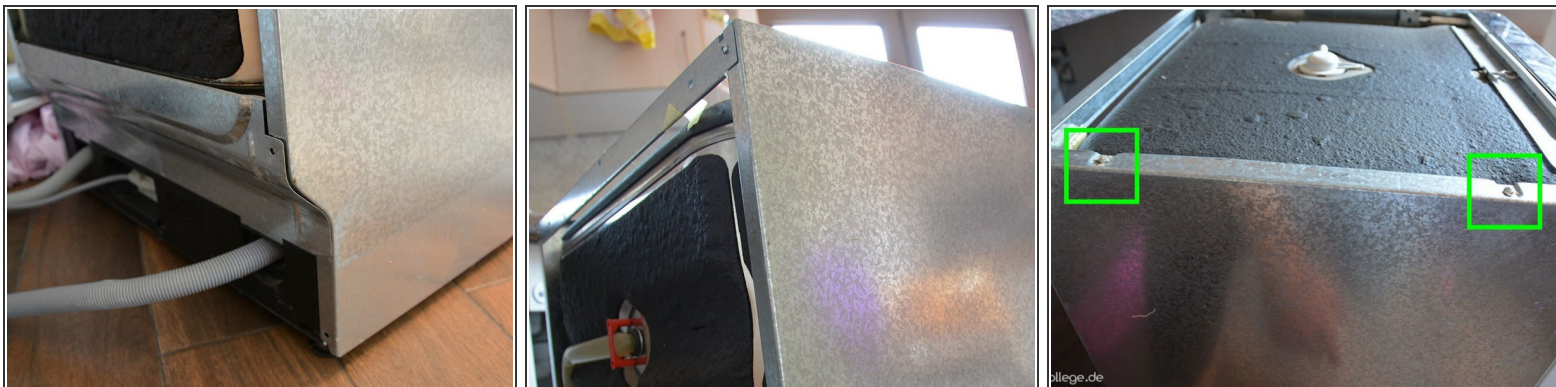
- **IMPORTANT:** The repair of your device is of course at YOUR OWN RISK and on YOUR OWN RESPONSIBILITY. I take no responsibility for the effects and effects of your actions. I can not give 100% completeness of the manual.
- Anyone who acts according to this manual, agrees with the written here. Instructions based on <http://www.gutefrage.net/frage/geschirrs> ... THANK YOU!

Step 2 — aid



- screwdriver
- old cloth (sheets)

Step 3



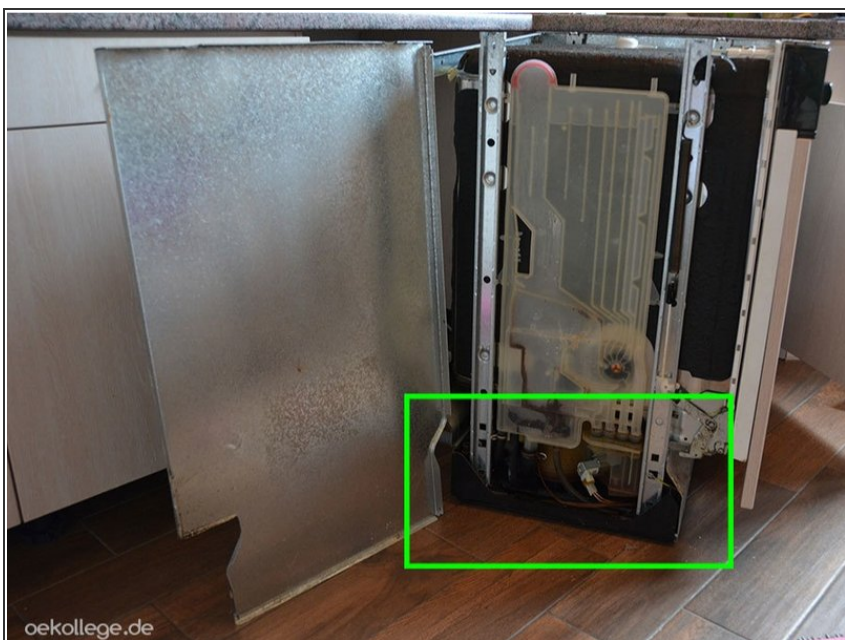
- Disconnect the power plug from the socket before repair.
- Remove left side panel ...

Step 4



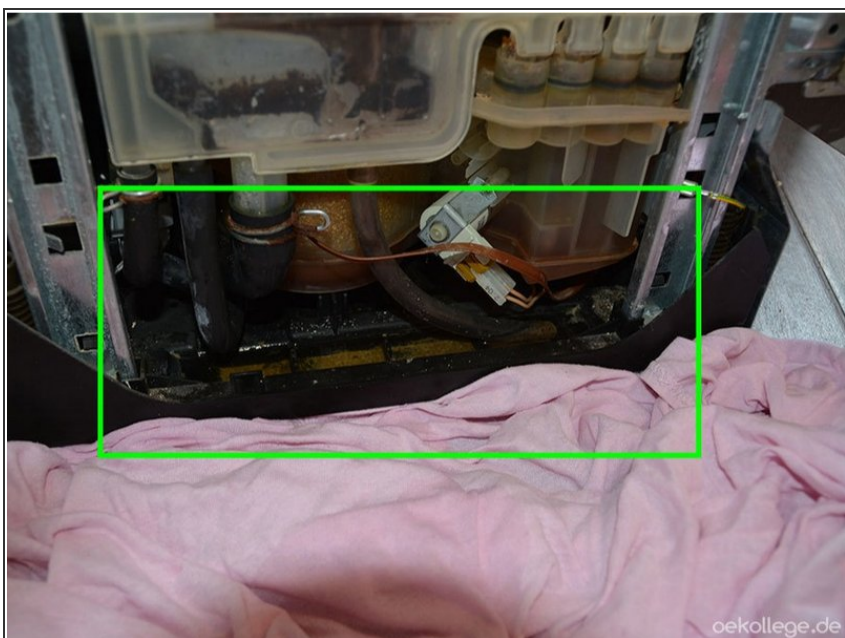
- In this picture, only 2 of the 3 screws are relevant to the side panel.

Step 5 — Openly laid



- ... remove the side panel.
- Attention: The right side of the panel is a bit tighter. Do not be shy. Simply pull out with a little more effort. It is at this point more edged (pinched).
- Now the place of grief is revealed." .

Step 6 — Water accumulation on the machine floor



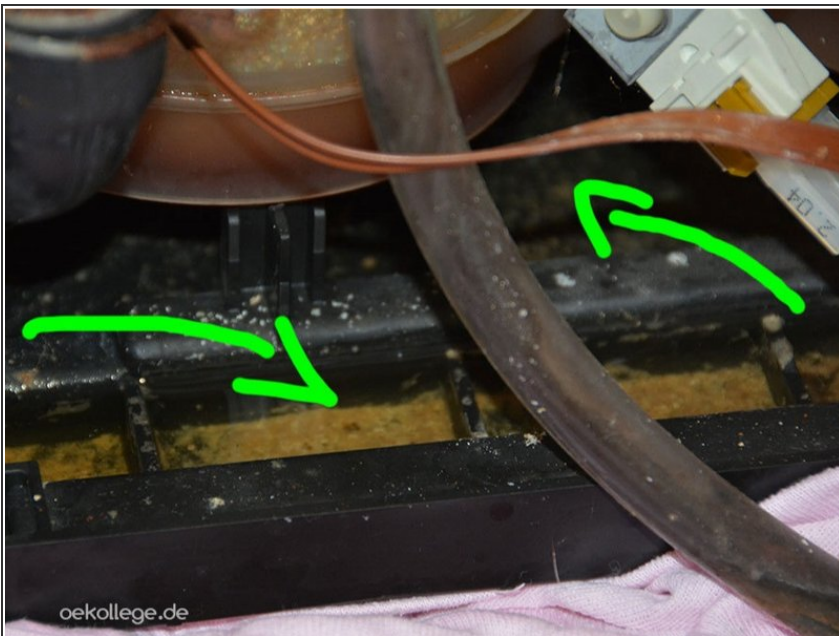
- ... A lot of excess water has accumulated at the bottom of the dishwasher. The dishwasher thinks, "If it goes on like this, I run out and the kitchen is put under water. I prefer stopping my work. "Anyway, that's how I imagine it. 'M Just repair layman

Step 7



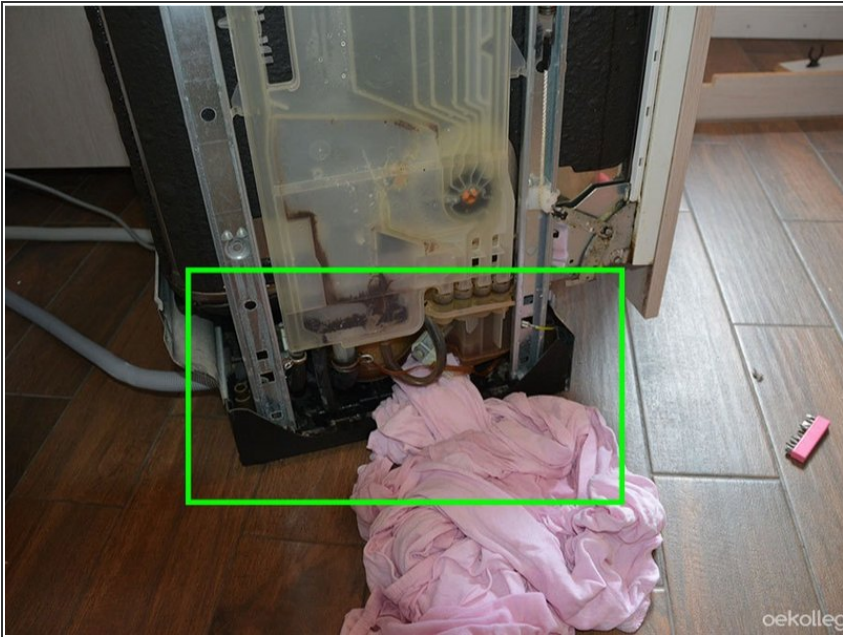
- ... The excess water apparently comes from the overflow hose (sometimes taken out of the machine: see in the middle of the green box) ...

Step 8



- Here is a close-up. Dirt and water as far as the eye can see. Fie, Pooh ...

Step 9



- ... Take your best a large sheet or a big rag (the cloth should be absorbent, otherwise you may have the soup everywhere, but not on your cloth) ...
- ... Put it just under the machine and tilt it to the open side, so that the excess water can flow from the machine floor to the cloth
- ... Not everything will run into the cloth due to the small bottom edge barrier. You have to help. Take the cloth and try to dab the remaining water on the bottom of the dishwasher. Just push yourself a little into the interior of the machine
- ...But carefully! Do not rip off any brads. I do not know if dangerous electronics (because of the discharge of capacitors) hang around. But I do not think so. Something like that would have to be properly and securely installed, so that you do not get there so quickly
- .. By the way, you can also remove the accumulated dirt, as good as possible! ...

- ... Once all this has been done, if necessary, bring the overflow hose back into its correct position and simply screw the side cover back on. Power plug in and possibly hoses again. To turn on. FINISHED! (So she ran with me anyway!)
 - Instructions based on <http://www.gutefrage.net/frage/geschirrs> ... THANK YOU!
-

Take the necessary steps in reverse order to reassemble your device.