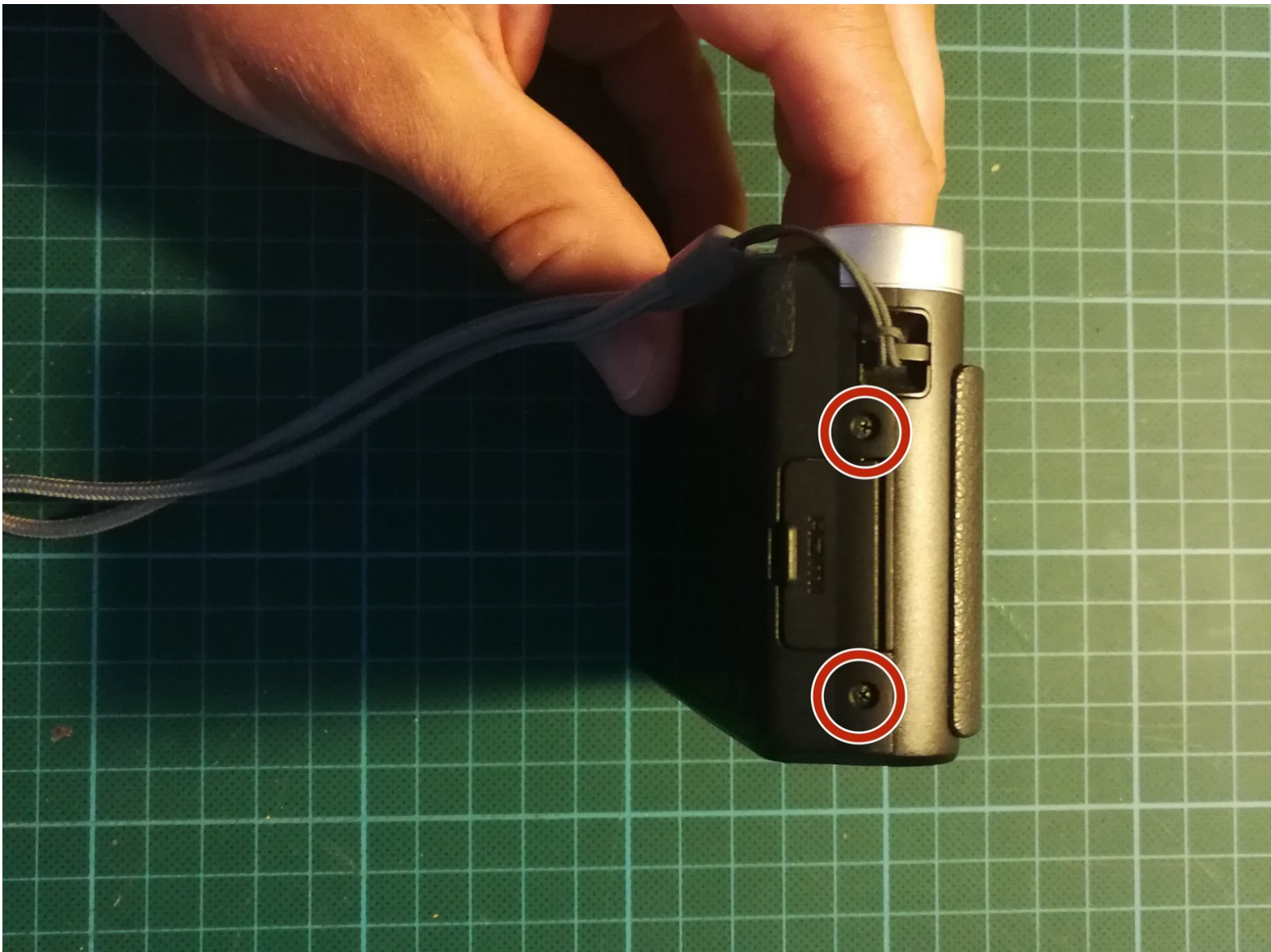




# Display Replacement Panasonic Lumix ZS50 (TZ70 or TZ71)

Changing the display of the Panasonic Lumix ZS50 and their versions outside North America TZ70 and TZ71

Written By: Johannes



**TOOLS:**

- [Phillips #00 Screwdriver](#) (1)

**PARTS:**

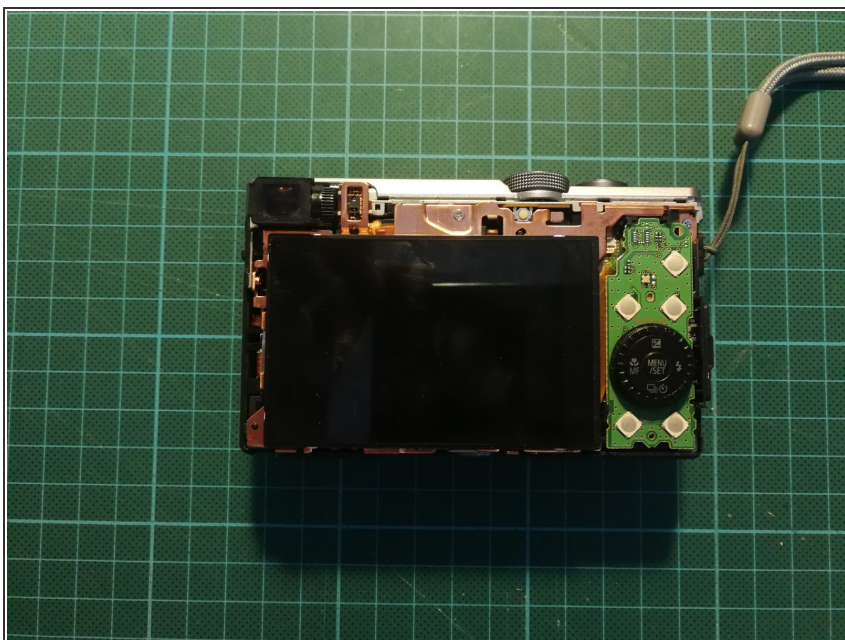
- [New Item](#) (1)

## Step 1 — Display



- Open all 7 screws with a fitting philips screwdriver.

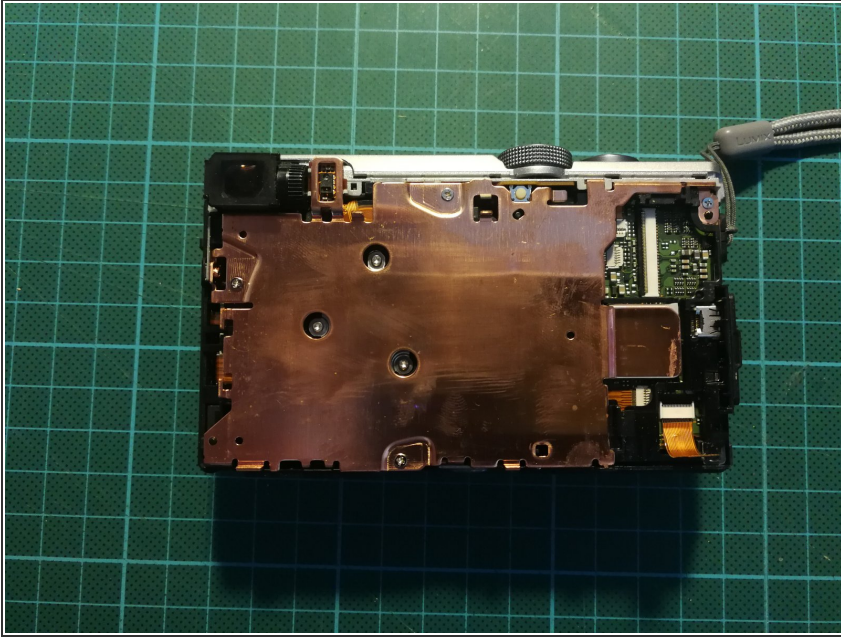
## Step 2



- The backbody is loose now, remove it carefully and it reveals the controls and the display



## Step 3



- Remove the green board with the controls first.
- DON'T USE FORCE, it should get loose easily. Don't bend the cables too much.
- Remove the cable from the control board
- Lift the display off, don't bend the cable too much.
- Open the connector of the cable carefully. Don't scratch the board and don't use too much force. Ideally, use a plastic spudger of the ifixit-kit
- The display got removed, not just fit the new display in reversed order.

Do the steps backwards to build the Camera together again.