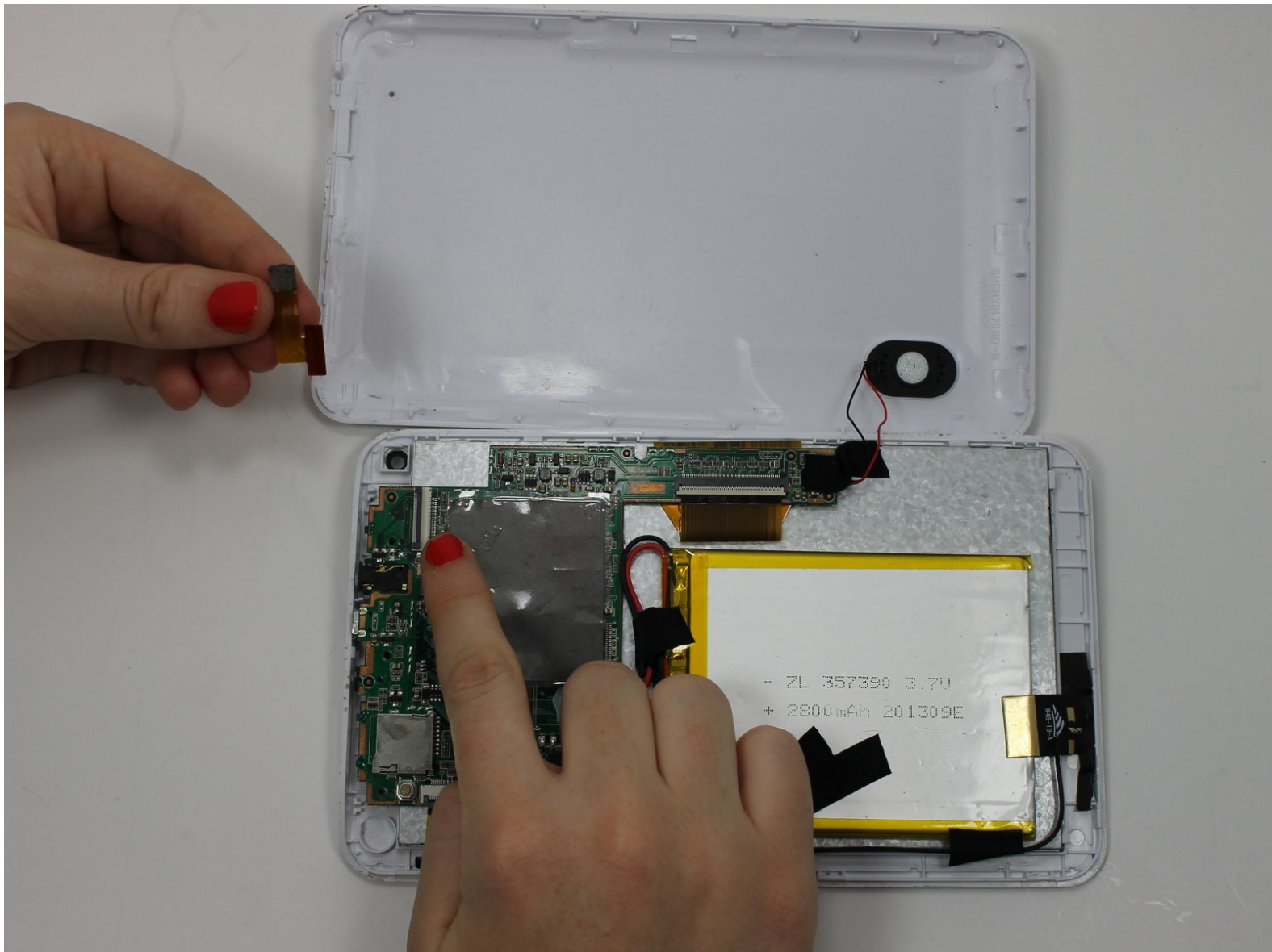




Dreamax DMX-ST7A Camera Replacement

This guide will help a user replace a broken front-facing camera.

Written By: Stacey Mattila



INTRODUCTION

The type of front facing camera that the tablet requires is a 0.3 MP. The video on the tablet uses 30fps 720p(MPEG-4/H.264).



TOOLS:

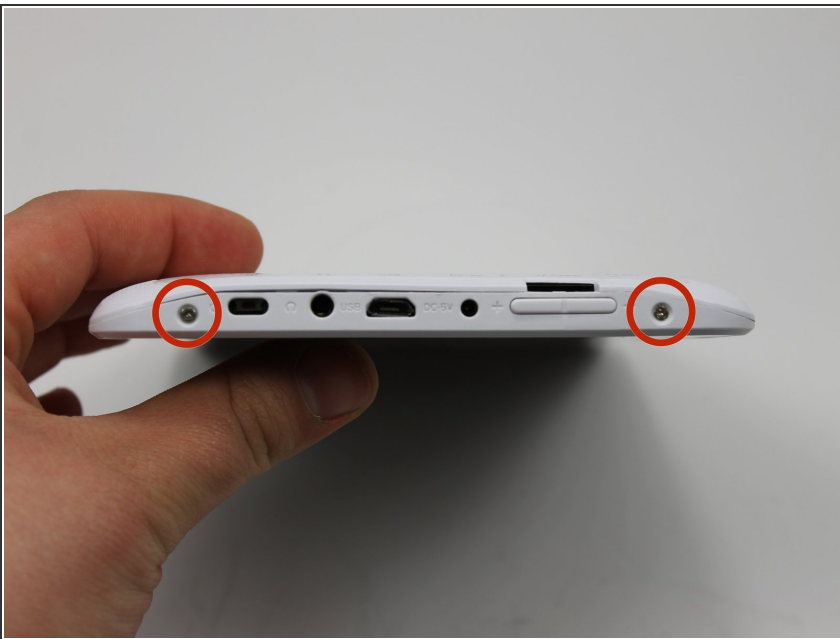
- [Phillips #00 Screwdriver](#) (1)
 - [iFixit Opening Tools](#) (1)
-

Step 1 — Back Cover



- Position the tablet so the ports and screws are facing you.

Step 2



- Remove the two 2.5mm screws using the Phillips #00 precision screwdriver.

Step 3



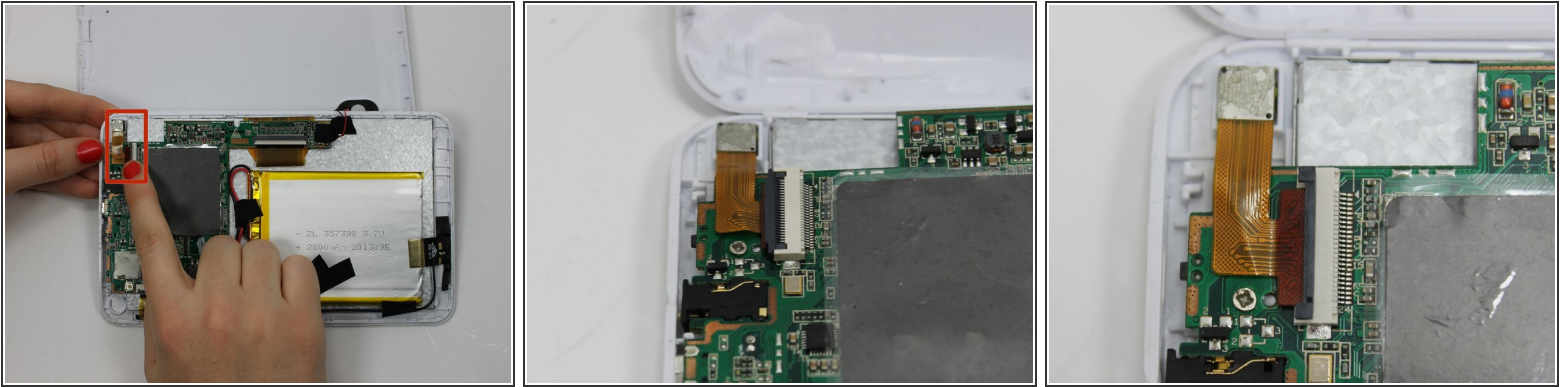
- Use the plastic opening tool to assist in removing the back cover.

Step 4



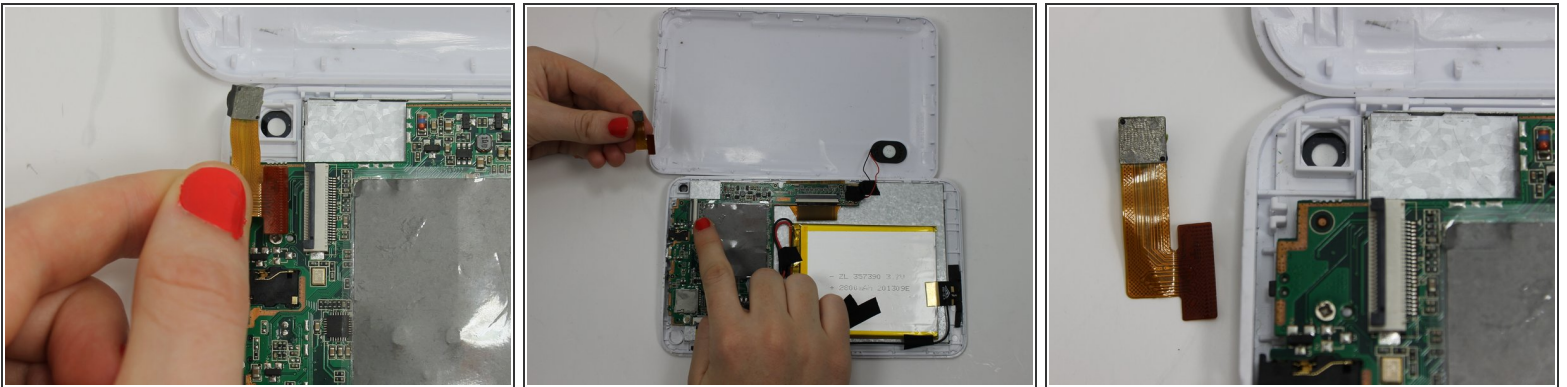
- Upon removing the back cover position the tablet as seen in the picture.

Step 5 — Camera



- Lift the black bar towards the right to expose the data strip.

Step 6



- Remove the data strip and camera.

To reassemble your device, follow these instructions in reverse order.