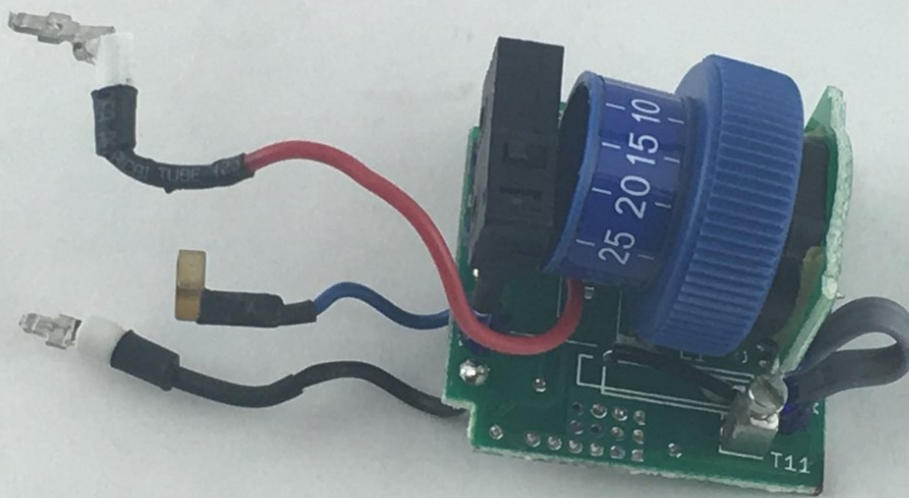




# Dremel 4000 Electrical Assembly Replacement

This guide will demonstrate how to replace the electrical assembly in a Dremel 4000.

Written By: John Cobb



# INTRODUCTION

This guide will demonstrate how to replace the electrical assembly in a Dremel 4000.



## TOOLS:

- [Flathead 3/32" or 2.5 mm Screwdriver](#) (1)
- [iFixit Opening Tools](#) (1)
- [T15 Torx Screwdriver](#) (1)



## PARTS:

- [Electrical Assembly](#) (1)

## Step 1 — Back Case



- Start by removing the housing cap by unscrewing it.
- Next, unscrew the now exposed collet nut while holding down the shaft lock button.
- **i** To remove the collet nut, you may need to use the small open-end wrench provided with the Dremel.

## Step 2



- Using your hands, carefully remove hanger from casing.

## Step 3



- Remove the brush caps (one on each side) by using a flathead screwdriver bit.
- ⓘ The brush caps are spring loaded.

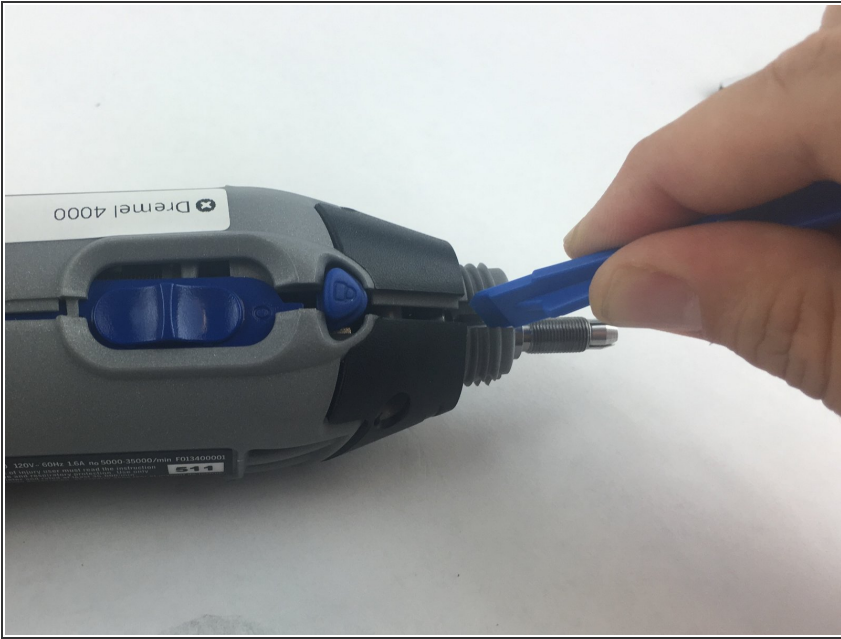
## Step 4



- Using the Torx 15 screwdriver tip, remove the 5 screws (12.5 mm) that hold the casing together.

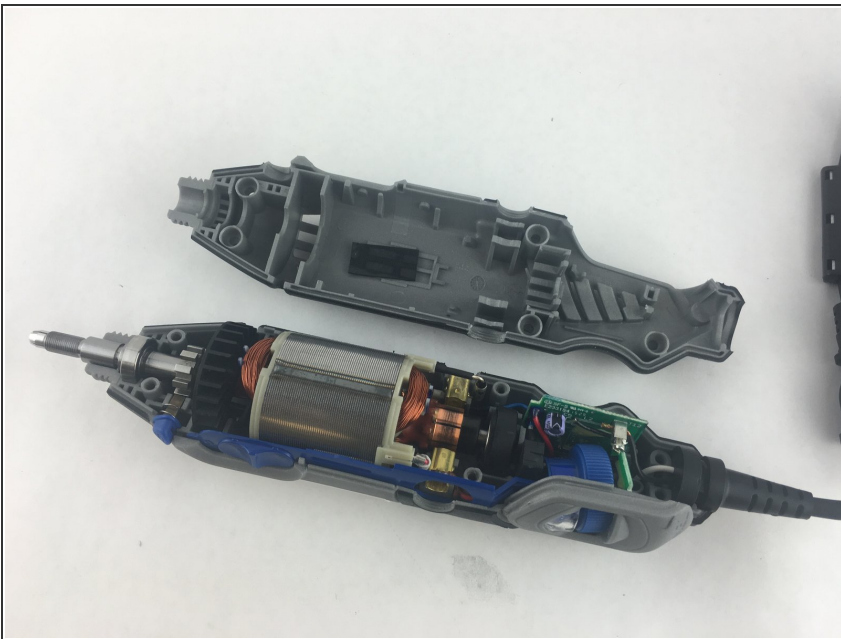


## Step 5



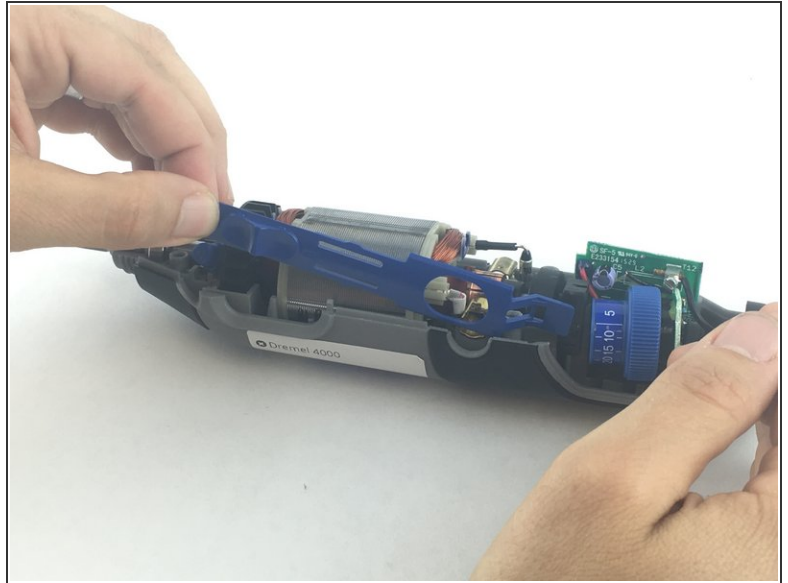
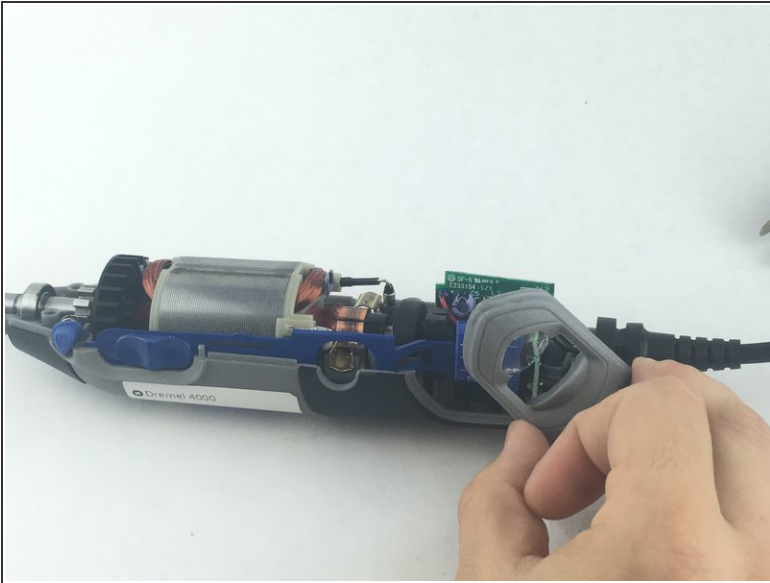
- Use a plastic opening tool to gently wedge apart the hard plastic threads.

## Step 6



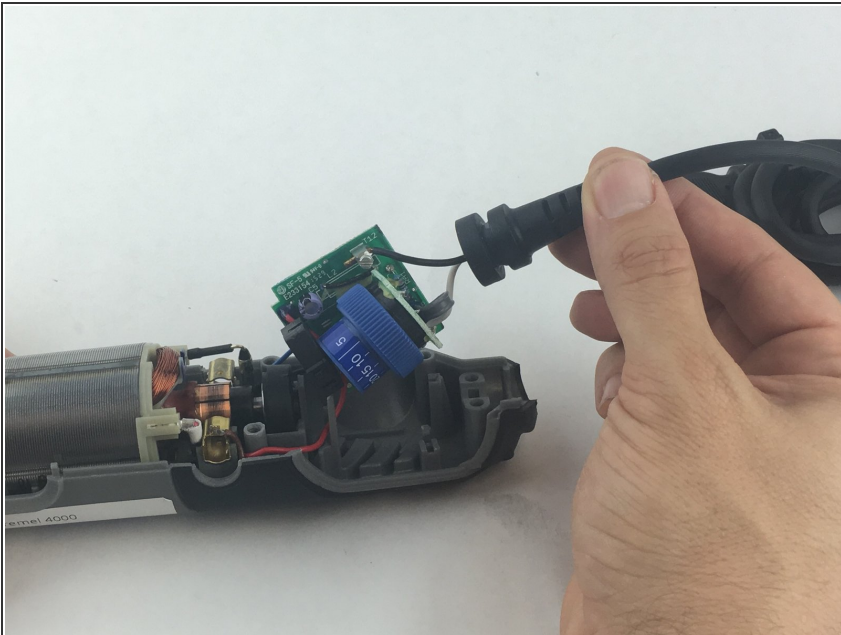
- Use your hands to carefully remove the back casing so that none of the components fall out.

## Step 7 — Power Cord



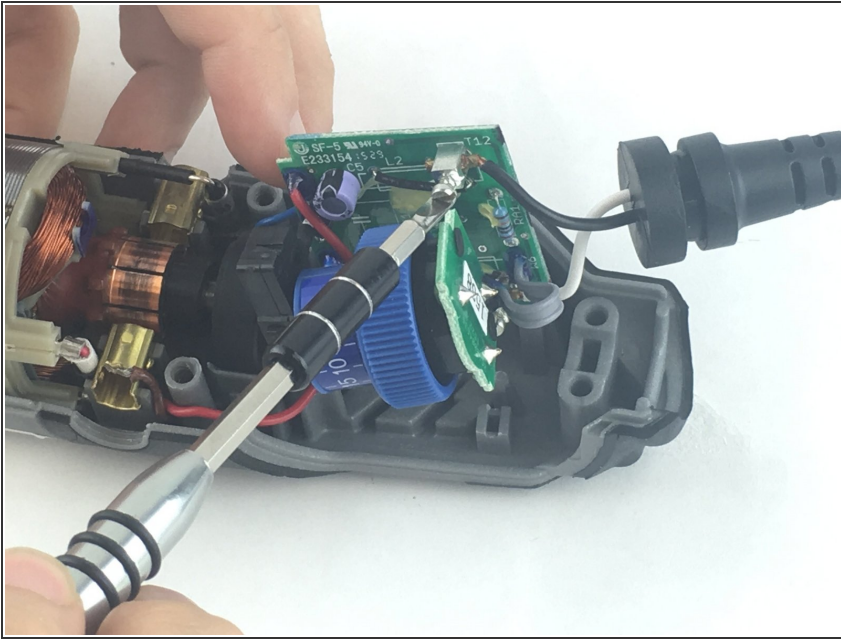
- To clear access to the electrical assembly, remove the variable speed dial cap and blue power lever, and set them aside.

## Step 8



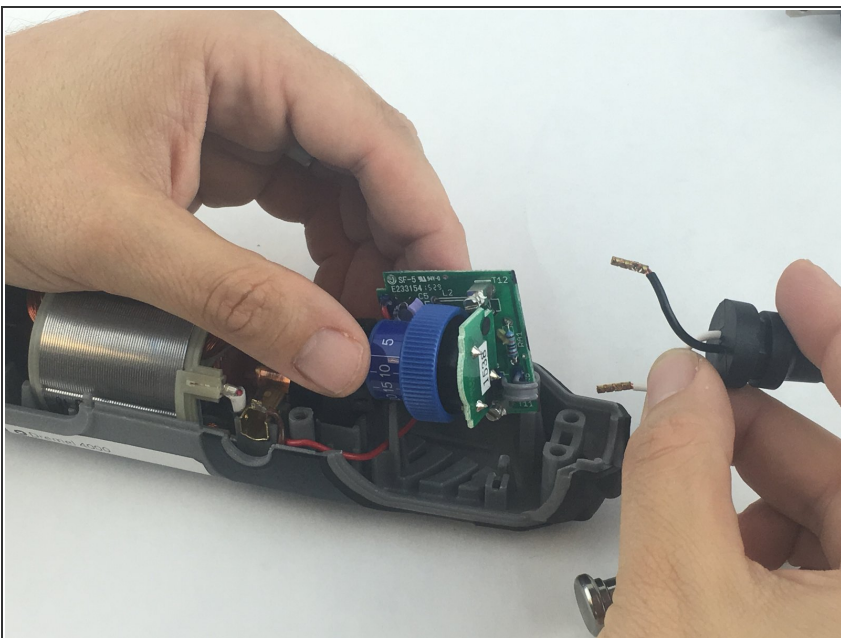
- Using your fingers, carefully pull the circuit board from the casing. This will make it easier to remove the power cord.

## Step 9



- Each wire is fed through a small opening on the circuit board and held with a flat head screw.
- Loosen the screw just enough to remove the wire by gently pulling it with your hand.

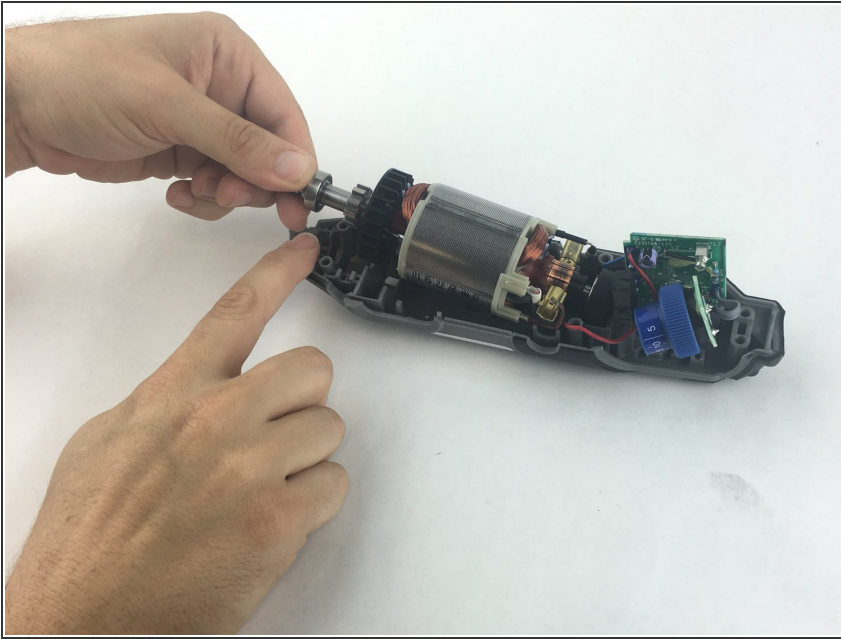
## Step 10



- Carefully remove both wires from circuit board with your hands.
- ⓘ Take careful note of which side has the black wire and which has the white wire.

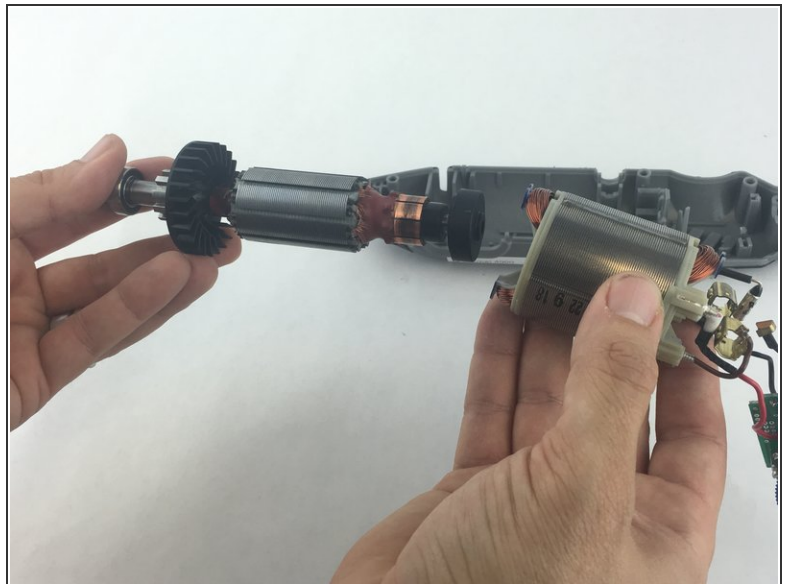
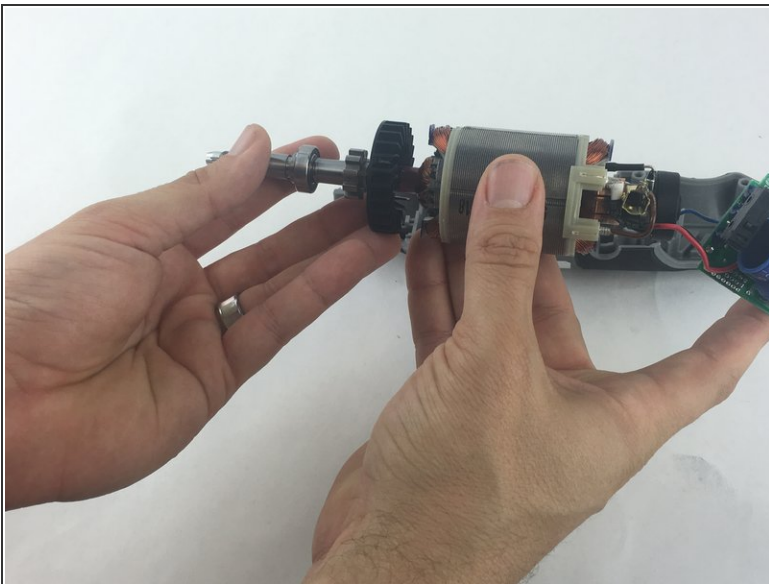


## Step 11 — Bearing Assembly



- Carefully pull up on the shaft to lift out of the casing.

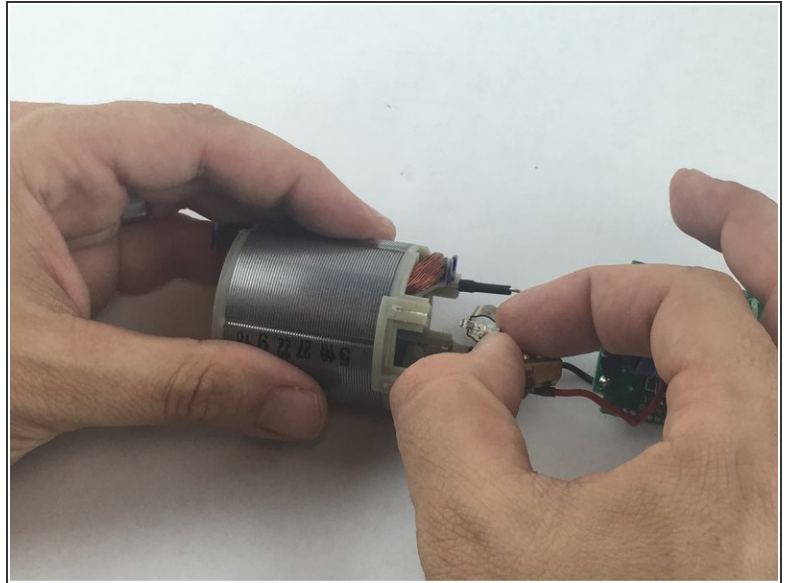
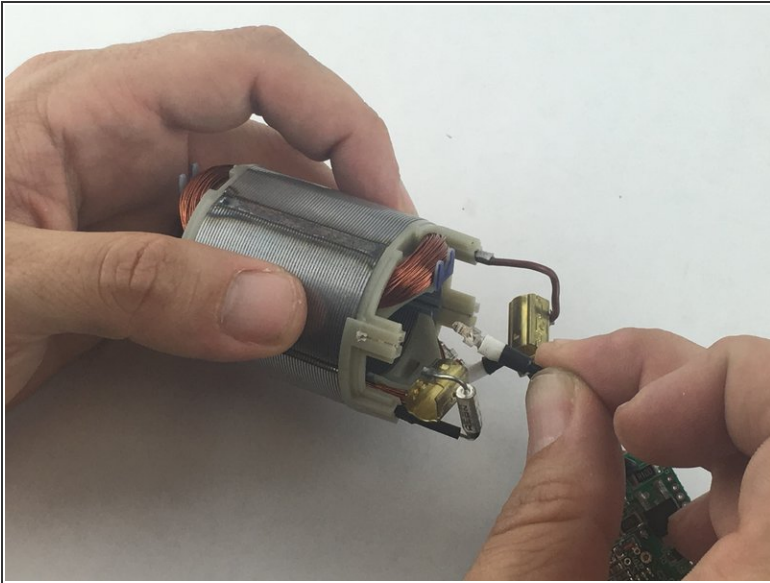
## Step 12



- Firmly hold the field assembly in one hand and the bearing assembly in the other.
- Carefully slide the bearing assemble out of the field assembly.

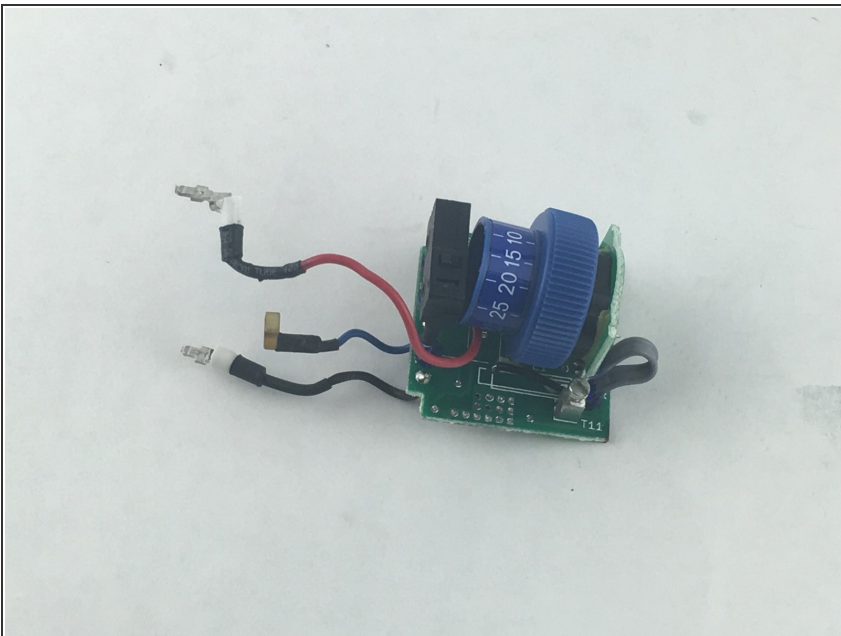


## Step 13 — Electrical Assembly



- Firmly hold the field assembly in one hand, and carefully pull free the red and black wires that connects the electrical assembly to the field assembly.
- ⓘ Take note which slot gets the red wire and which gets the black wire for proper reassembly.

## Step 14



- This is your completely removed electrical assembly.

To reassemble your device, follow these instructions in reverse order.