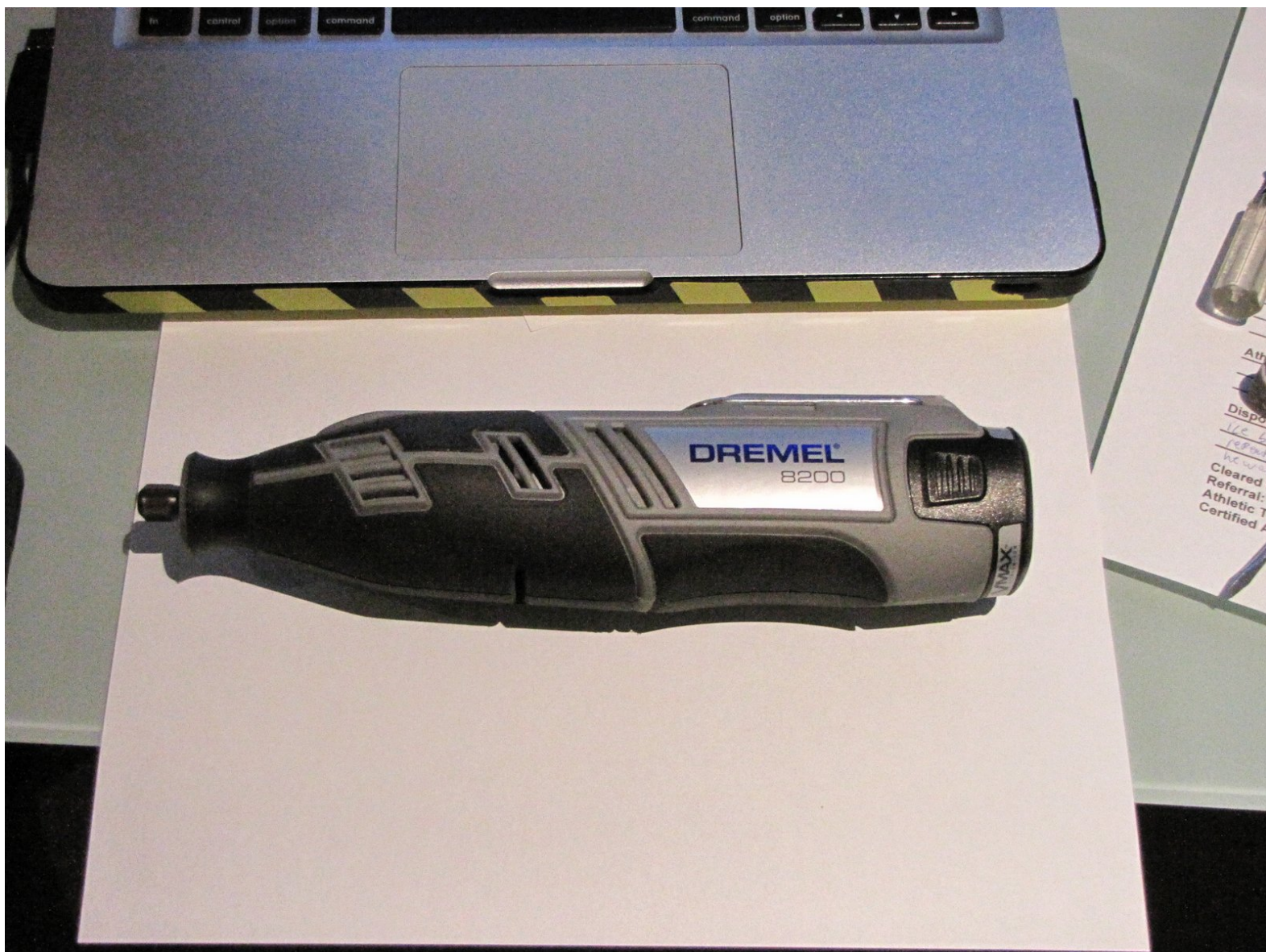




Dremel 8200 Disassembly

Disassembling your Dremel 8200.

Written By: mitchellbarnhart



INTRODUCTION

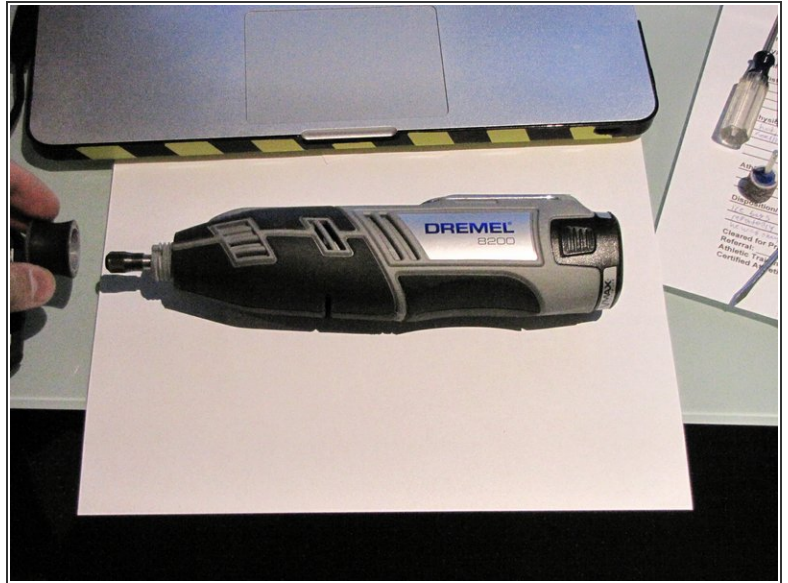
Disassembling your Dremel 8200.



TOOLS:

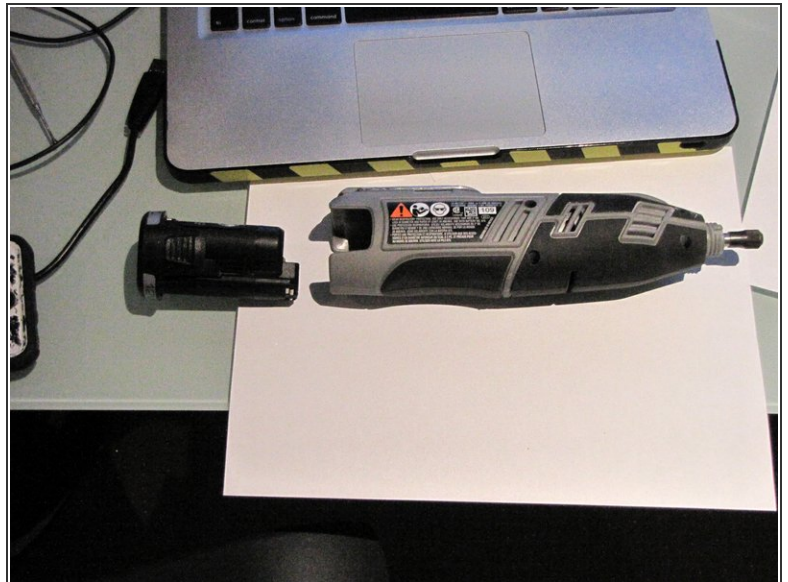
- [Phillips #0 Screwdriver](#) (1)
-

Step 1 — Dremel 8200 Disassembly



- Take off the screw cap at the top

Step 2



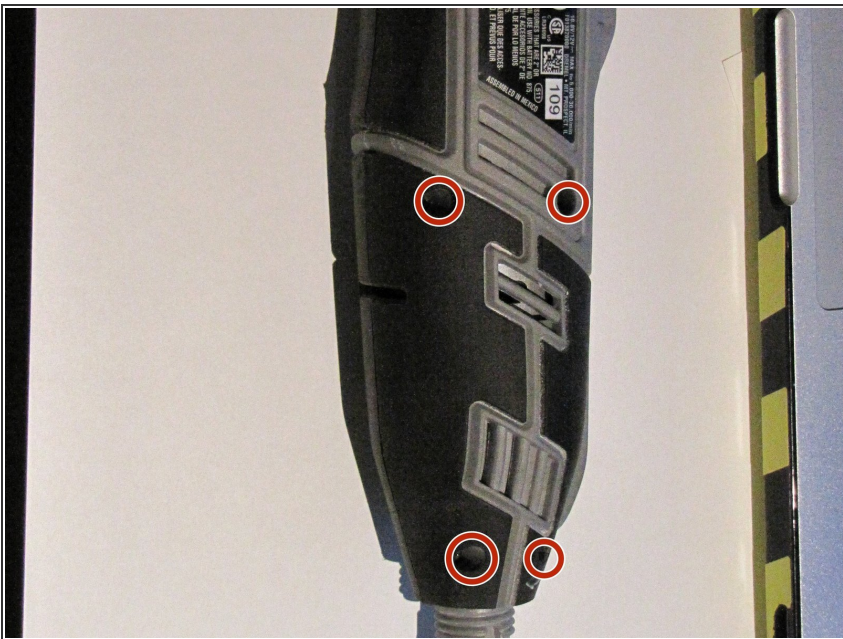
- Take out the battery

Step 3



- Remove oblong belt clip

Step 4



- Unscrew screws

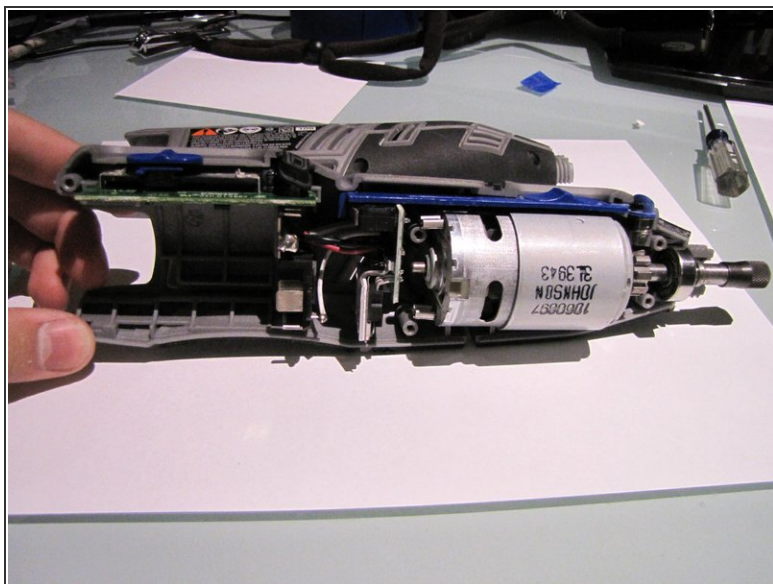
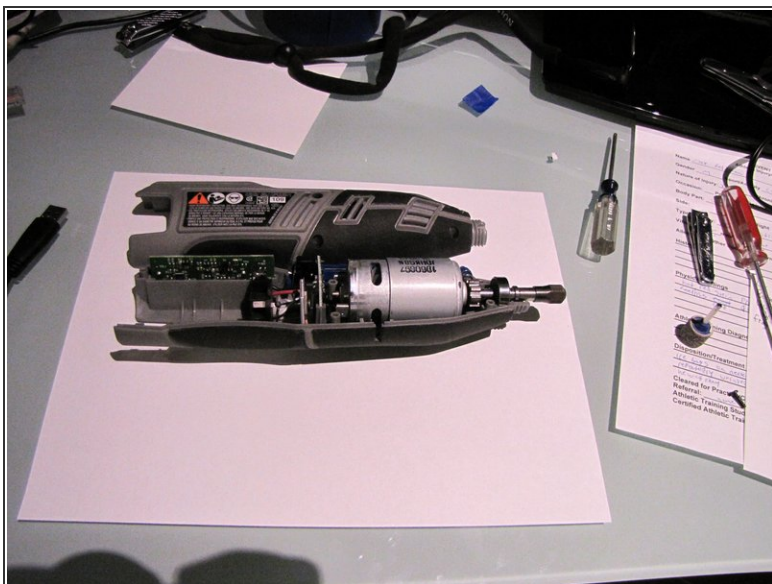
Step 5



- Take back u clip out carefully

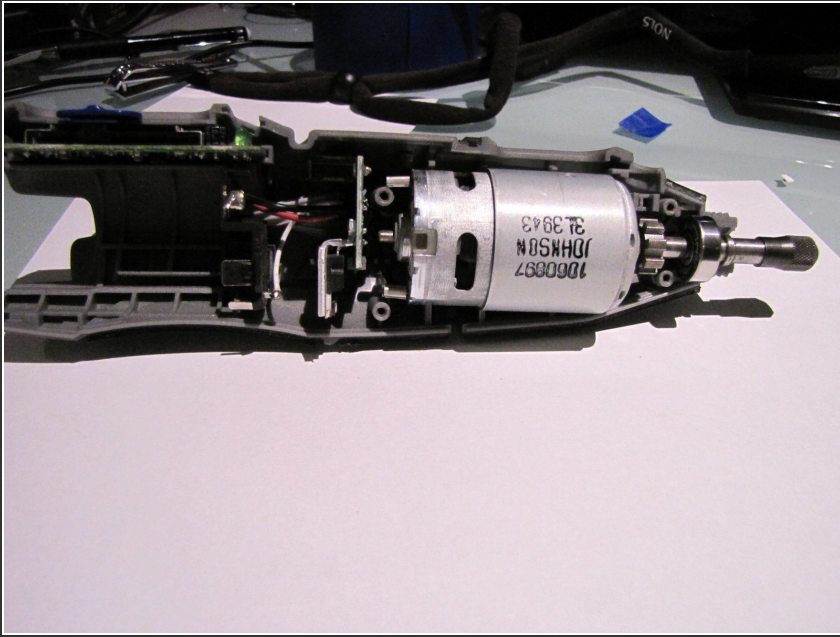
⚠ Be very careful to not injure yourself

Step 6



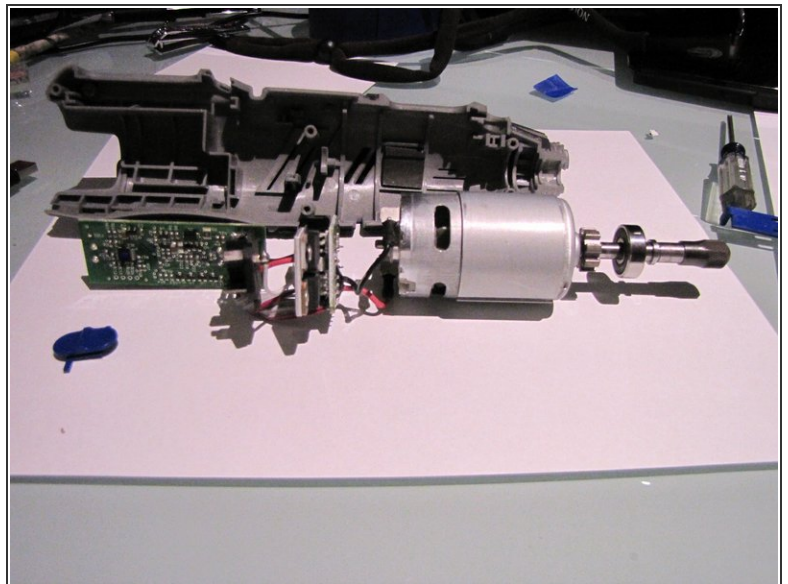
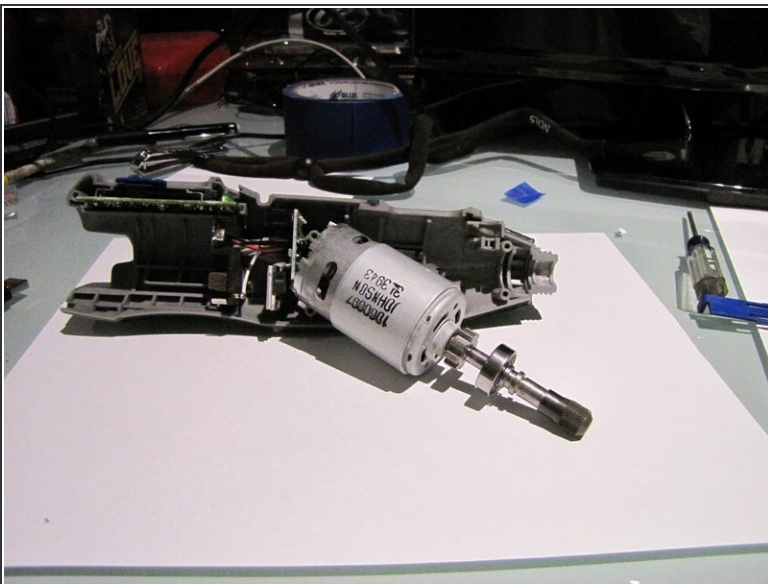
- The casing should just open right up and be easily accessible

Step 7



- You can remove the buttons except for the sliding one that adjusts the speed

Step 8



- ① You can take the motor out first and it will be a little hard to do so
 - Work your way down and take out each successive circuit board
 - The last thing to be out should be the sliding speed adjustment and the button for that should fall right out

To reassemble your device, follow these instructions in reverse order.