



# Dremel 8220 Gear Lock Button Replacement

This guide will show you how to replace a broken gear lock button.

Written By: connor anisko



---

## INTRODUCTION

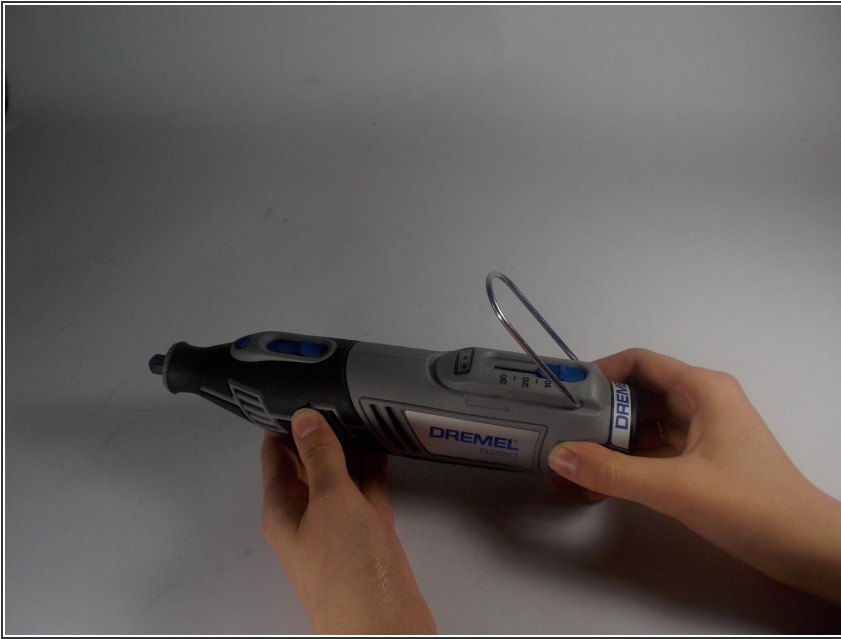
This guide will show you how to replace a defective gear lock button. With only a few steps and a few tools you will be able to open up the device and gain access to the faulty button. The button can then be easily swapped out for a new one.

---

### **TOOLS:**

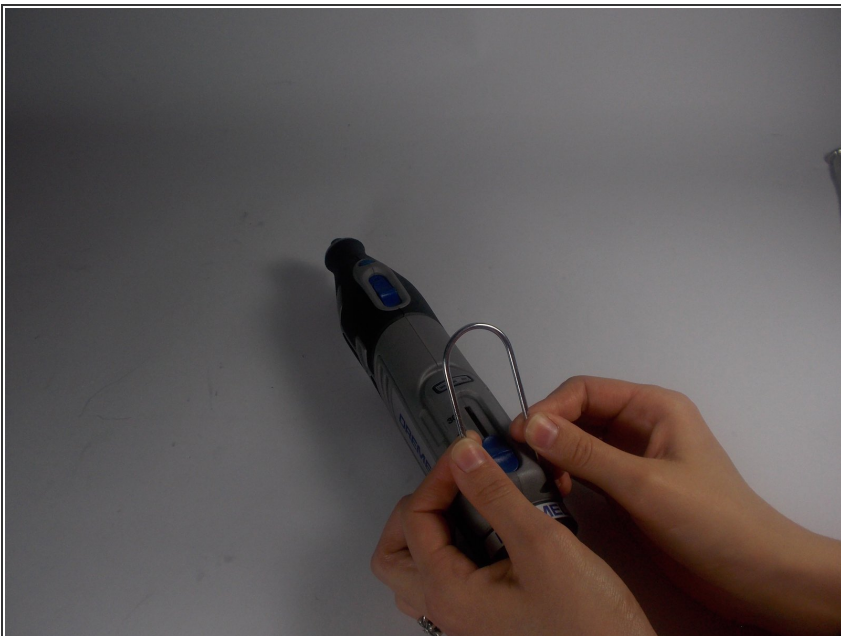
- [T9 Torx Screwdriver](#) (1)
-

## Step 1 — Gear Lock Button



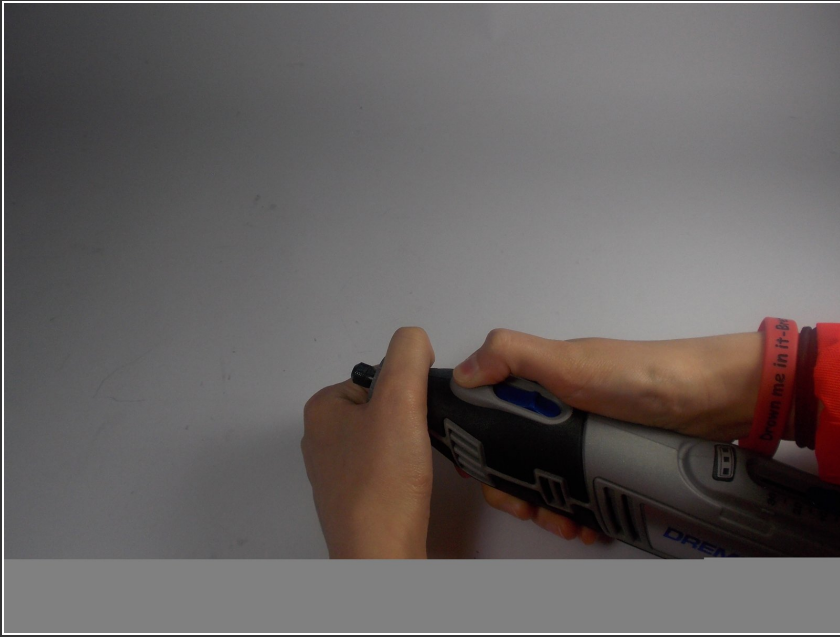
- Locate the battery at the back of your Dremel. Firmly grasp the battery on both sides and pull. It should easily come out of the battery well.

## Step 2



- Remove the ring located around the speed selector switch by pulling apart on either side. This should require very minimal force.

## Step 3



- Remove the collar wrench by pushing the gear lock button. Continue to hold this button as you rotate the wrench counter-clockwise until it is removed.

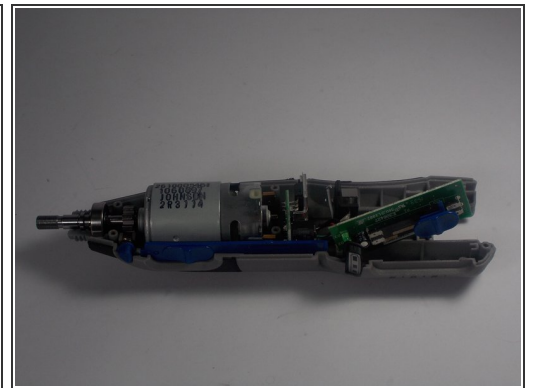
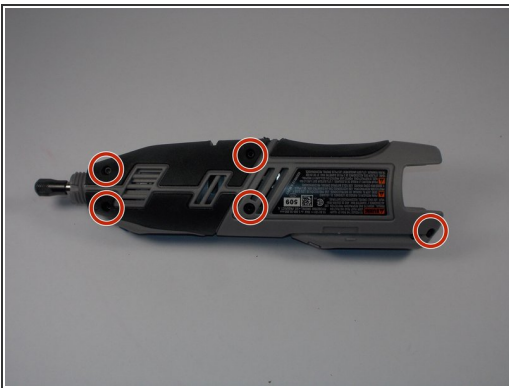


## Step 4



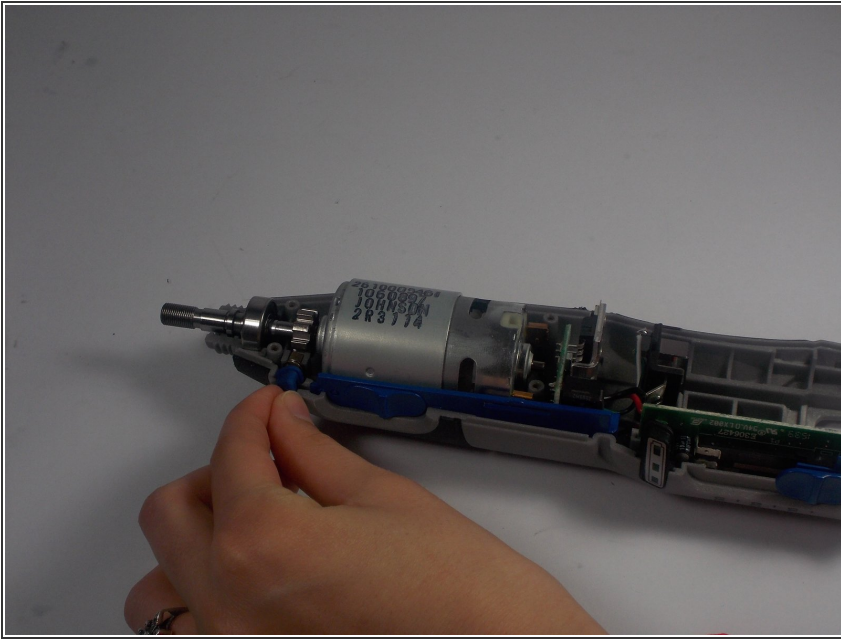
- Remove the metal clasp from the battery well. This piece helps hold the plastic shell of the device together. Pry it out by gently applying some force with a screwdriver.

## Step 5



- Remove the 5 torx screws using a t9 screwdriver head.
- i** Now pull apart the plastic shell of the device. If you are not able to, review the previous steps as you may have missed one.

## Step 6



- Remove the faulty gear lock button. It should come out of the device easily with no force needed.

To reassemble your device, follow these instructions in reverse order.