



Dremel 8220 Motor Replacement

This guide will help you replace your defective Dremel 8220 motor with a new one.

Written By: Shailing Santiago



INTRODUCTION

This guide will show you how to replace a defective motor. With a few steps and a some tools, you will be able to open up the device and gain access to the motor. The motor can then be easily swapped out for a new one so that it can start working again.

TOOLS:

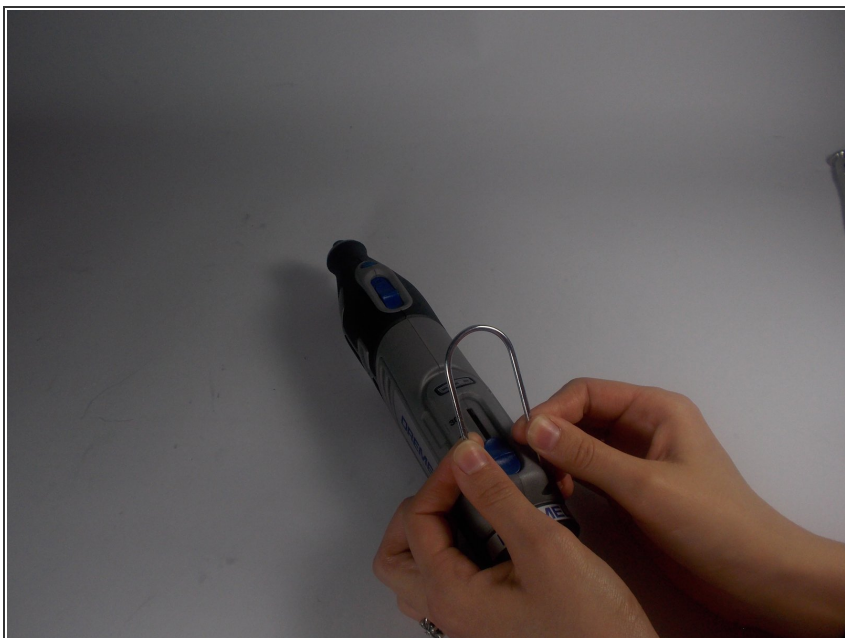
- [T9 Torx Screwdriver](#) (1)
-

Step 1 — Motor



- Locate the battery at the back of your Dremel. Firmly grasp the battery on both sides and pull. It should easily come out of the battery well.

Step 2



- Remove the ring located around the speed selector switch by pulling apart on either side. (This should require very minimal force.)

Step 3



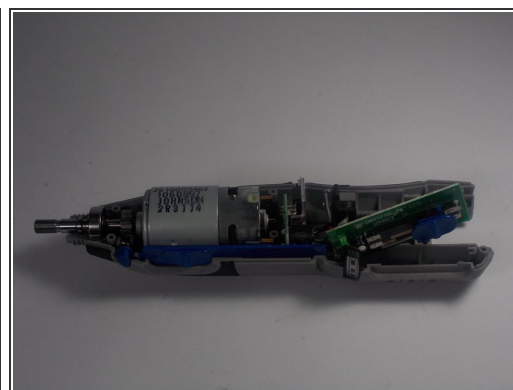
- Remove the collar wrench by pushing the gear lock button. Continue to hold this button as you rotate the wrench counter-clockwise until it is removed.

Step 4



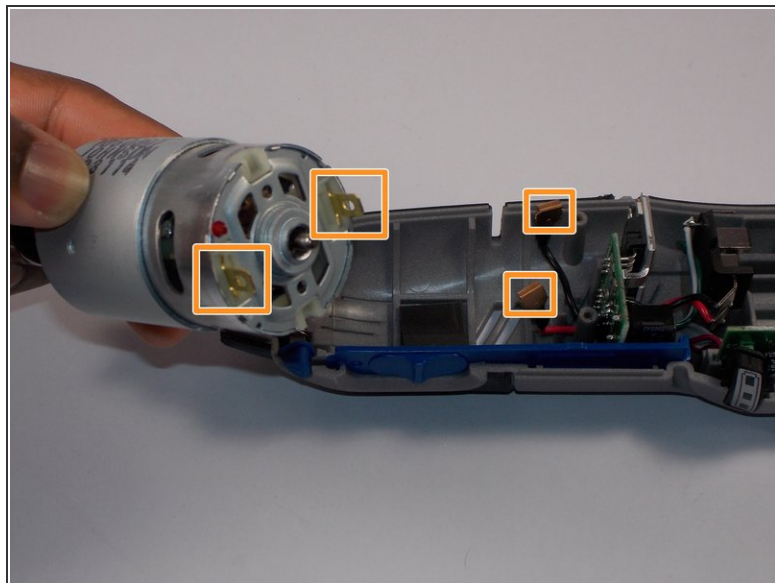
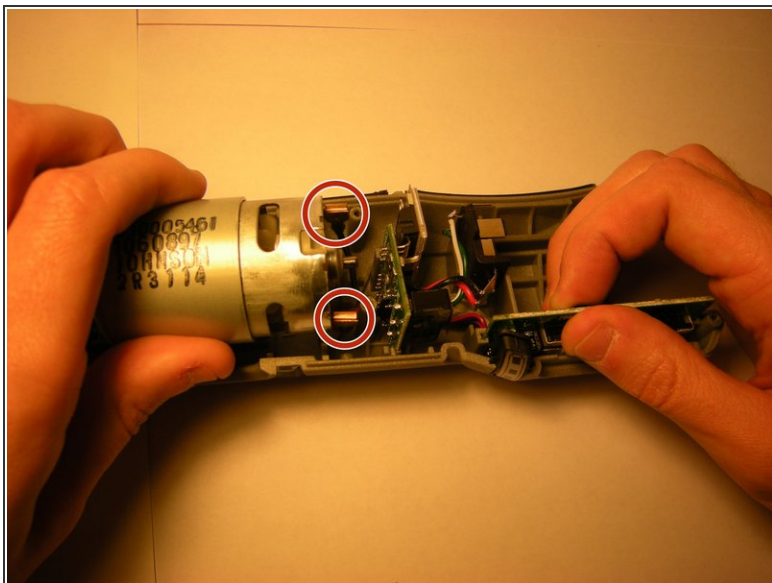
- Remove the metal clasp from the battery well. This piece helps hold the plastic shell of the device together. Pry it out by gently applying some force with a spudger.

Step 5



- Remove five 10.5 mm Torx T9 screws.
- i** Now pull apart the plastic shell of the device. If you are not able to, review the previous steps as you may have missed one.

Step 6



- Remove broken motor. Lift out the motor until you can see the wires that connect to it.
- Remove the clips where the wires connect with the motor. This can be done with your fingers or a pair of tweezers.
- ☑ You should then be able to reconnect a new motor and reassemble the device.

To reassemble your device, follow these instructions in reverse order.