



# Driver Side Mirror Replacement on 2002 Chevrolet Tahoe

Use this guide when replacing the driver side mirror on a 2002 Chevrolet Tahoe.

Written By: Kyle Vallans



## INTRODUCTION

This guide will provide you with the necessary steps in order to replace the driver side mirror of a 2002 Chevrolet Tahoe. A common occurrence on this make is for the driver side mirror to fog over time and become unusable unless replaced. Many dealerships will try to persuade you into replacing the entire mirror module but that is unnecessary and costly.



### TOOLS:

- [Flathead 3/32" or 2.5 mm Screwdriver](#) (1)



### PARTS:

- [Driver Side Mirror Replacement GM1324108](#) (1)

## Step 1 — Driver Side Mirror on 2002 Chevrolet Tahoe



- Turn the mirror in towards the vehicle allowing access to the left side of the mirror.
- ⓘ This can be done either electronically from the inside of the vehicle or manually by applying force to the mirror.

## Step 2



- Insert the screwdriver on the left side of the mirror and apply force to release.

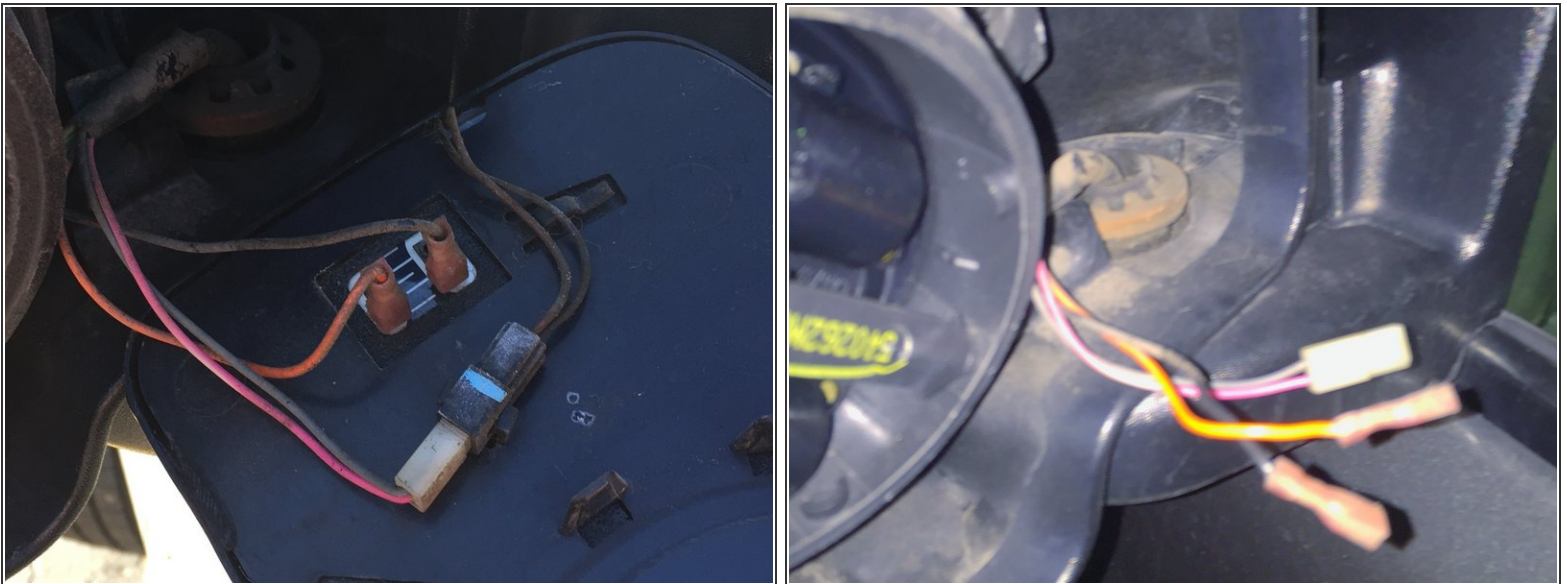


### Step 3



- Insert the screwdriver on the top of the mirror and apply force to release this section.
- Repeat this step for the bottom portion along with the side of the mirror.

### Step 4



- Unclip all three wires and remove the old mirror from the module.

To reassemble your new mirror, follow these instructions in reverse order.