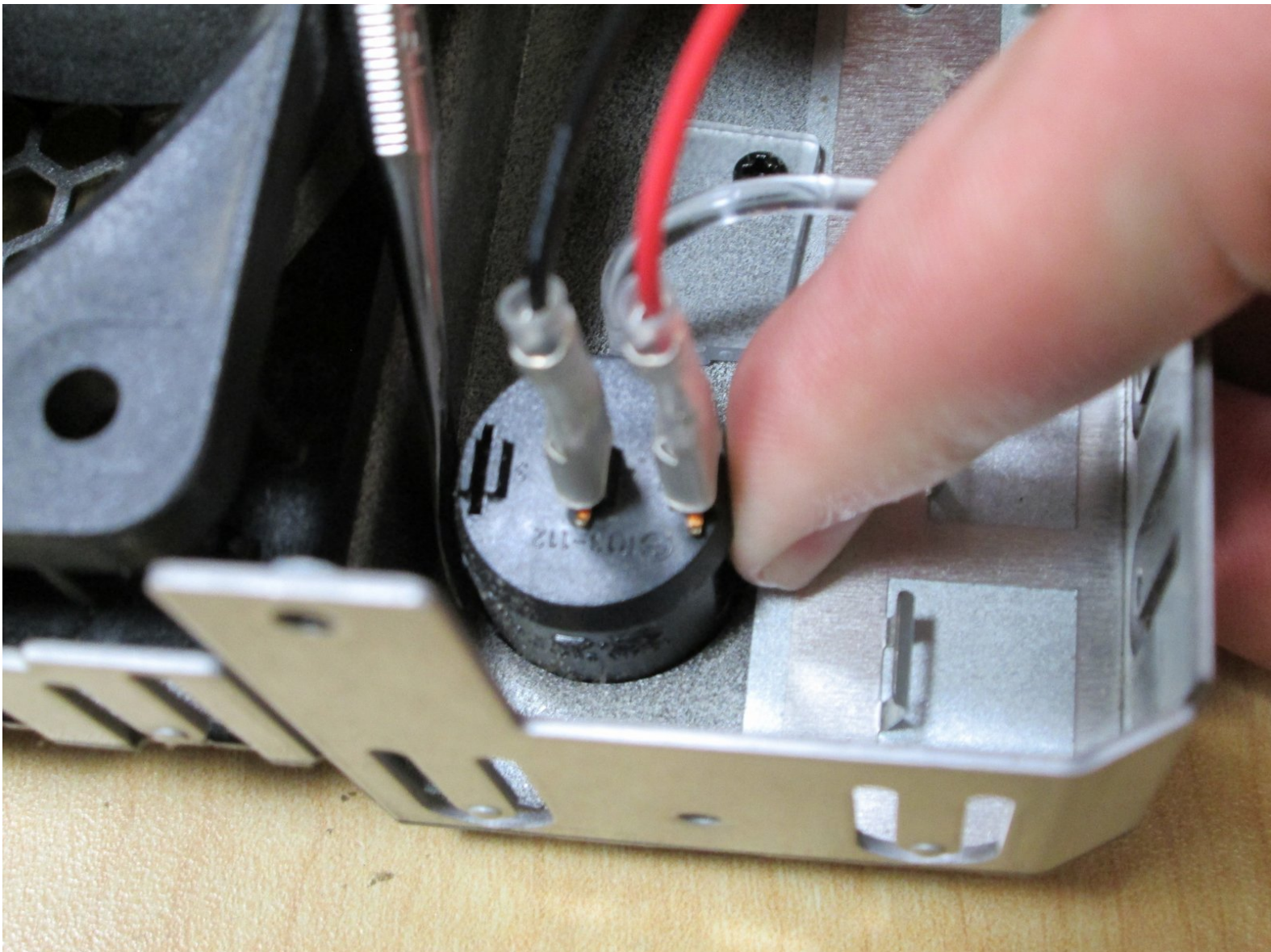




Drobo FS DRDS2-A Power Switch Replacement

Replacing the Power Switch on the Drobo FS DRDS2-A

Written By: Rye Cassan



INTRODUCTION

How to replace the Power Switch



TOOLS:

- [Phillips Screwdriver](#) (1)
- [Spudger](#) (1)



PARTS:

- [Replacement Power Switch](#) (1)

Step 1 — Case



- To start getting the case off remove the front panel so it's out of the way.

Step 2



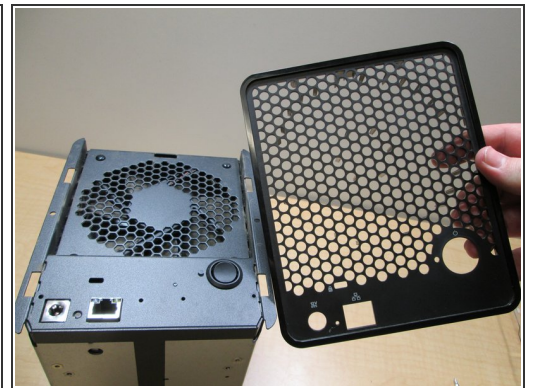
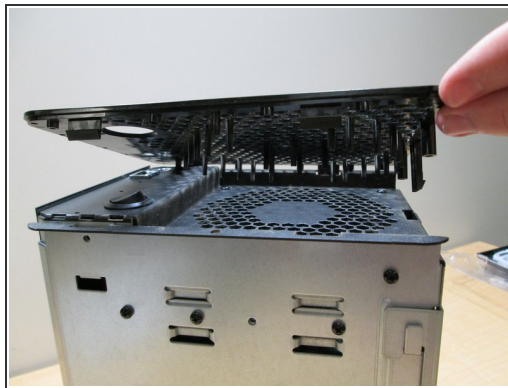
- Next remove the screws from the feet of the case with a phillips head screwdriver.

Step 3



- To remove the case, place the Drobo on its back and slide the case off.

Step 4 — Power Switch



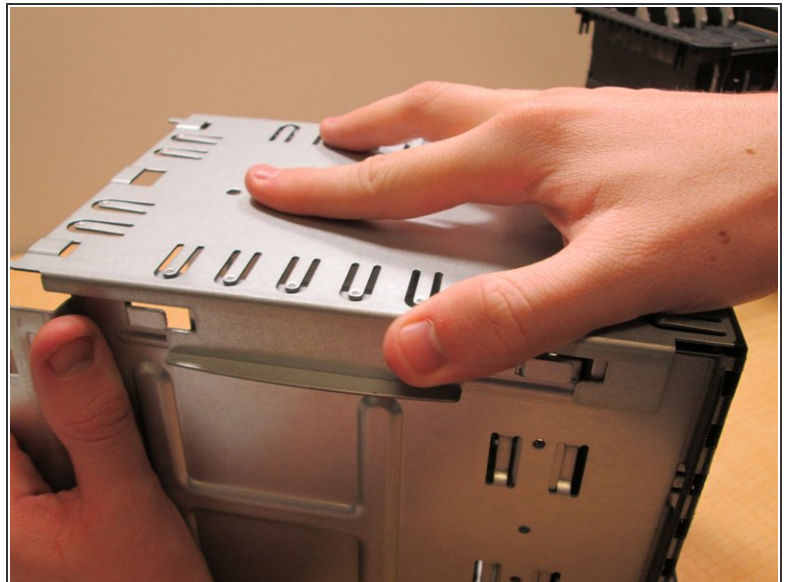
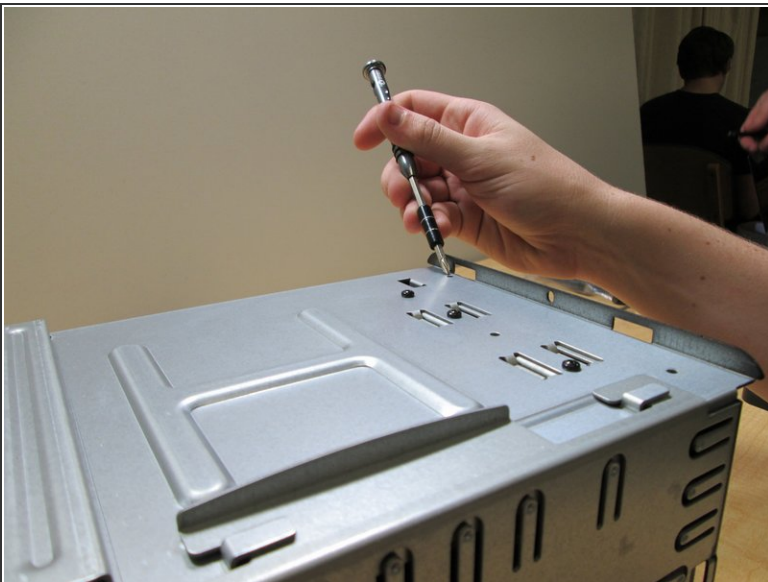
- Press tabs to release back cover and lift off

Step 5



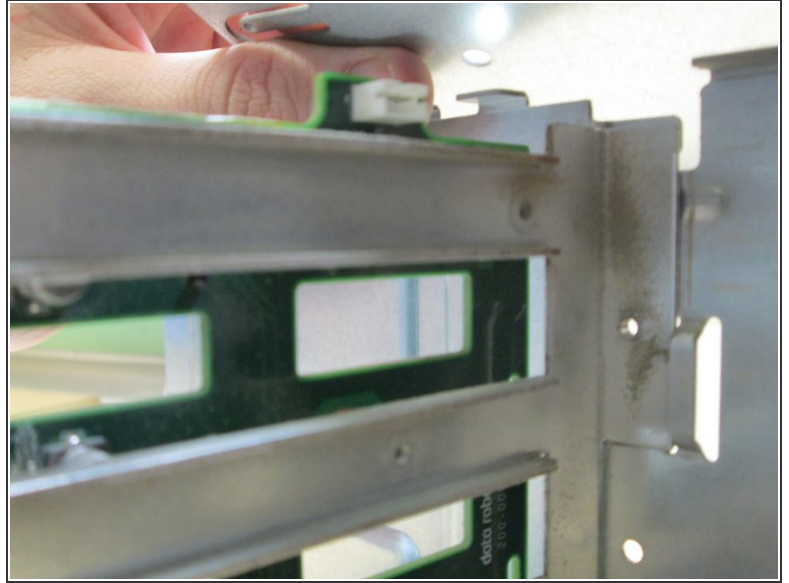
- Push tabs in and carefully pull out the front facer and drive shelves

Step 6



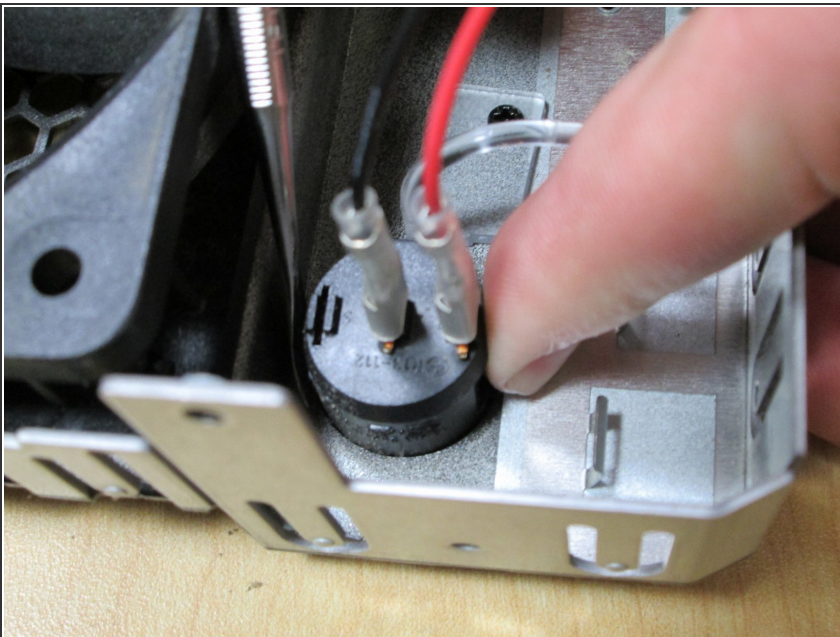
- Unscrew the back face by removing the screw on the back sides, then slide top face apart from the others

Step 7



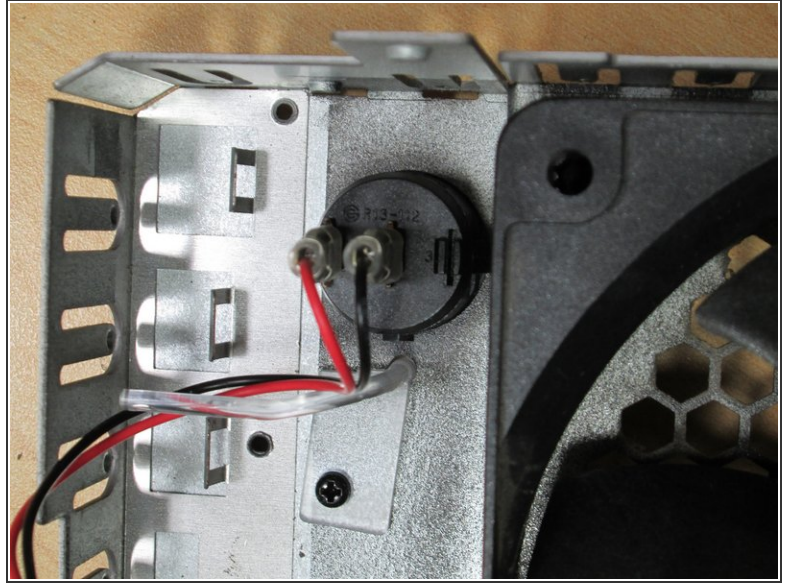
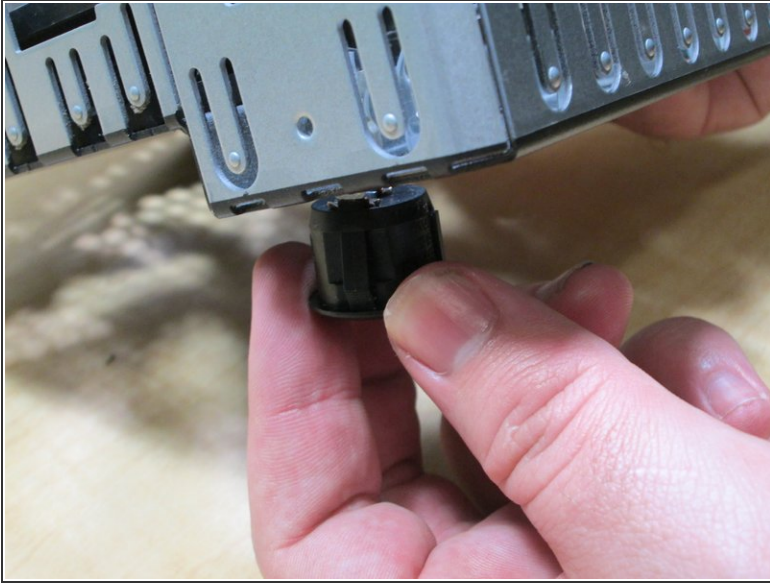
- Carefully unplug the Power Switch and Fan wires.

Step 8



- Press tabs on Power Switch to release the Power Switch and Push out.
- ① A Spudger like object is helpful for pushing in the tabs if the fan is not removed also

Step 9



- Finally pull the old switch out and pop the new one in.

To reassemble your device, follow these instructions in reverse order.