



DualShock 3 Battery Replacement

This is a guide for a DualShock 3 Controller battery replacement. These steps can be used to access the battery if needed to replace it.

Written By: Marcus Aiken





TOOLS:

- [Slip Joint Pliers](#) (1)
-

Step 1 — Step 1



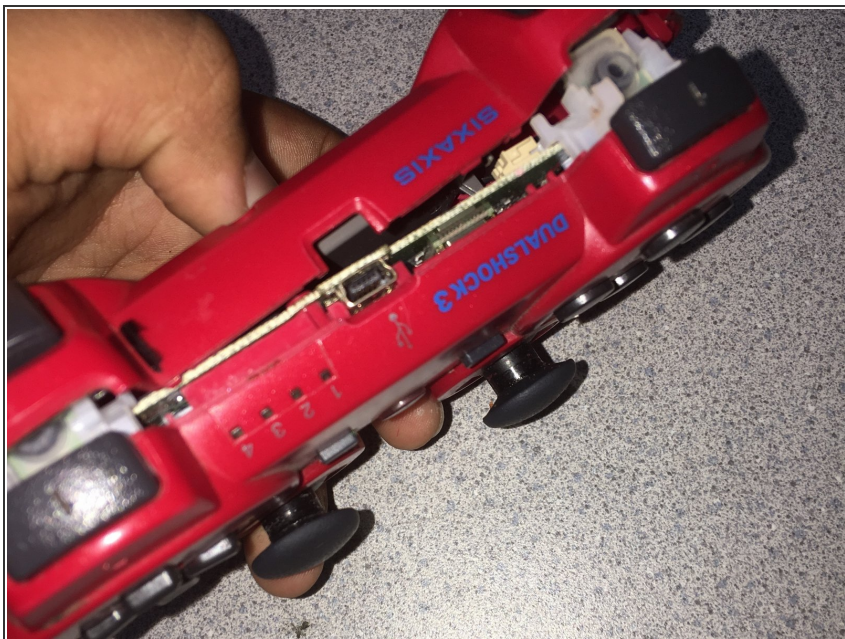
- This is the Dualshock 3 controller
- On the back of the controller, there will be five 7.2mm Phillips screws securing the body of the controller. (The five screws are circled in black.)
- Remove each of the five screws from the back of the DualShock controller.

Step 2 — Step 2



- Push the center of the rear cover (between the two analog sticks) and carefully lift the lower edge away from the rest of the controller.

Step 3 — Step 3



- Push the rear cover slightly toward the top edge of the controller to clear the front edge of the #2 triggers.
 - Pull the rear cover away from the rest of the controller, but be careful so that you won't pop off the #2 triggers.
- ⓘ Here is a [DualShock trigger guide](#) on the IFIXIT website in case you need to reattach the #2 triggers.

Step 4 — Step 4



- Move the battery off the motherboard so you have enough clearance to access the battery connector.

Step 5 — Step 5



- Carefully pull the battery connector away from the socket that is attached to the motherboard. (Battery connector is circled in black.)
- ⓘ It may be safer to use a tool like tweezers or pliers to pull the battery connector out of the socket.
- ✦ Now you can dispose of the old battery safely. For example taking old used batteries to a household hazardous waste facility.

To reassemble your device, follow these instructions in reverse order.