



DualShock 4 Charging Port Replacement

Remove the charging port in the Dualshock 4 controller.

Written By: Bijan Vakilifathi



INTRODUCTION

This guide provides a step-by-step process of how to replace a charging port in the DualShock 4 controller.



TOOLS:

- [Phillips #00 Screwdriver](#) (1)
- [iFixit Opening Tools](#) (1)
- [Essential Electronics Toolkit](#) (1)



PARTS:

- [DualShock 4 Controller Charging Assembly 2nd Gen \(JDS-011\)](#) (1)
- [DualShock 4 Controller Charging Assembly 1st Gen \(JDS-001\)](#) (1)

Step 1 — Controller



- Using the Phillips #00 Screwdriver, remove the four 6.0 mm screws securing the rear cover to the controller.

⚠ Do not forcefully loosen the screws, as it will amount to permanent damage of the threads, making removal impossible.

Step 2



- Beginning with the **left handle**:
 - Pinch the left handle of the controller to introduce an opening.
 - Wedge a plastic opening tool into the opening and slide it up towards the joystick.
 - Pull down on the plier to crack open the casing.
- Repeat these steps for the **right handle**.

Step 3



- Wedge a plastic opening tool into the case-splittings and pull down to crack open the casing near the following buttons:
 - **Share** button
 - **Options** button
- Split the plastic covers of the controller apart, taking note that they will still be attached by circuit board ribbons.
- ⓘ Three small pieces are often released from the framework. To prevent loss, maintain a controlled work field.
 - 2 Trigger Springs
 - 1 Grey Reset Button Extension

Step 4 — Charging Port



- Detach the motherboard ribbon connecting the two sides of the controller by using your fingers.
- After the two halves are separated, place the top of the controller off to the side.

Step 5



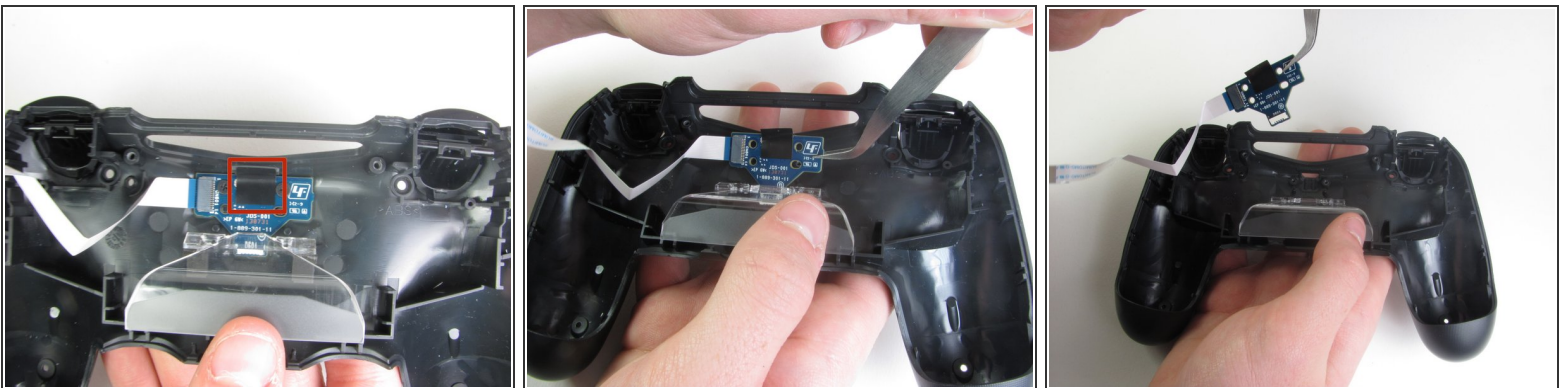
- Remove the two screws holding the sub-assembly together. Then use the blunt forceps to grab the 2 inch black plastic connector labeled in the picture with the red box.
- Use the blunt forceps to grab the 2 inch white piece of plastic labeled with the orange box.

Step 6



- With the clear piece of plastic pushed in, take the transparent white piece out from the top of the controller.
- ⓘ Keep the clear plastic piece on the controller, but keep it pushed down to provide room for charger port replacement.
- Use the Philips #00 Screwdriver to unscrew the two 4.0 mm screws that attach the charging port to the rear cover.

Step 7



- With the blunt forceps remove the top part of the black tape connecting the charging port to the plastic portion of the controller.
- Grab the PCB of the charging port from the side and pull upwards slowly to remove from the controller.
- ⚠ Do NOT pull the blue PCB rapidly upwards; instead move the piece side to side to create some free space between the controller and PCB.

To reassemble your device, follow these instructions in reverse order.