



# DualShock 4 L2/R2 Rubber Components Replacement/Adjustment

How to fix L2/R2 rubber components on a PS4 CUH-ZCT1 Dualshock 4 controller.

Written By: Timothy D Finnie



## INTRODUCTION

Step-by-step on how to either replace or readjust the L2/R2's rubber components on a dualshock PS4 controller (Model CUH-ZCT1).



### TOOLS:

- [Phillips #00 Screwdriver](#) (1)
- [Spudger](#) (1)



### PARTS:

- [PS4 conductive rubber components](#) (1)

## Step 1 — L2/R2 Rubber Components



- Click the restart button on the back in a tiny hole to ensure controller is off.
- ⓘ You can use anything that is thin enough to push the button without damaging the controller.

## Step 2



- Unscrew the Outer Shell apart from each other. There are two sides.
- Use the screwdriver to unscrew the four screws on the back.



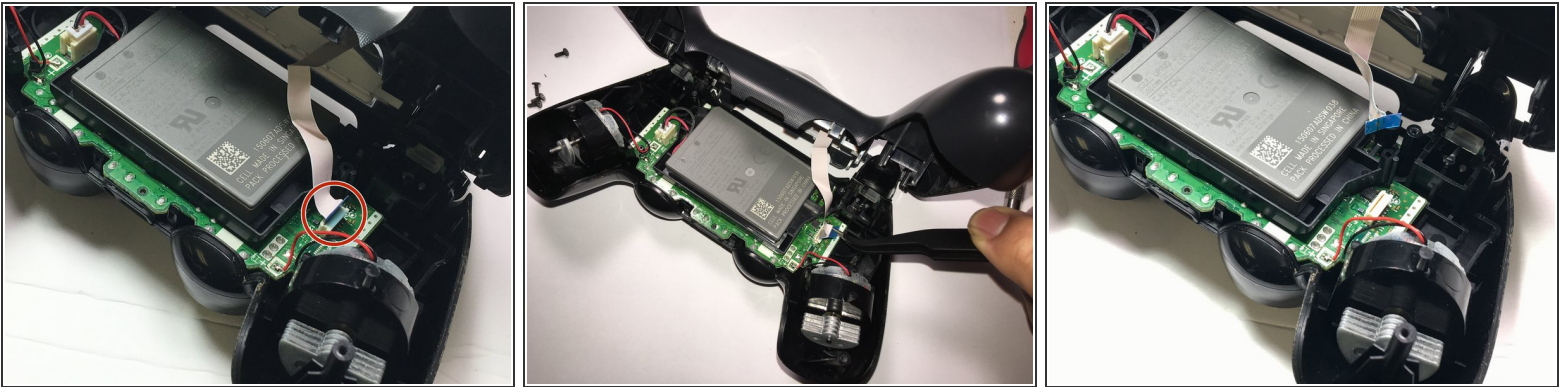
### Step 3



- Proceed to pry open the shell by squeezing the top end of the shell's handles then pull towards the back buttons.

⚠ Be careful prying open the shell. There is a strip that attaches the top half to the bottom.


### Step 4



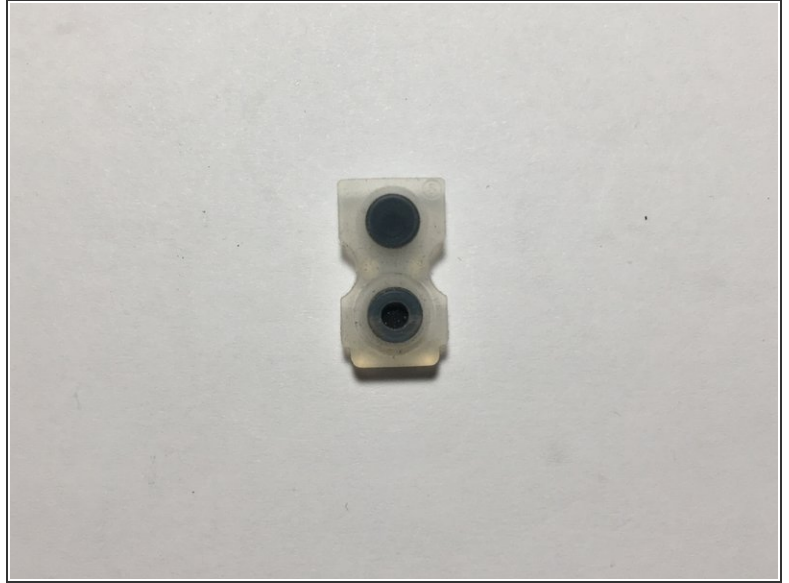
- Detach strip on bottom shell from the upper shell. There should be a blue-tab attachment where you are able to pry the strip from its connector for an easy disassemble.

## Step 5



- Disconnect the connector that is connecting the battery to the motherboard. Remove the battery.
  - Next pull away the L2/R2 buttons from their positions. L2/R2 should be removed by carefully pulling vertically. Note There are two stubs on the side of it use a prying tool and gently pop them out.
-  Two springs will come out with the triggers.

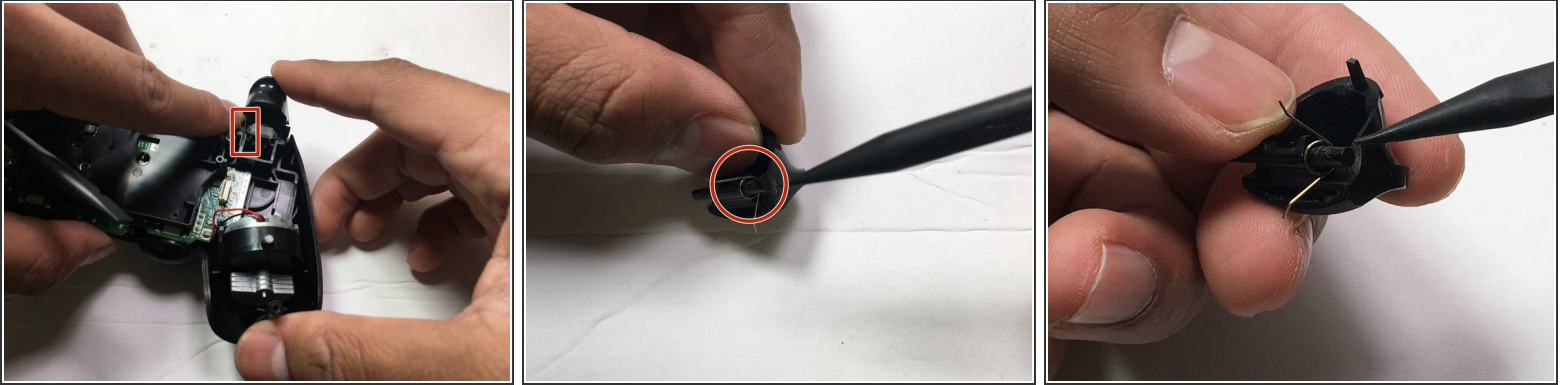
## Step 6



- Examine the controllers rubber guards to see if it needs to be replaced or simply needs to be readjusted. If it is damaged, replace the rubber guard with a new one for the correct model, then, proceed to the next step. If not, proceed to the next step.
- Carefully slide the rubber guard with the area that sticks out more going down into the slot (The crater part of the rubber guard should be in place for the R2/L2 slots; see picture for directions). Once in place, ensure it is snugged and secure.

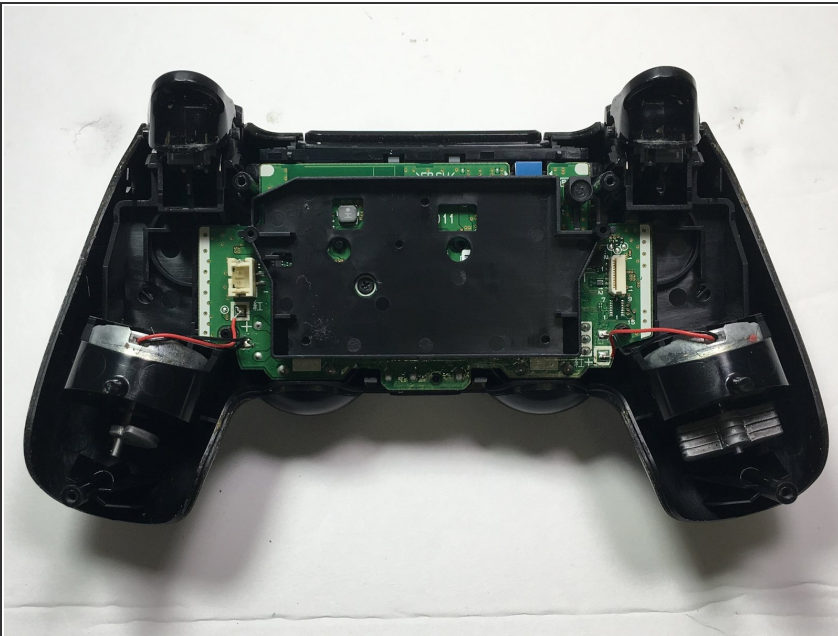


## Step 7



- Place the R2 and L2 trigger following R2 for the right side and L2 for the left side.
- ☑ There is a spring that makes the trigger reset to its original place when pressed. Ensure it is placed properly during reassembly.

## Step 8



- The buttons should reset to normal position as it is being depressed.
- Reconnect the battery.
- Connect the strip back into the connector then close the shell starting from the triggers to the handles.
- Screw all screws back into place.

To reassemble your device, follow these instructions in reverse order.