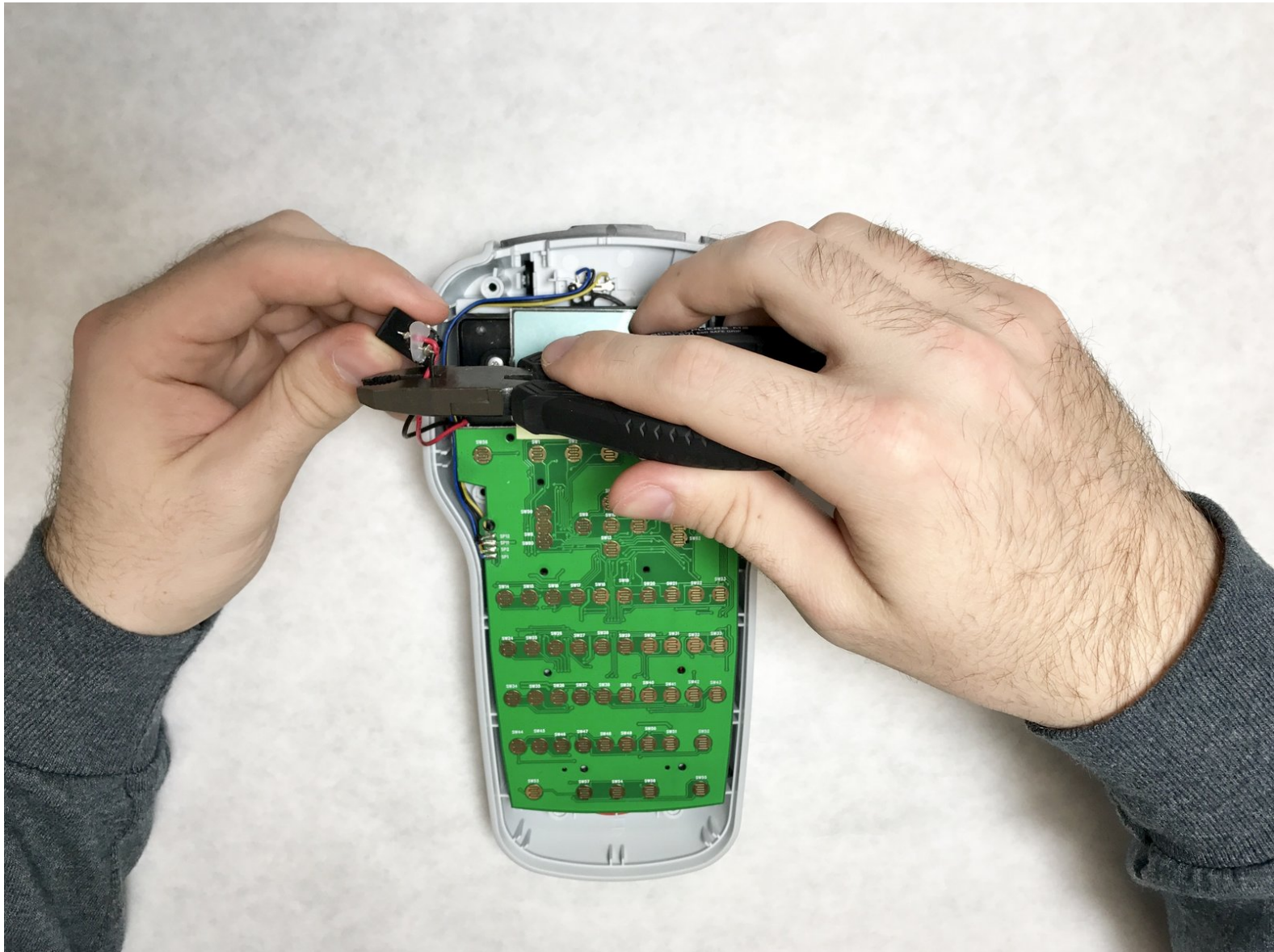




Dymo LabelManager 160 Charging Port Replacement

This guide provides step-by-step instructions on how to replace or adjust the charging port.

Written By: Andrew Ozga



INTRODUCTION

If your charging port has become unresponsive or loose, it may be time for replacement or adjustment. This guide provides step-by-step instructions on how to access and replace the charging port.



TOOLS:

- [Soldering Iron](#) (1)
 - [Phillips #0 Screwdriver](#) (1)
-

Step 1 — Batteries



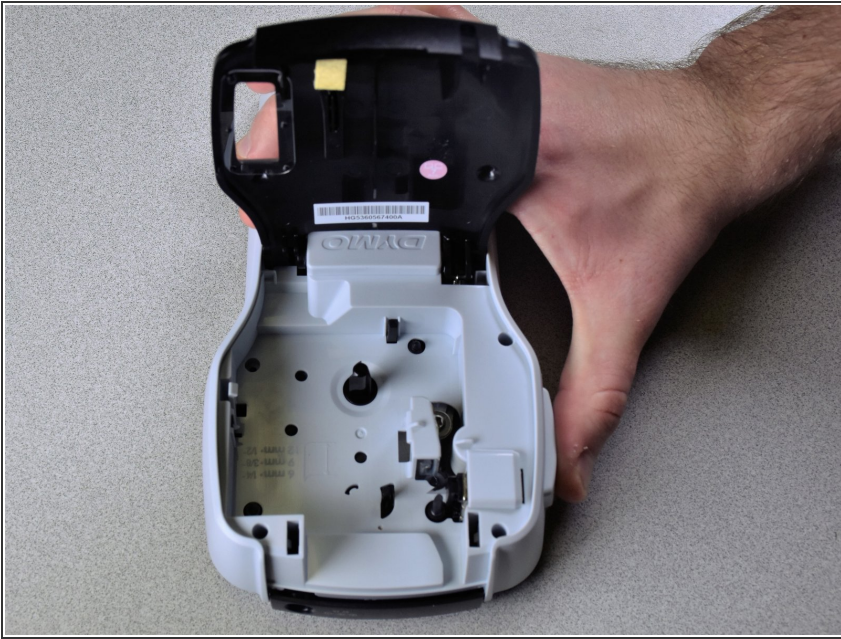
- Place the device face-down to access the battery compartment.

Step 2



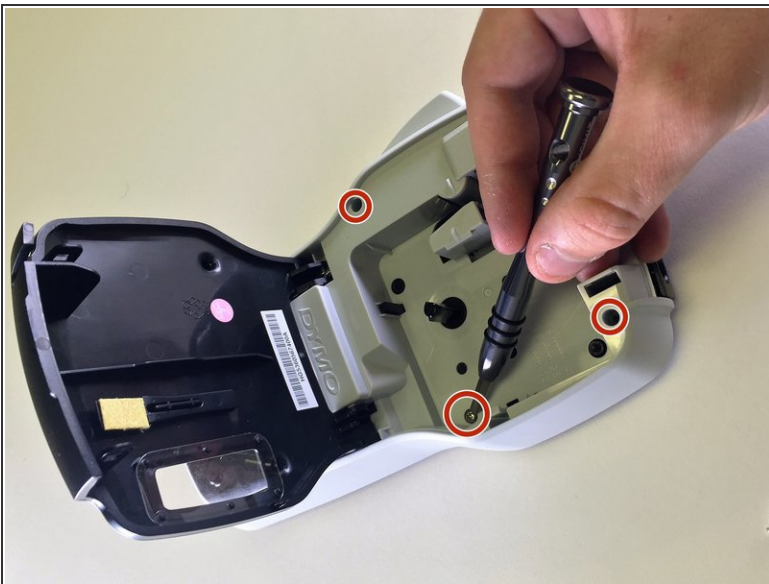
- Remove the compartment cover to reveal the batteries. Remove the 6 old batteries.

Step 3 — Keyboard



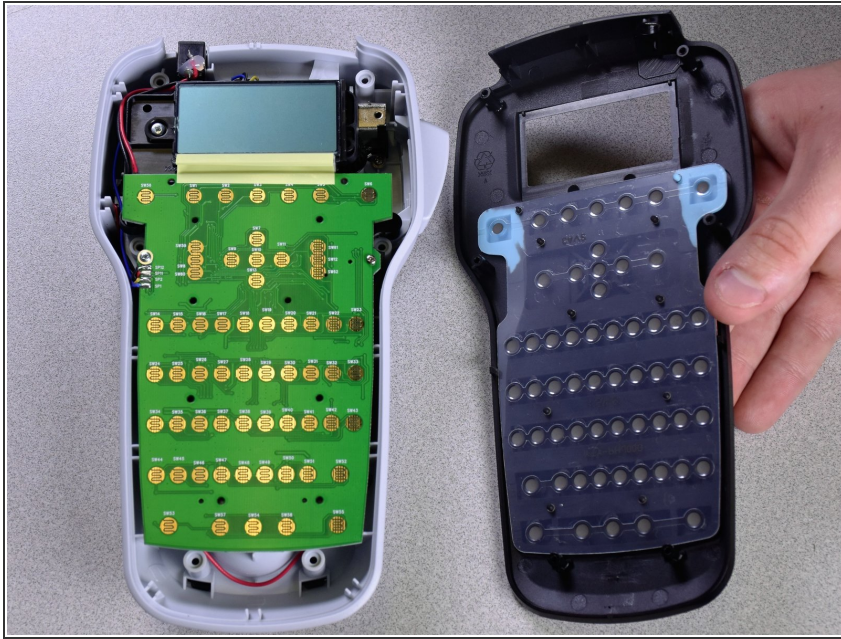
- To open the cartridge compartment, simply lift on the front of the device.

Step 4



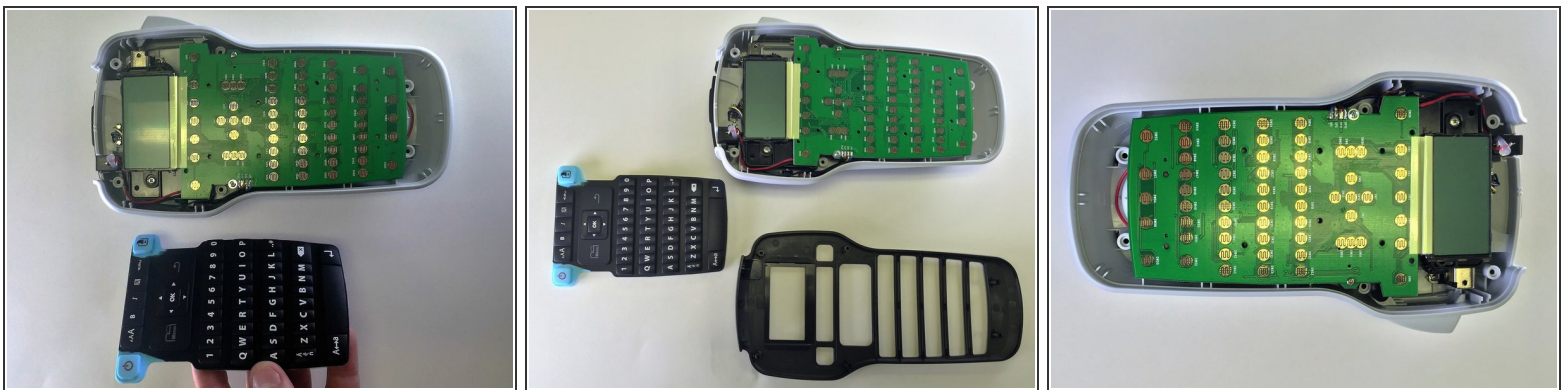
- Using a Phillips #0 screwdriver, remove the four 1.3mm screws from the cartridge compartment and two 1.2mm screws from the battery compartment.

Step 5



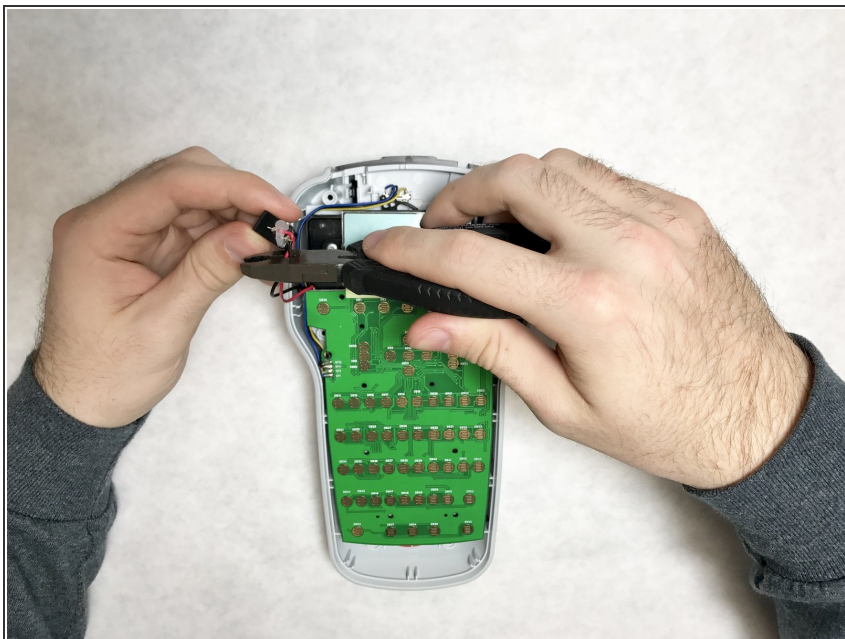
- Using a spudger or other tool, lift and remove the front of the device. This should be done all around the device to ensure the two parts split correctly.

Step 6



- Gently remove the rubber keyboard from the device.

Step 7 — Charging Port



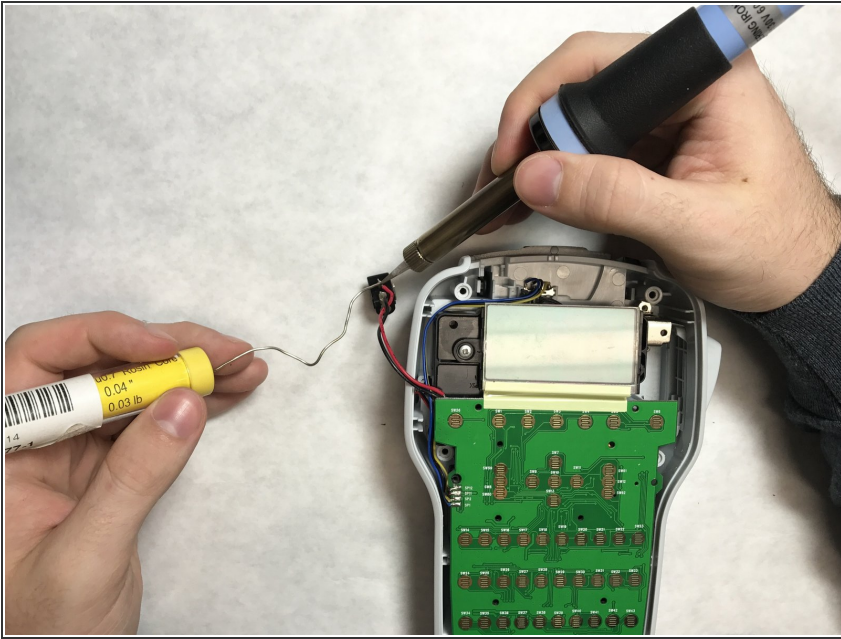
- Use wire cutters or scissors to cut the wires attached to the charging port, and remove the charging port.

Step 8



- Use wire strippers to strip the end of each wire.

Step 9



- Solder the black wire to the bottom-most node of the new charging port. Solder the red wire to the uppermost node of the new charging port. See the following link for soldering tips: [How To Solder and Desolder Connections](#)

To reassemble your device, follow these instructions in reverse order.