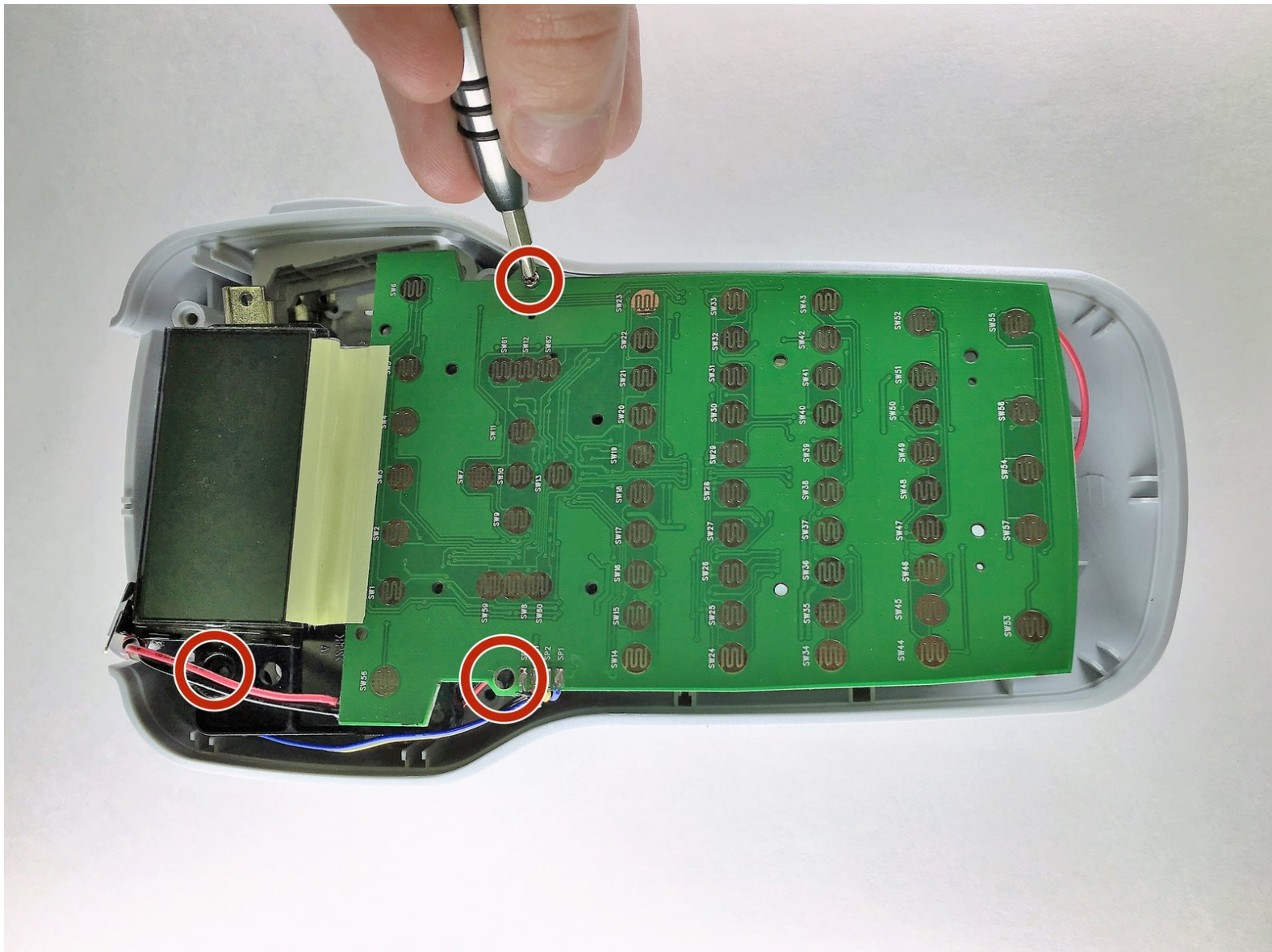




# Dymo LabelManager 160 Wheelhead Replacement

This guide will walk you through the steps of replacing the wheelhead on your Dymo LabelManager 160.

Written By: Matthew Jenkins



---

## INTRODUCTION

If your Dymo LabelManager 160 is not properly printing from Dymo D1 Label Cassettes, the wheelhead which unspools the cassettes may be not functioning. This guide leads you through the process of opening up the LabelManager and changing the wheelhead. Keep in mind that the device has loose parts.



### TOOLS:

- [Phillips #0 Screwdriver](#) (1)
  - [Spudger](#) (1)
-

## Step 1 — Batteries



- Place the device face-down to access the battery compartment.

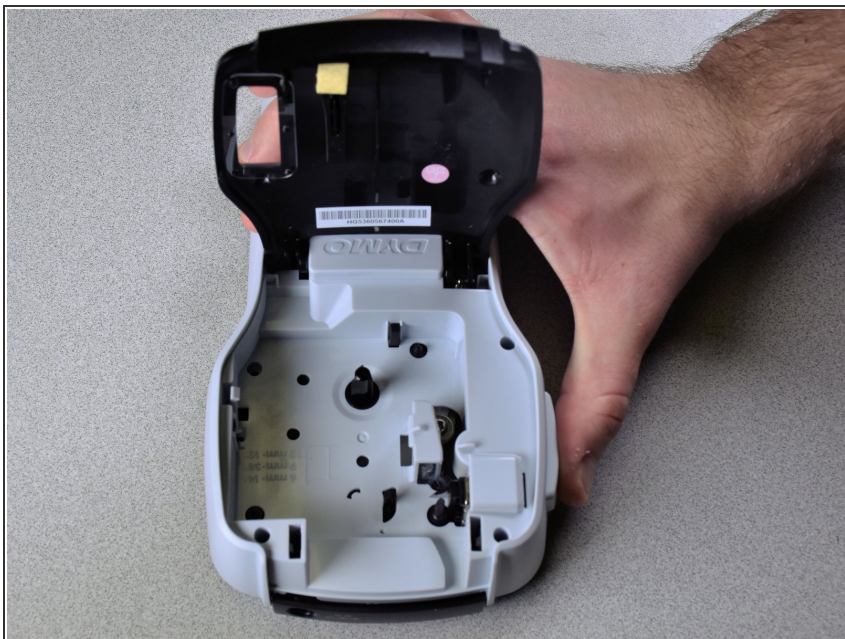
## Step 2



- Remove the compartment cover to reveal the batteries. Remove the 6 old batteries.

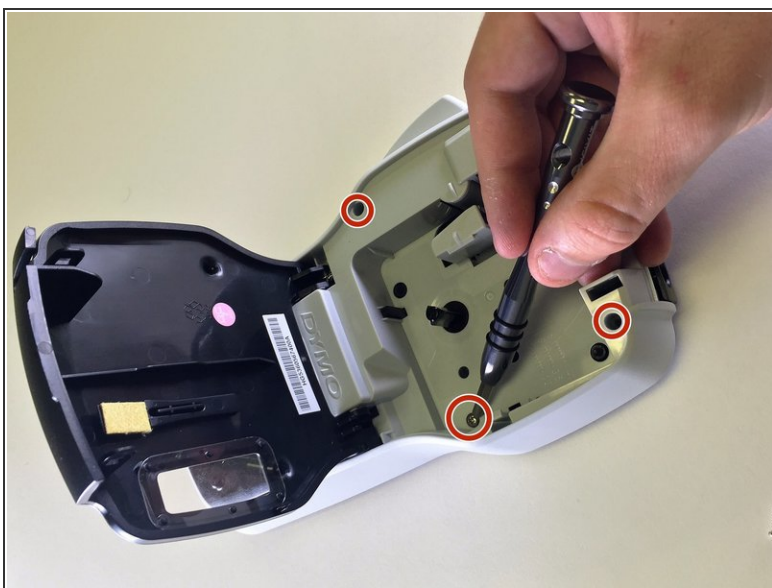


## Step 3 — Keyboard



- To open the cartridge compartment, simply lift on the front of the device.

## Step 4



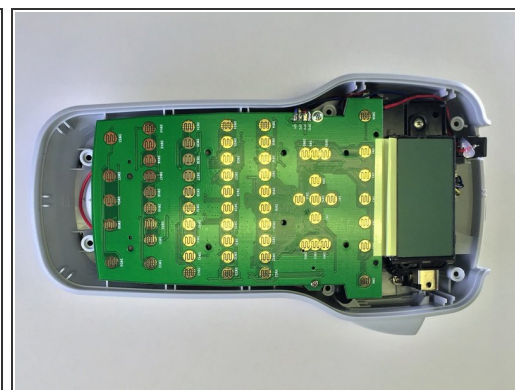
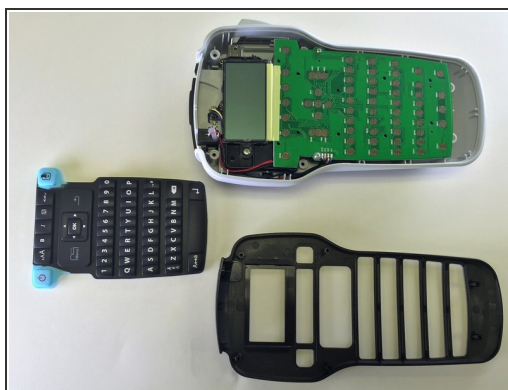
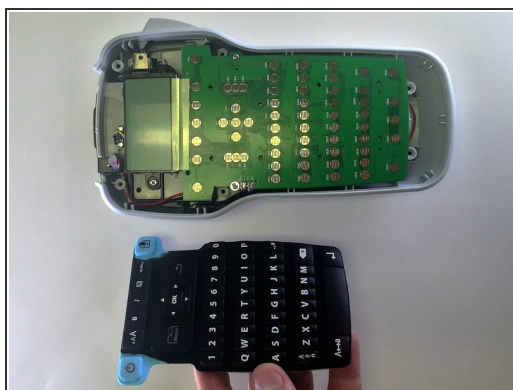
- Using a Phillips #0 screwdriver, remove the four 1.3mm screws from the cartridge compartment and two 1.2mm screws from the battery compartment.

## Step 5



- Using a spudger or other tool, lift and remove the front of the device. This should be done all around the device to ensure the two parts split correctly.

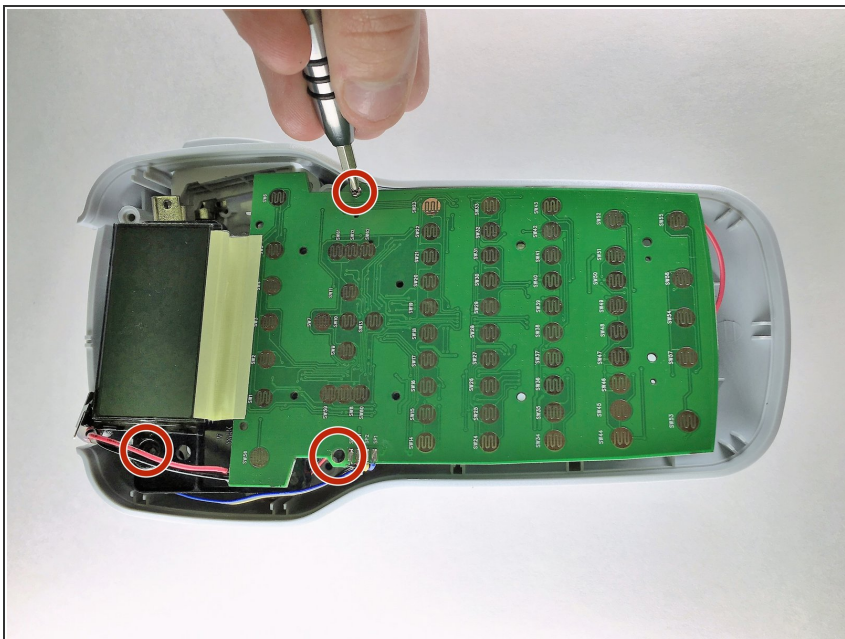
## Step 6



- Gently remove the rubber keyboard from the device.

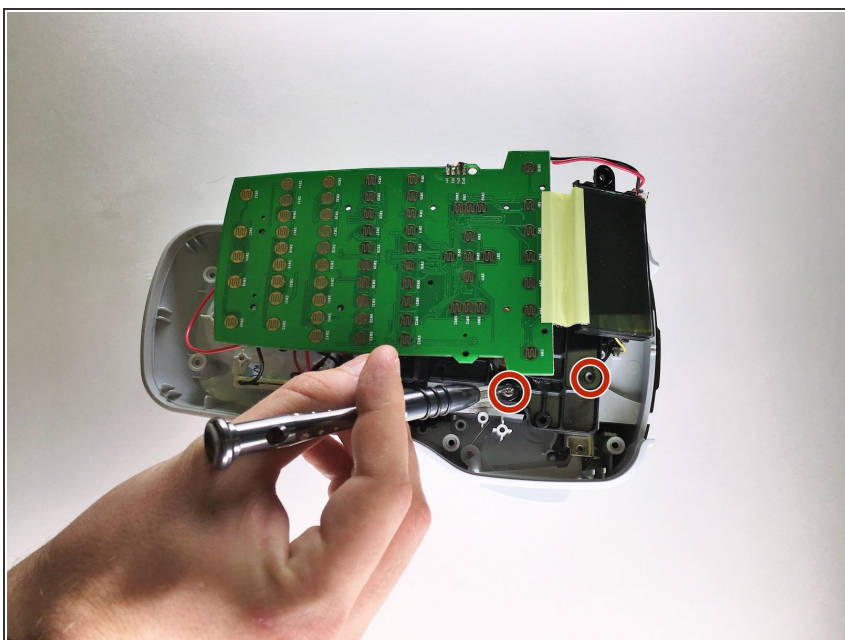


## Step 7 — Wheelhead



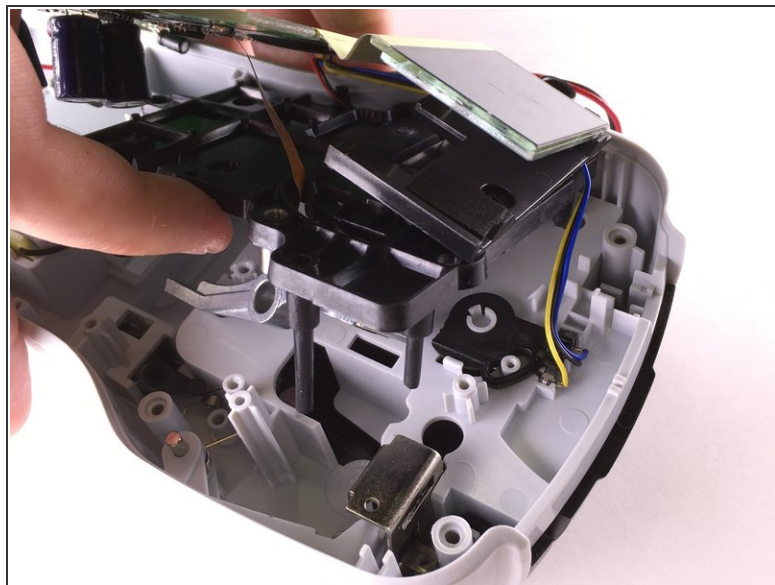
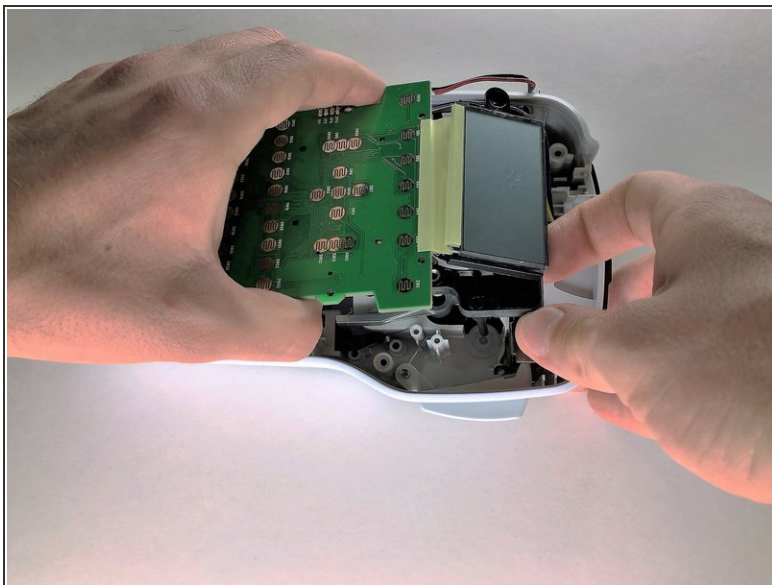
- Using a Phillips #0 screwdriver, remove the three 1.1 mm screws from the circuit board.

## Step 8



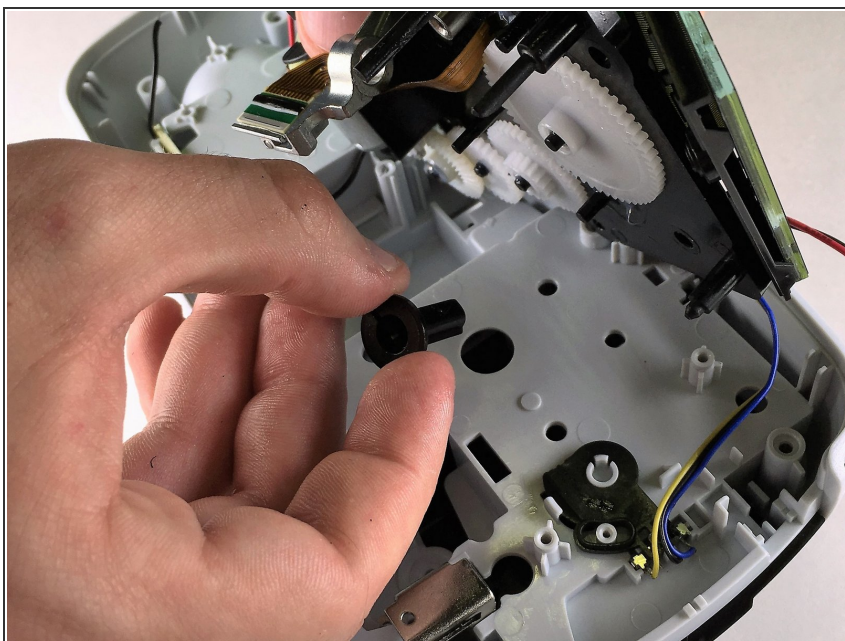
- Lifting the circuit board, use a Phillips #1 screwdriver to remove the two 1.2mm screws from under the circuit board.

## Step 9



- Proceed to lift the excess device components until the rollerblade is visible.

## Step 10



- With the device components exposed, gently lift the wheelhead out of the label maker.

To reassemble your device, follow these instructions in reverse order.