



# Dymo LabelManager 280 Keyboard Replacement

Replace the keyboard if you want it to work like new.

Written By: Steven Nguyen



# INTRODUCTION

This guide leads you through the process of opening up the LabelManager and changing the keyboard. Keep in mind that the device has loose parts. Be careful and keep track of all parts.



## TOOLS:

- [Phillips #0 Screwdriver](#) (1)
- [Spudger](#) (1)



## PARTS:

- [replacement rubber keyboard](#) (1)

## Step 1 — Rear Case



- Remove battery.
- Remove the label cassette.

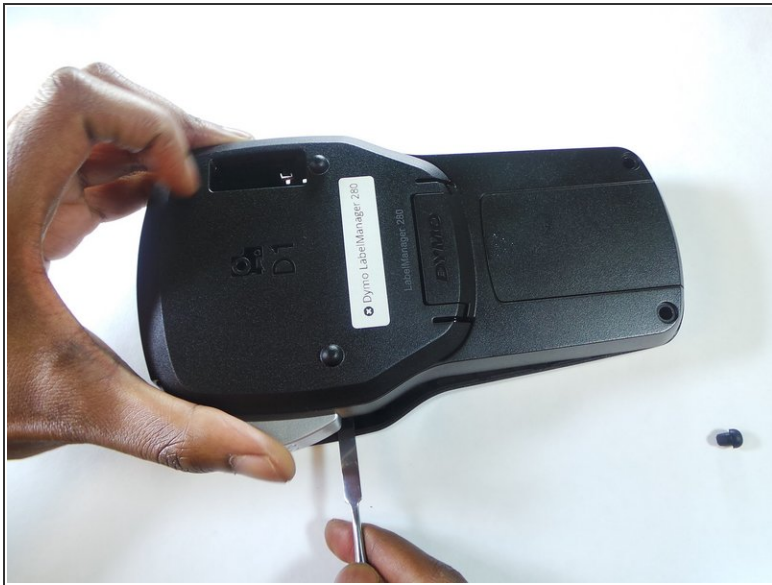
## Step 2



- Remove the 6 screws in the indicated places. These particular screws are 2mm x 8mm Phillips #0 head



### Step 3



- Use the spudger to take apart the device by inserting it as shown in the picture and twisting it. This should be done all around the device to ensure the two parts split correctly.

⚠ The keys/buttons highlighted in the second picture fall out easily so be careful. Keep device faced down in order to keep them from falling.

### Step 4 — Keyboard



- Remove the rubber keyboard.

To reassemble your device, follow these instructions in reverse order.