



Dyson Cinetic Big Ball Animal Upright Brushbar Replacement

This guide demonstrates how to replace the brushbar of the Dyson.

Written By: Karla Sunjara



INTRODUCTION

The Dyson brushbar is located on the underside of the base of the vacuum.



TOOLS:

- [Phillips #0 Screwdriver](#) (1)
-

Step 1 — Brushbar



- Lay the vacuum on its back so you can see the Dyson from underneath.

Step 2



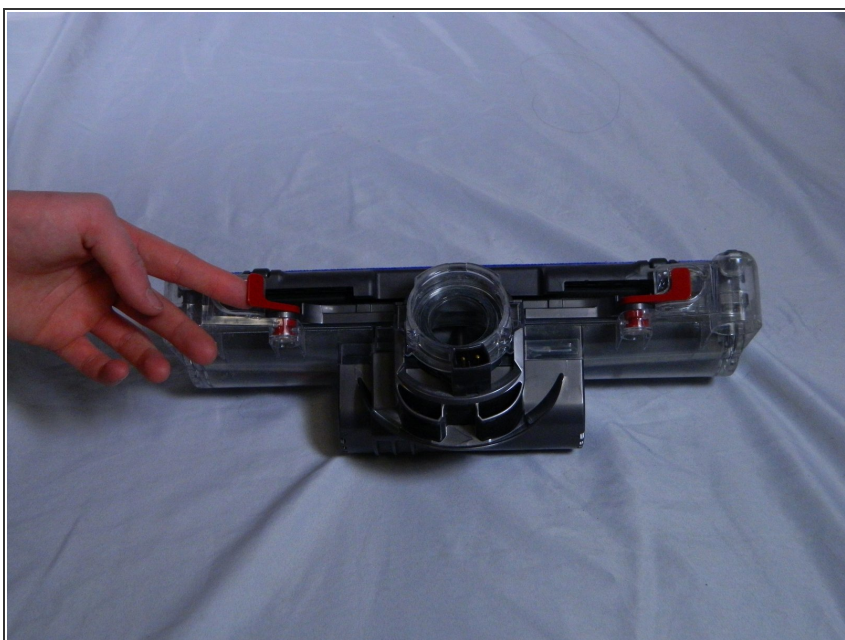
- Underneath the Dyson locate the red plastic tab.
- Pull out the red tab

Step 3



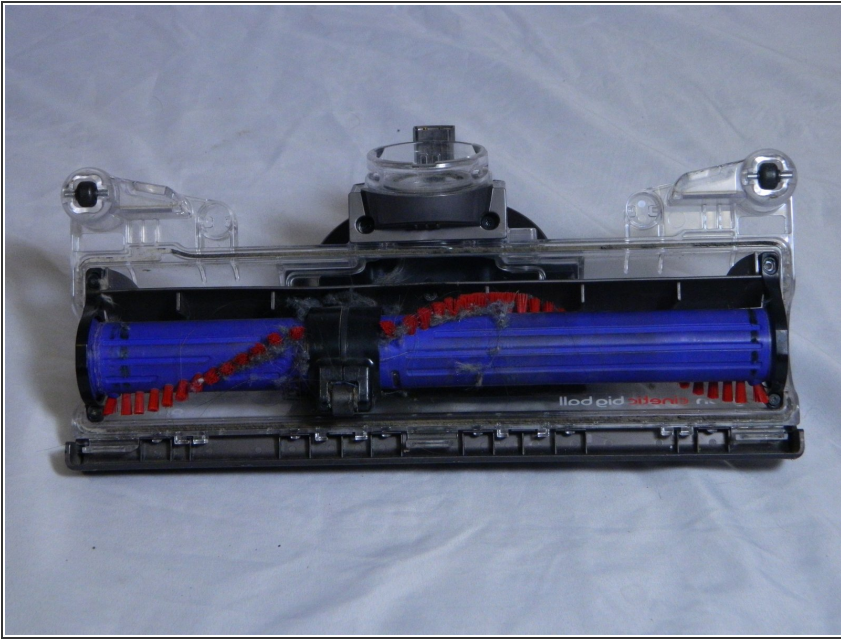
- Detach the brush bar and frame from the Dyson Ball.

Step 4



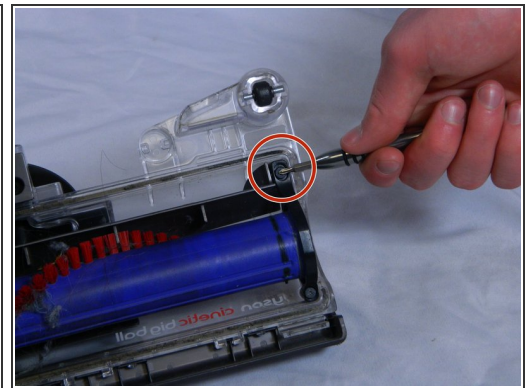
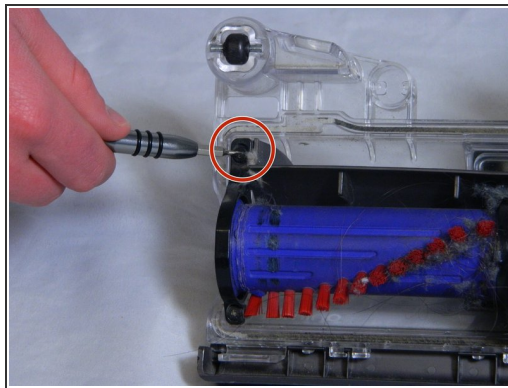
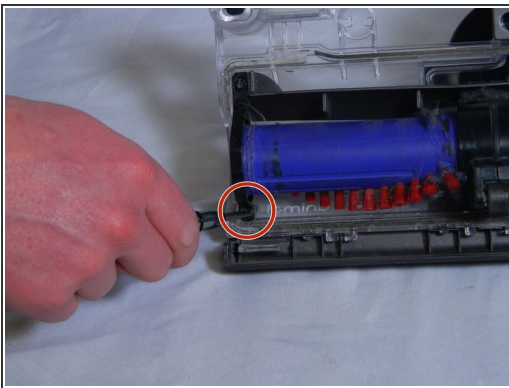
- Lay the brushbar flat as if it was vacuuming.
- Locate the two red tabs on either side of the brushbar frame.
- Lift up the red tabs and the brushbar frame will come off.

Step 5



- Place the Dyson brushbar on its back.
- Locate the four 15mm screws in each corner of the black plastic.

Step 6



- Unscrew the 15mm screws in all four corners of the brushbar.
- Remove the brushbar and replace it with a new brushbar.

To reassemble your device, follow these instructions in reverse order.