



EMSON Star Wars R2-D2 Ultrasonic Cool Mist Humidifier (One Gallon) Teardown

An instructional disassembly of the EMSON Star Wars R2-D2 Ultrasonic Cool Mist Humidifier (One Gallon).

Written By: Paul



INTRODUCTION

The R2-D2 humidifier is a fairly simple device to take apart. We will start with the preparation for the tear-down.

TOOLS:

- [Mako Driver Kit - 64 Precision Bits](#) (1)
 - [Tweezers](#) (1)
-

Step 1 — EMSON Star Wars R2-D2 Ultrasonic Cool Mist Humidifier (One Gallon) Teardown



- Gently lift the cover off the humidifier

Step 2



- Grip the dial and pull away from the device.

Step 3



- Gently pull the water tank off the base

Step 4



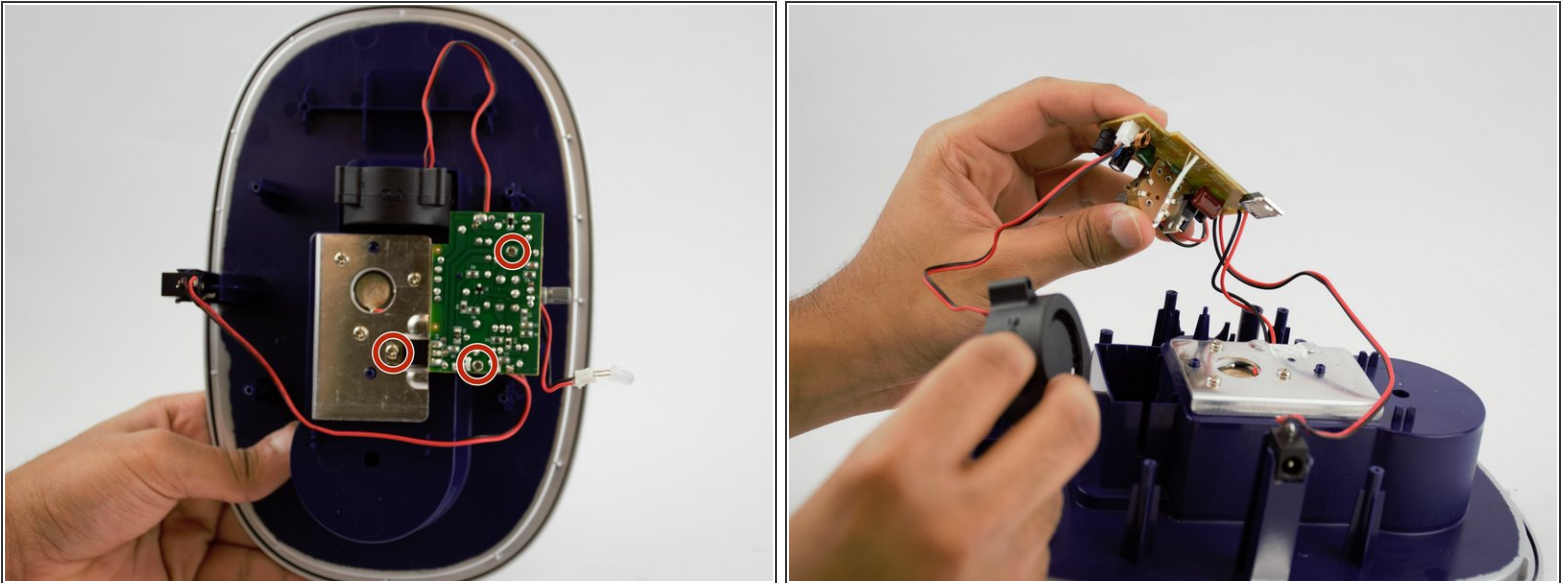
- Locate the valve at the bottom of the tank.
- Twist the valve counterclockwise to remove it.

Step 5



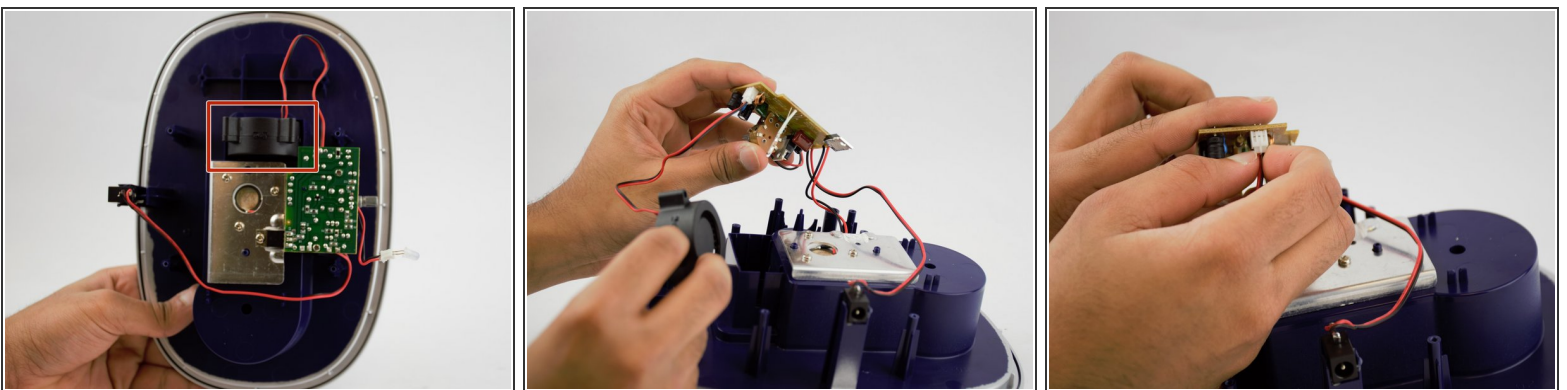
- Flip the base upside-down
- Connect the 4 mm nut driver to the 4 mm aluminum driver. Then, connect the PH1 head to the 4 mm nut driver.
- Insert the driver into each of the 4 holes and twist counter clockwise to remove the screws.
- Flip the base upright and pull off the top.

Step 6



- Connect a PH1 head to the 4 mm aluminum driver
- Unscrew the circled screws of both the circuit board and heating plate(metal plate)
- Gently remove the circuit board

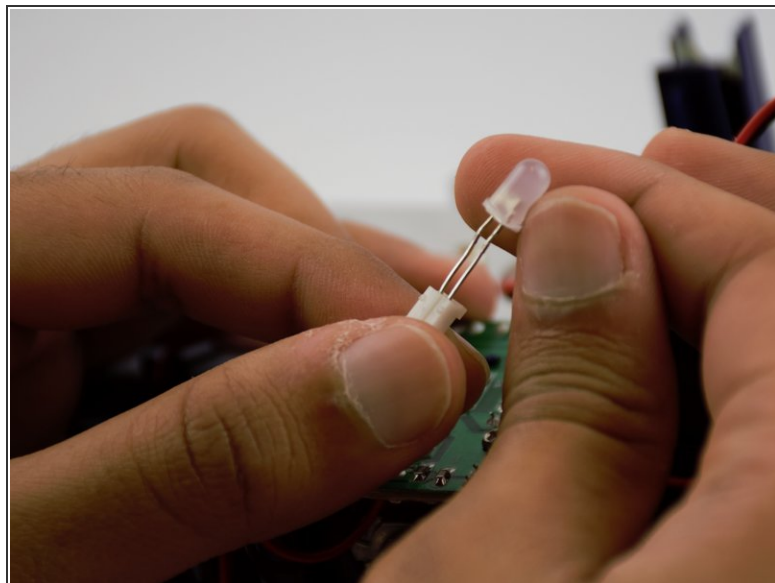
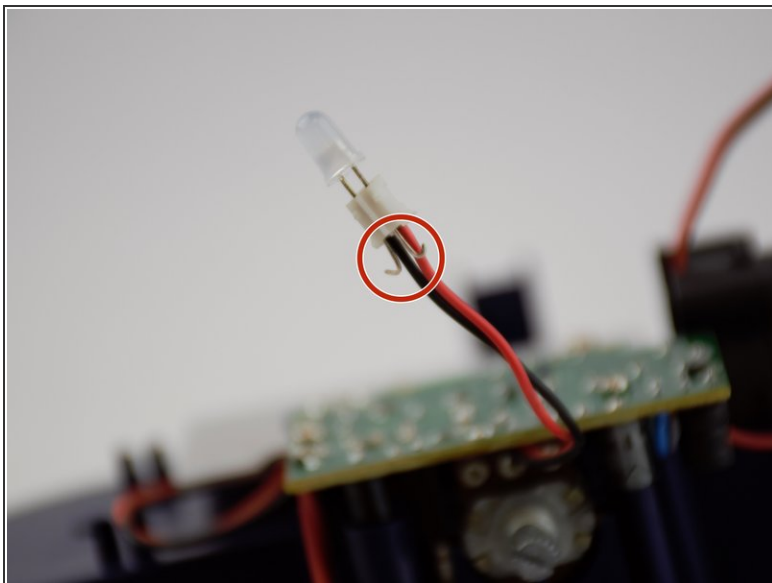
Step 7



- Gently pull out the fan (located in the red rectangle)
- We recommend removing the circuit board before attempting to completely remove the fan.
- Unplug the pin, connected to the circuit board, to remove the fan.

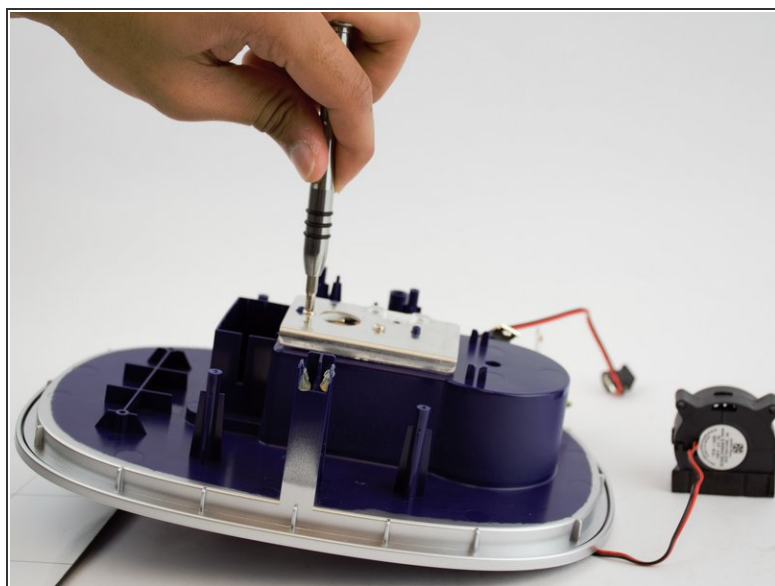
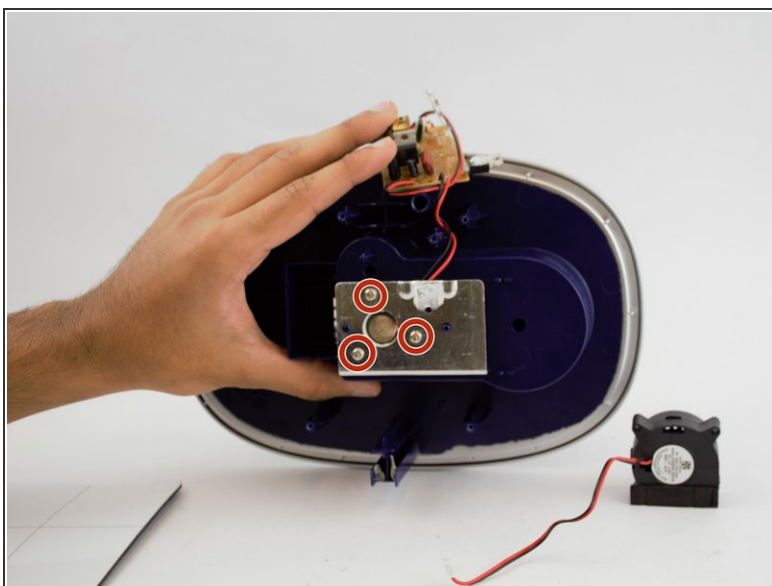
(i) Note: Remove the pin cautiously, the edges may hurt your fingers.

Step 8



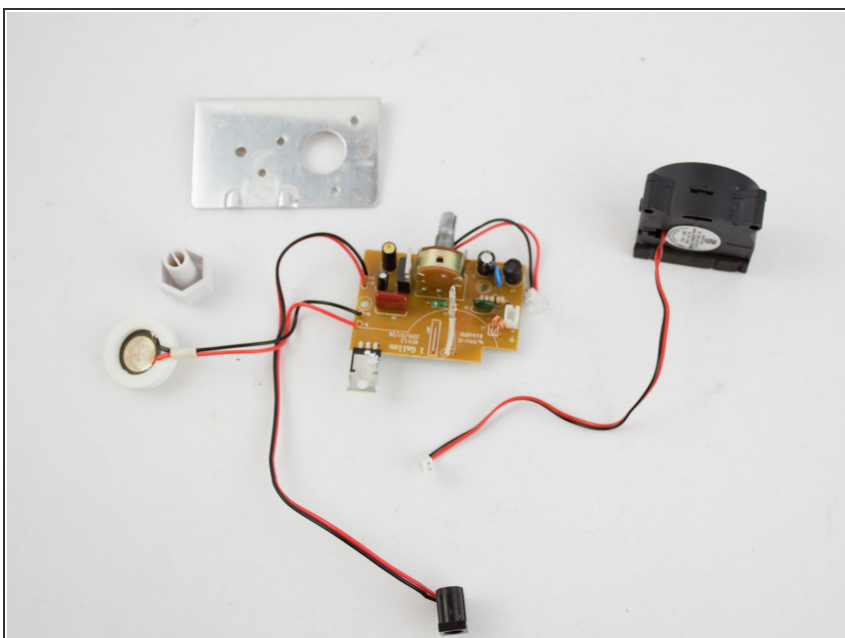
- The LED is connected to a pin that is connected to the circuit board.
- Upon close inspection, you can see that the LED's two ends are bent (red circle of the second image) to prevent it from slipping off of the pin.
- Use blunt tweezers to bend and straighten the two ends.
- Once the two ends are straight, gently pull the LED out of the pin.

Step 9



- Remove the screws (located in the red circles) off of the heating plate with a 4 mm aluminum driver with a PH1 head.
- Once the screws are removed, gently pull off the metal plate.

Step 10



- All the inner components of the humidifier.

