



# Ear bud Teardown

This guide will help our viewers understand the fundamentals of the ear bud inside and out, and how this device works.

Written By: Nicki and AJ



---

## INTRODUCTION

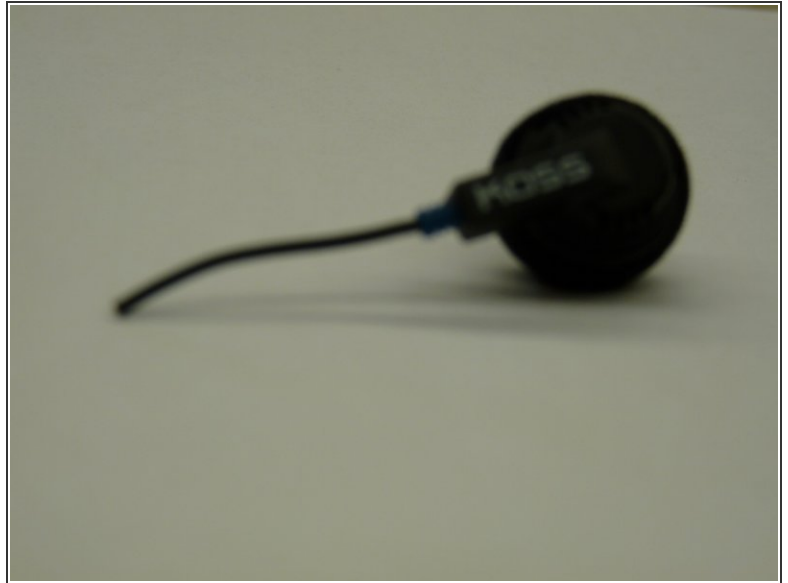
This information will give you the understanding of how and what makes an ear bud work.



### TOOLS:

- [Metal Spudger Set](#) (1)
-

## Step 1 — Ear bud Teardown



- As you can see this is your average ear bud, from these two pictures you can see the front and the back.

## Step 2



- Take the silver covering off of the ear bud, notice the black wire connecting the two (the wire should be knotted)

### Step 3



- Now detach the black shell completely.

### Step 4



- Remove the black wire from the ear bud. Take the copper colored wire out of the black covering

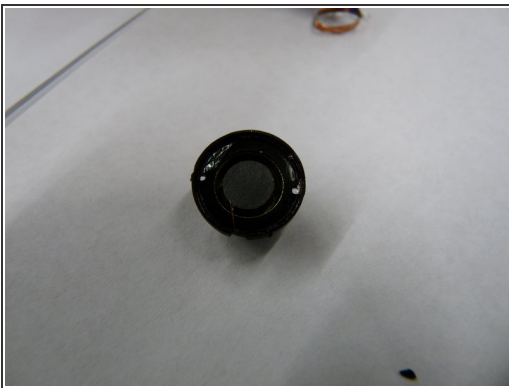


## Step 5



- This is what is inside the ear bud. You will see a silver ring surrounding the wires, and protecting cellophane around it.

## Step 6



- On the ear bud you will see a magnet on the inside of the black encasing, Remove the Magnet from the encasing.

## Step 7



- This is the copper band that was surrounding the magnet.

## Step 8



- This is the black ring that was around the magnet.



## Step 9



- Take the ear bud, with the cellophane like wrapping and remove the silver chip

## Step 10



- This is were the magnet was and were the chip was attached too.

## Step 11



- This is what the Finished product should look like. These are the things that you will find when you take apart you ear bud

To reassemble your device, follow these instructions in reverse order.