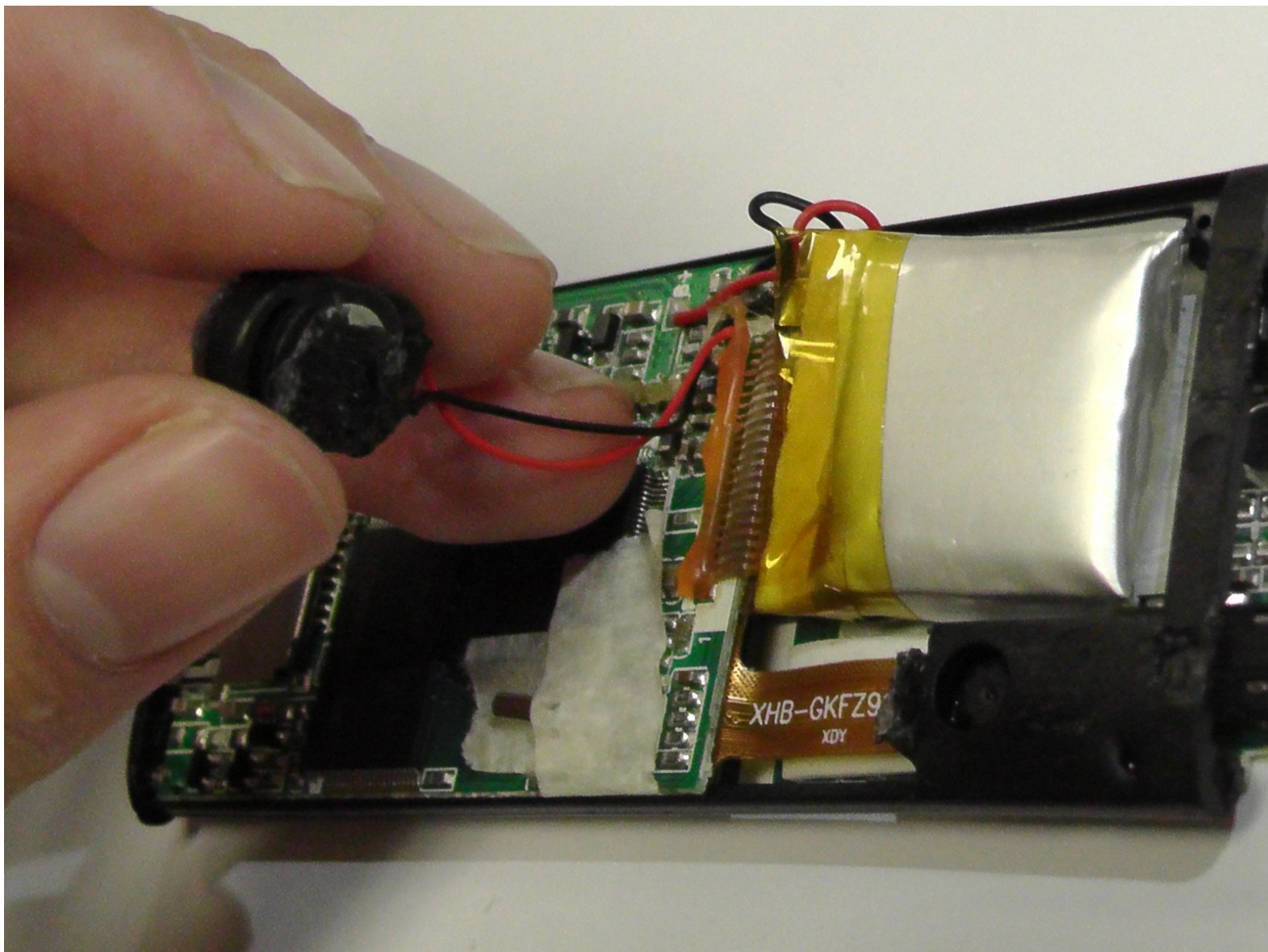




# Eclipse 180G2 MP3 Video Player speaker Replacement

Outlines the removal of the internal speaker. Soldering is required to attach a replacement.

Written By: Jesse Minor



---

## INTRODUCTION

The internal speaker is wired to the circuit board but not welded. If you have a replacement and the soldering skills to install it, this guide will help you identify and remove the internal speaker.

---

### TOOLS:

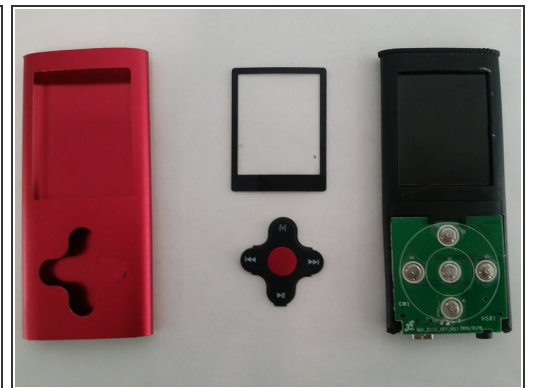
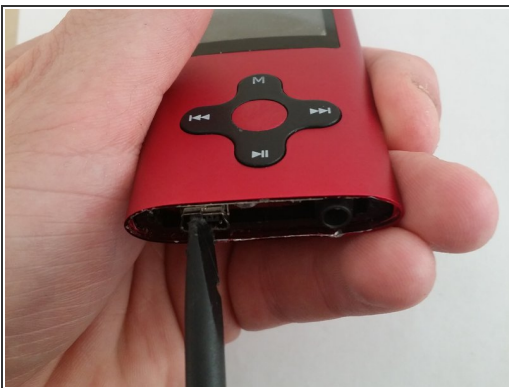
- [Phillips #00 Screwdriver](#) (1)
  - [Spudger](#) (1)
-

## Step 1 — Outer Case



- Remove the two screws on the bottom of the device with a Phillips head screwdriver.
- Use a spudger to remove the plastic plate from the bottom of the player.

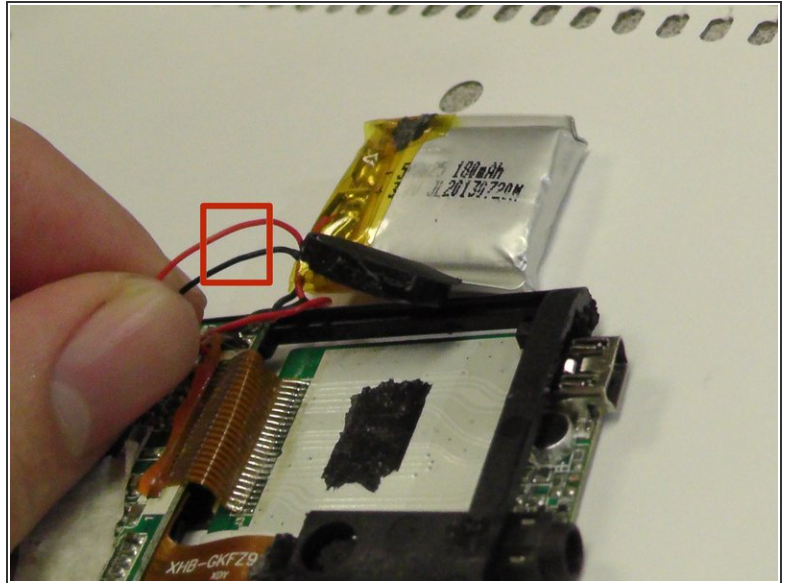
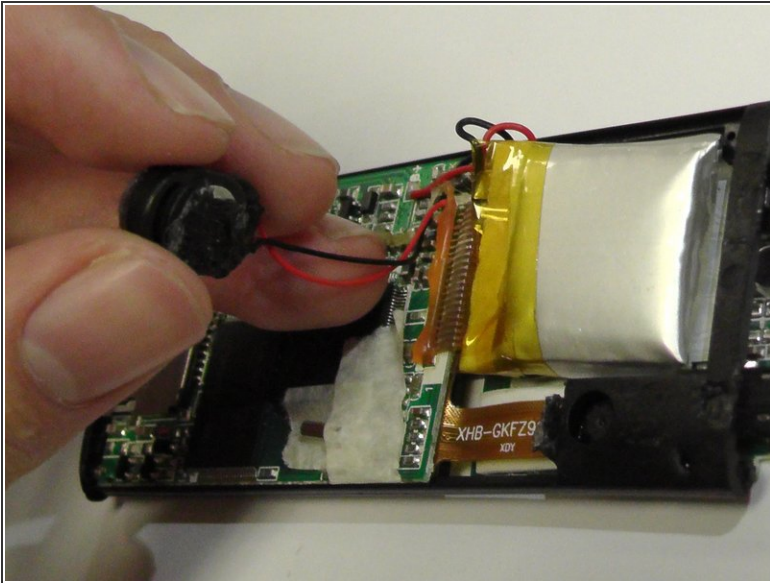
## Step 2 — Remove inner circuit from case shell



- Use the spudger to push the USB port on the bottom of the device inward.
- Hold the device firmly between two fingers. Be sure you aren't holding down the top of the device; the circuit board will slide out of the shell through that end.
- The plastic LCD cover and the key pad will now be free; they were held in place by the tension between the case and the internal circuit board.



### Step 3 — Internal Speaker



- Identify and pull the speaker away from the device.
- Use a wire cutter to sever the red and black cables connecting the speaker to the circuit board.

To reassemble your device, follow these instructions in reverse order.