



Eclipse MTE28VGM Toggle Button Replacement

This guide will demonstrate how to replace a faulty toggle button on the Eclipse MTE28VGM digital media player.

Written By: Tyler Hudgens



INTRODUCTION

This guide is used when the toggle button is no longer functioning properly. If you are experiencing a loose or broken toggle button it must be replaced to keep the device operating normally.



TOOLS:

- [JIS Driver Set](#) (1)
 - [Tweezers](#) (1)
-

Step 1 — Toggle Button



- Using the screwdriver with the J00 bit, remove the two 4.8 mm Phillips screws.

⚠ Use caution when removing the screws as they can strip easily.

Step 2



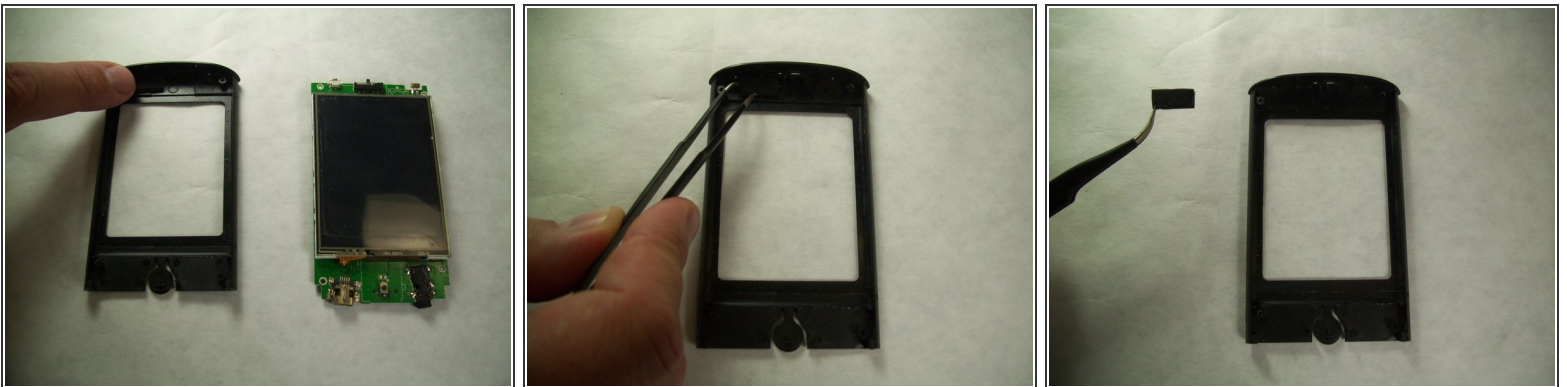
- Using the small metal pry bar, remove the bottom plastic cover.
- Using your thumb, press down on the home button and hold the metal casing. With your other hand hold the top plastic part of the device. At the same time slide the metal casing and the plastic casing apart
- ⓘ On occasion the battery can become swollen and make this process difficult. You might need to use the spudger to push on the bottom components to assist in the separation.

Step 3



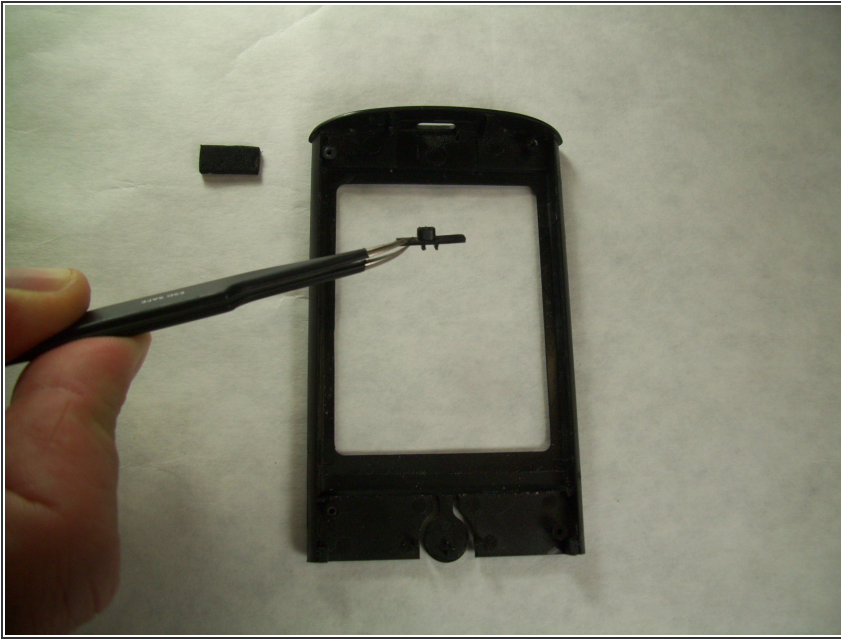
- Using the screwdriver, remove the four 4.8 mm Phillips head J00 screws at each corner of the motherboard.
- Remove the motherboard from the front plastic cover and screen. Replace the old motherboard with the new motherboard.

Step 4



- Use the angled tweezers to disconnect the toggle button covering.

Step 5



- Using the angled tweezers, disconnect the toggle button.

To reassemble your device, follow these instructions in reverse order.