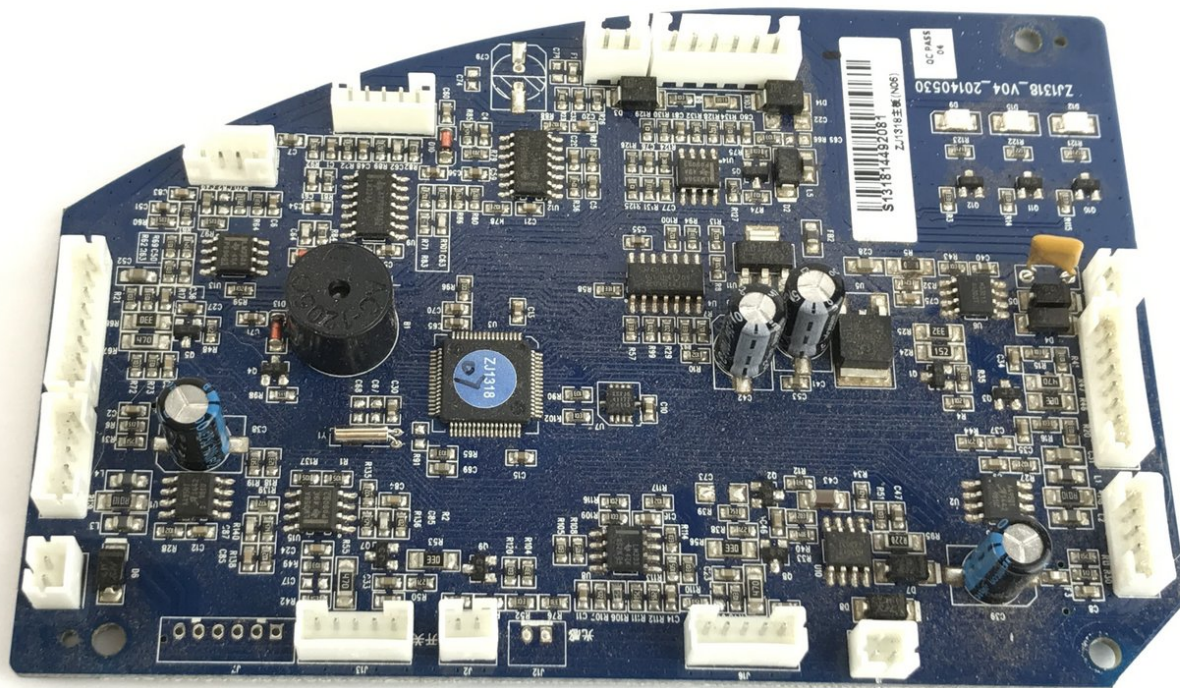




Ecovacs DEEBOT D35 Motherboard Replacement

This guide can be used to replace the Deebot D35 motherboard.

Written By: Kevin McKernan



INTRODUCTION

This guide can be used to replace the DEEBOT D35 motherboard. The Deebot D35 motherboard is responsible for controlling the vacuum's progress across floors. Special care must be taken when removing wires and the motherboard from the D35, as well as reassembly.



TOOLS:

- [Magnetic Project Mat](#) (1)
 - [iFixit Opening Tools](#) (1)
 - [Phillips #2 Screwdriver](#) (1)
-

Step 1 — Motherboard



- Flip the D35 onto its back.

Step 2



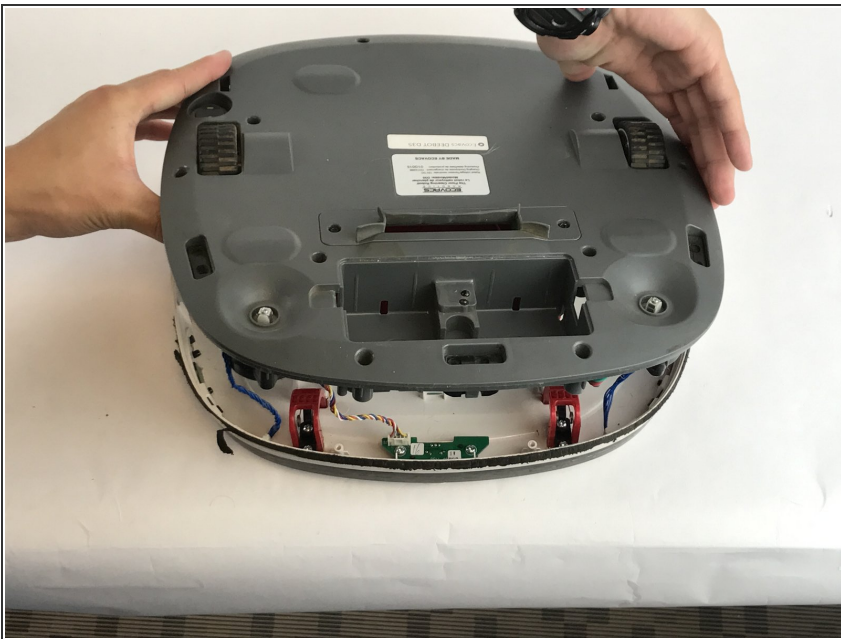
- Remove the 9 screws with a PH2 Phillips screwdriver on the underside of the D35. The screws are:
- 7 x 14mm screws
- 2 x 10mm screws

Step 3



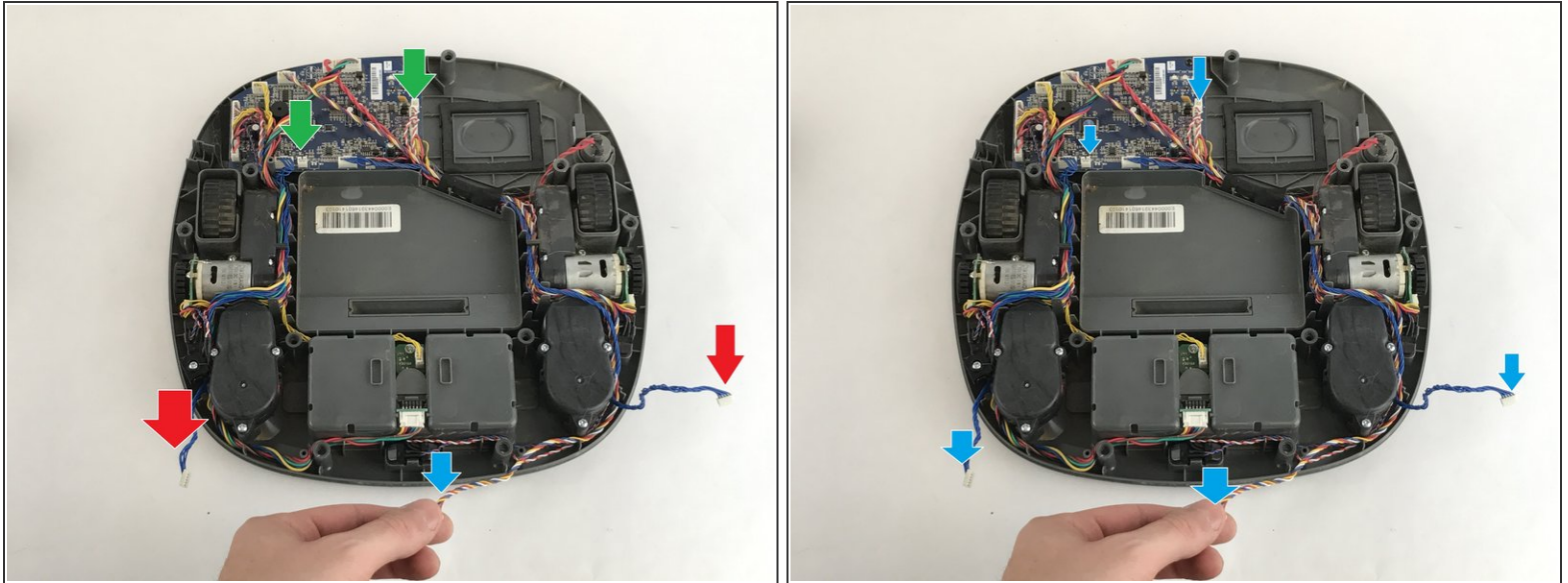
- Use spudger or plastic opening tool to separate the Deebot backside

Step 4



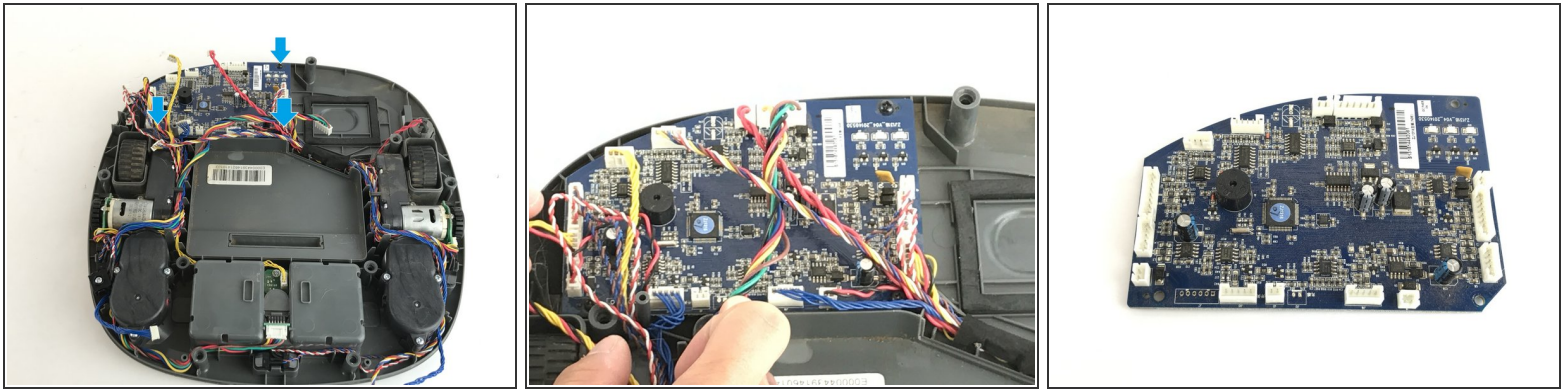
- Carefully lift the back cover from the body of the Deebot

Step 5



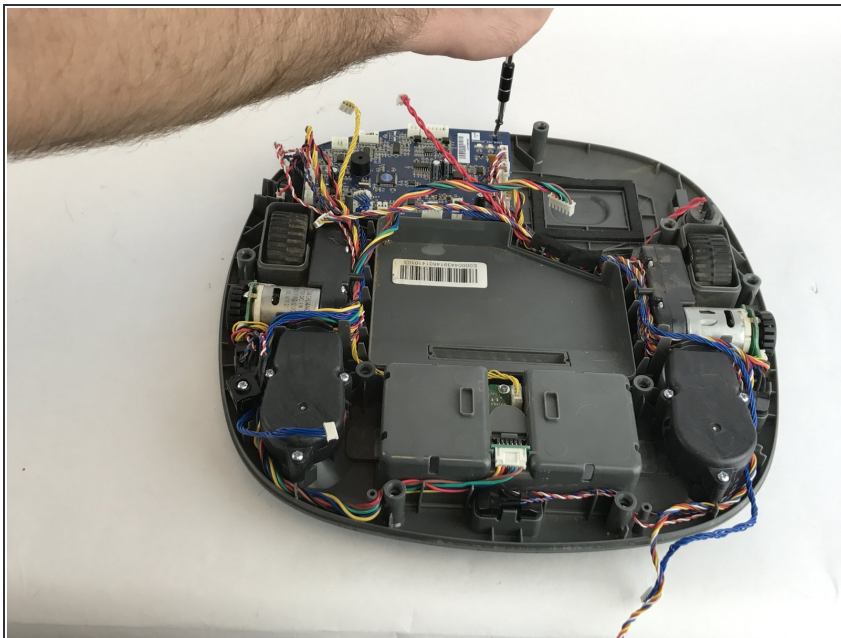
- There are 5 cables that need to be carefully disconnected before completely disconnecting the back cover:
- The 5 cables two blue cables on the front left and right side (located next to the sensor). Represented by the red arrows.
- Multicolor ribbon in the front center. Represented by the blue arrow.
- Two (black and red) two prong adapter connected to the motherboard. Represented by the green arrow.

Step 6



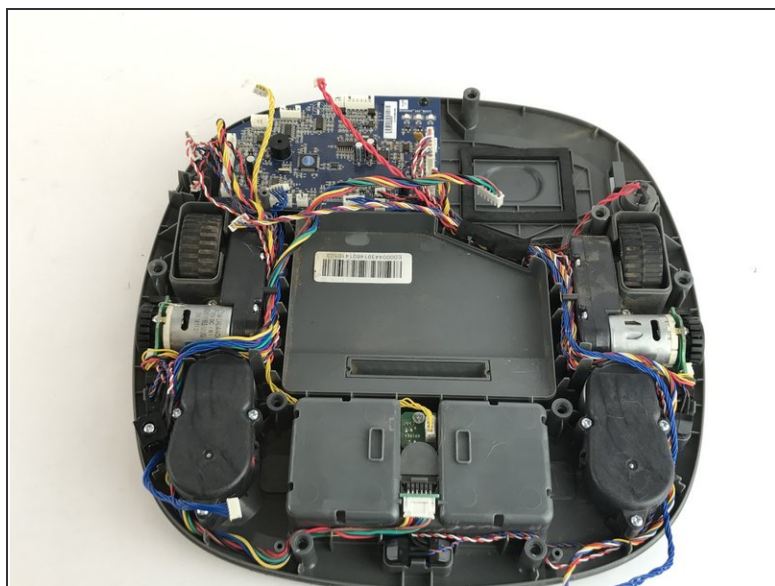
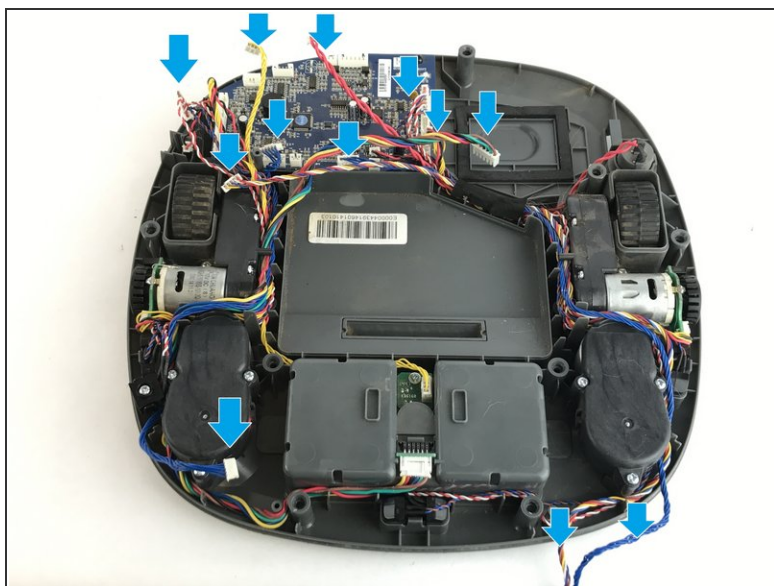
- Locate the 3 screws on the motherboard:
 - 2 x 14mm screws
 - 1 x 10mm screws

Step 7



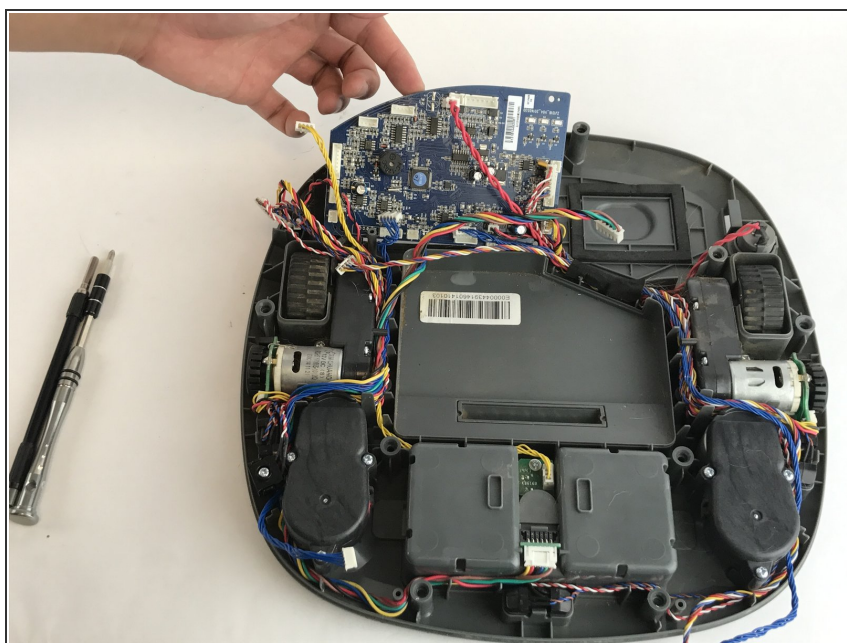
- Remove the screws from the motherboard with a PH2 Phillips Head Screwdriver. The screws are:
 - 2 x 14mm screws
 - 1 x 10mm screws

Step 8



- Locate and disconnect 12 cables bundles connected on the motherboard

Step 9



- Carefully disconnect the motherboard from the Deebot body.

To reassemble your device, follow these instructions in reverse order.