



Edco Cement Saw KL1465H 2015 Air Filter Replacement

Replace the air filter on the Edco Concrete Saw KL1465H.

Written By: Craig Lloyd



INTRODUCTION

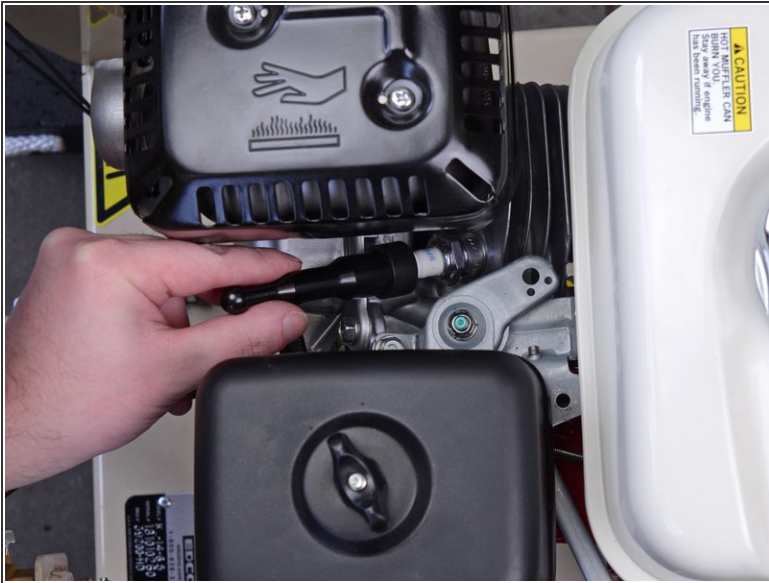
Follow this guide to remove and replace the air filter on the Edco Concrete Saw KL1465H. This procedure is required in order to replace the carburetor or remove the throttle cable.




TOOLS:

- [Wheel Chocks](#) (1)
-

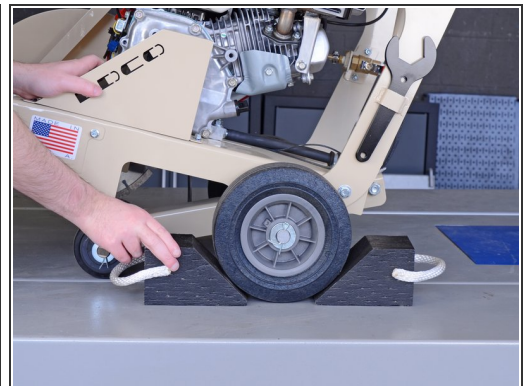
Step 1 — Disengage the Spark Plug



 Before you begin, ensure that the machine is powered down and cool to the touch.

- Disconnect the spark plug to prevent the engine from accidentally starting up during service:
 - Grab the plastic spark plug cap at the end of the spark plug wire.
 - Firmly pull to disconnect the spark plug cap from the spark plug.

Step 2 — Place Wheel Chocks



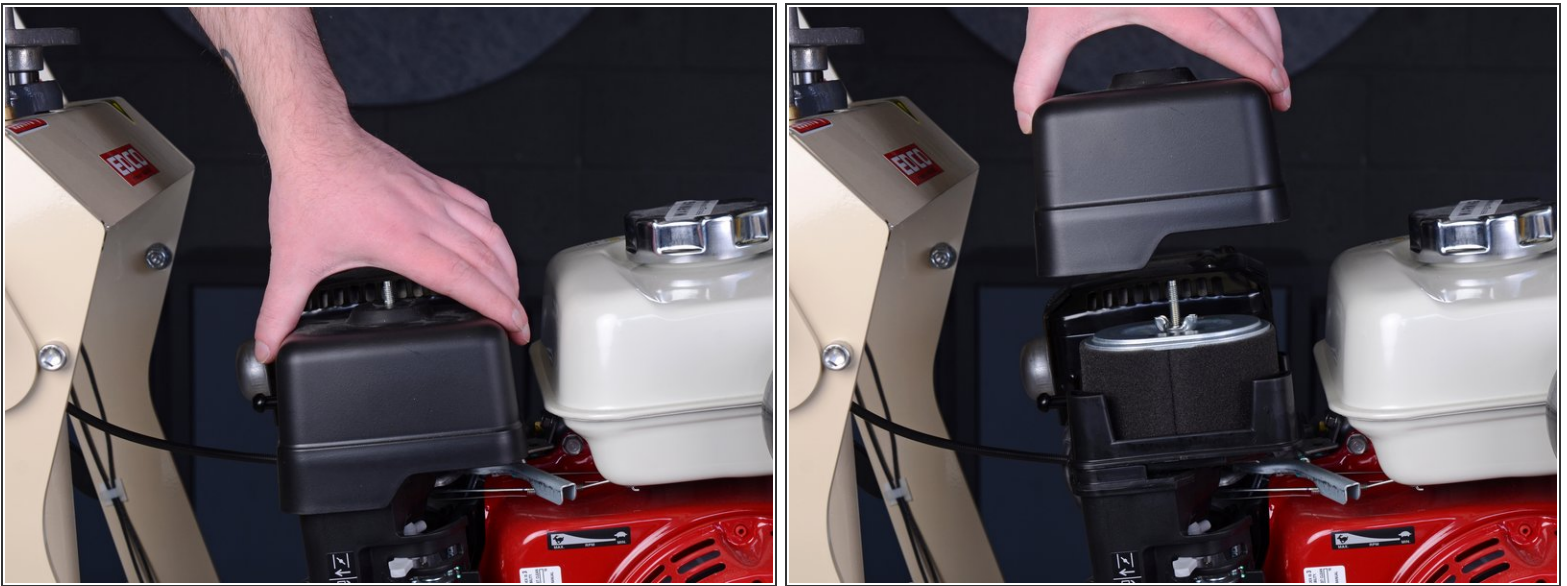
- To prevent the concrete saw from rolling during service, place wheel chocks in front of and behind a rear wheel.

Step 3 — Remove the Air Filter Cover



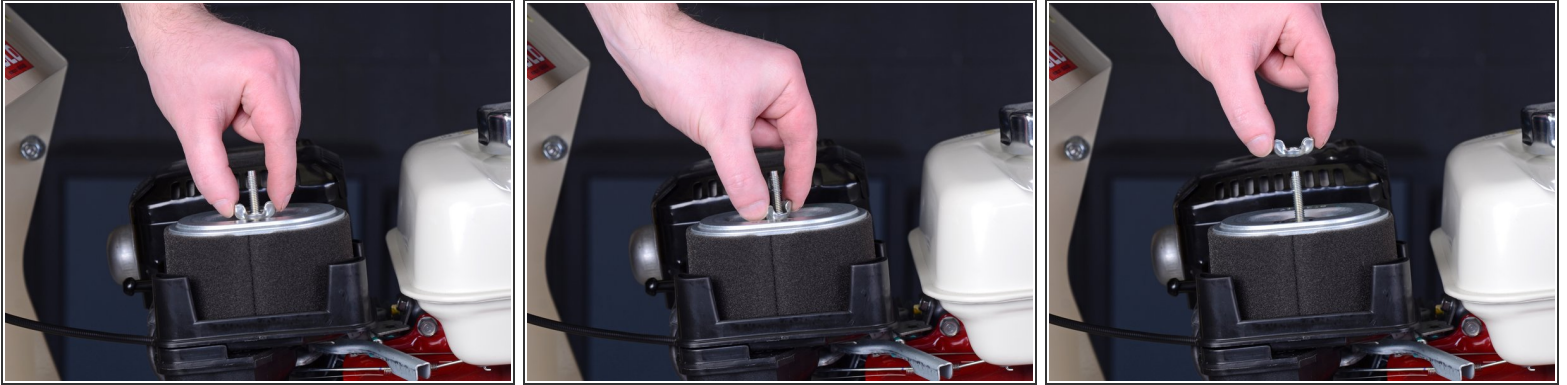
- Use your fingers to unscrew and remove the wing nut securing the air filter cover.

Step 4



- Lift the air filter cover straight up to remove it.

Step 5 — Remove the Air Filter



- Use your fingers to unscrew and remove the wing nut securing the air filter.

Step 6



- Grab the black plastic air filter platform and lift it straight up with the air filter to remove both components.

To reassemble your device, follow these instructions in reverse order.