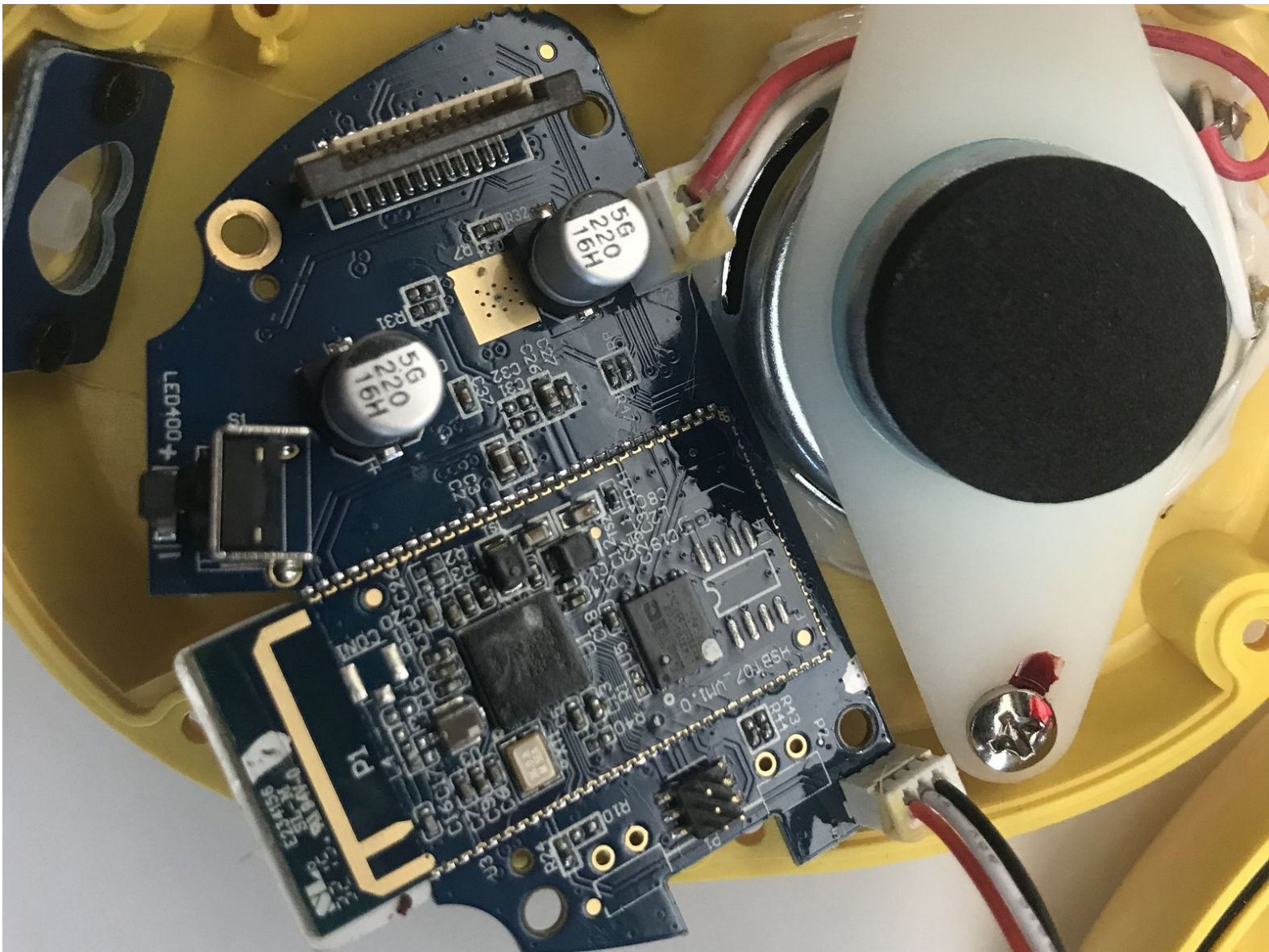




Edwin the Duck Motherboard Replacement

This guide will help you step by step on how to replace the motherboard in Edwin.

Written By: Caleb Kim



INTRODUCTION

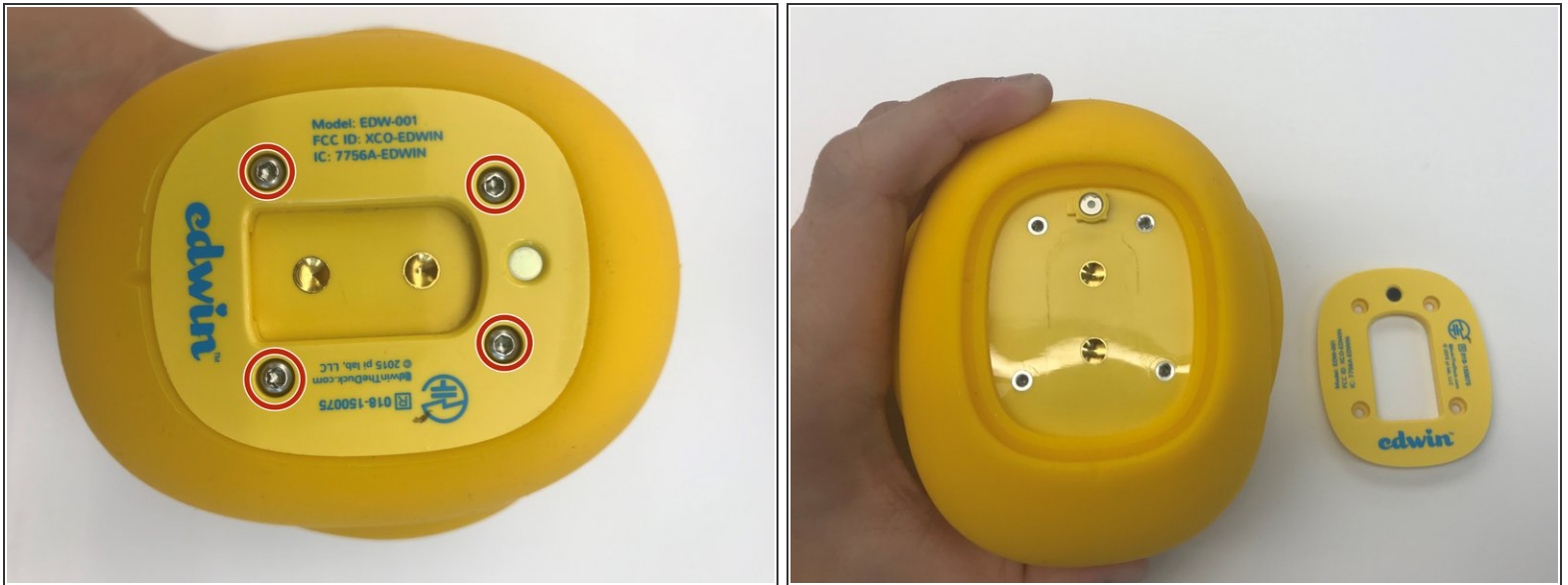
Edwin the interactive toy cannot work if the central most crucial part of Edwin, which is the motherboard, does not work. If there is water damage, and Edwin is no longer working, this guide will take you through the steps of replacing it.



TOOLS:

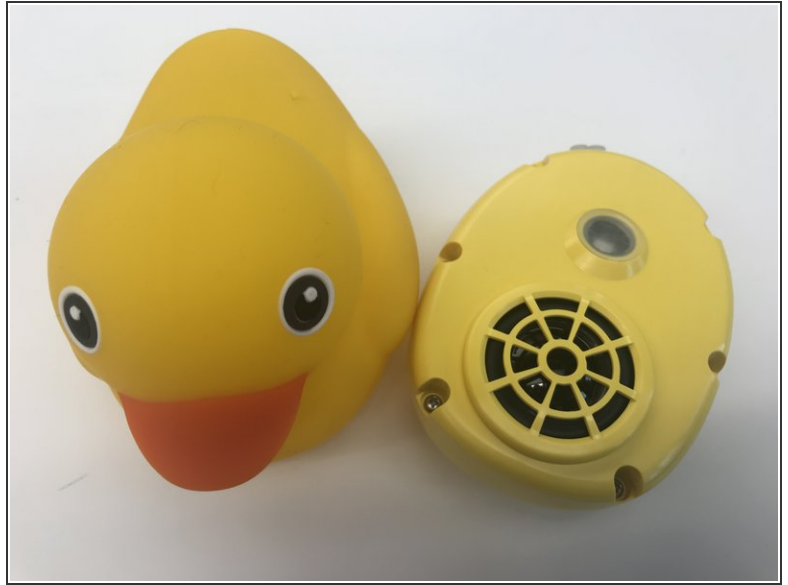
- [iFixit Opening Tools](#) (1)
 - [T8 Torx Screwdriver](#) (1)
 - [J1 Screwdriver Bit](#) (1)
-

Step 1 — Motherboard



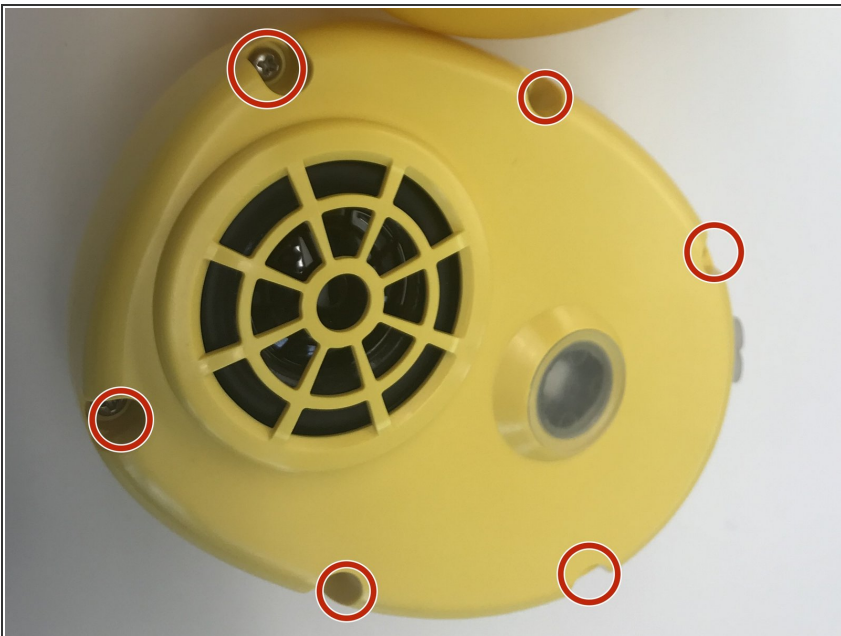
- Unscrew the four 9mm screws with a T8 screwdriver bit
- Remove the back plate off

Step 2



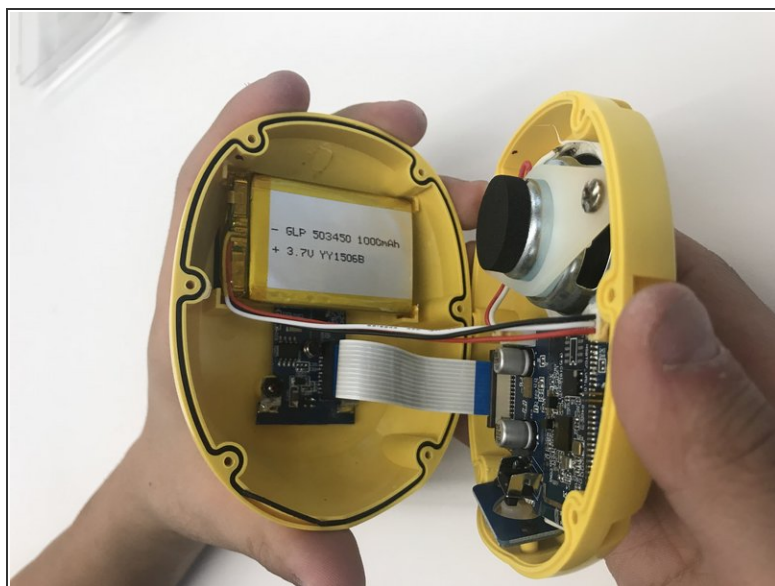
- Carefully take off the rubber skin.
- ⓘ Be patient and don't rush. You don't want to rip or damage the rubber skin resulting in losing the waterproof cover.

Step 3



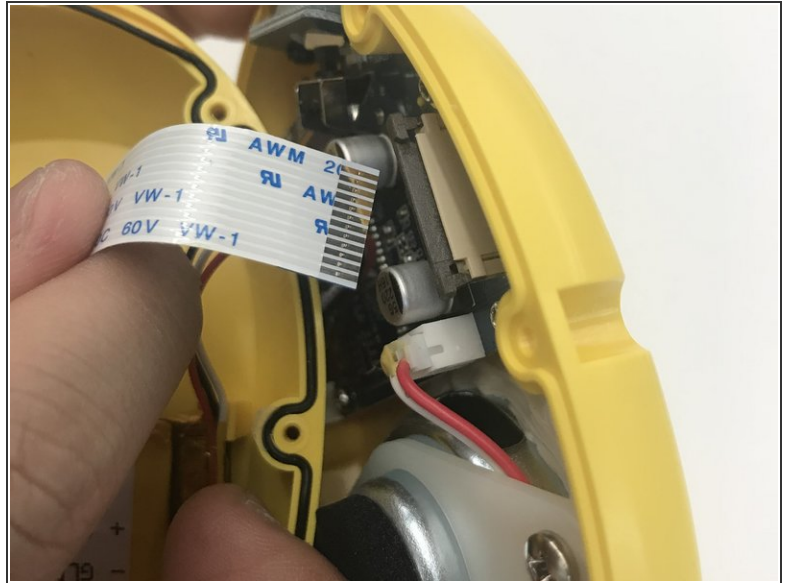
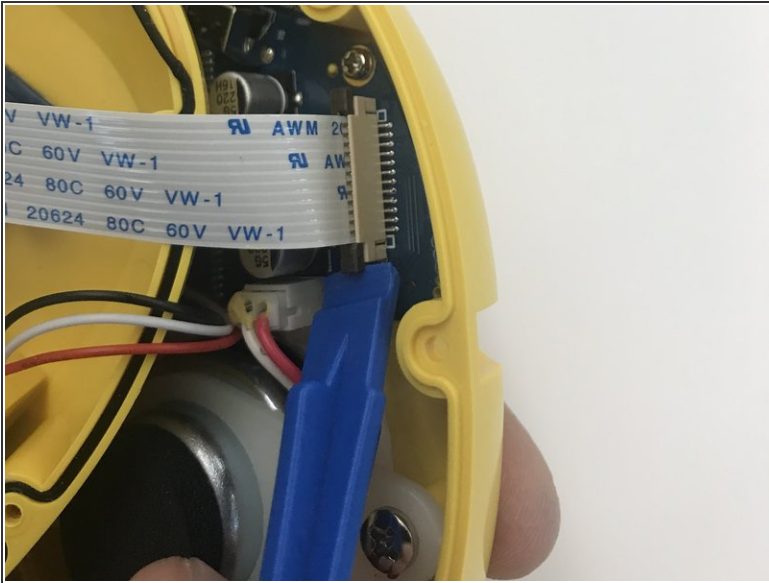
- Using the J1 screwdriver bit, unscrew all six 9 mm screws that run along the border.

Step 4



- Use the plastic opening tool to open the inside of the duck.
- ⚠ Be **very careful** when splitting the two halves apart. There are wires connecting to both sides.
Remember to open slowly.

Step 5



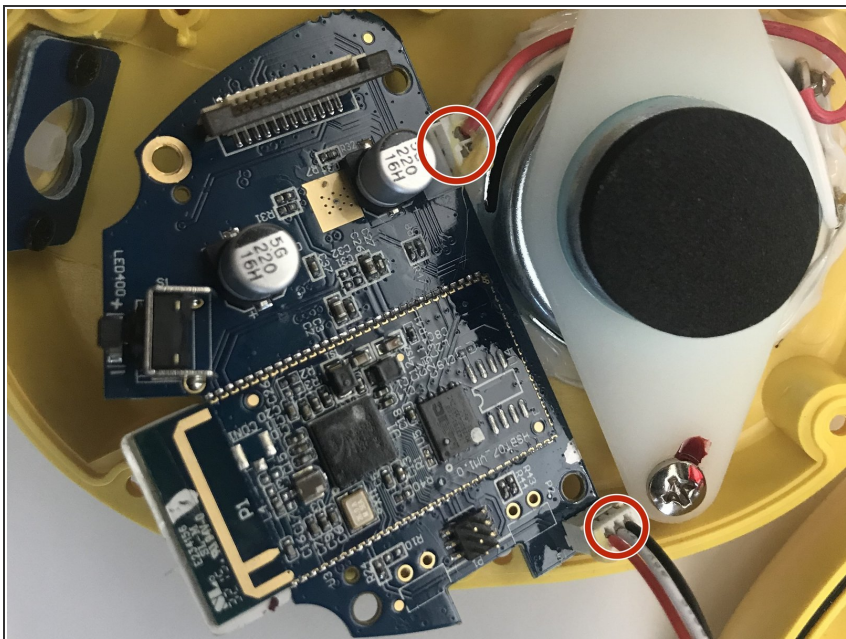
- Using the plastic opening tool pull up the black tab up until it stops.
- ⚠ Be careful not to pull up the black tab too far up, otherwise the cable won't be secure anymore.
- Pull up the white cable tab, up **slowly**

Step 6



- Use the J1 screwdriver bit to unscrew all four 9 mm screws attached to the motherboard.

Step 7



- Remove the top connector as you see in the picture.
- Replace the new motherboard and you are finished.

To reassemble your device, follow these instructions in reverse order.