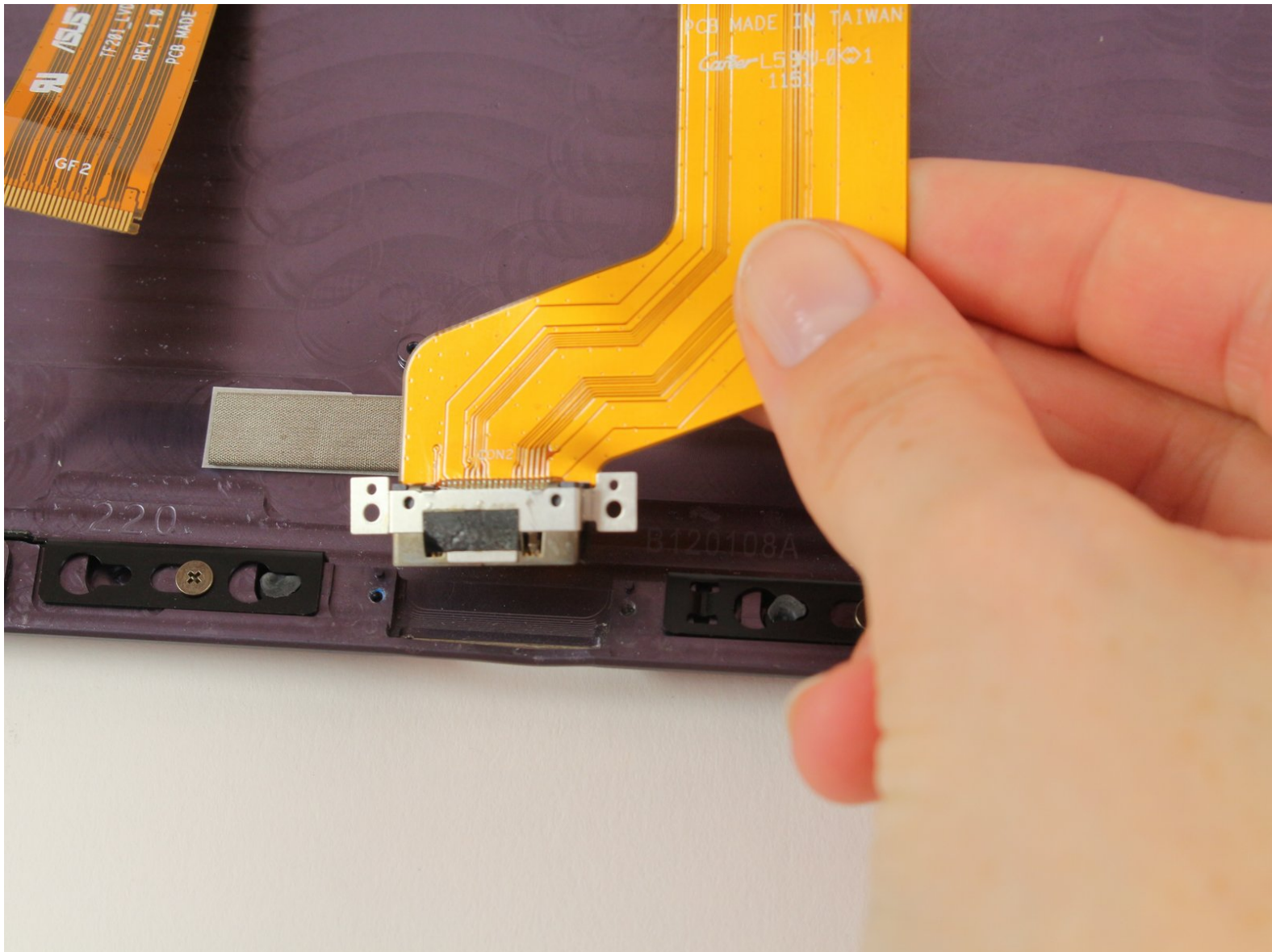




Eee Pad Transformer Prime TF201 Charging Port Replacement

This guide will walk you through the steps of replacing the charging port of your Eee Pad Transformer Prime TF201.

Written By: Aaron Morland



INTRODUCTION

The charging port of your device can fail due to hard impact or general fatigue from repeated use. After purchasing a new charging port and following this guide, your device will be ready to work for you again.

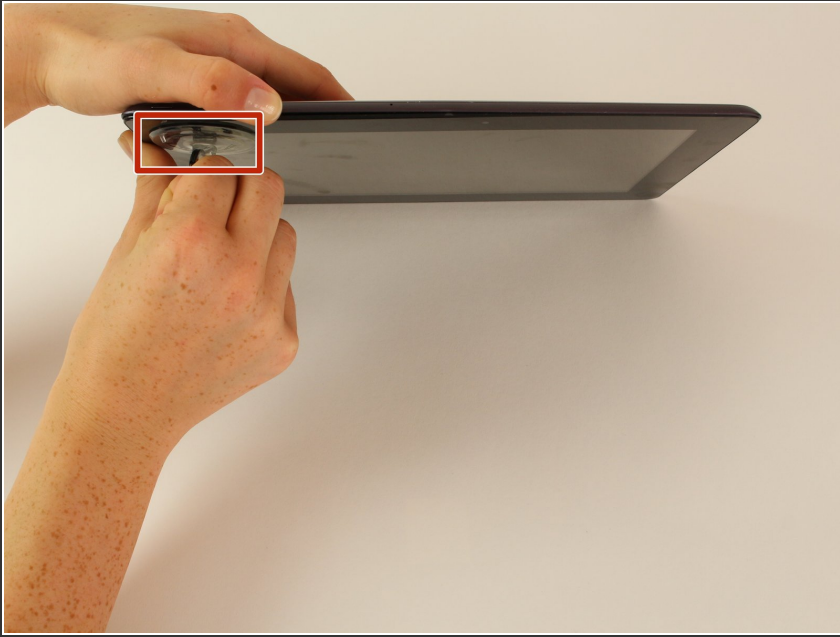
TOOLS:

- [iFixit Opening Tools](#) (1)
- [Suction Handle](#) (1)
- [Phillips #00 Screwdriver](#) (1)
- [Precision Tweezers Set](#) (1)
- [Magnetic Project Mat](#) (1)

PARTS:

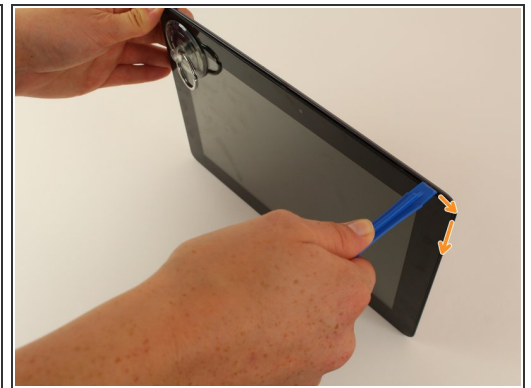
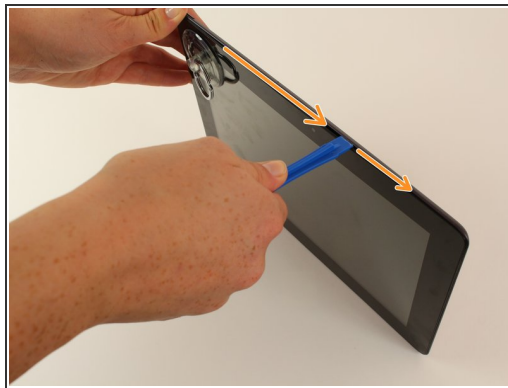
- [ASUS Eee Pad Transformer Prime Charging Assembly](#) (1)

Step 1 — Opening Your Device



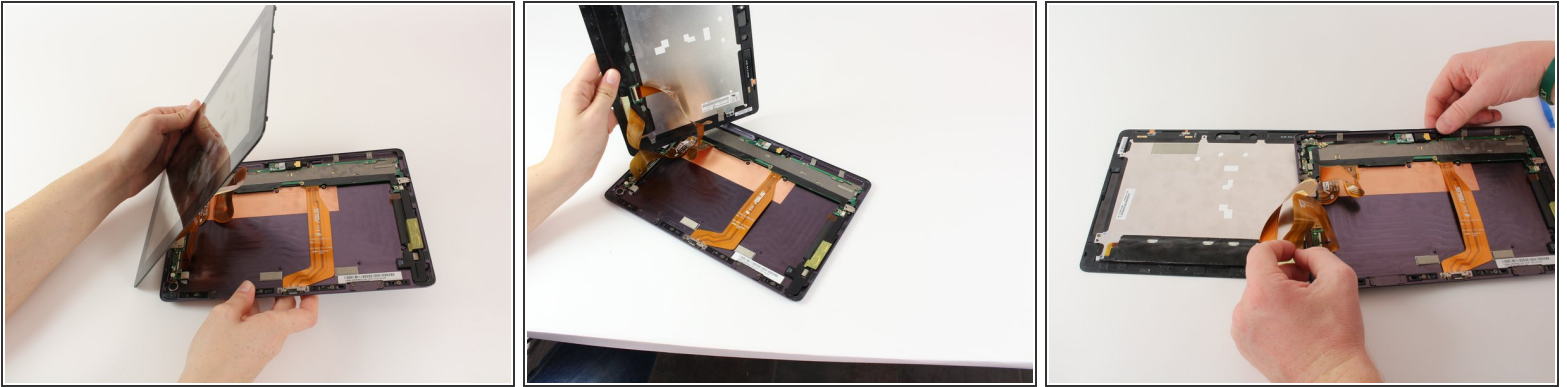
- Power down your device.
- Place the small suction cup on a corner of the screen and lightly pull up to expose a seam between the screen and case.

Step 2



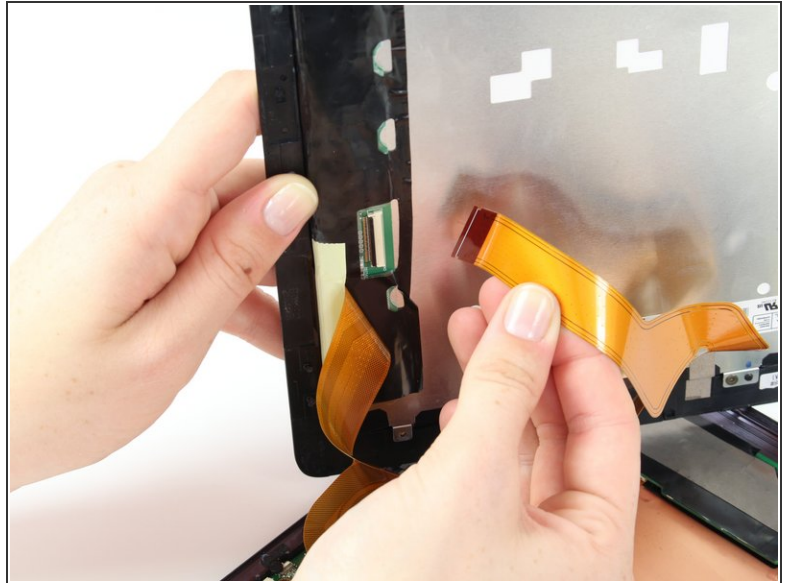
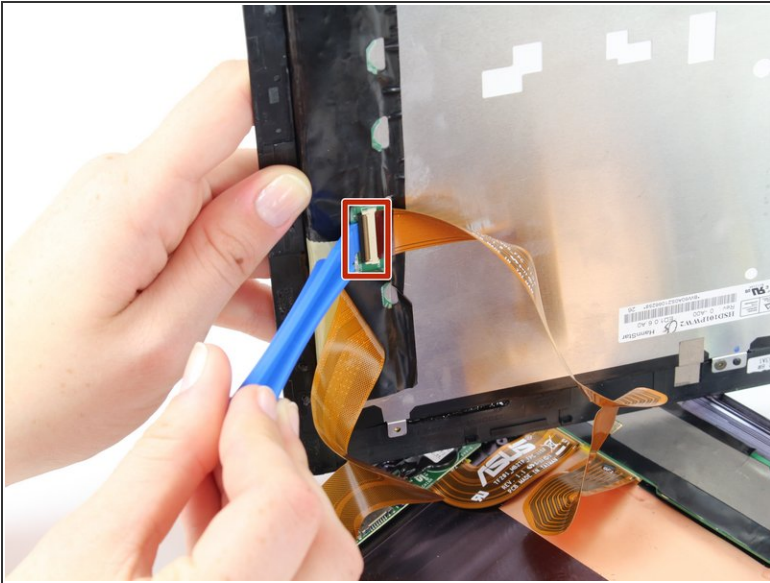
- Insert the plastic opening tool into the seam near the corner of the device.
- Slowly slide the tool around the perimeter of the device, gradually prying up the screen.
 - ⓘ It is normal to hear snaps as the spring clips holding the screen in place are released.
 - ⓘ It is also normal to hear adhesive separating, as a small amount is used to help secure the screen.

Step 3



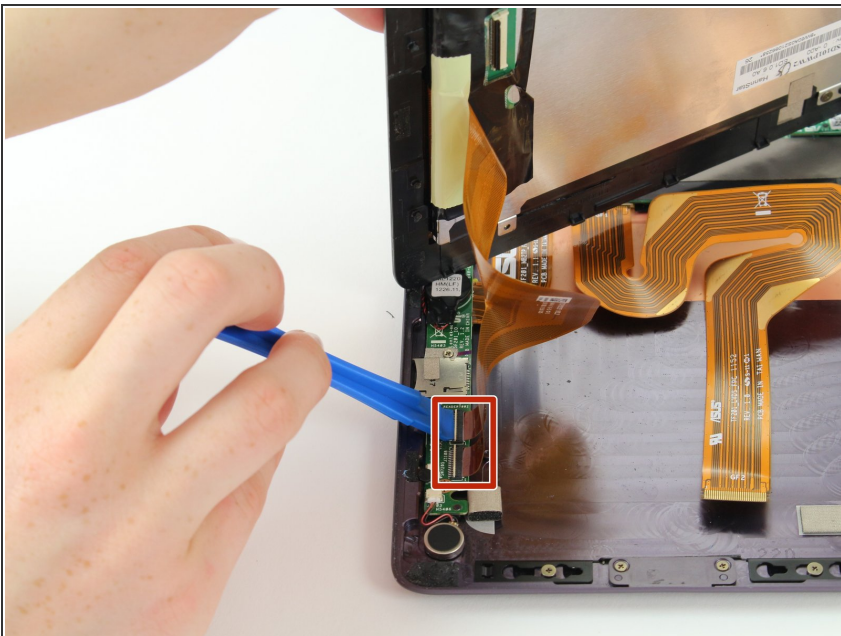
- When the screen is free of all spring clips and adhesive, slowly open the device like a clam shell with the hinge being the left hand side of the device.
 - ⚠ Do not completely separate the screen from the case by more than a few inches, as they are still connected by three orange ribbon cables.
- Safely place the device back on the table by laying the screen face down.
 - ⓘ There will be some slight overlapping of the back of the case over the screen.

Step 4



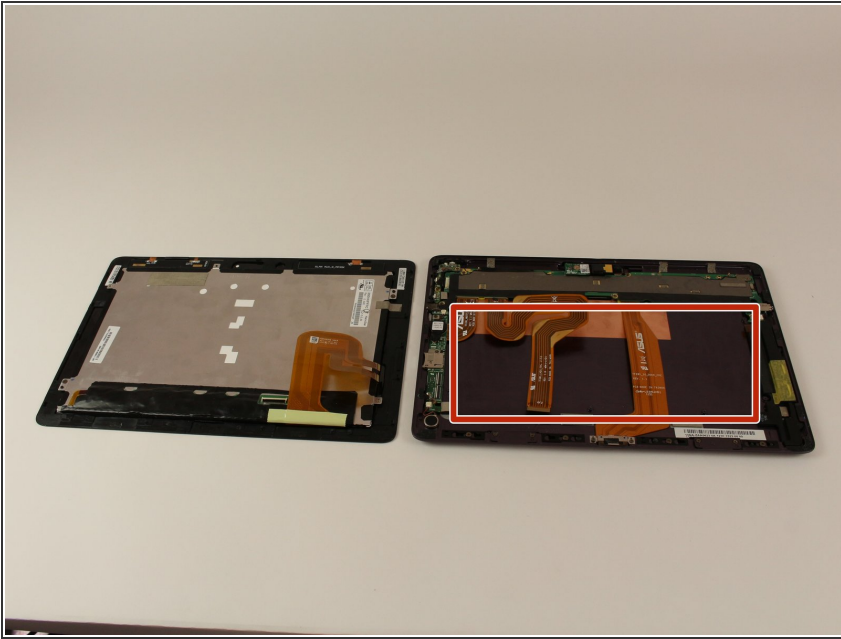
- Disconnect the ribbon cable by placing a plastic opening tool under the black plastic tab that is on the opposite side of the port as the ribbon cable.
- Pry upward until the black tab moves 90 degrees, and gently pull the ribbon cable out of the port.

Step 5



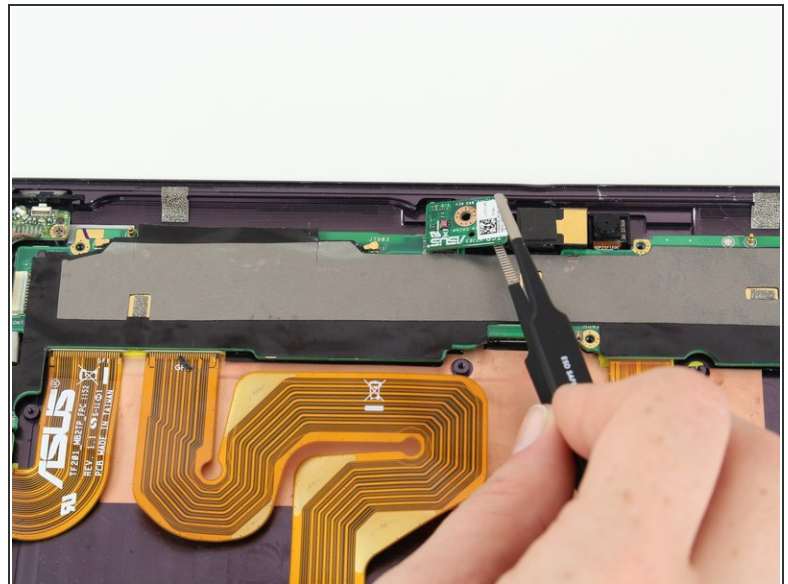
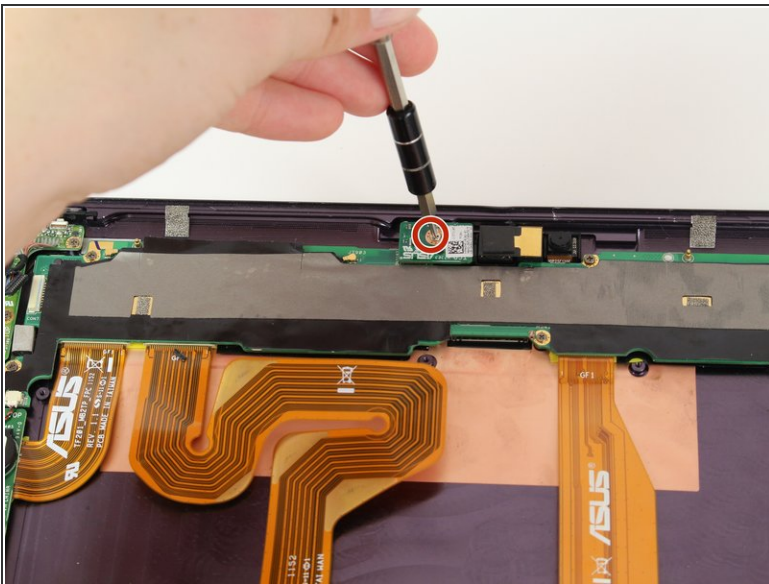
- Place a plastic opening tool under the black plastic tab on one of the ribbon cable ports.
- Pry upward until the black tab moves 90 degrees, and gently pull the ribbon cable out of the port.
- Repeat the previous process to remove the other ribbon cable.

Step 6



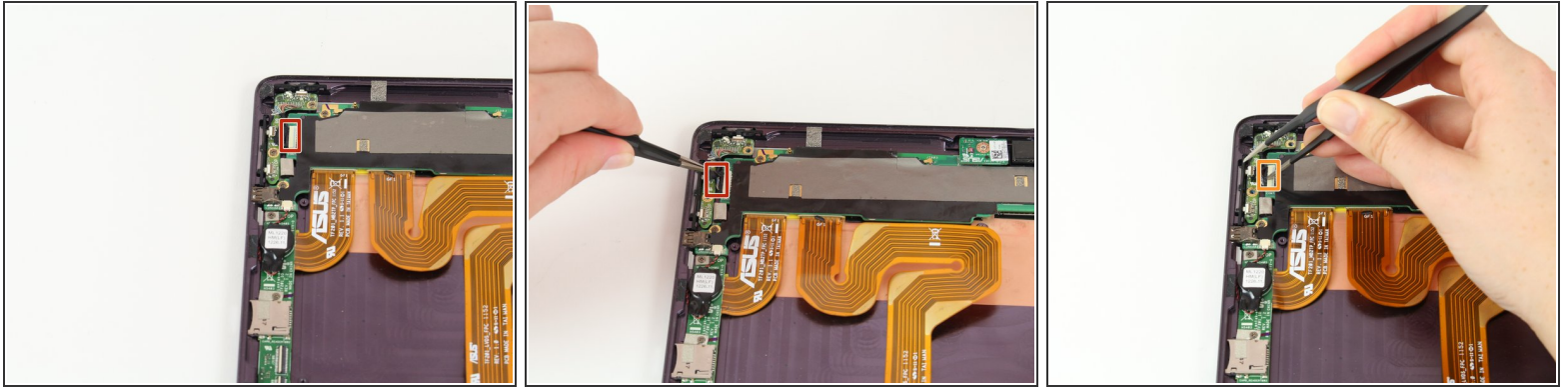
- Remove the battery (secured by six screws and a white wire connector) by following the removal portion of [this battery replacement guide](#).
- ⓘ The device that we wrote this guide for did not come with a battery, so we cannot include it in our own guide steps.
- ⓘ The battery is removed during all repairs to protect against short circuits, shocks, and internal damage to the device.

Step 7 — LED Chip



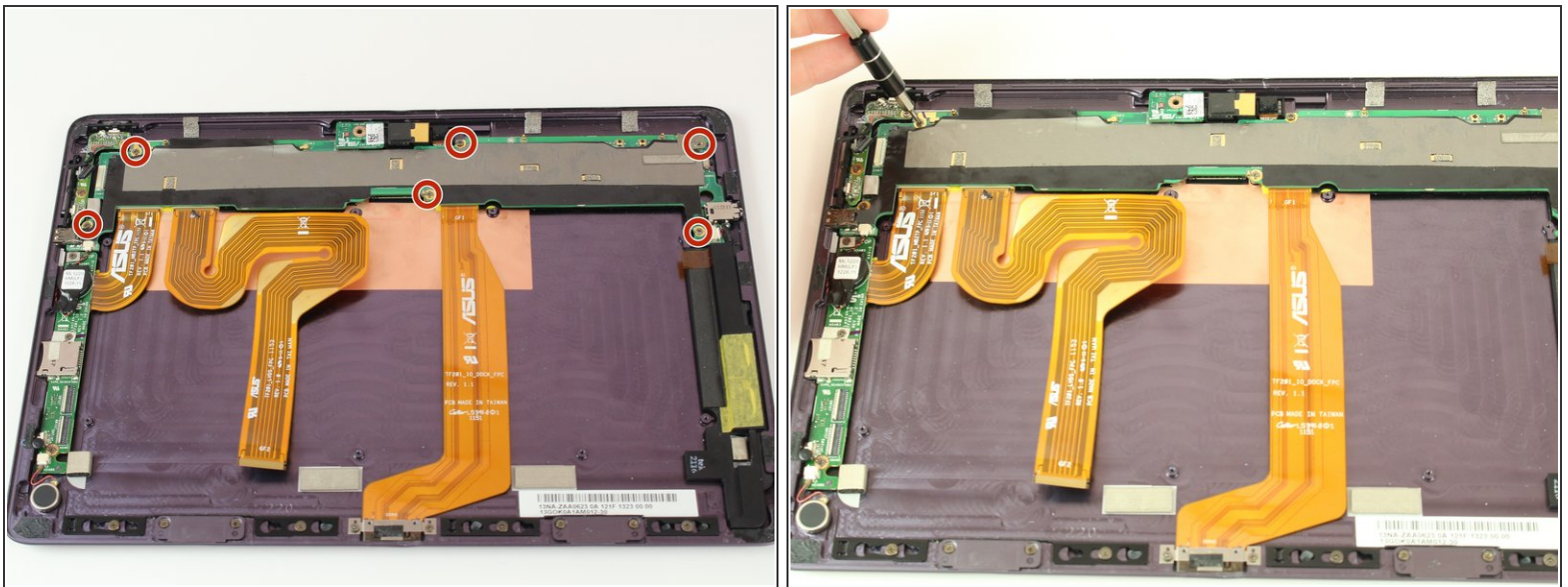
- With a Phillips #00 screwdriver, remove the one 3.8 mm screw in the LED chip. The LED chip is a small green chip (about 1 square centimeter) located at the top center of the device.
- Gently remove the chip with a pair of precision tweezers by grabbing the chip from one side, being careful not to pinch on a black piece of hardware on the chip.

Step 8 — Charging Port



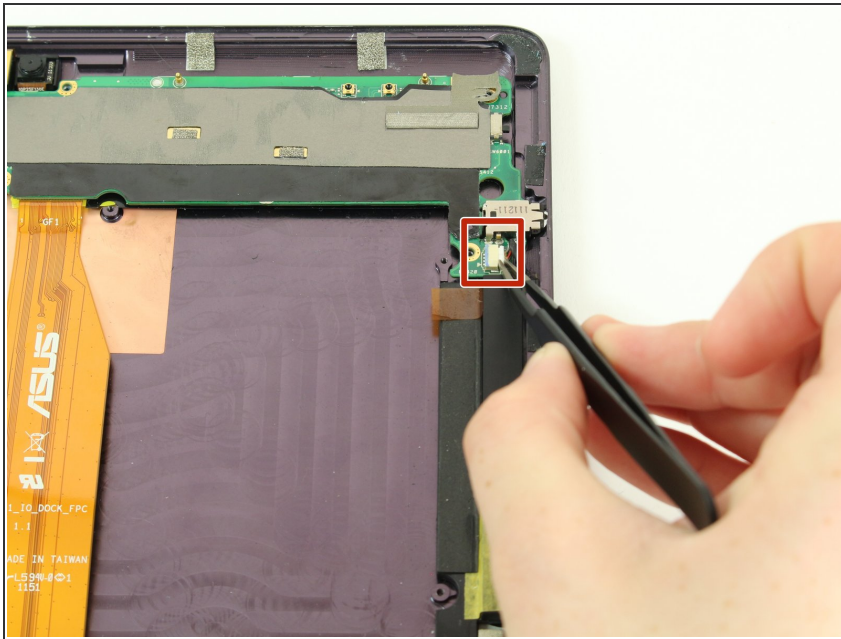
- With precision tweezers, pull back the strip of black tape covering the connection between the button key switch and the motherboard.
 - Disconnect the wires by using precision tweezers to gently *pushing* the black plug out of the white receptacle.
- ⚠ Avoid pulling the black plug out with the tweezers. It is easy for the tweezers to slip and sever the wires to the plug.

Step 9



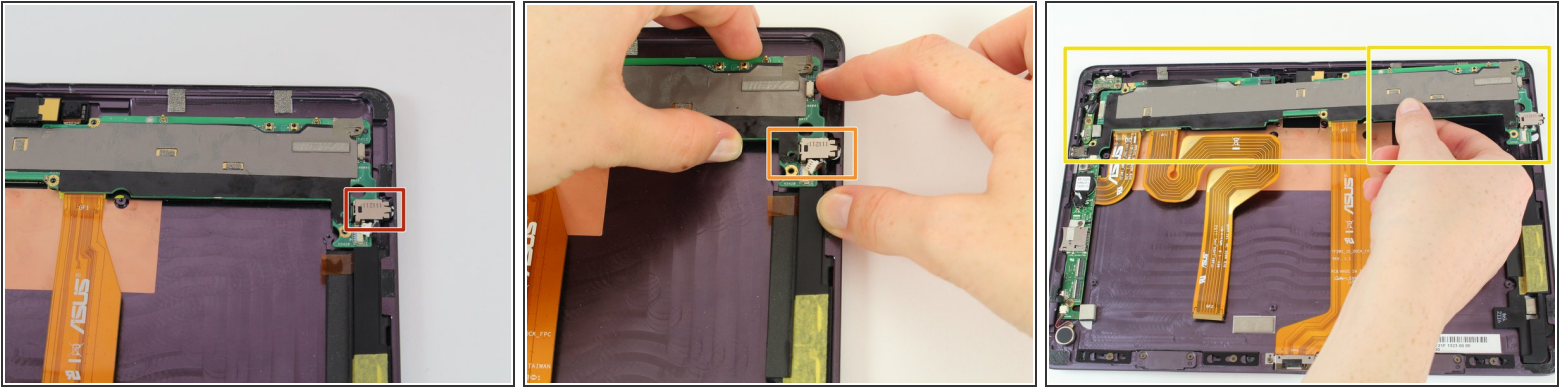
- Using a Phillips #00 screwdriver, remove six 2.5mm screws on the motherboard.

Step 10



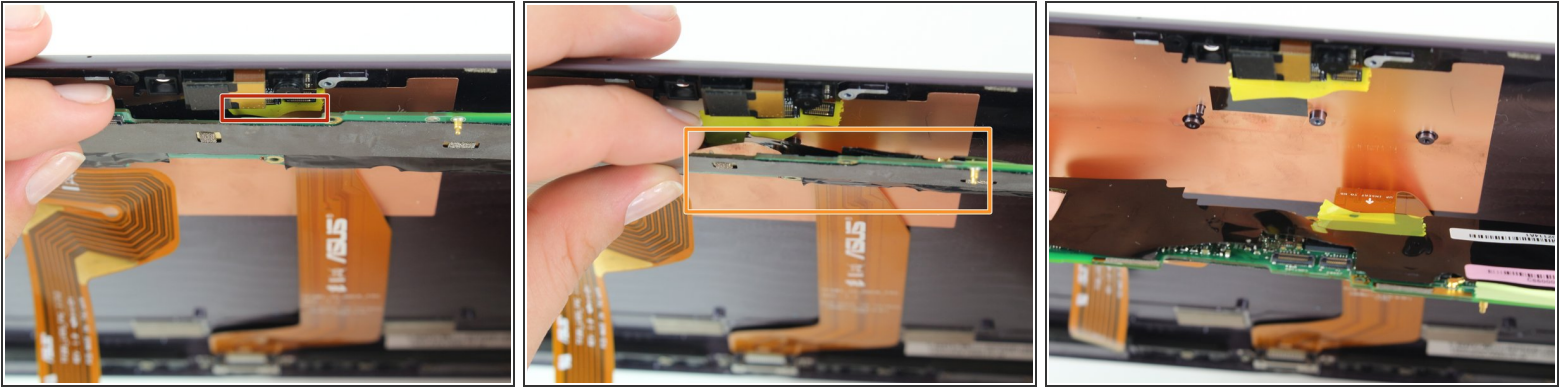
- Disconnect the speaker assembly from the motherboard by using precision tweezers to unplug the white plug from its tan receptacle.

Step 11



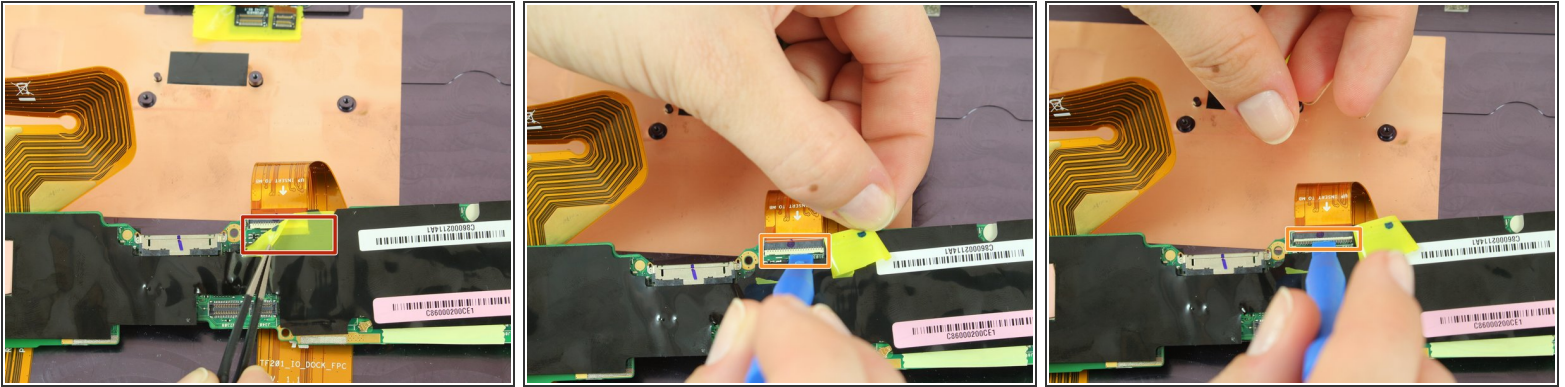
- Disengage the right side of the motherboard by gently sliding the audio jack out of the device case.
- With one hand, gently pull the wall of the device outward. With your other hand, pull the motherboard and audio jack to the inside.
 - ⚠ Be careful to not snap the motherboard. You may notice some flexing in the motherboard as you pull the audio jack in. Keep this flexing to a minimum.
- Remove the motherboard by lifting the right side, and sliding the motherboard slightly to the right to free the left edge.
 - ⚠ Do not completely separate the motherboard from the case, as it is still connected to the case with tape and ribbon cables.

Step 12



- Disengage the camera connections and yellow tape by gently pulling up on the motherboard while holding the yellow tape and camera connections down.
- ✦ You will need to align the camera connections so they re-engage one another during reassembly.
- ⓘ A black piece of tape covers the bottom of the motherboard. Do not remove the black tape from the motherboard, only the yellow tape from the black tape.
- Fold the motherboard toward you 180 degrees and set it down in the middle of the case.
- ⓘ In this position, two ribbon cable ports covered by yellow tape should be visible on the motherboard.

Step 13



- With precision tweezers, peel back the yellow tape in the center of the motherboard to expose the ribbon cable to the charging port.
- ☑ Leave the right hand side of the yellow tape attached, as you will need to recover the connection during reassembly.
- Lift the tan tab on the back of the ribbon cable port upward 90 degrees with a narrow plastic opening tool.
- Pull the ribbon cable out of the port, freeing it from the motherboard.

Step 14



- With a Philips #00 screwdriver, remove the two 2.5mm screws on the charging receptacle.
- Remove the charging receptacle and ribbon cable.
- ⓘ The ribbon cable and receptacle is considered one piece, and replacement parts are sold as one unit.

To reassemble your device, follow these instructions in reverse order.