



Eee Pad Transformer Prime TF201 LED Chip Replacement

Replace the LED chip in your Asus Eee Pad Transformer Prime TF201.

Written By: Aaron Morland



INTRODUCTION

The LED Chip is responsible for the rear camera flash and flashlight functions. This is a guide to replacing the chip with a new one, if the current one in your device is malfunctioning.

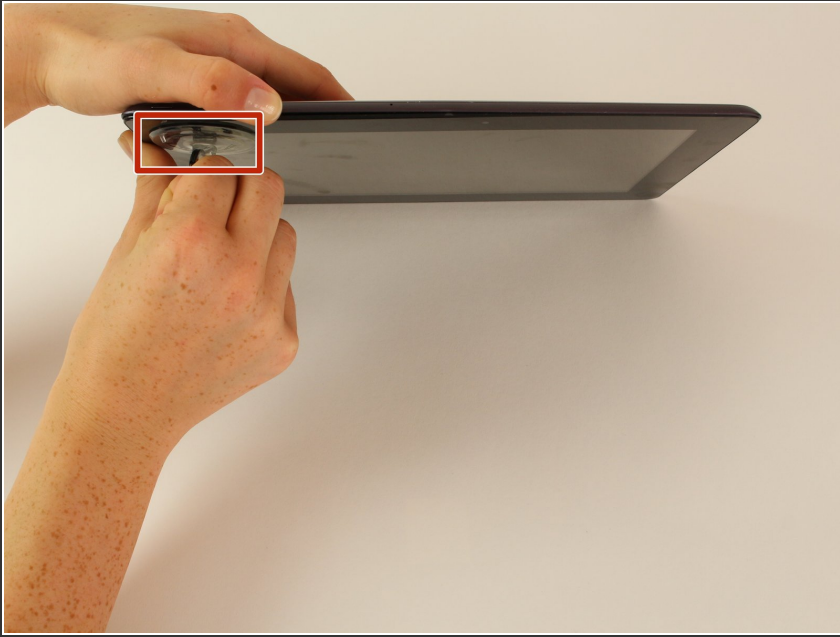
NOTE: You may omit step six of this guide, removing the battery.



TOOLS:

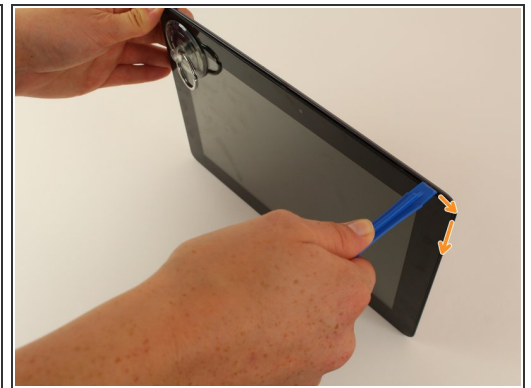
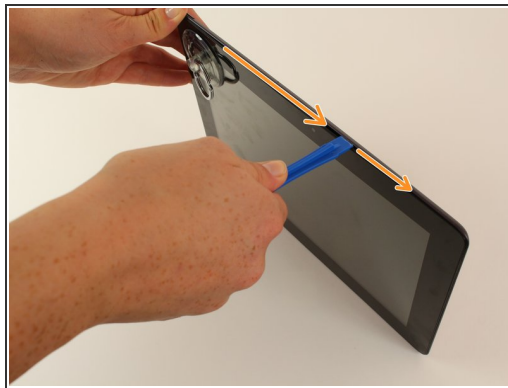
- [iFixit Opening Tools](#) (1)
 - [Suction Handle](#) (1)
 - [Phillips #00 Screwdriver](#) (1)
 - [Precision Tweezers Set](#) (1)
 - [Magnetic Project Mat](#) (1)
-

Step 1 — Opening Your Device



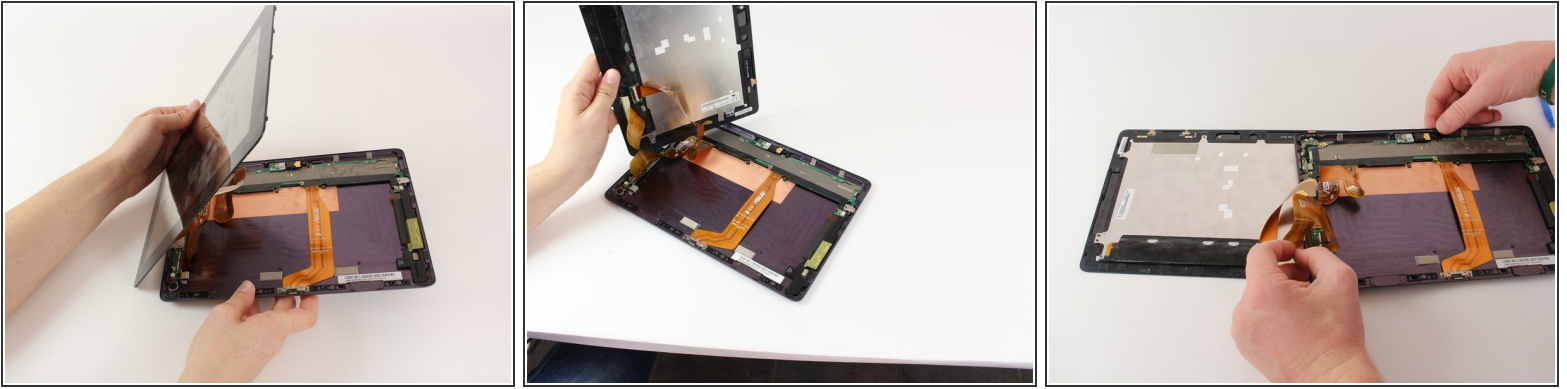
- Power down your device.
- Place the small suction cup on a corner of the screen and lightly pull up to expose a seam between the screen and case.

Step 2



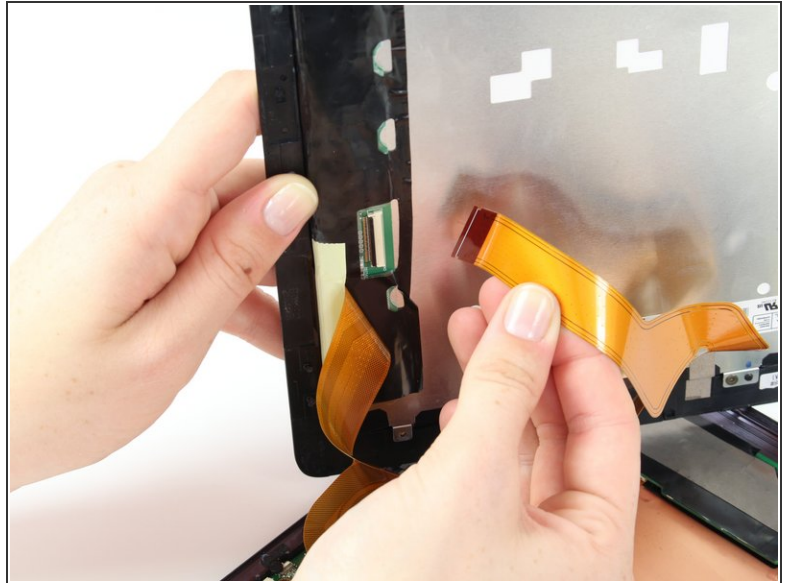
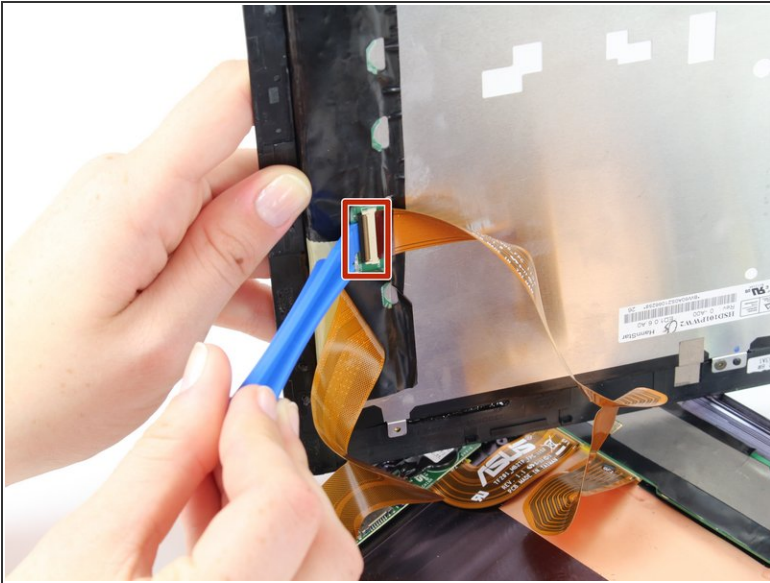
- Insert the plastic opening tool into the seam near the corner of the device.
- Slowly slide the tool around the perimeter of the device, gradually prying up the screen.
 - ⓘ It is normal to hear snaps as the spring clips holding the screen in place are released.
 - ⓘ It is also normal to hear adhesive separating, as a small amount is used to help secure the screen.

Step 3



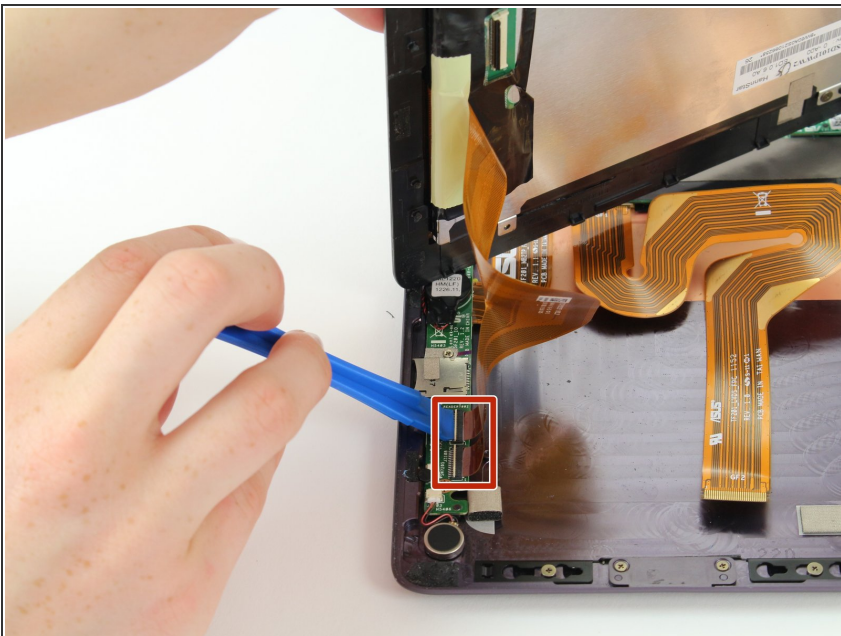
- When the screen is free of all spring clips and adhesive, slowly open the device like a clam shell with the hinge being the left hand side of the device.
 - ⚠ Do not completely separate the screen from the case by more than a few inches, as they are still connected by three orange ribbon cables.
- Safely place the device back on the table by laying the screen face down.
 - ⓘ There will be some slight overlapping of the back of the case over the screen.

Step 4



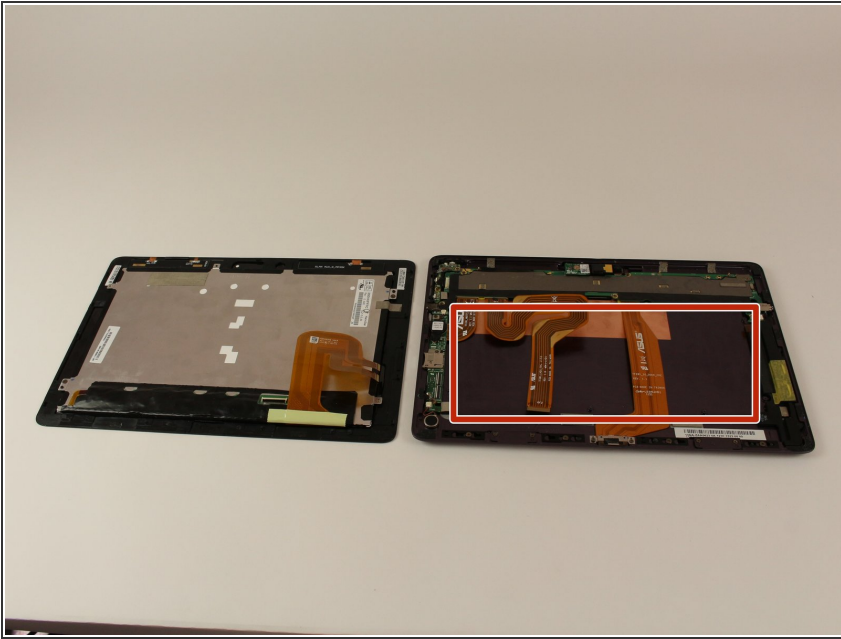
- Disconnect the ribbon cable by placing a plastic opening tool under the black plastic tab that is on the opposite side of the port as the ribbon cable.
- Pry upward until the black tab moves 90 degrees, and gently pull the ribbon cable out of the port.

Step 5



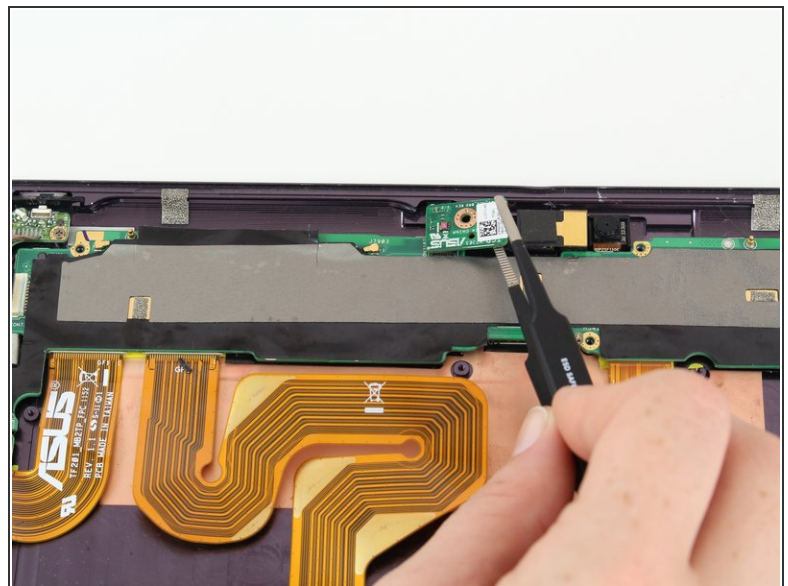
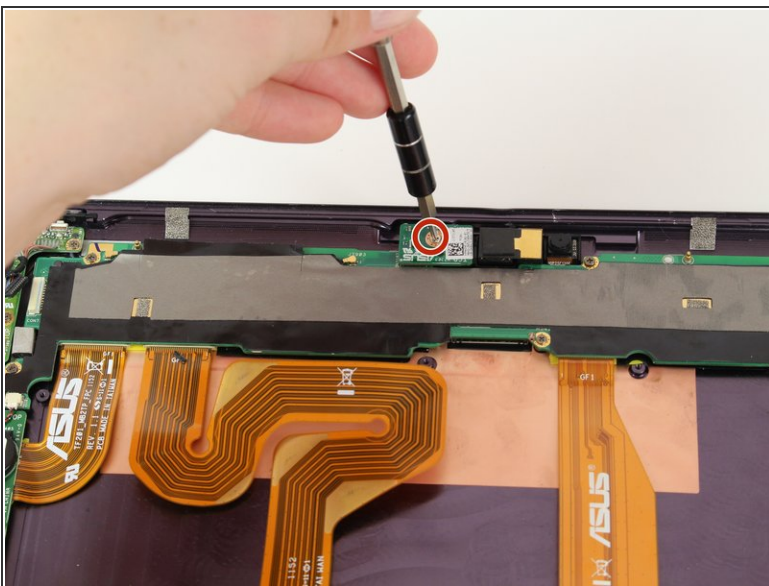
- Place a plastic opening tool under the black plastic tab on one of the ribbon cable ports.
- Pry upward until the black tab moves 90 degrees, and gently pull the ribbon cable out of the port.
- Repeat the previous process to remove the other ribbon cable.

Step 6



- Remove the battery (secured by six screws and a white wire connector) by following the removal portion of [this battery replacement guide](#).
- ⓘ The device that we wrote this guide for did not come with a battery, so we cannot include it in our own guide steps.
- ⓘ The battery is removed during all repairs to protect against short circuits, shocks, and internal damage to the device.

Step 7 — LED Chip



- With a Phillips #00 screwdriver, remove the one 3.8 mm screw in the LED chip. The LED chip is a small green chip (about 1 square centimeter) located at the top center of the device.
- Gently remove the chip with a pair of precision tweezers by grabbing the chip from one side, being careful not to pinch on a black piece of hardware on the chip.

To reassemble your device, follow these instructions in reverse order.