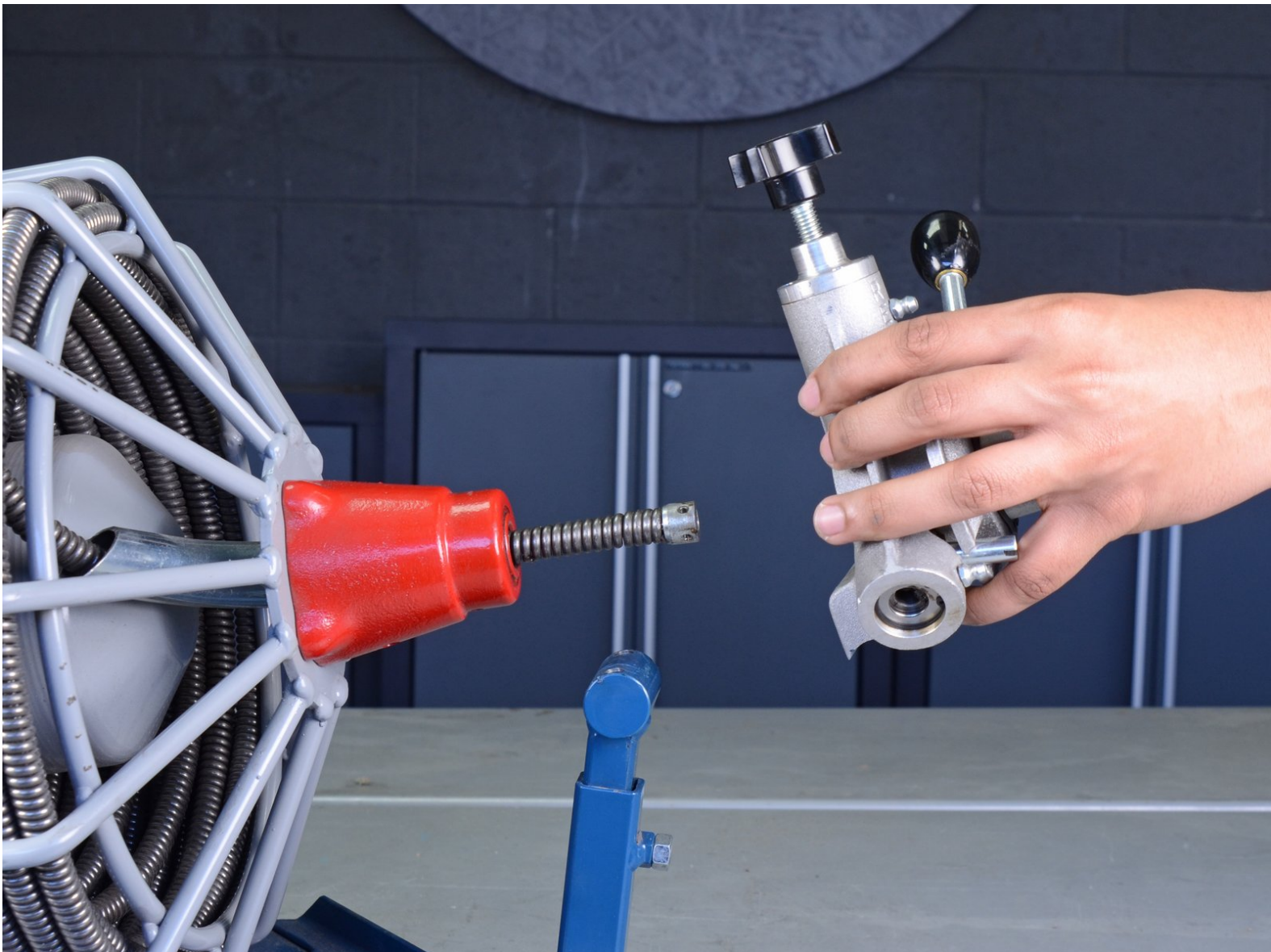




# Electric Eel Drain Cleaner Auto-Feeder Replacement

How to remove the auto-feeder from your Electric Eel Drain Cleaner Z5K12IC75AF for replacement or further disassembly.

Written By: Tarun Thiruma



## INTRODUCTION

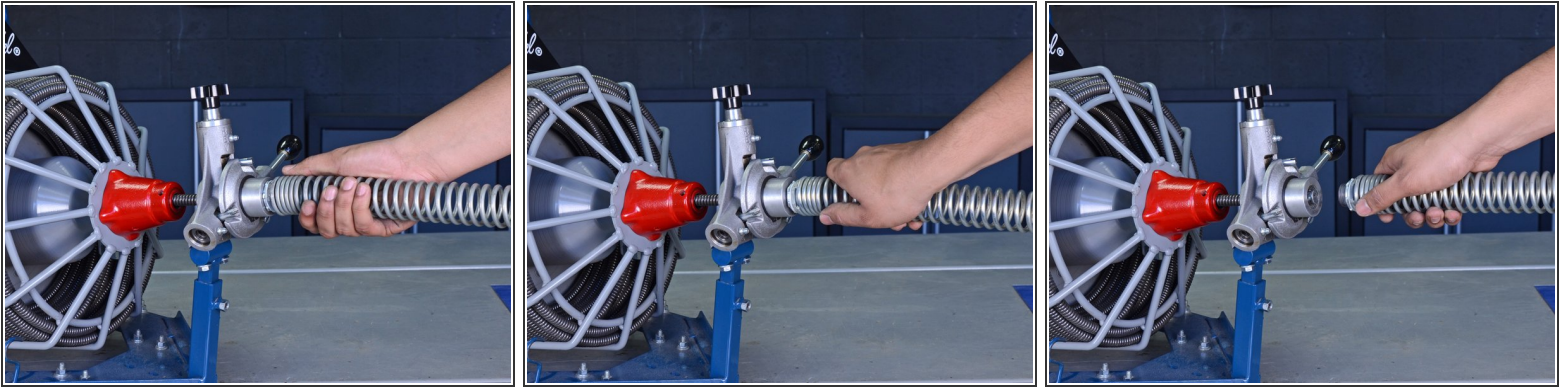
Follow this guide to remove the Auto-Feed mechanism from your Electric Eel 75' Drain Cleaner Z5K12IC75AF for replacement or further disassembly.





### TOOLS:

- [Work Gloves](#) (1)
  - [1/2" Wrench](#) (1)
-

## Step 1 — Remove the Guide Spring



 Unplug your drain cleaner before starting this guide. Because this device may have been used in a septic setting, it should be cleaned and disinfected as much as possible before disassembly.

 Wear gloves to protect your hands from injury when handling the cable.

 Ensure the cable is completely retracted into the auto-feeder.

- Twist the guide spring counter-clockwise to unscrew it from the auto-feeder.
- Remove the guide spring.

## Step 2 — Release the Tension Spring



- Unscrew the tension knob to loosen the tension spring in the top feeder assembly.

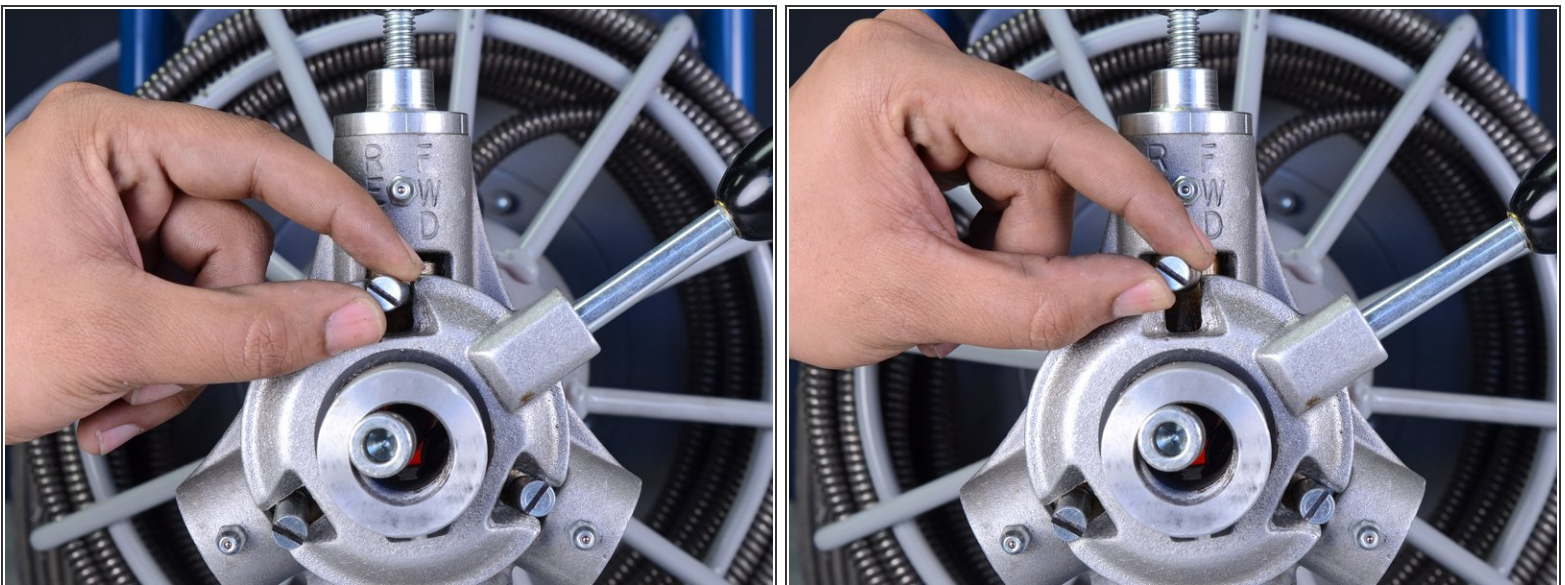


### Step 3 — Set the Feeder in Neutral Position



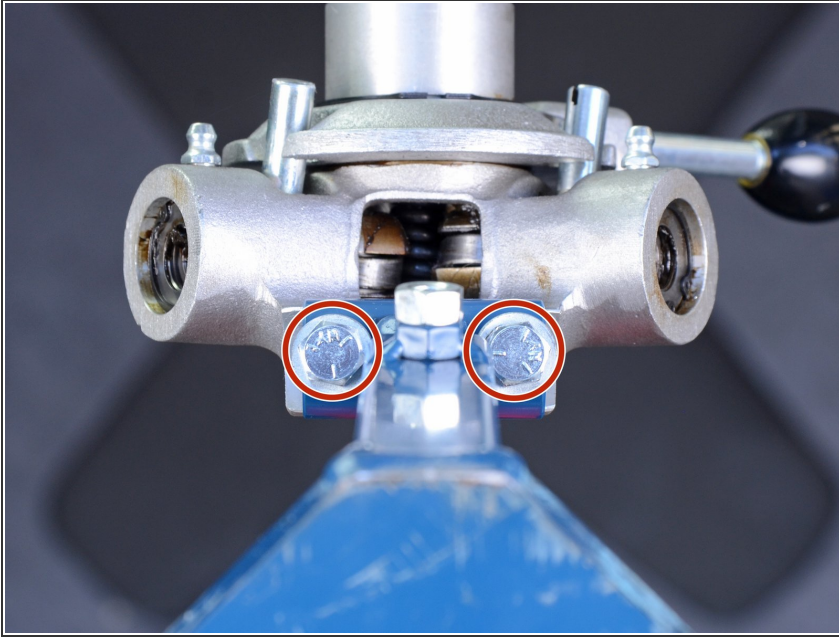
- Set the feeder adjustment knob in the neutral position, in between the "FWD" and "REV" positions.

### Step 4 — Disengage the Top Bearing



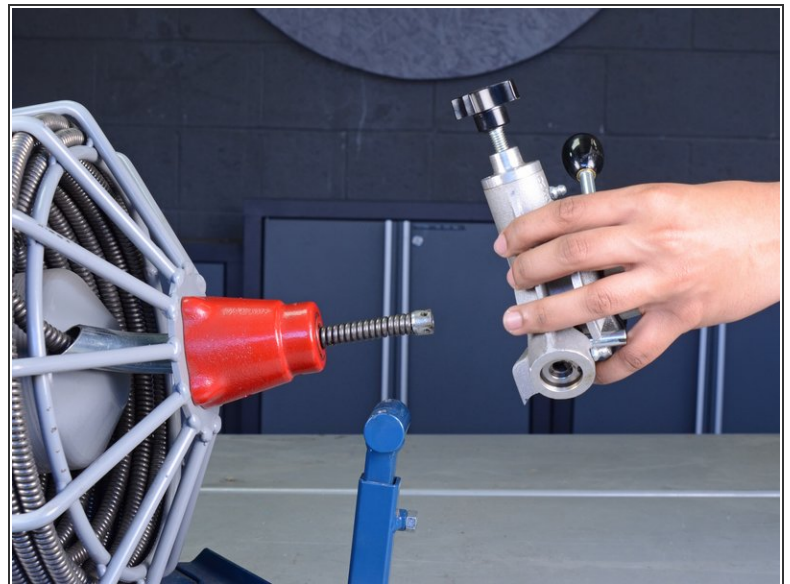
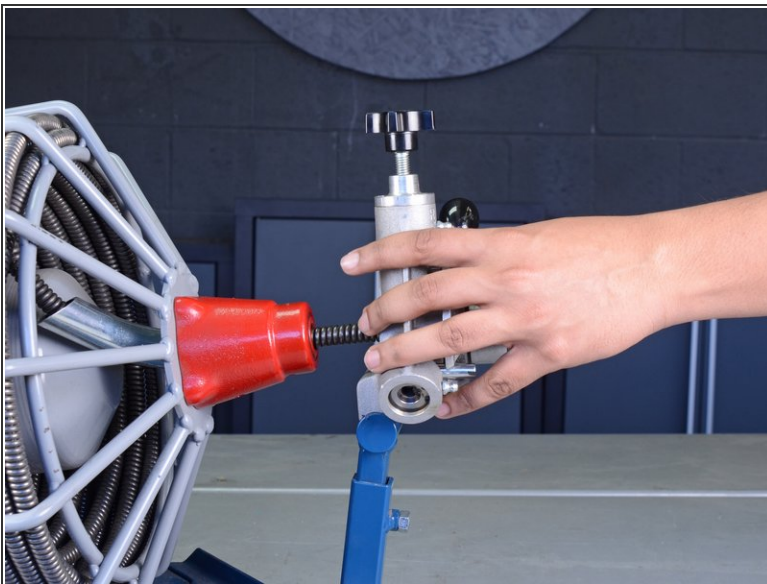
- Push the top control finger up as far as possible.
  - ⓘ This disengages the top feeder assembly and allows the cable to freely move through the feeder. The finger may fall back down on its own and restrict cable movement. If this occurs, simply push the finger back up.

## Step 5 — Remove the Auto-Feeder



- Use a 1/2" open-ended wrench to remove the two bolts from the bottom of the feeder body mounting arm.

## Step 6



- Remove the auto-feeder from the cable.
  - ❗ If the end of the cable won't pass through the feeder, ensure that the top bearing is completely disengaged as described in step 4 of this guide.

To reassemble your device, follow these instructions in reverse order.