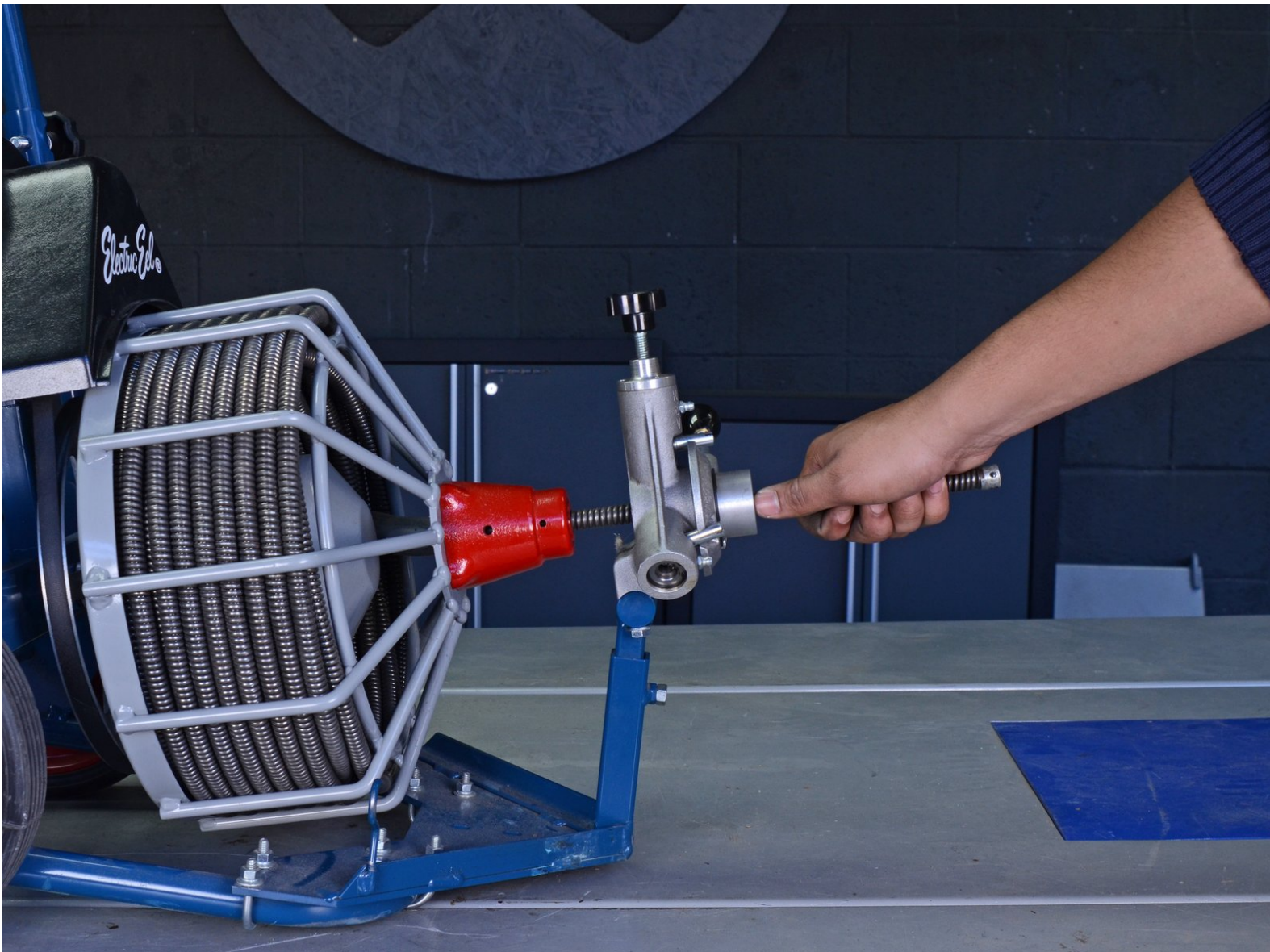




Electric Eel Drain Cleaner Cable Replacement

How to replace or remove the 75' cable on your Electric Eel 75' Drain Cleaner Z5K12IC75AF.

Written By: Tarun Thiruma



INTRODUCTION

Follow this guide to replace or remove the 75' cable on your Electric Eel 75' Drain Cleaner Z5K12IC75AF.



TOOLS:

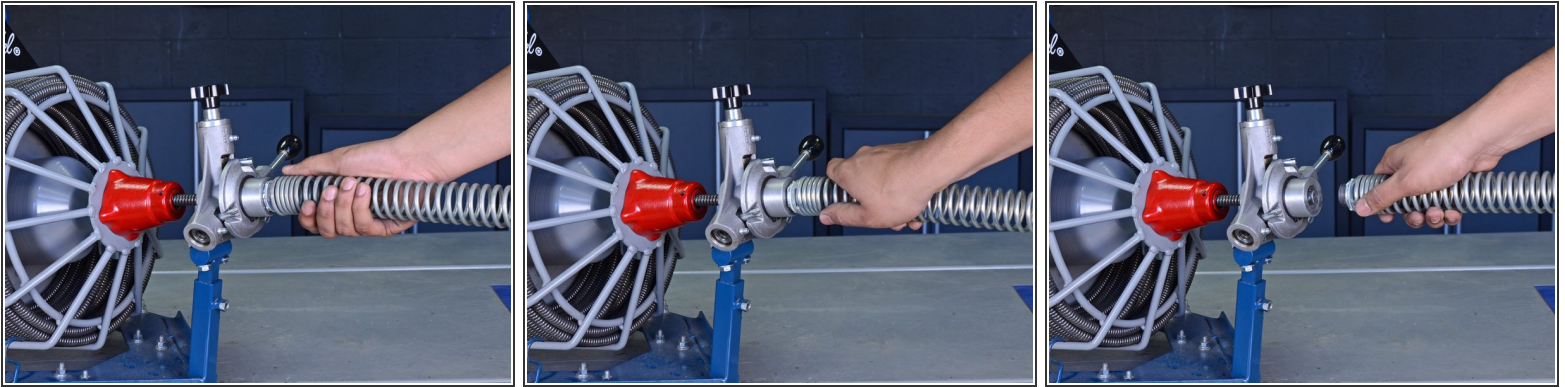
- [Work Gloves](#) (1)
- [Flathead Screwdriver](#) (1)
- [1/8" Hex Key](#) (1)




PARTS:

- [Electric Eel 1/2" X 75' Inner Core Cable 1/2IC75](#) (1)

Step 1 — Remove the Guide Spring



 Unplug your drain cleaner before starting this guide. Because this device may have been used in a septic setting, it should be cleaned and disinfected as much as possible before disassembly.

 Wear gloves to protect your hands from injury when handling the cable.

 Ensure the cable is completely retracted into the auto-feeder.

- Twist the guide spring counter-clockwise to unscrew it from the auto-feeder.
- Remove the guide spring.

Step 2 — Release the Tension Spring



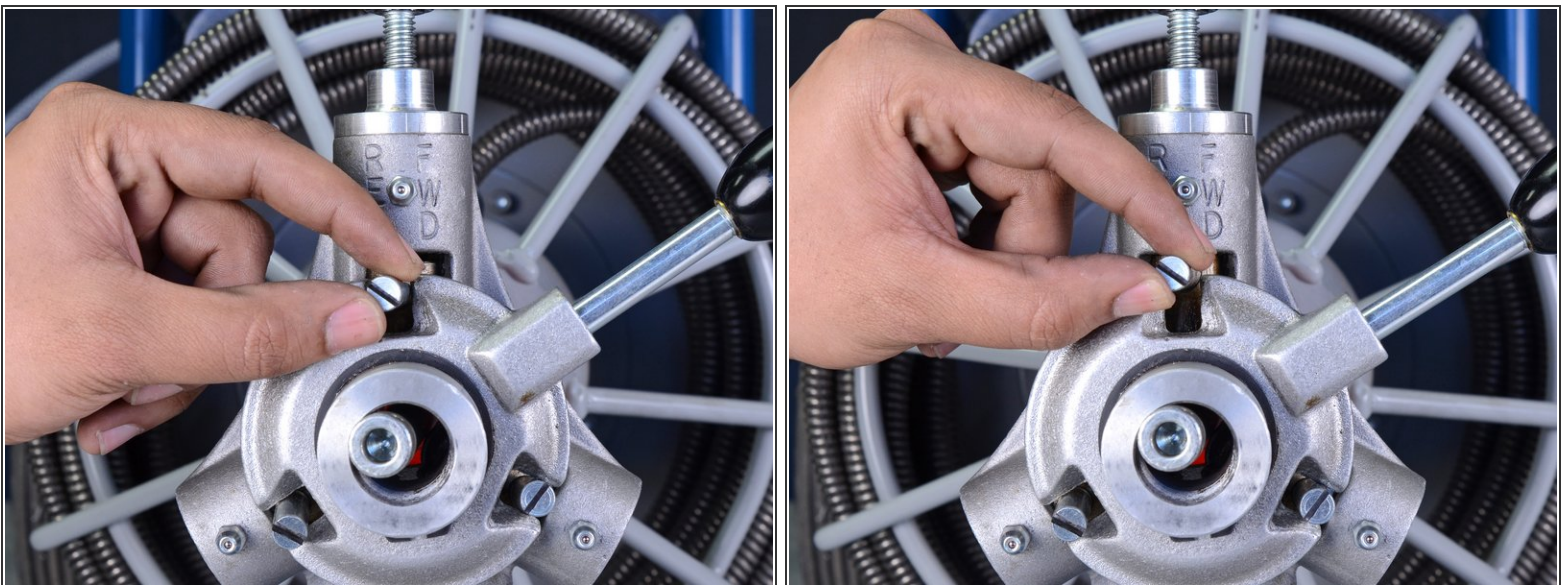
- Unscrew the tension knob to loosen the tension spring in the top feeder assembly.

Step 3 — Set the Feeder in Neutral Position



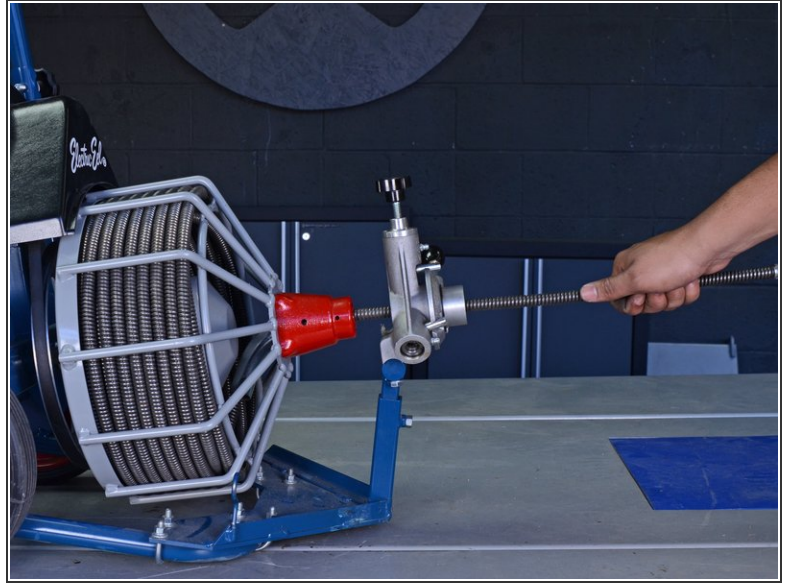
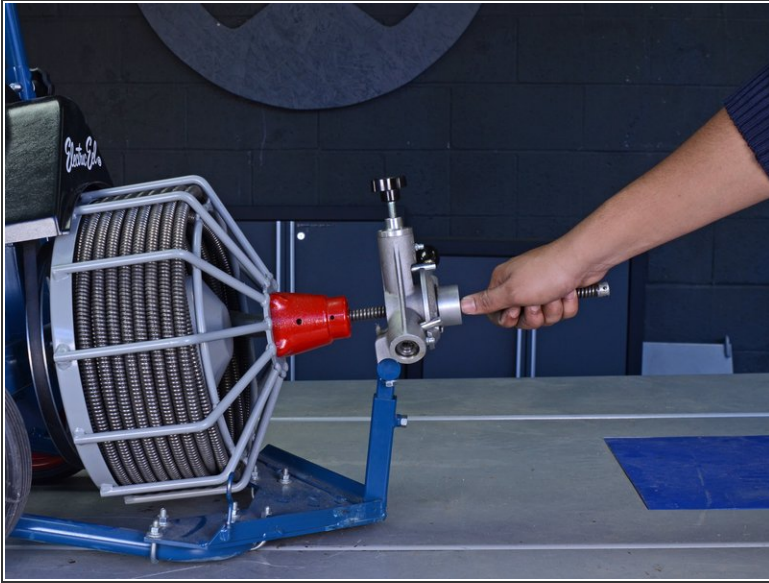
- Set the feeder adjustment knob in the neutral position, in between the "FWD" and "REV" positions.

Step 4 — Disengage the Top Bearing



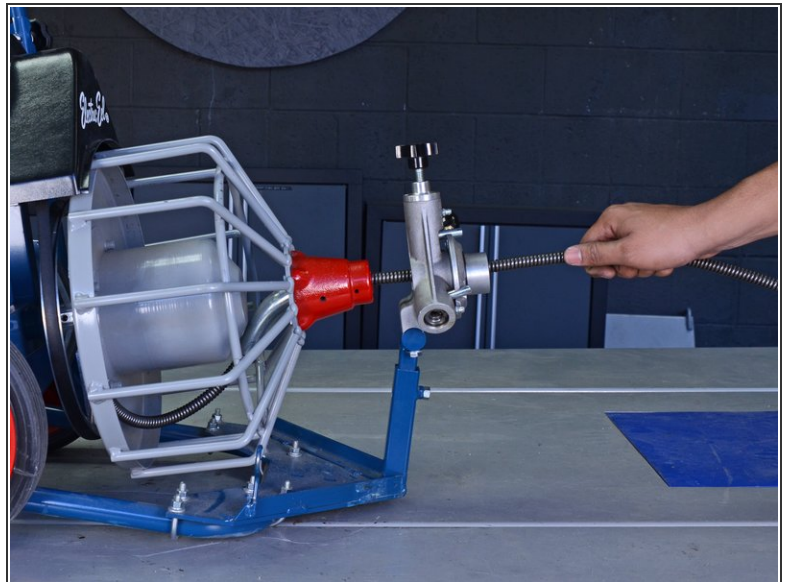
- Push the top control finger up as far as possible.
 - ⓘ This disengages the top feeder assembly and allows the cable to freely move through the feeder. The finger may fall back down on its own and restrict cable movement. If this occurs, simply push the finger back up.

Step 5 — Uncoil the Cable



- Grab the end of the cable and pull to begin removing the cable from the drum.
- ⓘ If the the cable won't pass through the feeder, ensure that the top bearing is completely disengaged as described in [step 4](#) of this guide.

Step 6



- Continue pulling out the cable until it reaches the end. The very end of the cable and the cable anchor will still be attached to the back side of the drum.

Step 7 — Remove the Cable Anchor



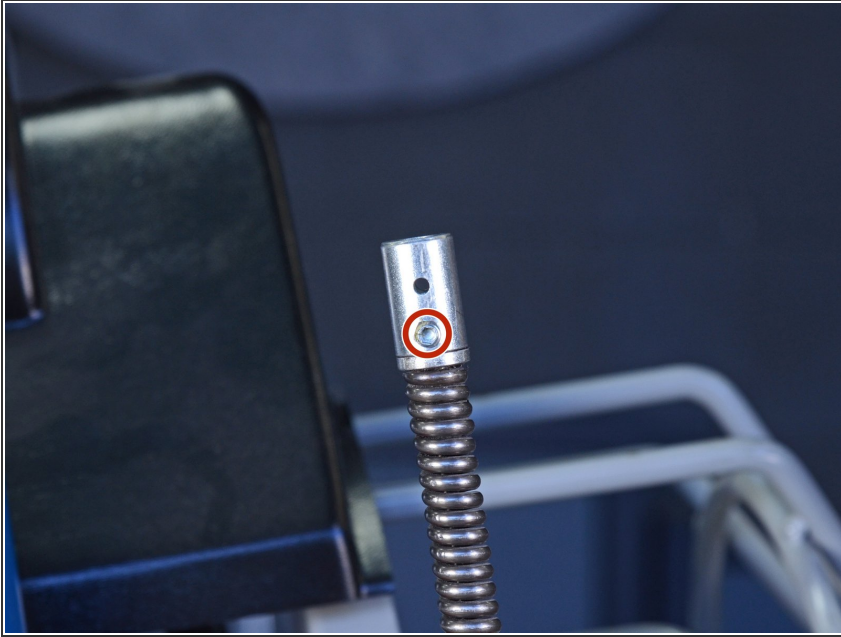
- Use a flat-head screwdriver to remove the screw on the rear face of the drum that secures the cable anchor.
- ⓘ You may need to rotate the drum so that the screw is accessible from bottom rear of the drain cleaner.
- ★ During reassembly, twist the cable so that the [threaded hole](#) in the cable anchor is facing the back side of the drum.

Step 8



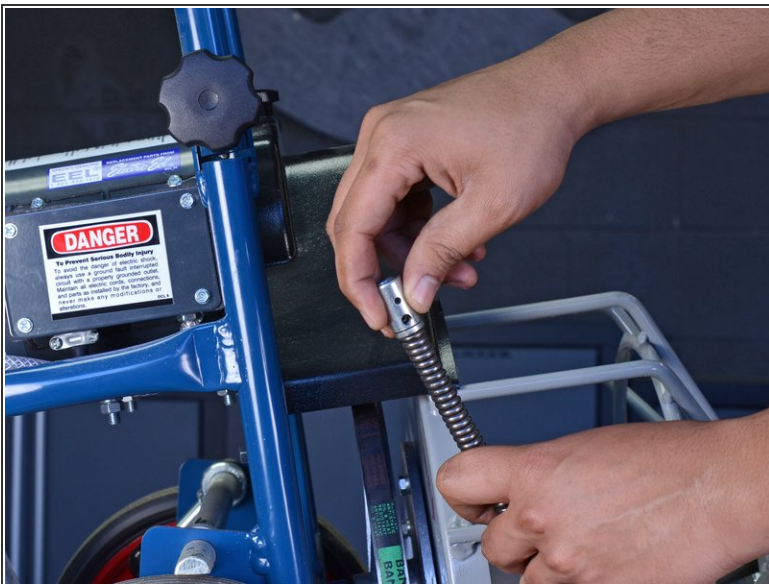
- Pull the end of the cable out of the side of the drum to access the cable anchor.

Step 9



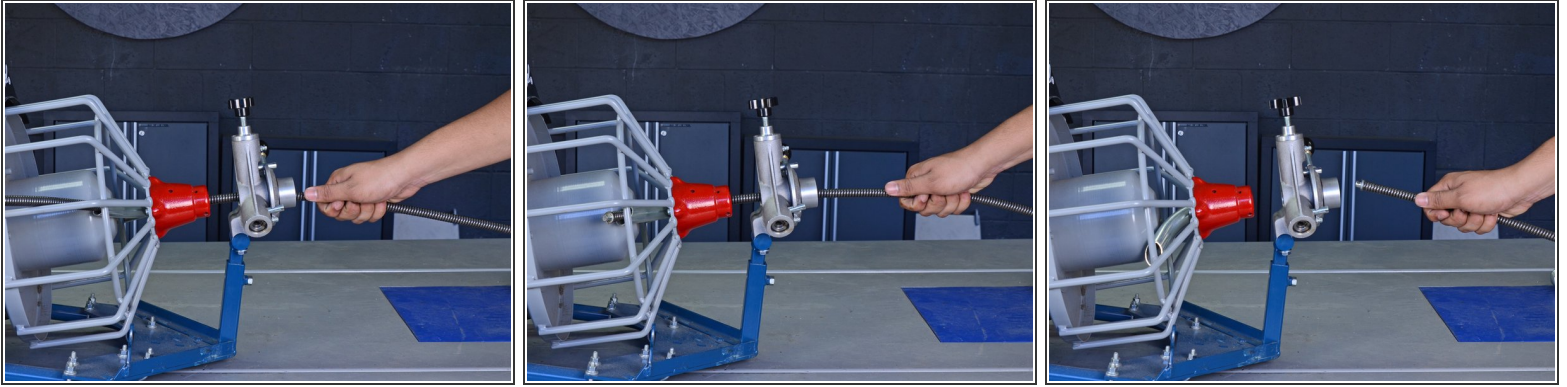
- Use a 1/8" hex key to remove the grub screw from the cable anchor.

Step 10



- Remove the cable anchor from the cable.

Step 11 — Remove the Cable



- Pull the rest of the cable out of the drum through the auto-feeder to remove it.

To reassemble your device, follow these instructions in reverse order.