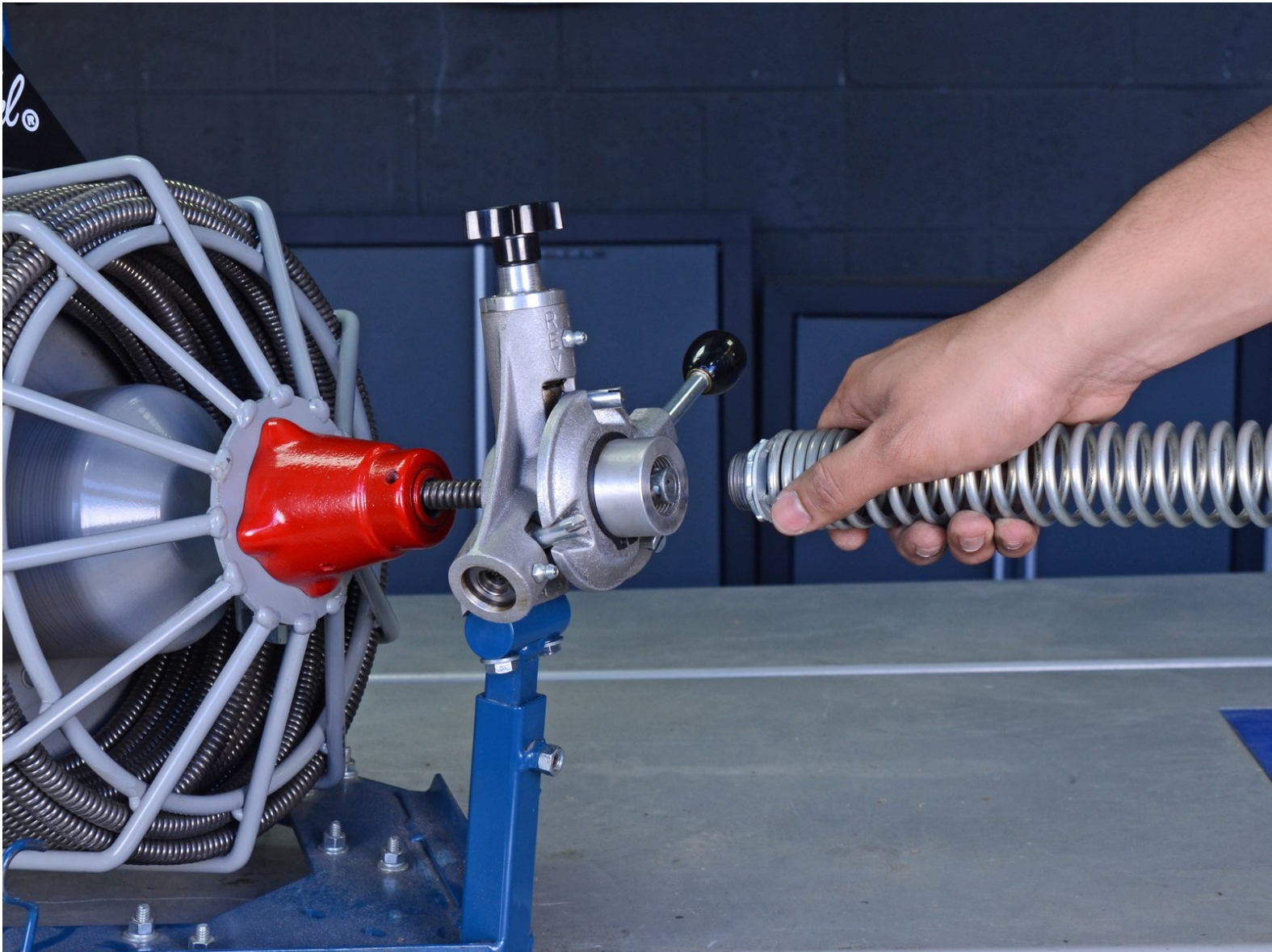




Electric Eel Drain Cleaner Guide Spring Replacement

How to replace or remove the guide spring on your Electric Eel 75' Drain Cleaner Z5K12IC75AF.

Written By: Tarun Thiruma



INTRODUCTION

Follow this guide to replace the guide spring on your Electric Eel 75' Drain Cleaner Z5K12IC75AF.



TOOLS:

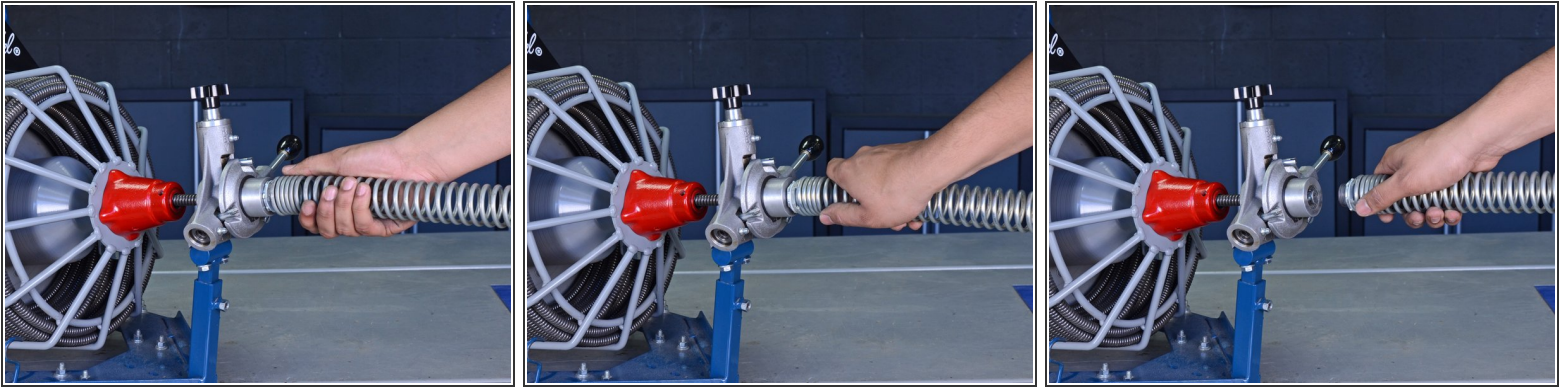
- [Work Gloves](#) (1)






PARTS:

- [Electriceel Guide Spring Assembly EZ-GTA](#) (1)

Step 1 — Remove the Guide Spring



 Unplug your drain cleaner before starting this guide. Because this device may have been used in a septic setting, it should be cleaned and disinfected as much as possible before disassembly.

-  Wear gloves to protect your hands from injury when handling the cable.
-  Ensure the cable is completely retracted into the auto-feeder.
 - Twist the guide spring counter-clockwise to unscrew it from the auto-feeder.
 - Remove the guide spring.

To reassemble your device, follow these instructions in reverse order.