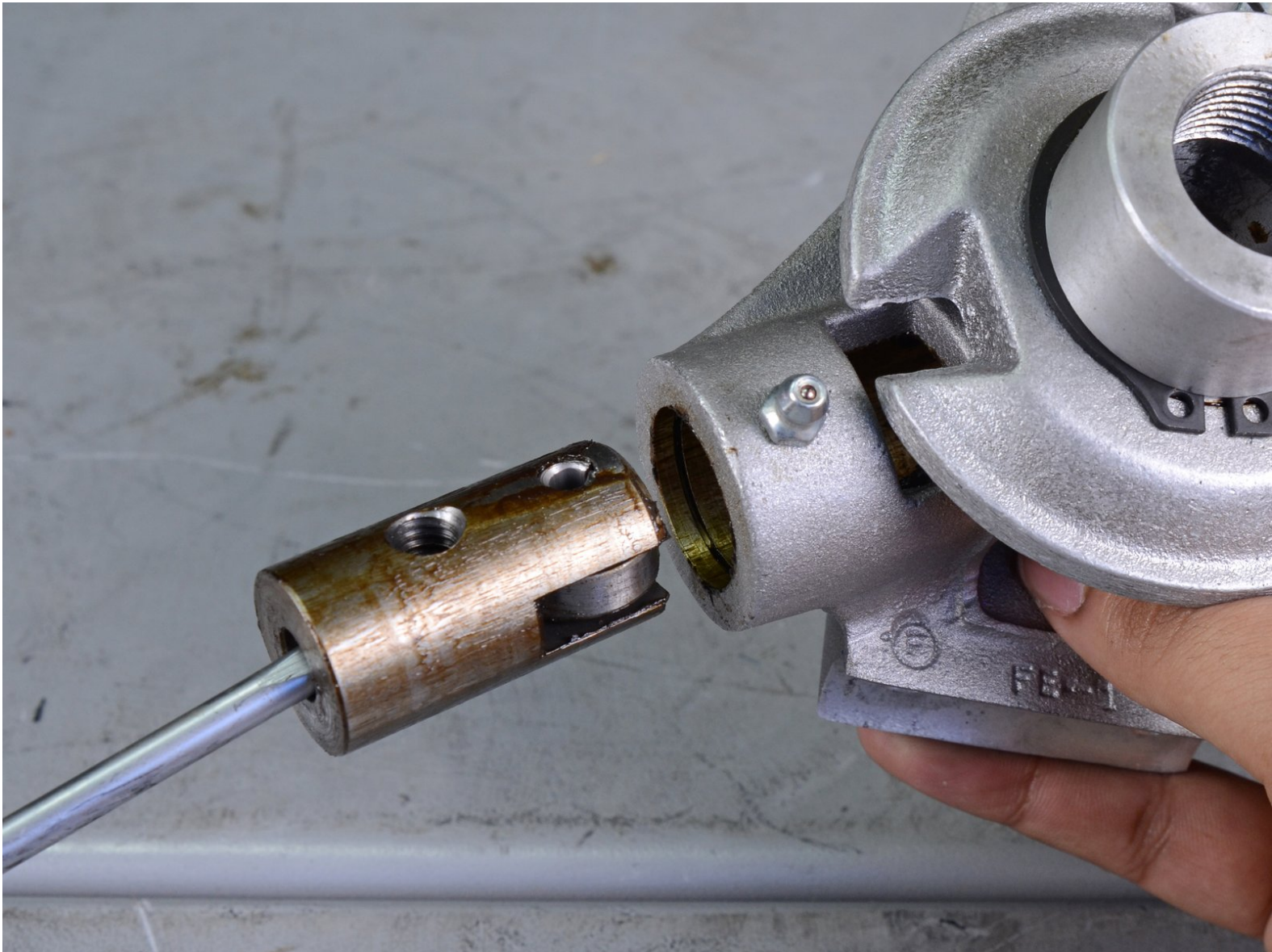




# Electric Eel Lower Feeder Assembly Replacement

How to replace the lower feeder assembly in the Electric Eel Drain Cleaner Z5K12IC75AF.

Written By: Tarun Thiruma



## INTRODUCTION

This guide demonstrates how to remove or replace the **left** lower feeder assembly in the auto-feeder on your Electric Eel 75' Drain Cleaner Z5K12IC75AF.

If you need to remove or replace the right lower feeder assembly, simply perform steps 12-17 on the opposite side of the feeder body.



### TOOLS:

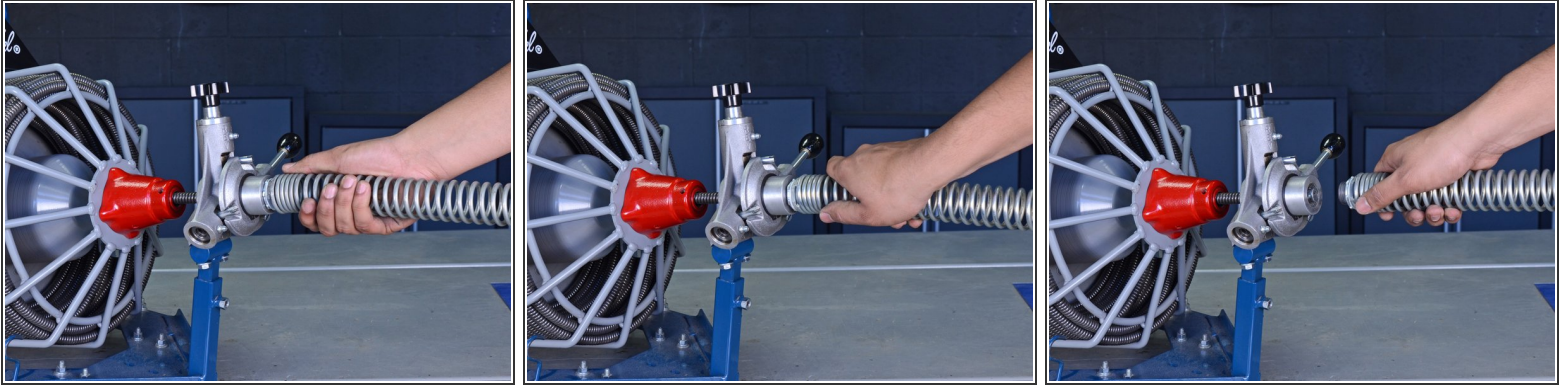
- [Work Gloves](#) (1)
- [Shop Towels or Rags](#) (1)
- [1/2" Wrench](#) (1)
- [Large Vise](#) (1)
- [5/16" roll pin punch](#) (1)
- [Mallet](#) (1)
- [Snap Ring Pliers](#) (1)
- [Small Needle Nose Pliers](#) (1)
- [Flathead Screwdriver](#) (1)






### PARTS:

- [Electriceel Insert Lower Feeder FE-8](#) (1)
- [Electric Eel Roll Pin RP516138](#) (1)
- [Electriceel Bearing Feeder FE-7](#) (1)
- [Electriceel Spacer C145181](#) (1)
- [Electric Eel Fingers Feeder Control DE-12](#) (1)
- [Electriceel Retaining Ring RR100](#) (1)

## Step 1 — Remove the Guide Spring



 Unplug your drain cleaner before starting this guide. Because this device may have been used in a septic setting, it should be cleaned and disinfected as much as possible before disassembly.

-  Wear gloves to protect your hands from injury when handling the cable.
-  Ensure the cable is completely retracted into the auto-feeder.
  - Twist the guide spring counter-clockwise to unscrew it from the auto-feeder.
  - Remove the guide spring.

## Step 2 — Release the Tension Spring



- Unscrew the tension knob to loosen the tension spring in the top feeder assembly.

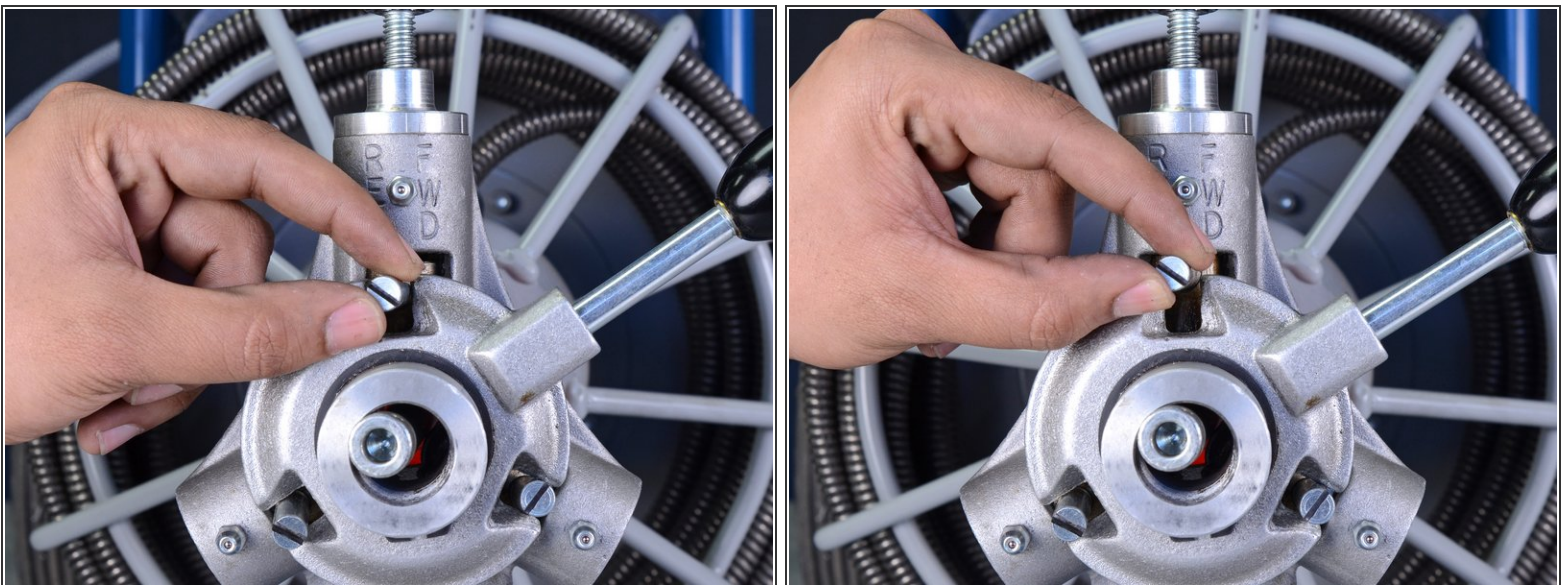


### Step 3 — Set the Feeder in Neutral Position



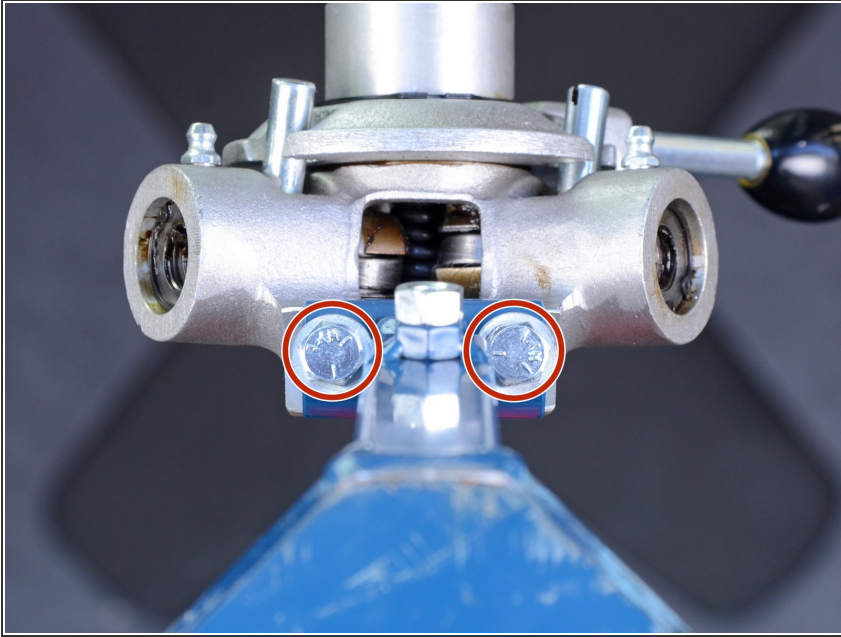
- Set the feeder adjustment knob in the neutral position, in between the "FWD" and "REV" positions.

### Step 4 — Disengage the Top Bearing



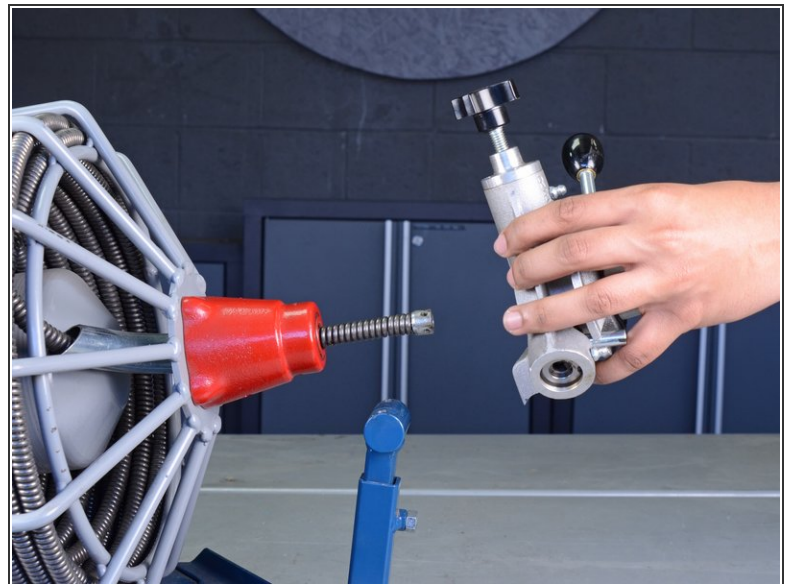
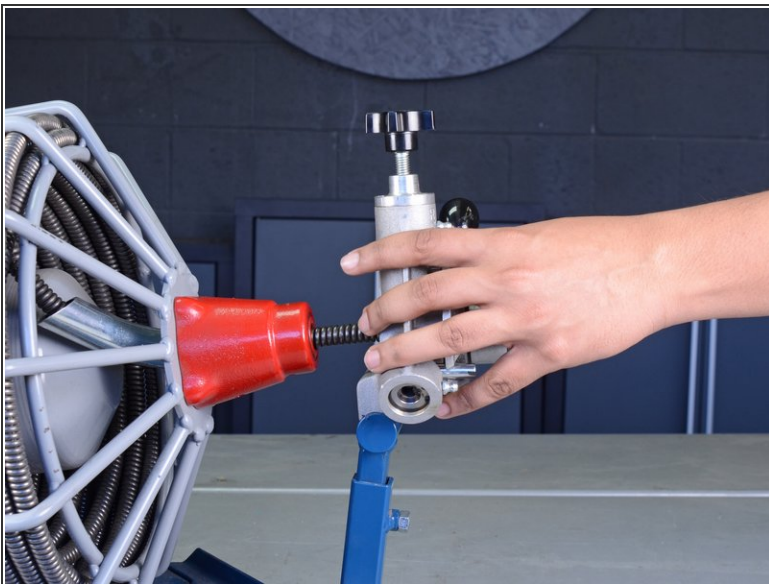
- Push the top control finger up as far as possible.
- ⓘ This disengages the top feeder assembly and allows the cable to freely move through the feeder. The finger may fall back down on its own and restrict cable movement. If this occurs, simply push the finger back up.

## Step 5 — Remove the Auto-Feeder



- Use a 1/2" open-ended wrench to remove the two bolts from the bottom of the feeder body mounting arm.

## Step 6



- Remove the auto-feeder from the cable.
  - ❗ If the end of the cable won't pass through the feeder, ensure that the top bearing is completely disengaged as described in step 4 of this guide.

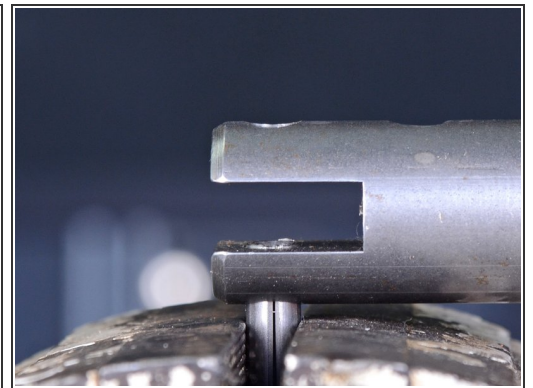


## Step 7 — Install the Roll Pin



- Use a vise to compress the roll pin until there is no longer space in the roll pin's slot.

## Step 8



- Use a dead blow hammer or mallet to tap down the bearing carrier onto the roll pin until the pin just begins to peek into the bearing channel.
- ⓘ Ensure you are using the correct bearing carrier for this step. The top bearing assembly uses the shorter carrier, while the two lower bearing assemblies use the longer carrier.

## Step 9



- Insert a bearing and the bearing spacer into the bearing channel.
- ⓘ Ensure that the bearing and spacer are aligned with the roll pin and hole in the bearing carrier.

## Step 10



- Continue to tap down the bearing carrier until the bearing and spacer are fully secured around the roll pin.
- ⓘ You will need to unclamp and reposition the roll pin upwards to continue tapping it into the bearing carrier. Do this as many times as is necessary to sufficiently support the roll pin.

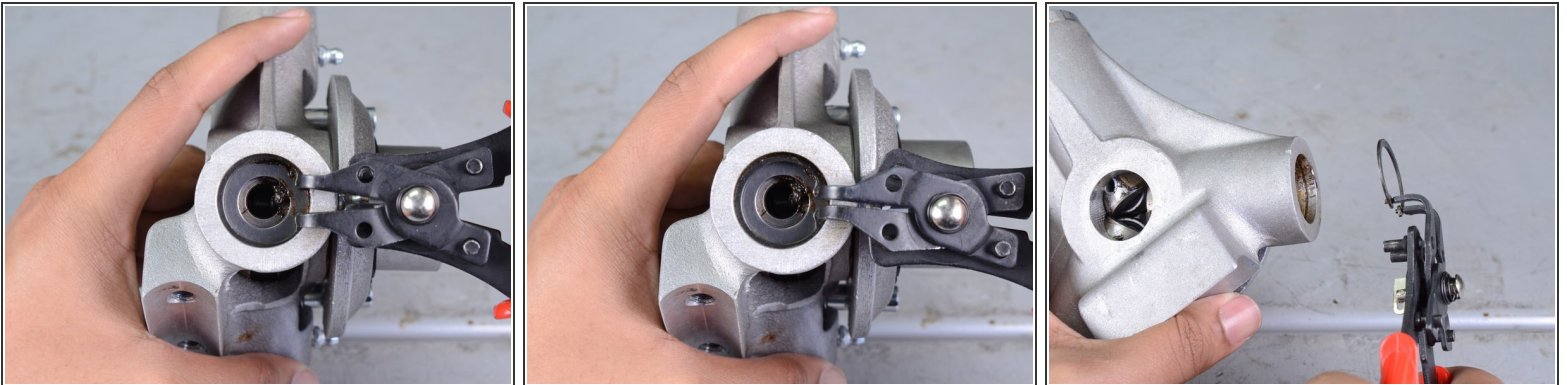


## Step 11



- Use a roll pin punch to finish seating the roll pin into place.
- ⓘ Place a piece of cloth or mat on top of the vise below the bearing carrier to prevent marring the outer surface of the bearing carrier.
- ⚠ Before moving to the next step, ensure the roll pin is fully seated and completely within the bearing carrier. A slightly exposed roll pin may damage the inside of your feeder body when the bearing carrier assembly is being installed.

## Step 12 — Remove the Retaining Ring



- Use a pair of snap ring pliers to remove the retaining ring at the bottom of the lower feeder assembly.



## Step 13 — Remove the Thrust Bearings



- Use a pair of needle-nose pliers to remove the first thrust washer from the assembly.

## Step 14



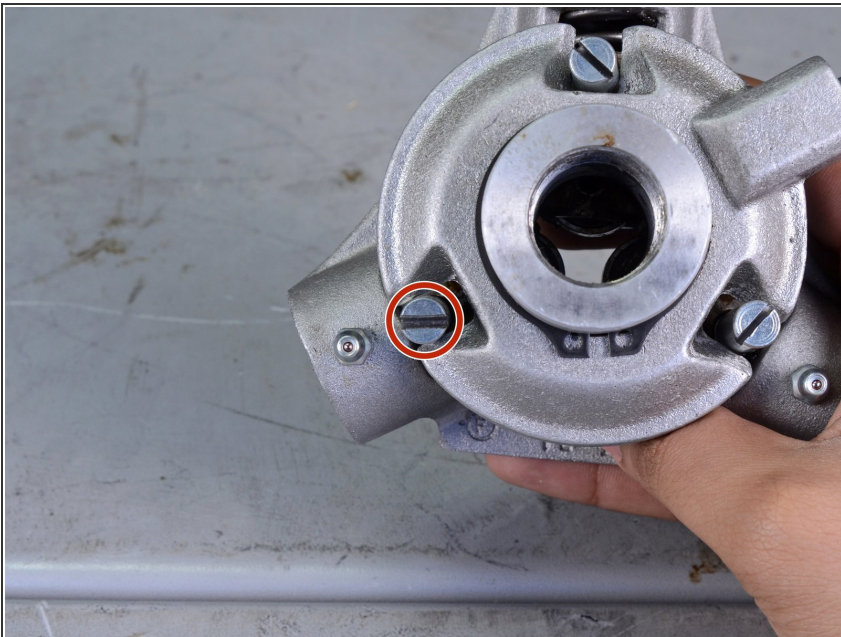
- Remove the thrust bearing from the assembly.

## Step 15



- Remove the second thrust washer from the assembly.

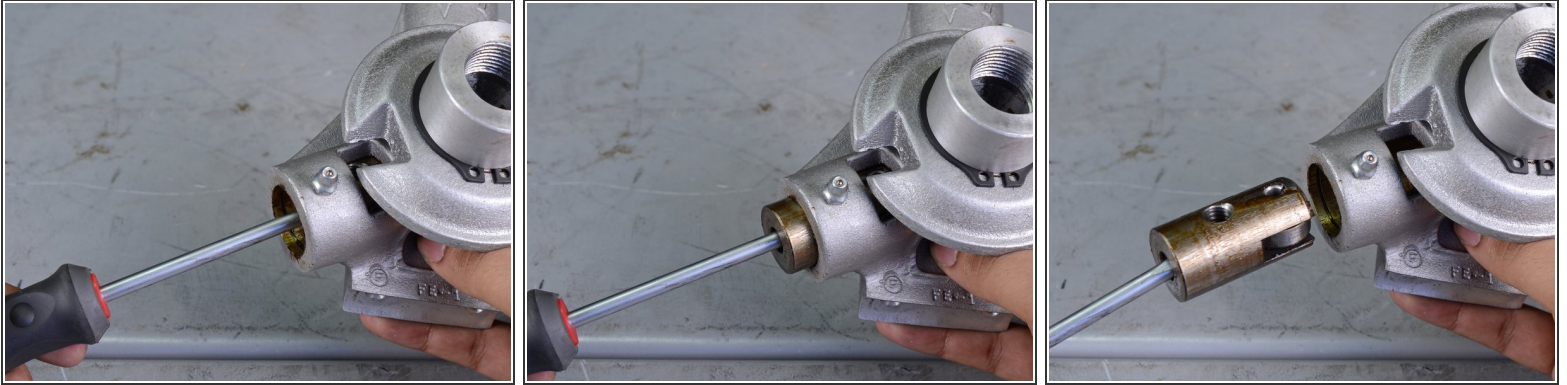
## Step 16 — Remove the Control Finger



- Use a flathead screwdriver to remove the lower control finger from the assembly.



## Step 17 — Remove the Bearing Carrier Assembly



- Use a flathead screwdriver or other long tool as leverage to remove the lower bearing carrier from the assembly.

**To reassemble your device, follow these instructions in reverse order.**

**After reassembly:** Ensure the assembly you just installed is sufficiently lubricated using the Zerk fitting on the feeder body.