



Electric Eel Top Feeder Assembly Replacement

How to replace the top feeder assembly in the Electric Eel Drain Cleaner Z5K12IC75AF.

Written By: Tarun Thiruma



INTRODUCTION

Use this guide to replace the top feeder assembly in the auto-feeder in your Electric Eel 75' Drain Cleaner Z5K12IC75AF.



TOOLS:

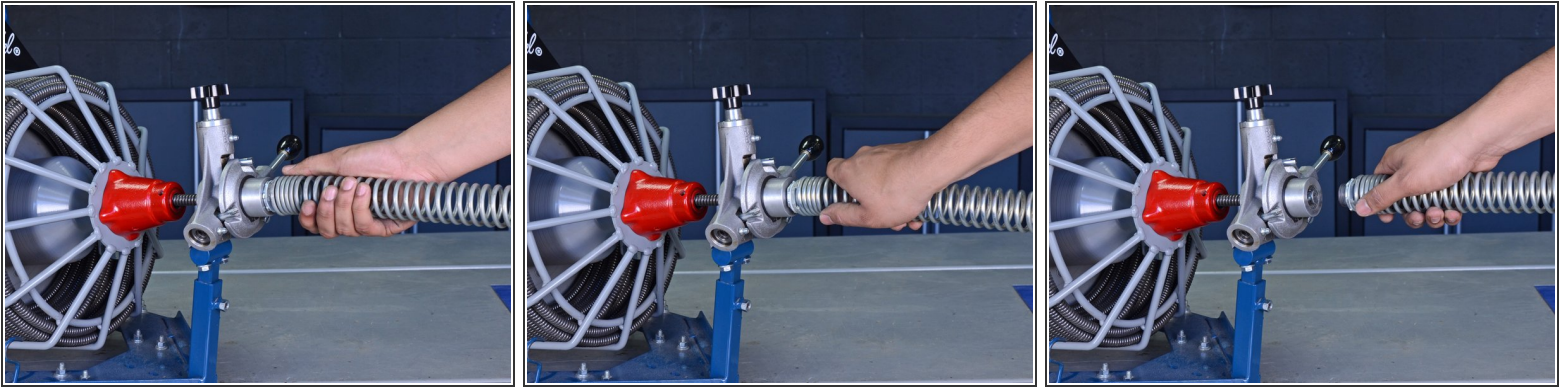
- [Work Gloves](#) (1)
- [Shop Towels or Rags](#) (1)
- [1/2" Wrench](#) (1)
- [Large Vise](#) (1)
- [5/16" roll pin punch](#) (1)
- [Mallet](#) (1)
- [9/64 Hex Key](#) (1)
- [Flathead Screwdriver](#) (1)





PARTS:

- [Electric Eel Roll Pin RP516138](#) (1)
- [Electriceel Bearing Feeder FE-7](#) (1)
- [Electriceel Spacer C145181](#) (1)
- [Electriceel Insert Top Feeder FE-6](#) (1)
- [Electric Eel Ball Bearing BB38](#) (1)
- [Electric Eel Fingers Feeder Control DE-12](#) (1)
- [Electric Eel Ball Bearing Retainer DE-8](#) (1)
- [Electriceel Spring Tension FE-5](#) (1)

Step 1 — Remove the Guide Spring



 Unplug your drain cleaner before starting this guide. Because this device may have been used in a septic setting, it should be cleaned and disinfected as much as possible before disassembly.

 Wear gloves to protect your hands from injury when handling the cable.

 Ensure the cable is completely retracted into the auto-feeder.

- Twist the guide spring counter-clockwise to unscrew it from the auto-feeder.
- Remove the guide spring.

Step 2 — Release the Tension Spring



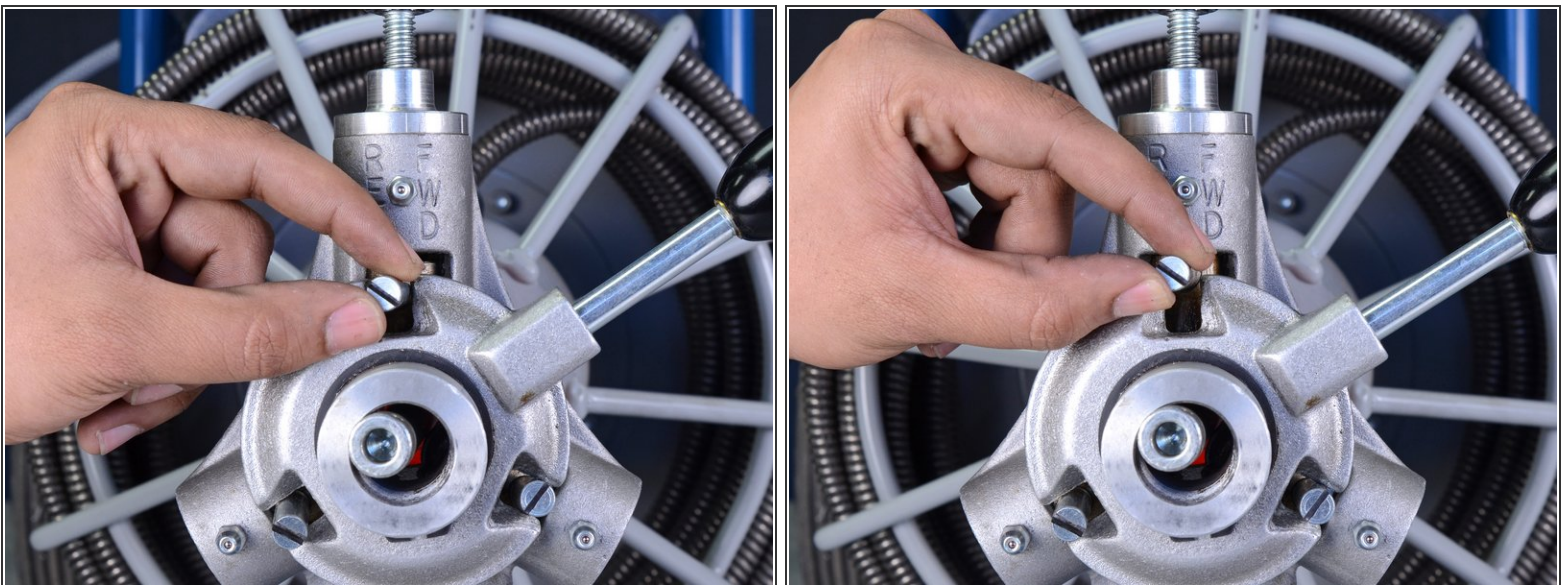
- Unscrew the tension knob to loosen the tension spring in the top feeder assembly.

Step 3 — Set the Feeder in Neutral Position



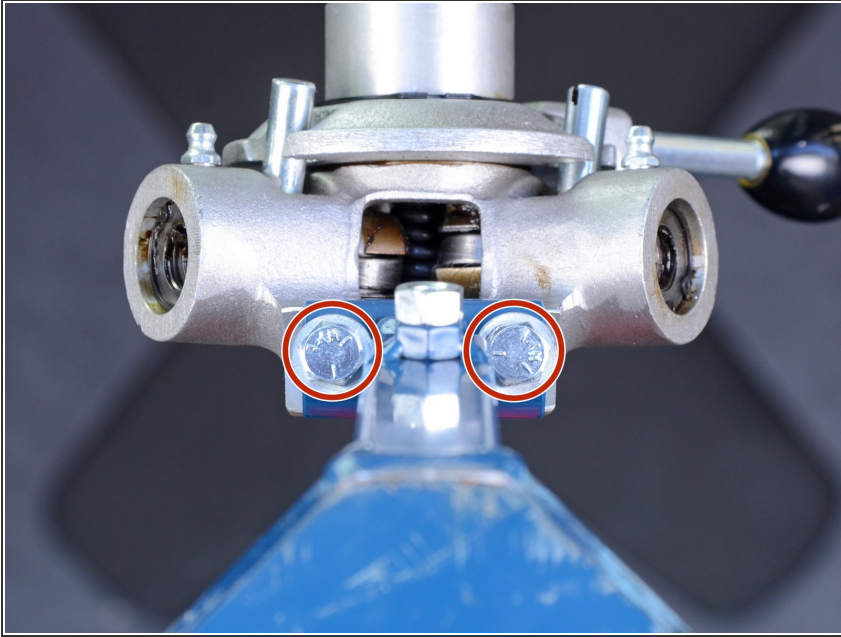
- Set the feeder adjustment knob in the neutral position, in between the "FWD" and "REV" positions.

Step 4 — Disengage the Top Bearing



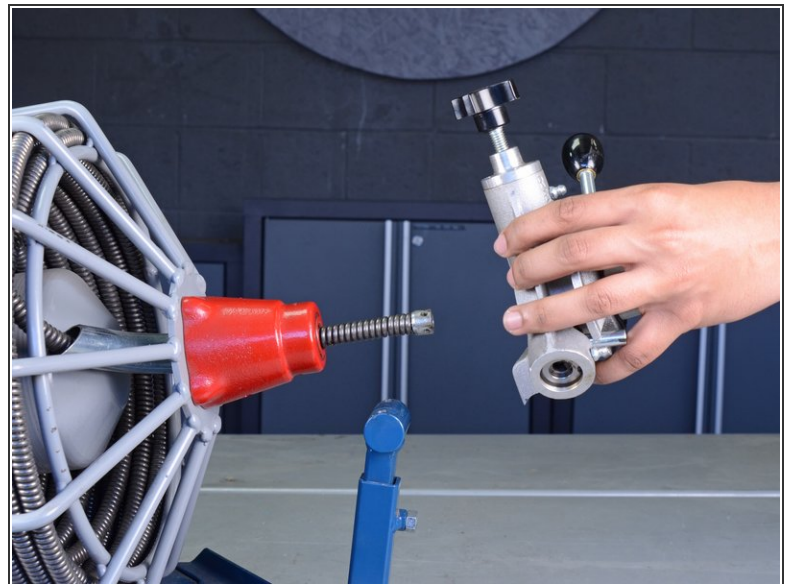
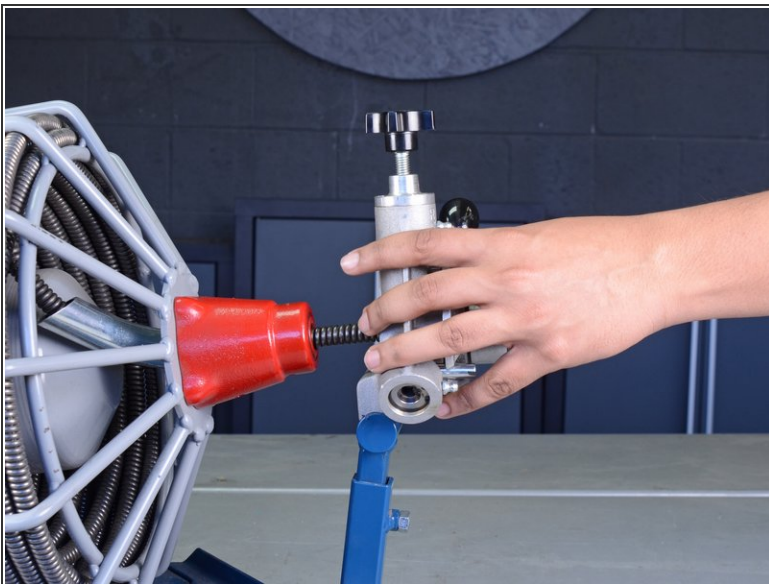
- Push the top control finger up as far as possible.
 - ⓘ This disengages the top feeder assembly and allows the cable to freely move through the feeder. The finger may fall back down on its own and restrict cable movement. If this occurs, simply push the finger back up.

Step 5 — Remove the Auto-Feeder



- Use a 1/2" open-ended wrench to remove the two bolts from the bottom of the feeder body mounting arm.

Step 6



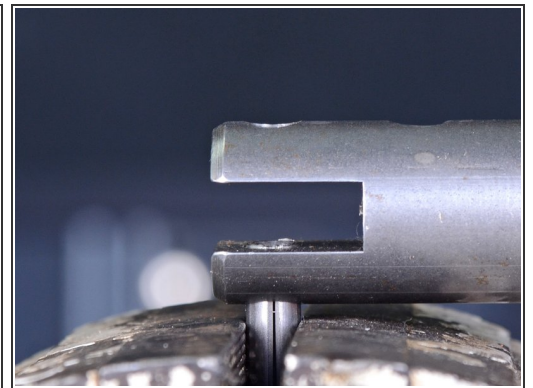
- Remove the auto-feeder from the cable.
 - ❗ If the end of the cable won't pass through the feeder, ensure that the top bearing is completely disengaged as described in step 4 of this guide.

Step 7 — Install the Roll Pin



- Use a vise to compress the roll pin until there is no longer space in the roll pin's slot.

Step 8



- Use a dead blow hammer or mallet to tap down the bearing carrier onto the roll pin until the pin just begins to peek into the bearing channel.
- ⓘ Ensure you are using the correct bearing carrier for this step. The top bearing assembly uses the shorter carrier, while the two lower bearing assemblies use the longer carrier.

Step 9



- Insert a bearing and the bearing spacer into the bearing channel.
- ⓘ Ensure that the bearing and spacer are aligned with the roll pin and hole in the bearing carrier.

Step 10



- Continue to tap down the bearing carrier until the bearing and spacer are fully secured around the roll pin.
- ⓘ You will need to unclamp and reposition the roll pin upwards to continue tapping it into the bearing carrier. Do this as many times as is necessary to sufficiently support the roll pin.

Step 11



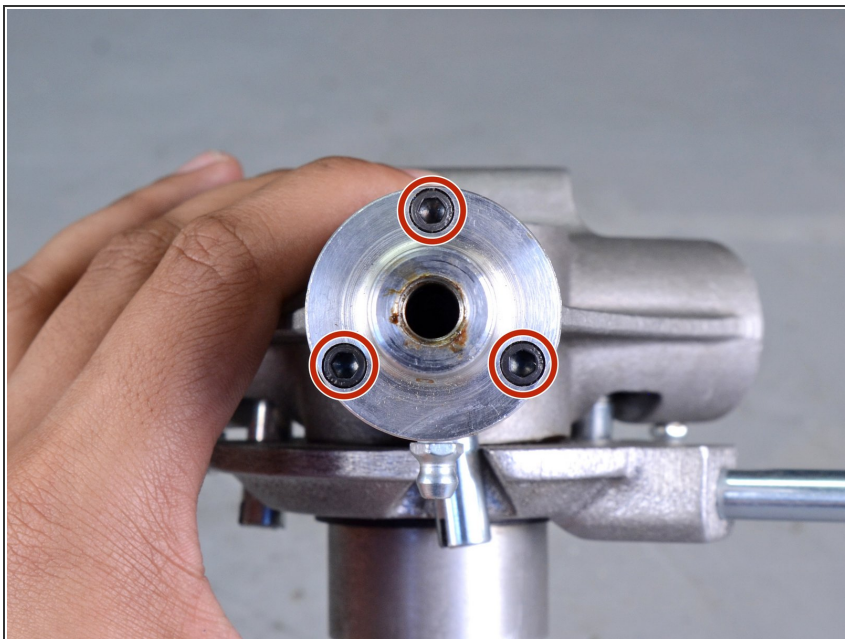
- Use a roll pin punch to finish seating the roll pin into place.
- ⓘ Place a piece of cloth or mat on top of the vise below the bearing carrier to prevent marring the outer surface of the bearing carrier.
- ⚠ Before moving to the next step, ensure the roll pin is fully seated and completely within the bearing carrier. A slightly exposed roll pin may damage the inside of your feeder body when the bearing carrier assembly is being installed.

Step 12 — Remove the Tension Knob



- Unscrew and remove the tension knob from the top feeder assembly.

Step 13 — Remove the feeder cap



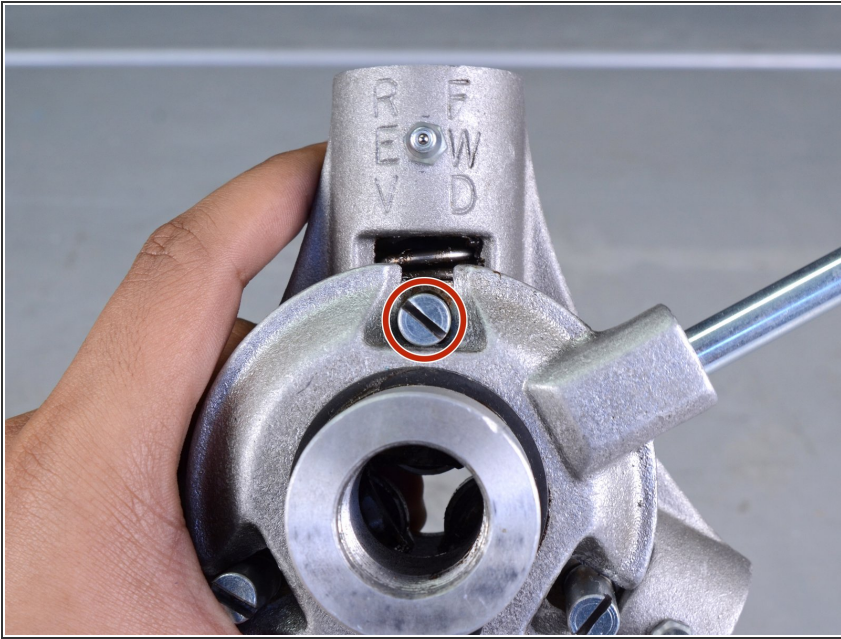
- Use a 9/64" hex key to remove the three bolts from the top of the feeder.

Step 14



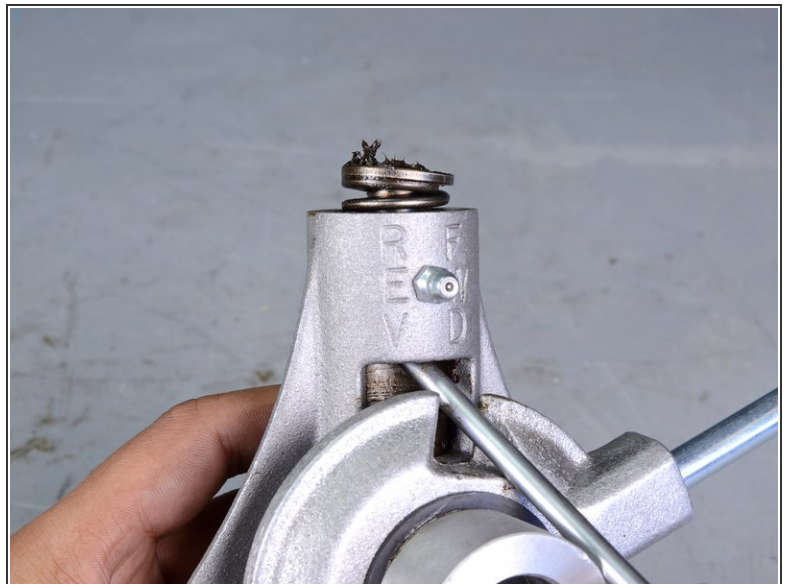
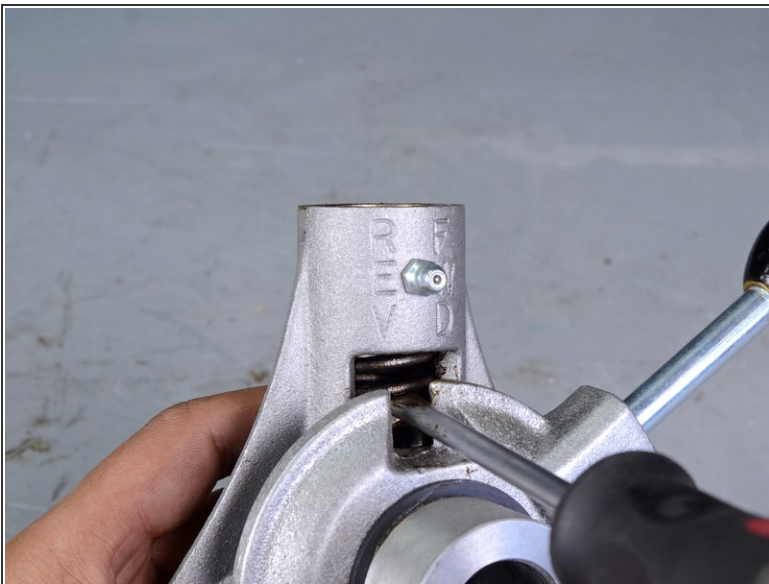
- Remove the top feeder assembly cap.

Step 15 — Remove the Control Finger



- Use a flat head screwdriver to remove the top control finger.

Step 16 — Remove the Tension Spring



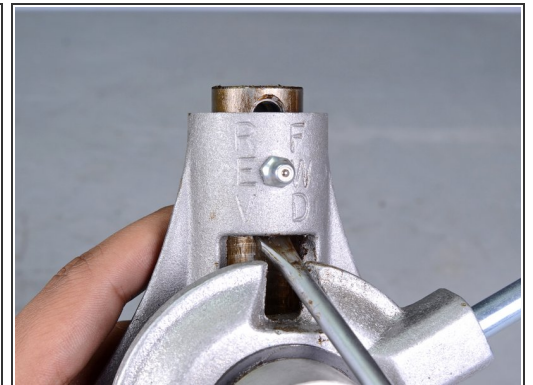
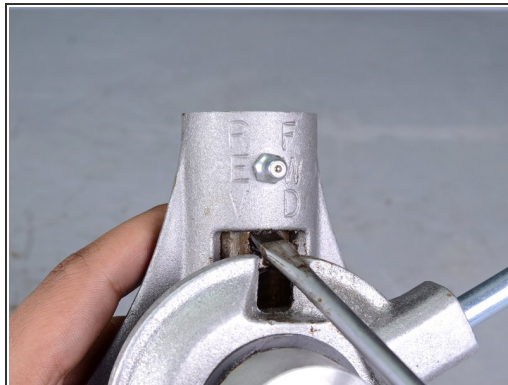
- Insert a flathead screwdriver or other long tool underneath the tension spring in the top feeder assembly.
- Use the tool to push up on the spring and ball bearing carrier so you can remove them by hand.

Step 17



- Remove the ball bearing carrier and tension spring.

Step 18 — Remove the Bearing Carrier Assembly



- Use a flathead screwdriver or other long tool to push up on the bearing carrier so you can remove it by hand.

Step 19



- Remove the top bearing carrier assembly from the feeder body.

To reassemble your device, follow these instructions in reverse order.

After reassembly: Ensure the assembly you just installed is sufficiently lubricated using the Zerk fitting on the feeder body.