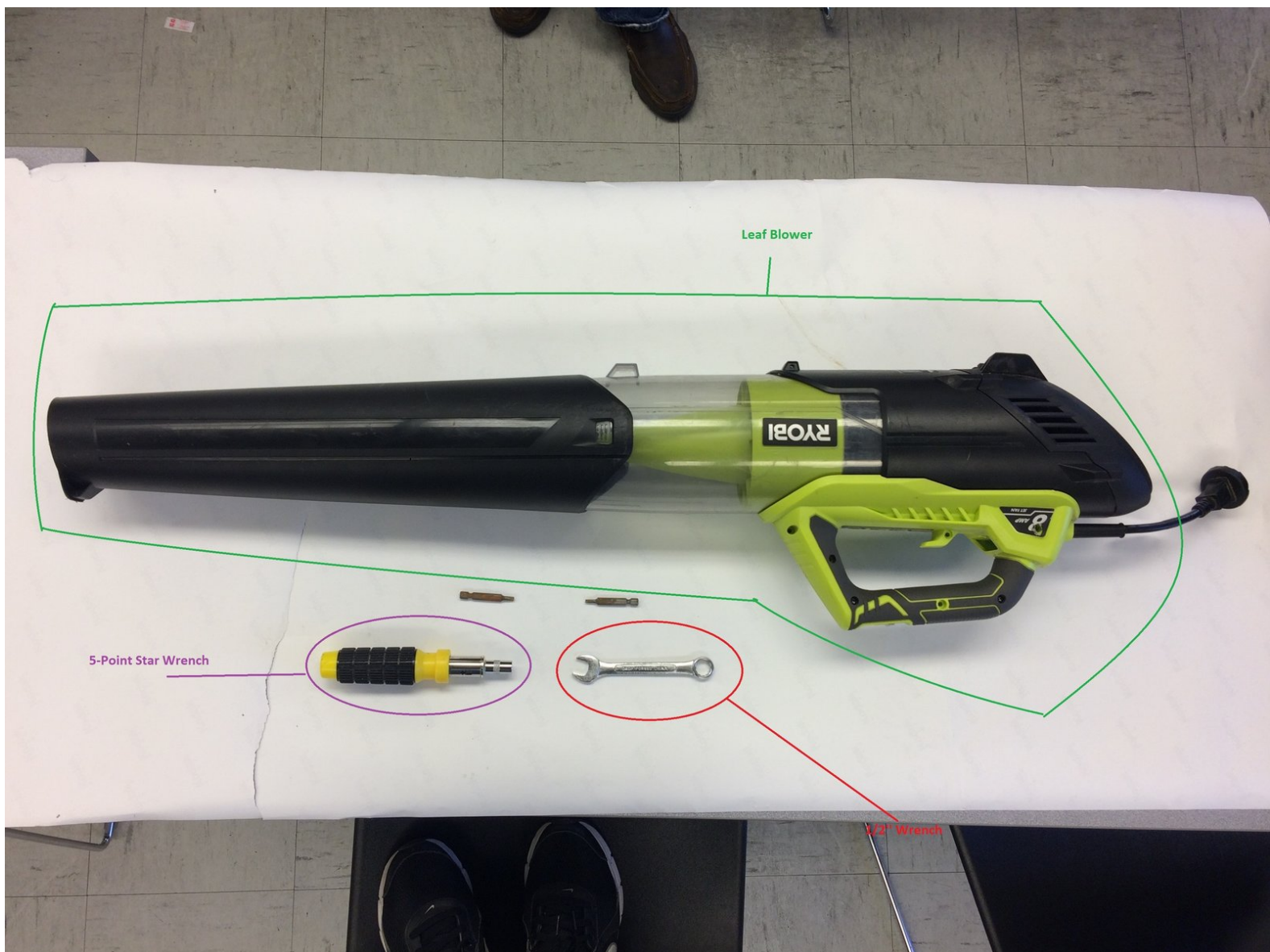




Electric Jet Fan Blower blade fan Replacement

This guide will show you how to disassemble your jet fan and replace a broken fan blade

Written By: Tiara Stigall



INTRODUCTION

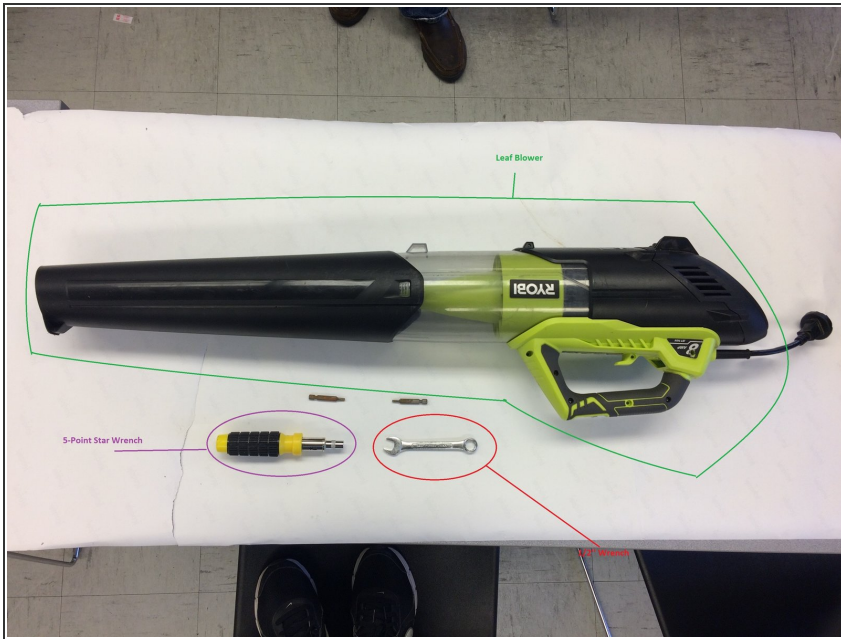
This guide will show you how to disassemble your jet fan and replace a broken fan blade.



TOOLS:

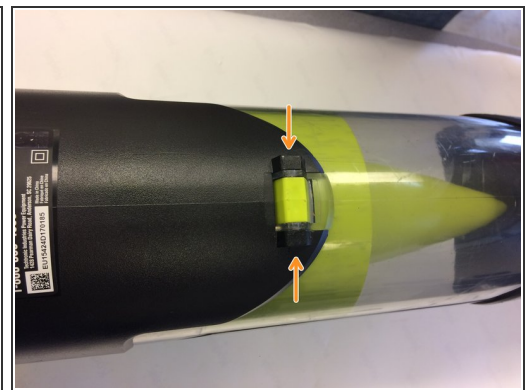
- [1/2" Combination Wrench](#) (1)
 - [#16 5 point screw driver](#) (1)
-

Step 1 — Tools Needed



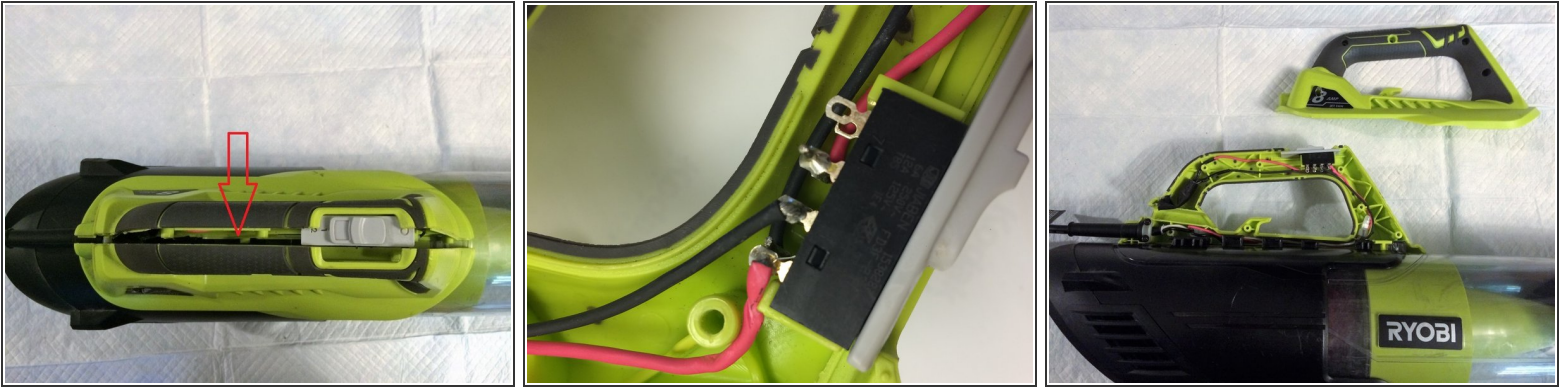
- Tools needed to fix your Ryobi Electronic Jet Fan Blower: 1/2" wrench or socket and a #16 5 point star screwdriver

Step 2 — Disassembly



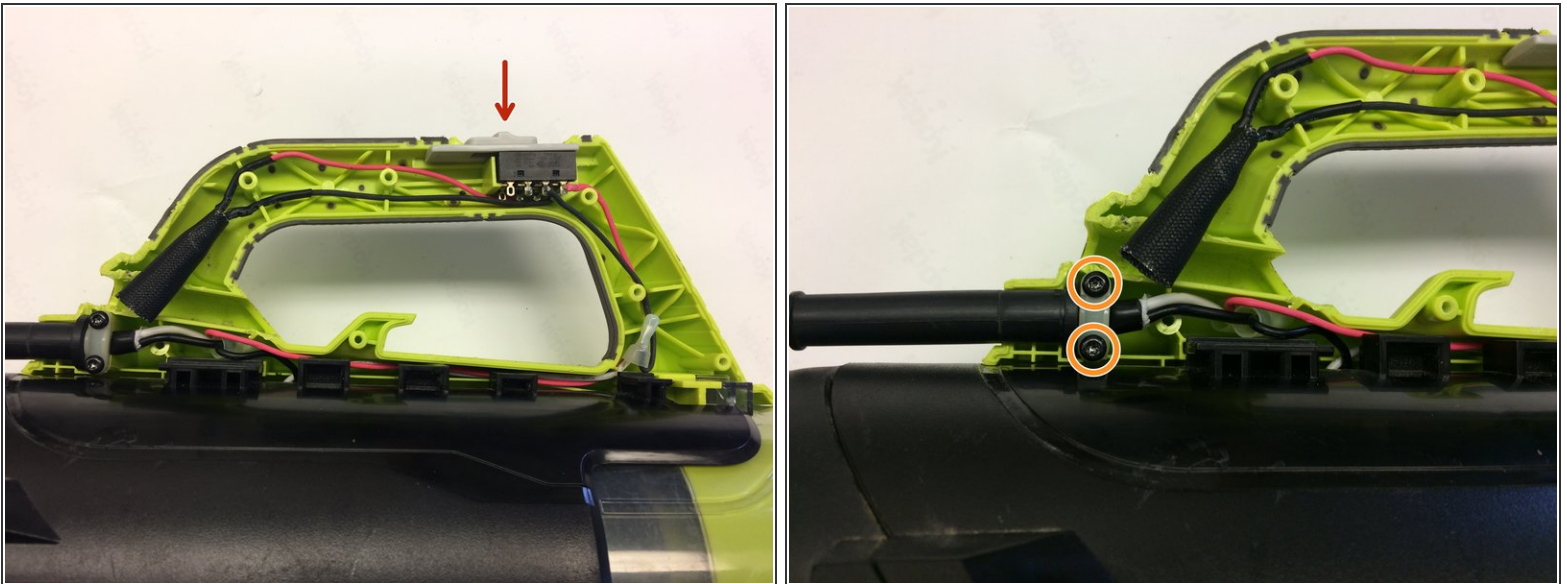
- Locate the 7 screws along the handle and remove them with the #16 5 point star screwdriver
- Locate the 2 additional screws on the under-body and remove them

Step 3



- Gently wedge apart the handle being careful not to damage the wiring inside.
- Carefully separate the two parts of the handle

Step 4



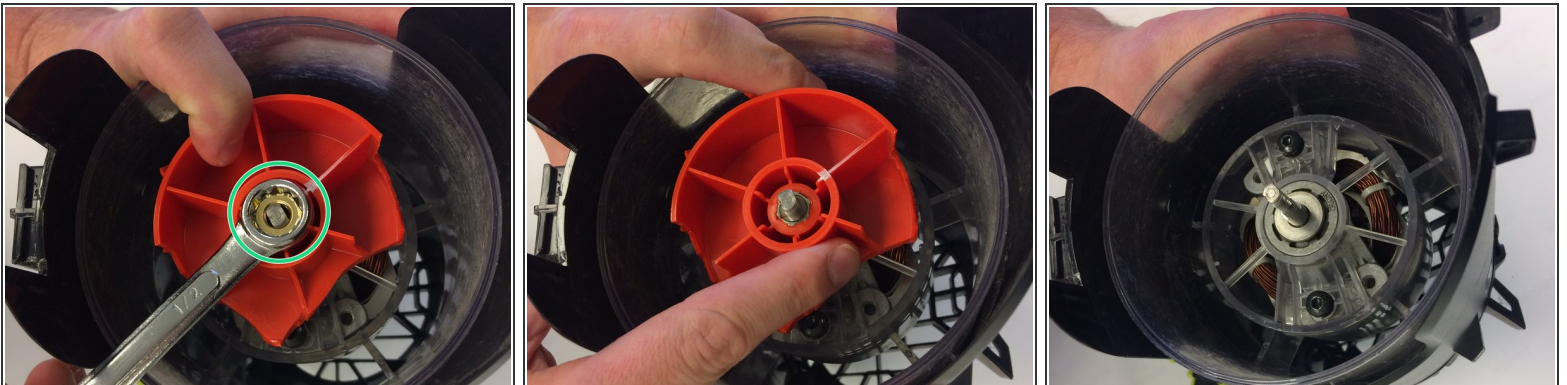
- Remove the grey switch plate. Note how the wiring is laid out on your particular model as it may vary.
- Remove the 2 screws and spacer holding the plug in.

Step 5



- Gently wedge the chute away from the main carriage. It may be on tight but should come apart with light pressure.

Step 6



- Remove nut with a 1/2" wrench (or socket) clockwise while holding the fan blade still.
- The fan blade should easily slide off once the nut is removed. If you are looking to replace your fan blade, you are now able to slide one on.

Step 7



- The fully disassembled Ryobi Electric Jet Fan Blower

To reassemble your device, follow these instructions in reverse order.