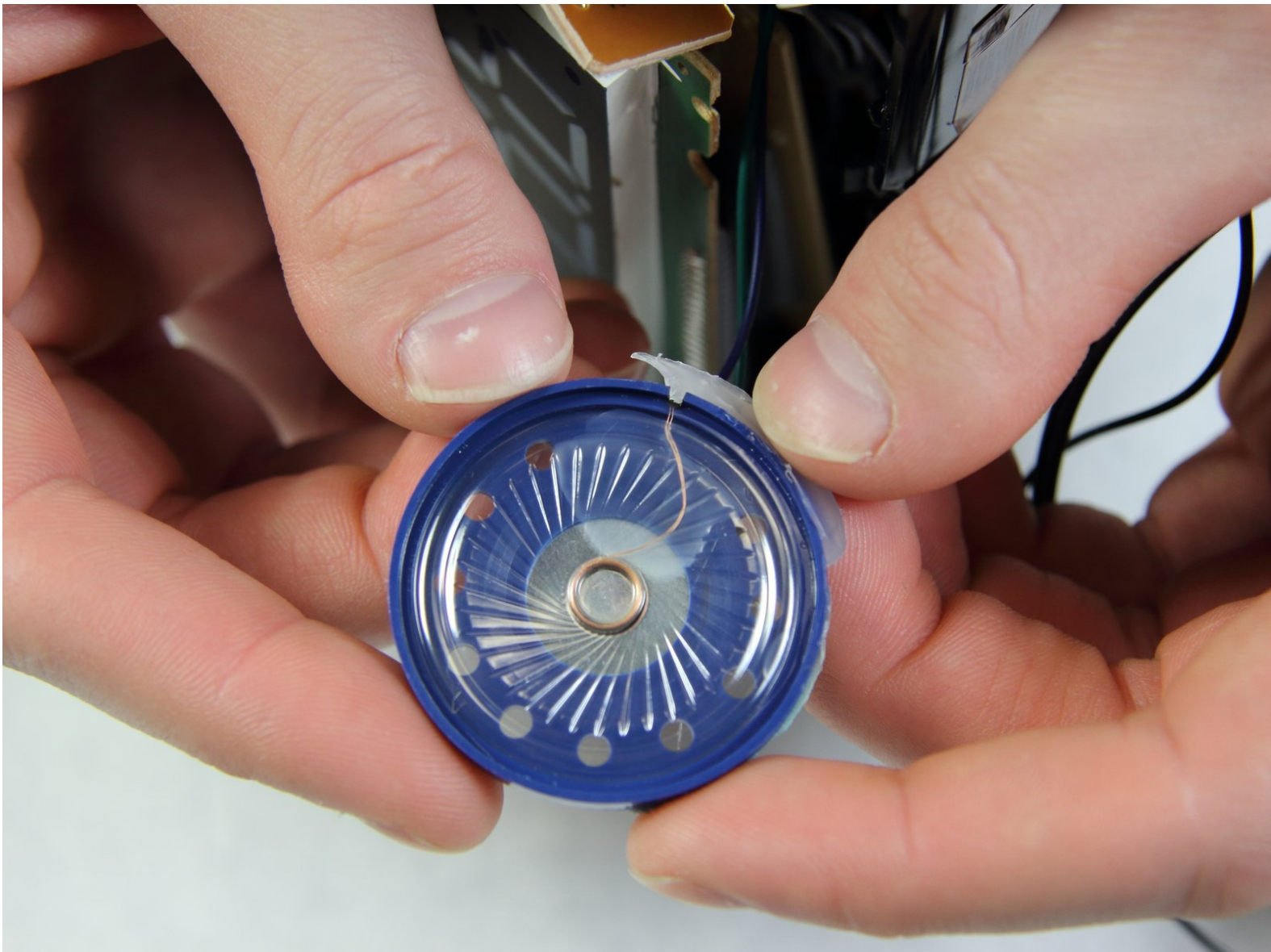




# Electrohome EAAC475 Speaker Replacement

This guide will show how to replace a faulty speaker in an electrohome EAAC475.

Written By: Ruolin Cai



---

## INTRODUCTION

Speaker is a key component for the radio and the alarm in your electrohome EAAC475. This guide will help you to learn how to replace it, should it fail to function.

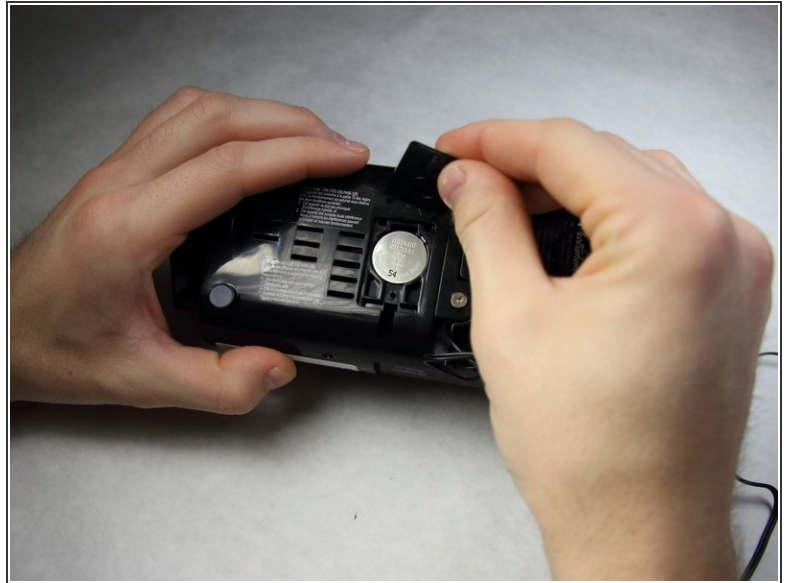
---



### TOOLS:

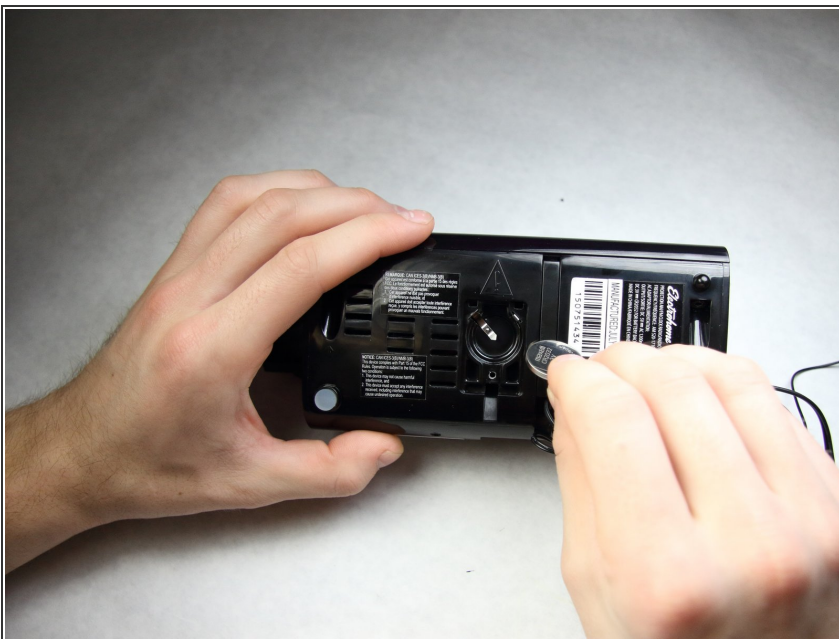
- [Heavy-Duty Spudger](#) (1)
  - [Phillips #1 Screwdriver](#) (1)
-

## Step 1 — Battery



- Remove the 10 mm Phillips #1 screw from the battery cover.
- Remove the battery cover.

## Step 2




- Remove the flat lithium battery.



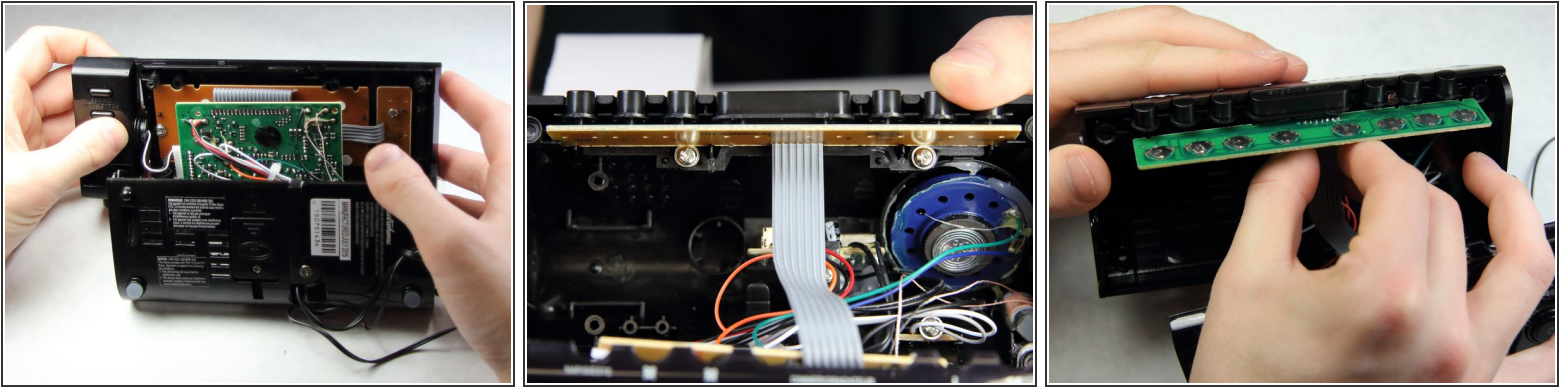
## Step 3 — Buttons




 Disconnect the radio from all power sources.

- Remove the two 10 mm Phillips #1 screws from the bottom of the device.
- Remove two 10 mm Phillips #1 screws from the back side of the device.

## Step 4

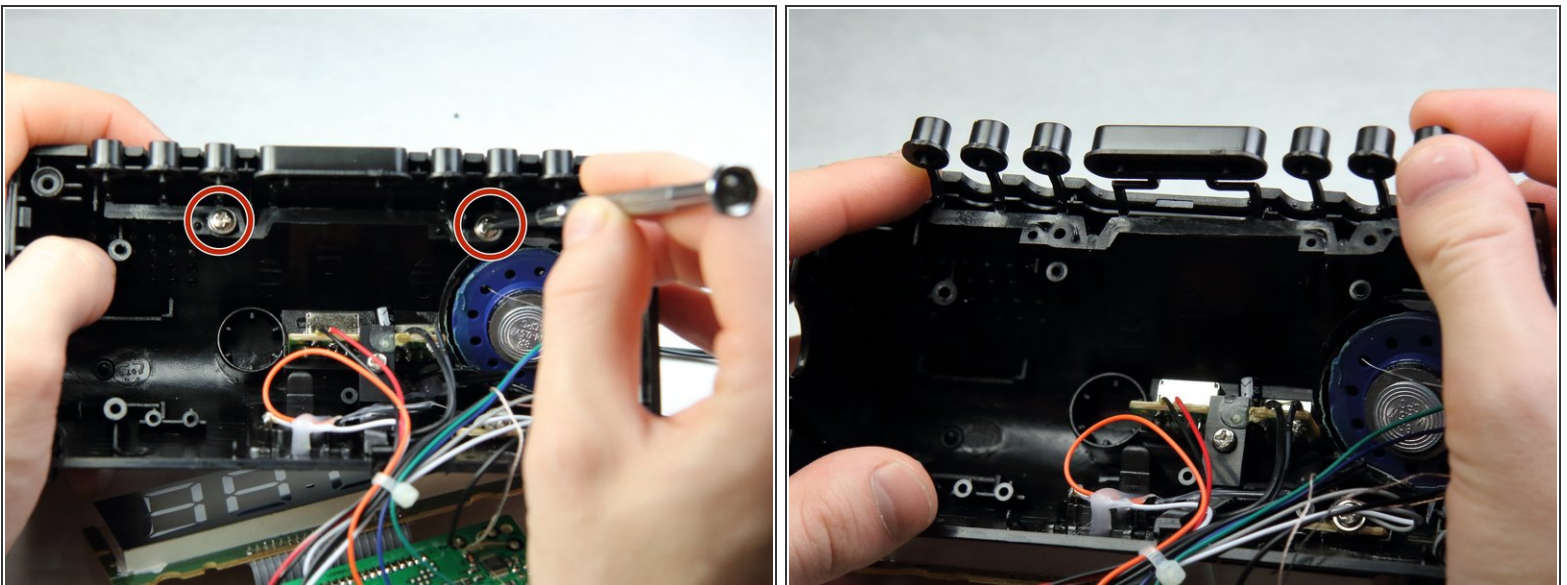


- Carefully and slowly pull the lower case away from the rest of the device.

 Do not completely separate the lower case. There are several wires connecting the two halves of the device.

- Flip the device over to access the button assembly.
- Slowly remove the button contact board from the assembly.

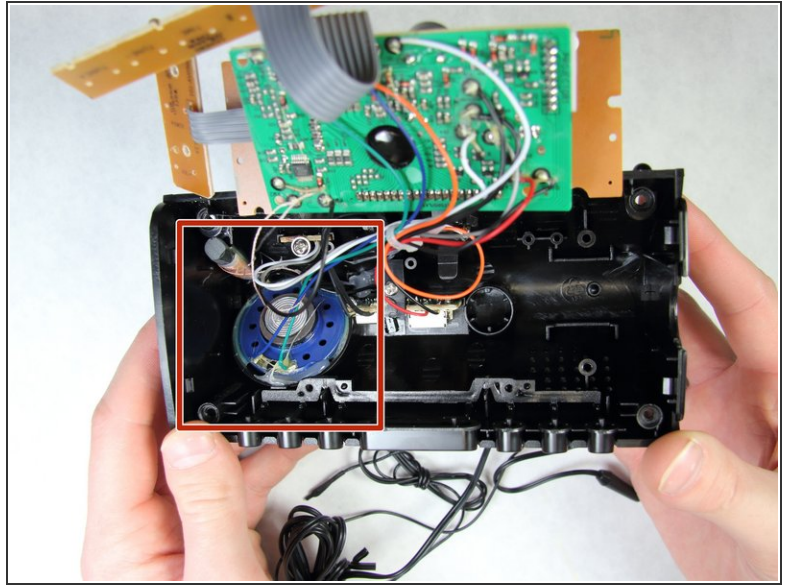
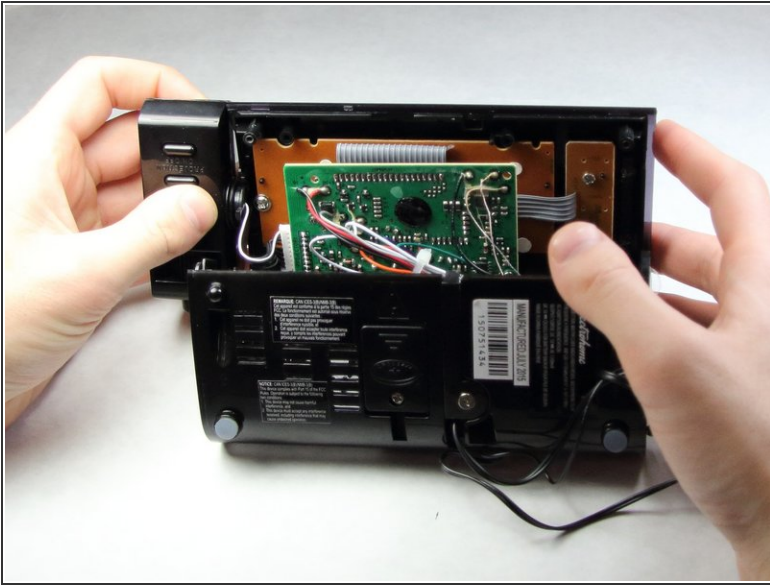
## Step 5



- Remove the two 7 mm Phillips # 1 screws holding the buttons.
- Remove the plastic buttons.

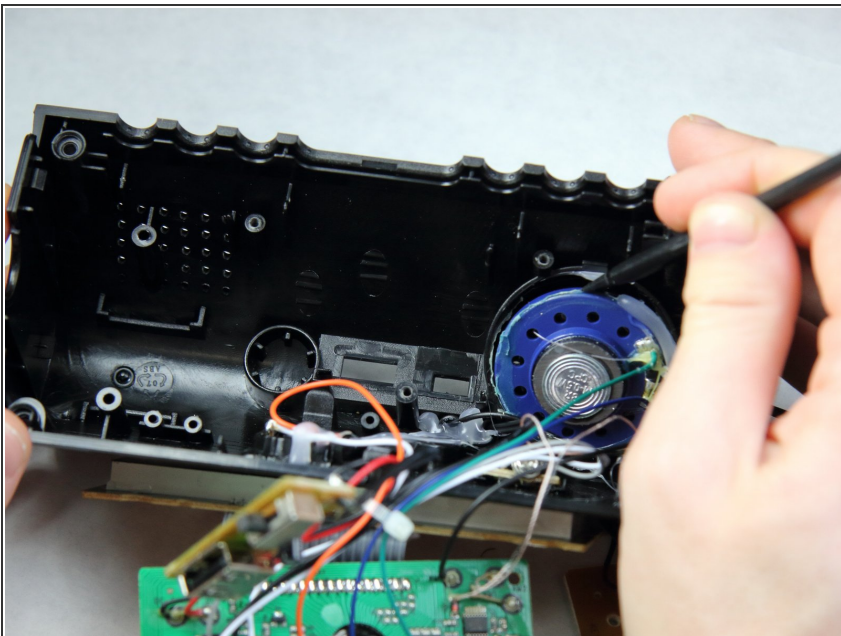


## Step 6 — Speaker



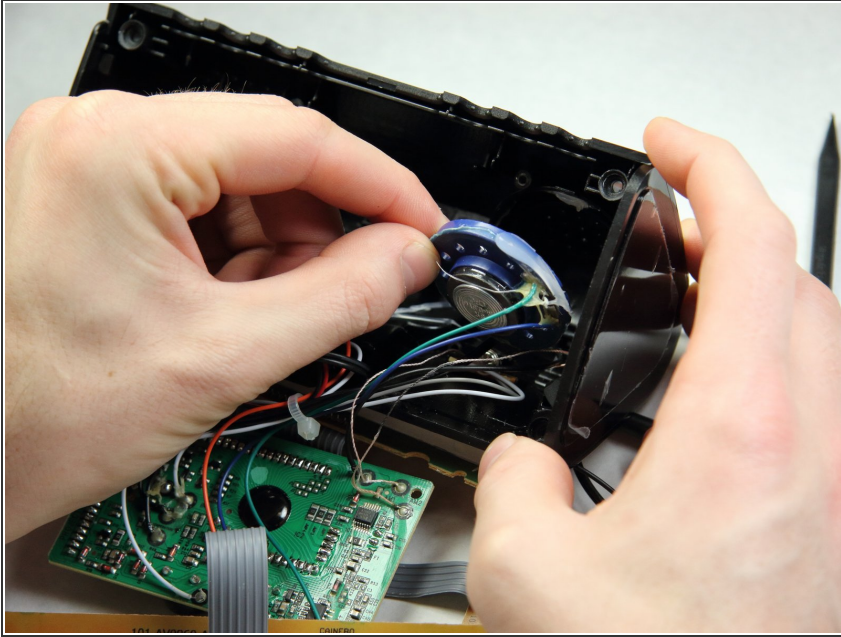
- Carefully and slowly detach one side from another.
- ⚠ Make sure the opposite sides are not separated completely.
- Locate the speaker the inside of the back piece of the device

## Step 7



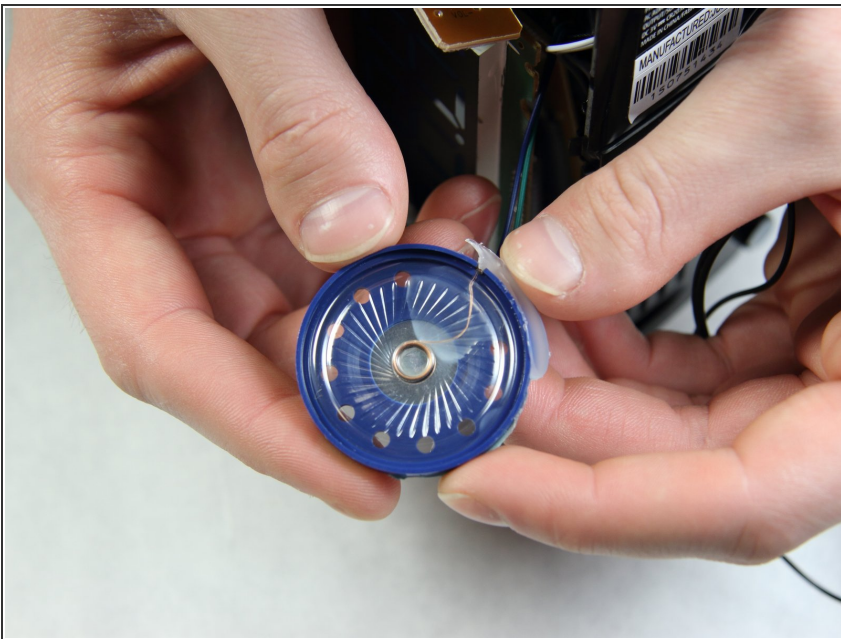
- Use the flat side of the spudger to remove the glue around the speaker.
- ⓘ This glue will need replacing when putting back the speaker.

## Step 8



- After removing all the glue around the speaker, slowly take out the speaker.
- ⚠ Be careful not to break anything surrounding the speaker while using the spudger since it is sharp.

## Step 9



- Detach the wires on the speaker and replace them with new ones.

To reassemble your device, follow these instructions in reverse order.