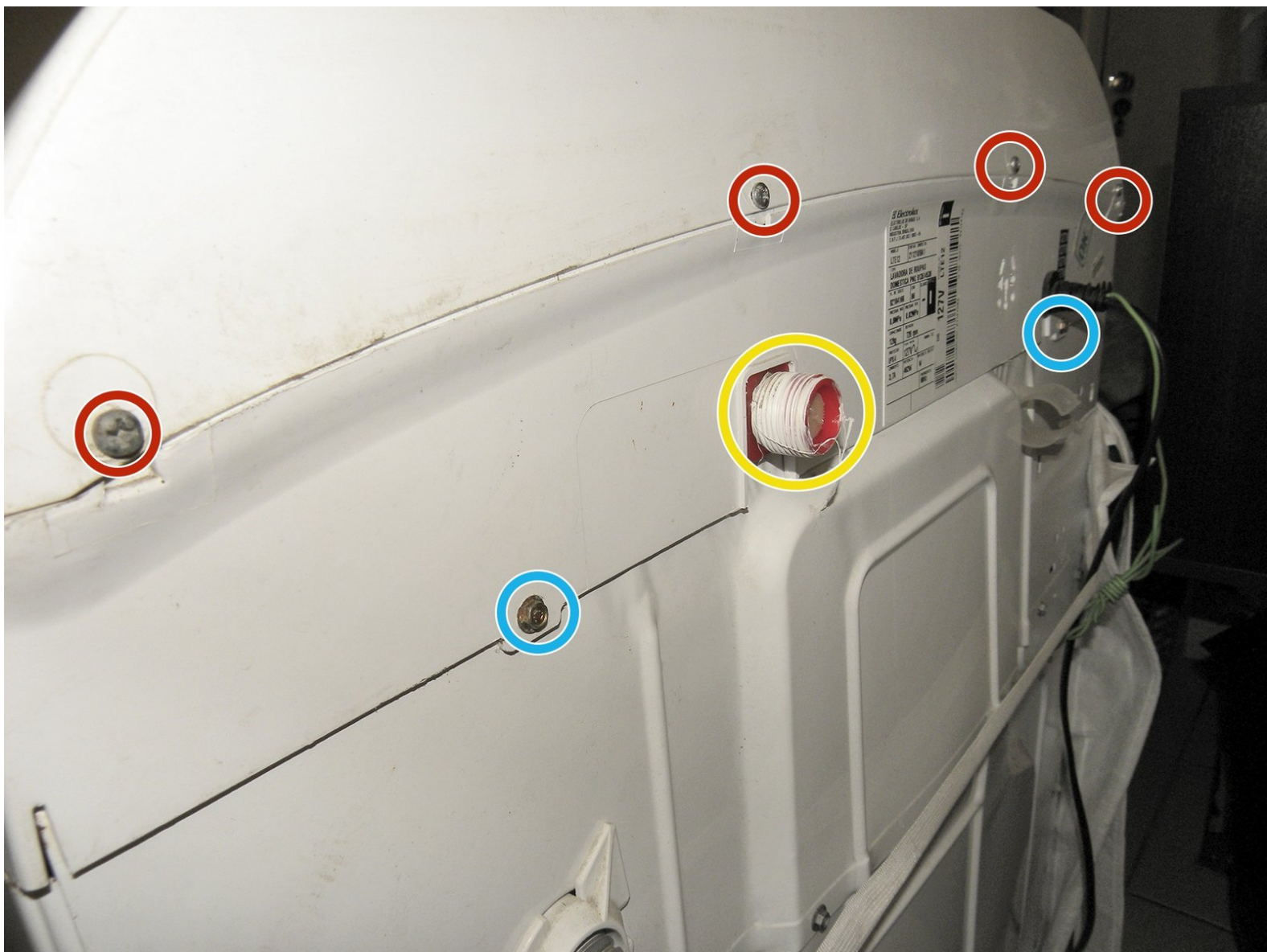




Electrolux LTE12 - Washing Machine Disassembly

Written By: Jose Gustavo Abreu Murta

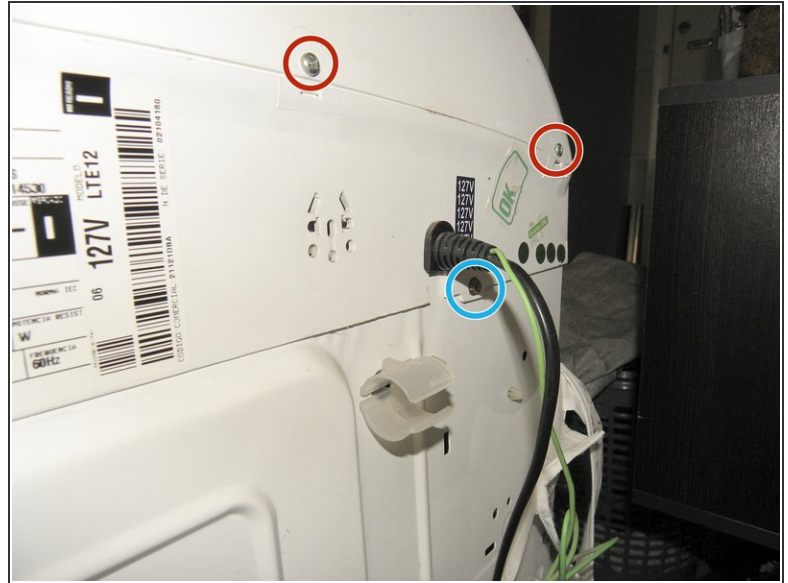
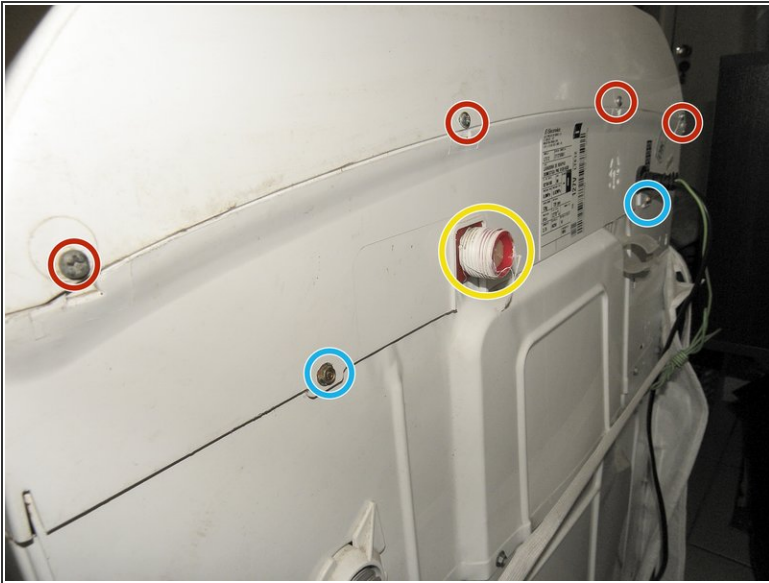




TOOLS:

- [New Item](#) (1)
 - [New Item](#) (1)
 - [New Item](#) (1)
-

Step 1 — Electrolux LTE12 - Washing Machine Disassembly



- Unplug the wall outlet.
- Release the water hose.
- Loosen the 4 Phillips screws at the top and 2 1/4 screws below.

Step 2



- Fasten the lid of the washing machine with a large crepe tape. Do not open when removing the top of the machine.
- There is no need to remove the glass cover to remove the top of the machine.

Step 3



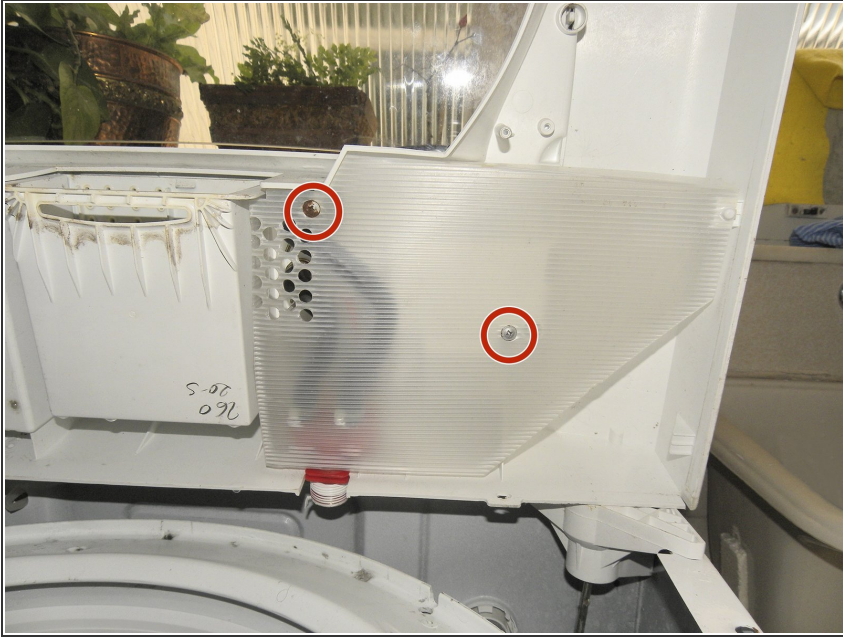
- Open the top of the washer. Lift the back first. And then the front.
- Grip the top of the machine with care. Take care not to drop and break the cover glass.
- Release the power cord and hose clips from the pressure switch.

Step 4



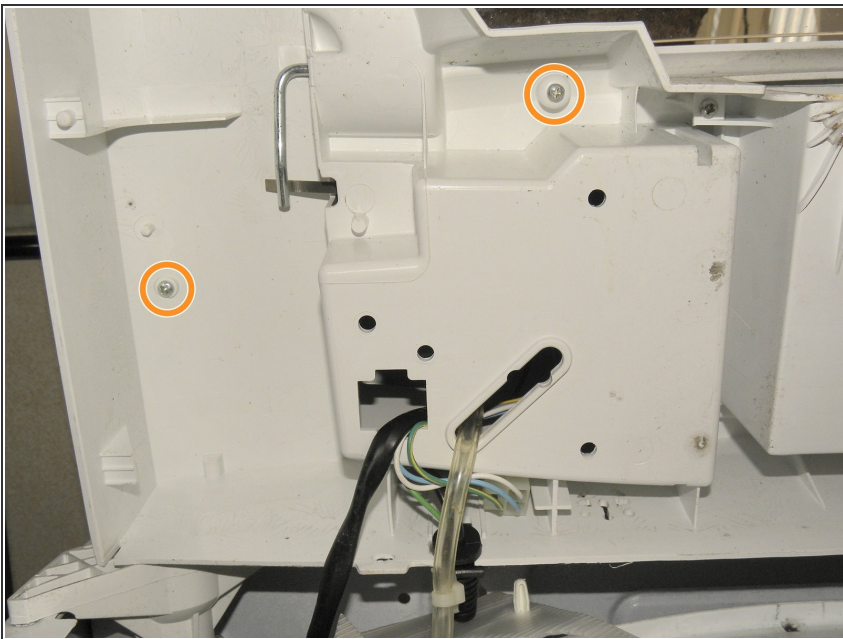
- Remove the Phillips screw.
- Remove the two plastic fasteners.
- Remove the protective cap (semi-transparent) on the left side.

Step 5



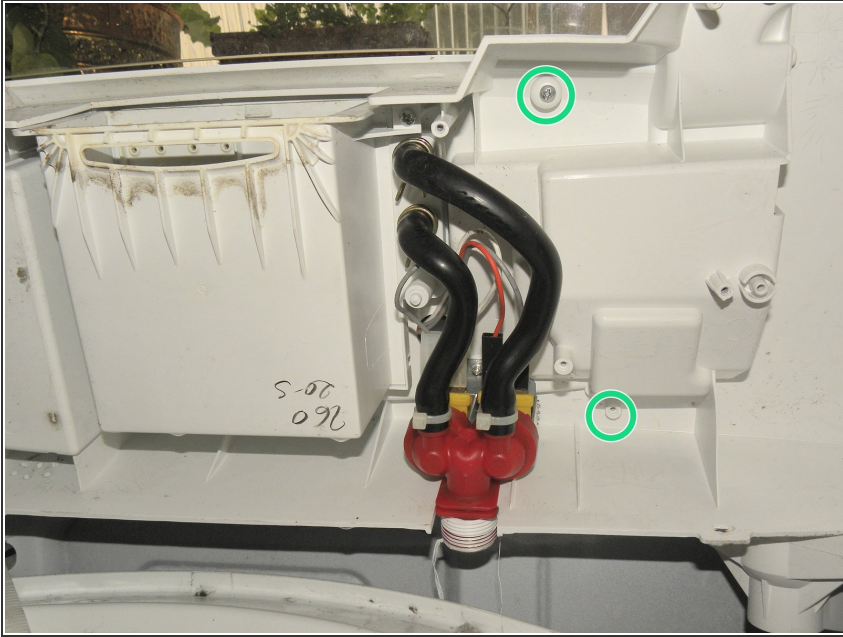
- Remove the two Phillips screws.
- Remove the protective cap (semi-transparent) on the right side.

Step 6



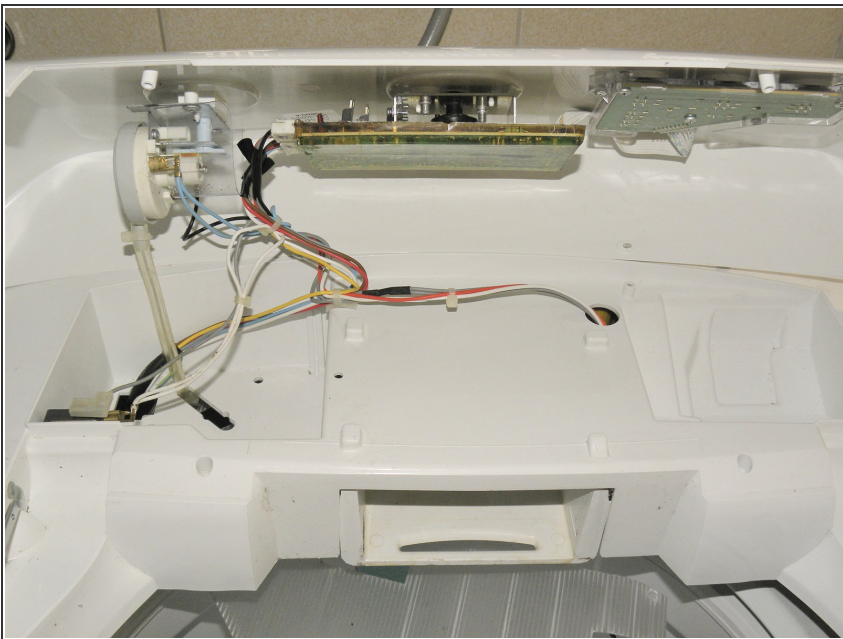
- To loosen the Control Panel cover, loosen the two Phillips screws. (Left side).

Step 7



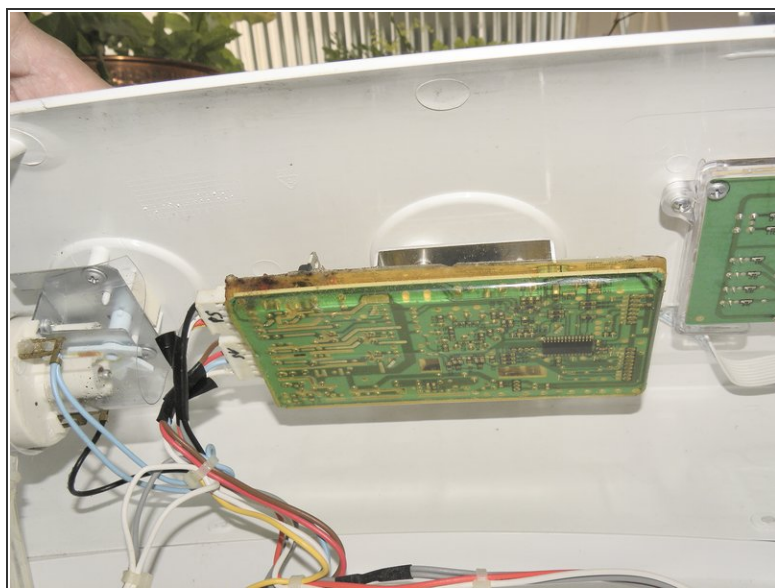
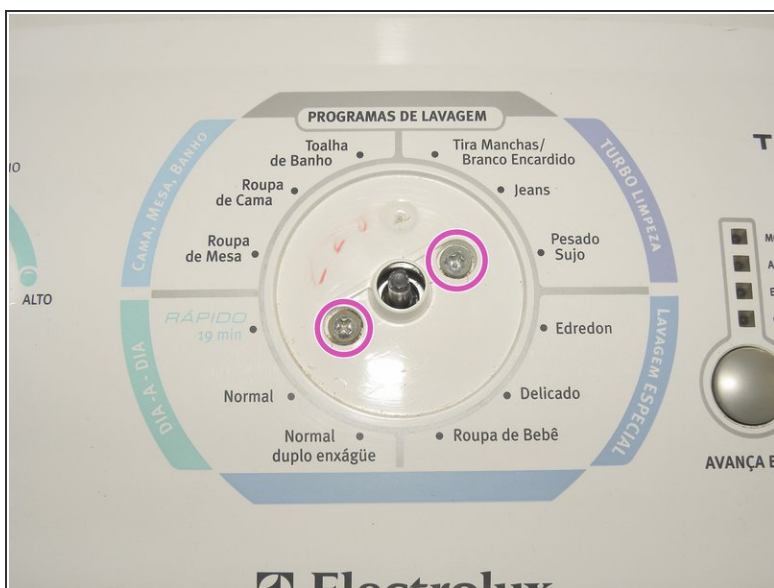
- To loosen the Control Panel cover, also loosen the two Phillips screws on the right side.

Step 8



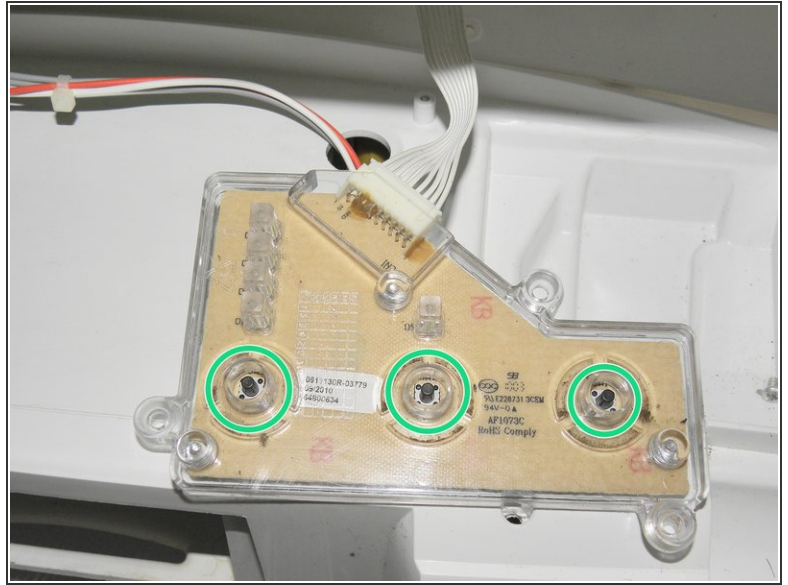
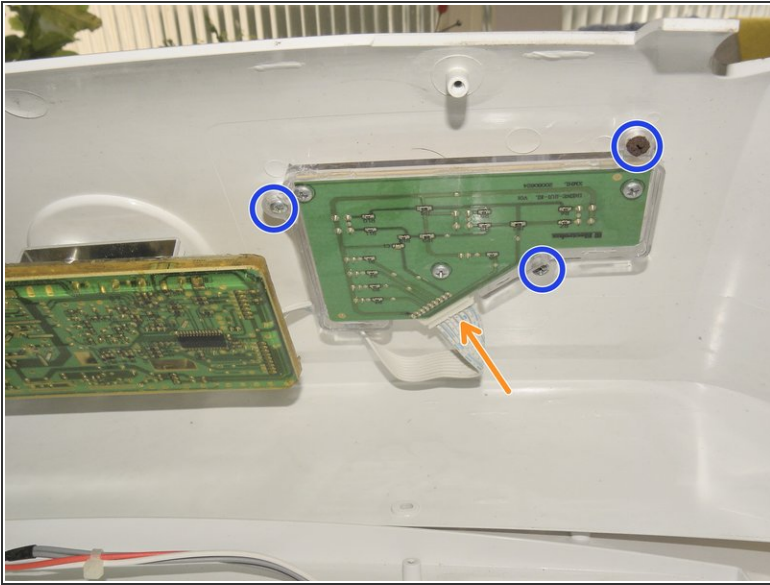
- Carefully lift the cover of the Control Panel. In this photo, the glass cover was removed to enlarge the image.

Step 9



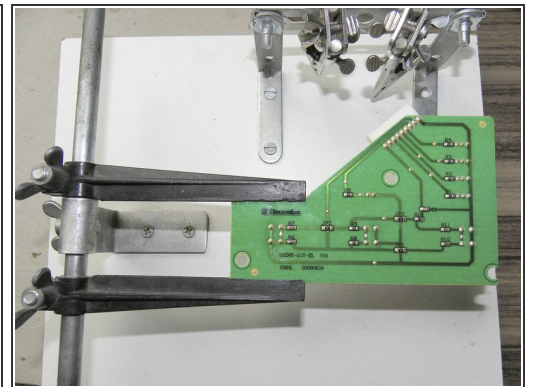
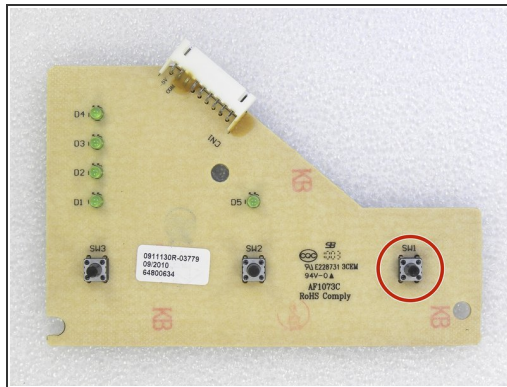
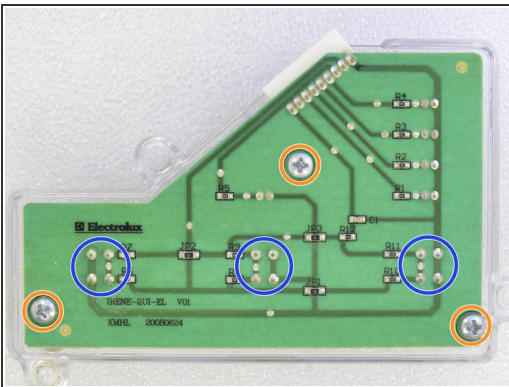
- If there is a need to replace the Power Circuit Board, carefully pull out the program select button.
- And then loosen the two Phillips screws.
- Disconnect the cables carefully.

Step 10



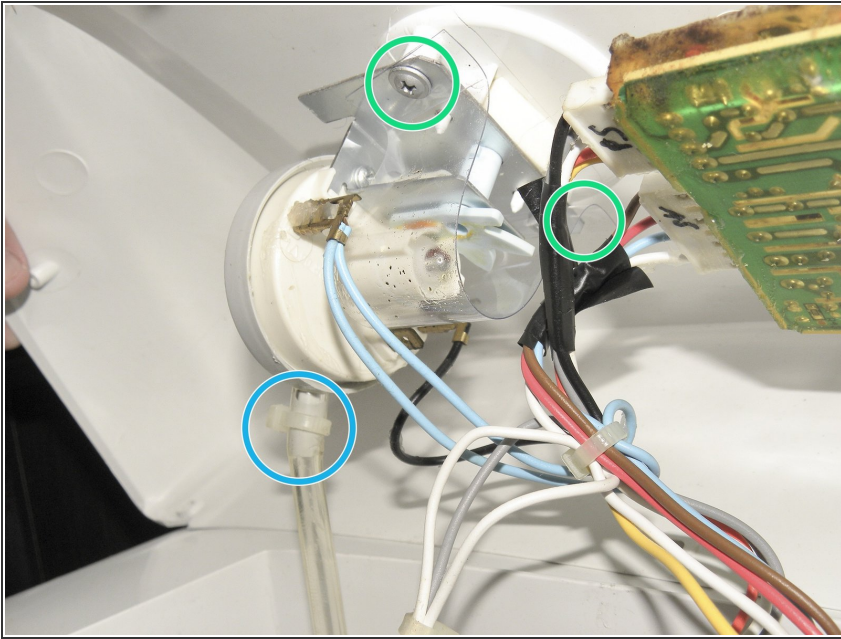
- To remove the circuit board from the Panel buttons, remove the three Phillips screws. Disconnect the cable carefully.
- When removing the circuit board from the buttons, be aware of the three button springs.

Step 11



- If you need to replace any components on the button circuit board, loosen the three Phillips screws to remove the acrylic shield.
- The problem with my machine was the power button. With a soldering iron and a sucker, I switched on the power switch.

Step 12



- To change the pressure switch, cut the clamp and remove the
- Disconnect wires.
- And then loosen the two Phillips screws.

Step 13



- To assemble the Washing Machine, follow the same procedure, in the reverse order.

To reassemble your device, Follow these instructions in reverse order.