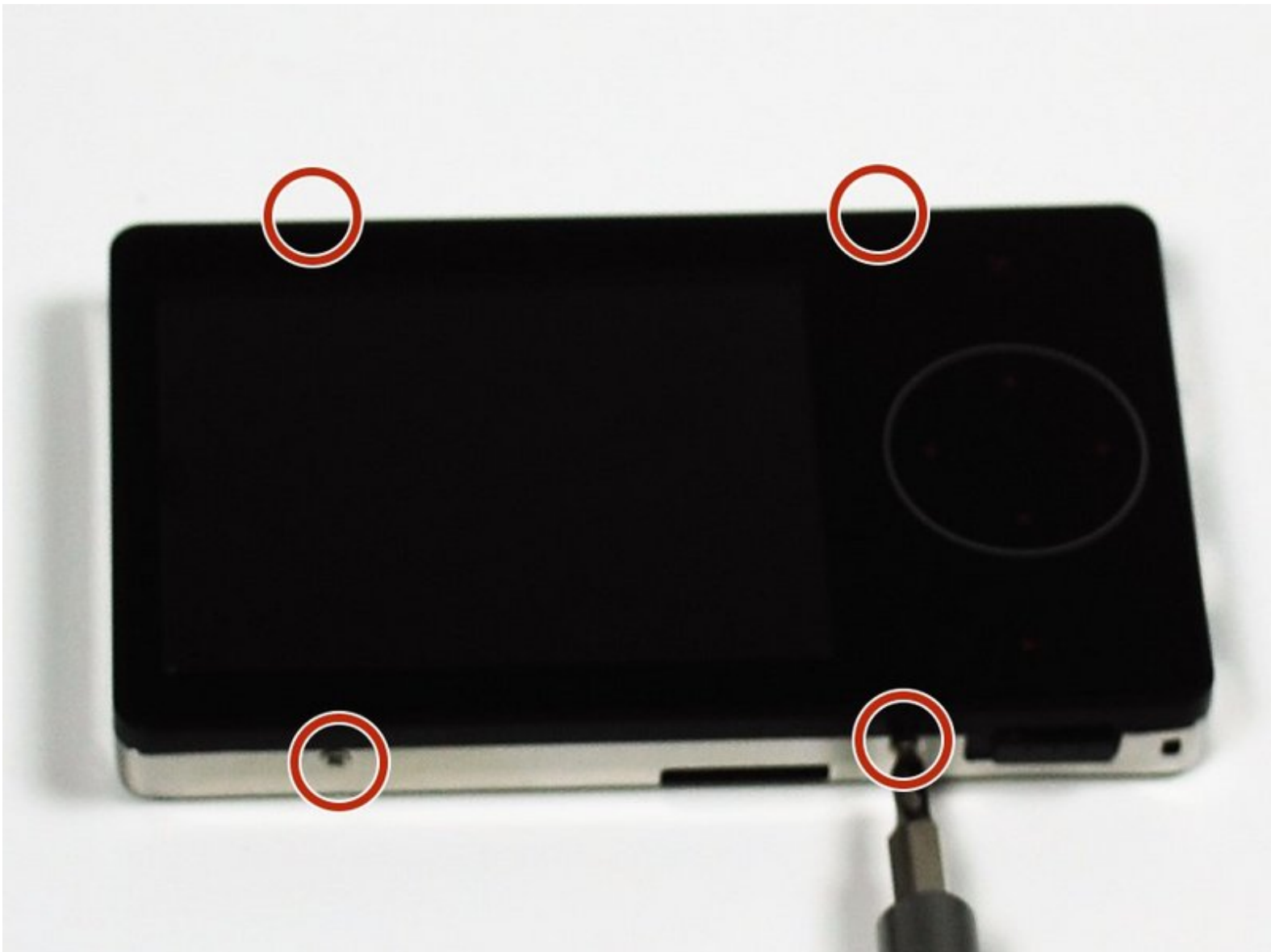




Element GC-1020 Back Cover Replacement

Prerequisite Only

Written By: Lashaun Noel



INTRODUCTION

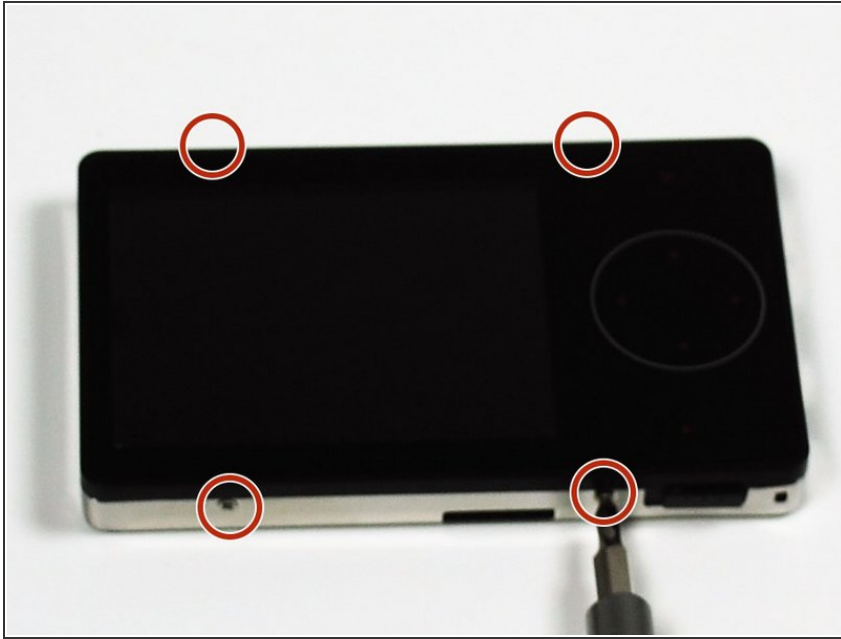
Prerequisite only guide for Element GC-1020 back cover replacement.



TOOLS:

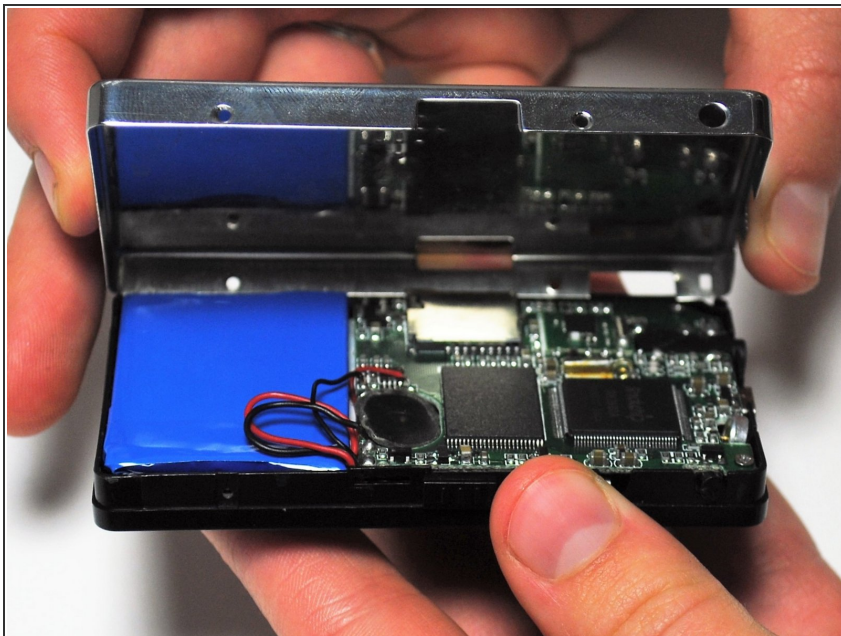
- [Phillips #0 Screwdriver](#) (1)
-

Step 1 — Back Cover Replacement Guide



- Unscrew the four screws (size: 3.175mm) on the left and right side of the Element Electronics GC-1020 device using the PH#0 screwdriver.

Step 2



- Carefully pull the back of the device (the silver portion) apart from the rest of the device.
- ⓘ If you pull back too forcefully the power button would move out of place.

To reassemble your device, follow these instructions in reverse order.