



# Emachine C2881 Teardown

Here I am going to teardown the emachine model C2881. Tools needed: Phillips head screwdriver

Written By: Duncan Rutherford



---

## INTRODUCTION

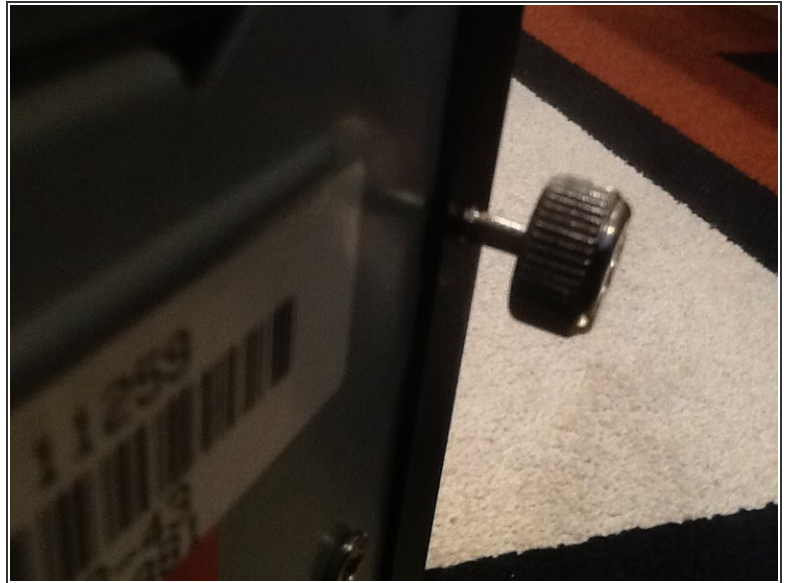
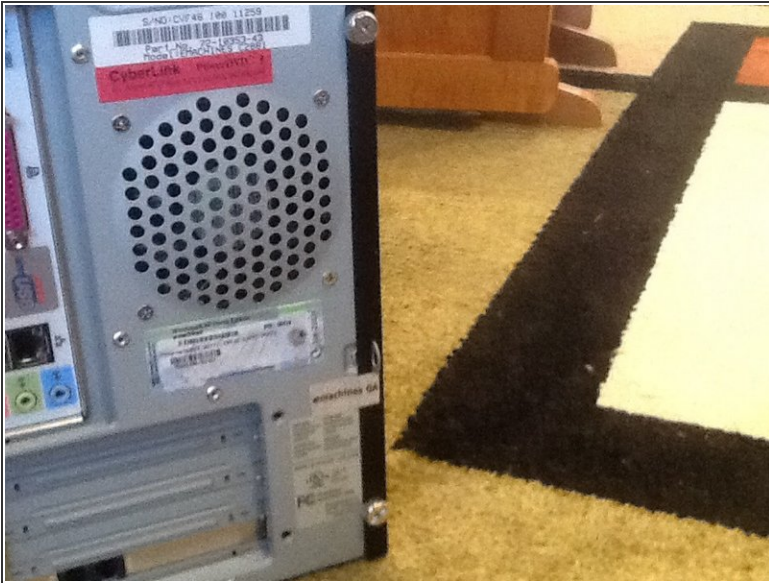
We are going to tear down the emachine model C2881. You will only need a philips head screwdriver for this teardown.



### TOOLS:

- [Phillips #2 Screwdriver](#) (1)
-

## Step 1 — Emachine C2881 Teardown



- i** Before you begin: Please unplug the unit from the wall along with any other cables and hold the power button down for 30 seconds to discharge any static energy. Also please do not work on carpet and wear a wrist strap.
- First, loosen but do not remove the two thumb screws at the back on the left side.



## Step 2



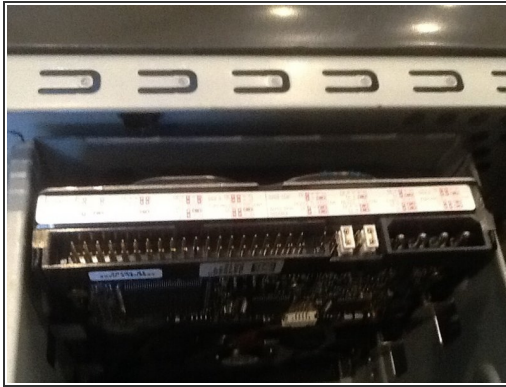
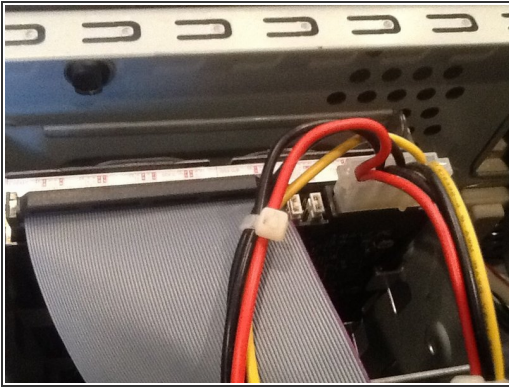
- Next, slide the back panel towards the back of the unit.
- Then set the panel aside.

## Step 3



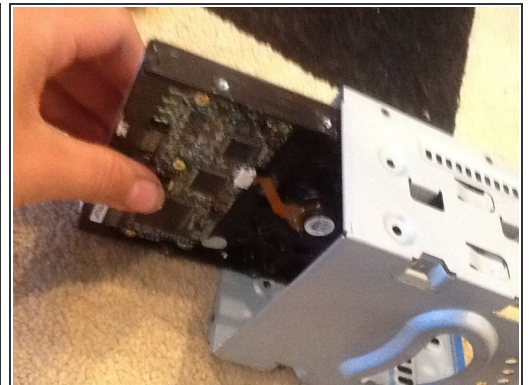
- Turn the unit on its side
- Then remove the screw securing the hard drive bay in place.

## Step 4



- Disconnect the hard drive power cable, and data cable.
- And remove the hard drive bay

## Step 5



- Remove the 2 phillips head screws on the hard drive bay.
- Then push the hard drive up and then pull it out



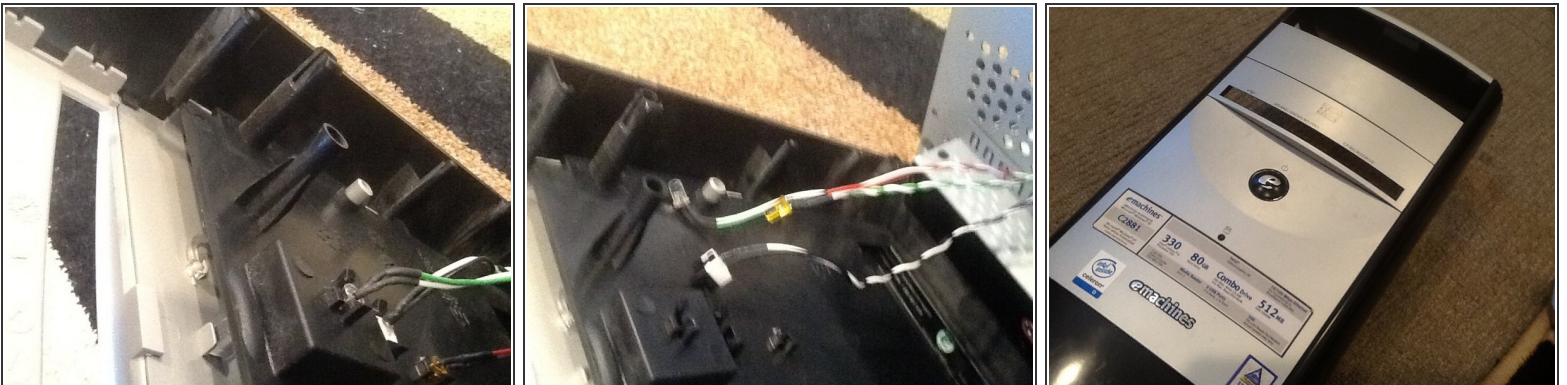
## Step 6



- To remove the front panel, Grasp the top, and pull it outward and upward.

⚠ Don't pull it out too hard, as there are three cables still connected to the panel.

## Step 7



- Push the clips back on the 2 LED'S and the power switch to remove each.
- And then remove the front panel.

## Step 8



- Remove the single screw securing the audio box.
- Then rotate it 90 degrees down and pull it forward

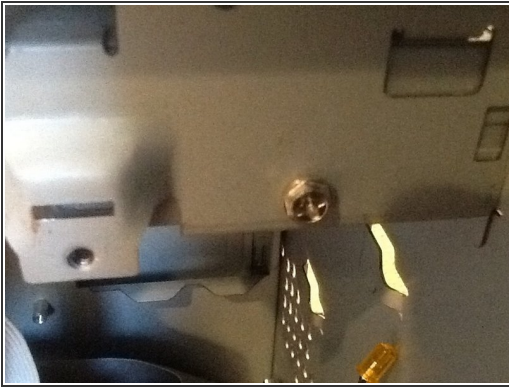
## Step 9



- Remove the two screws on the audio box. Then pull it out and set the case aside.

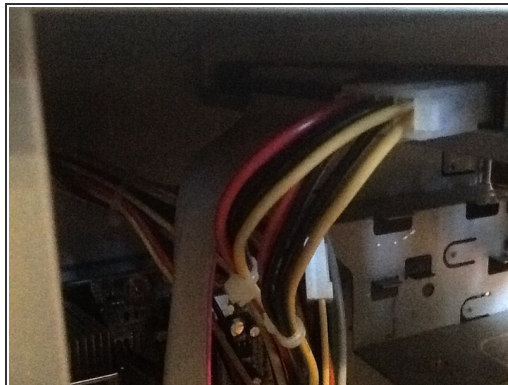


## Step 10



- Remove the single screw from the SD card reader.
- Then remove it

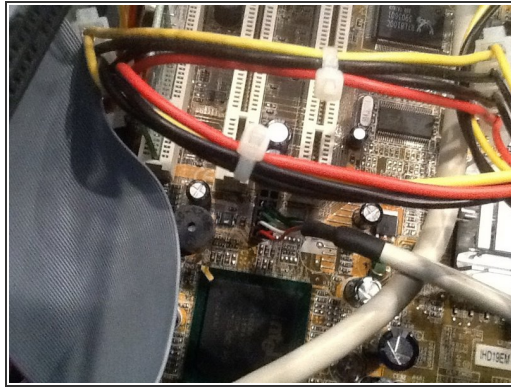
## Step 11



- Now remove the 2 screws from the DVD player. Disconnect the cables and remove it.

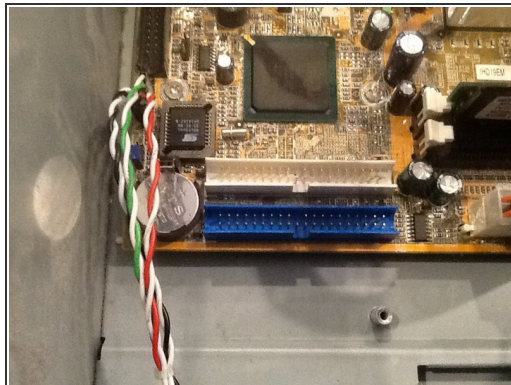
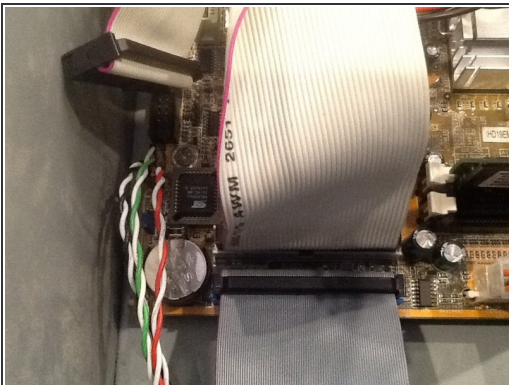


## Step 12



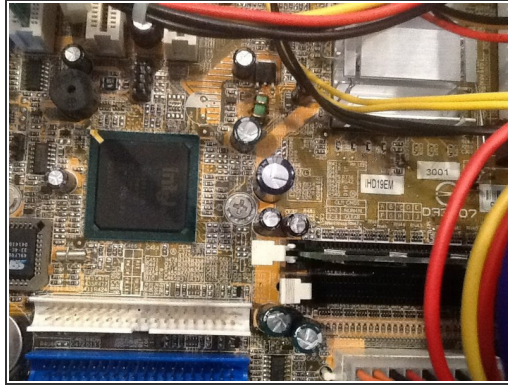
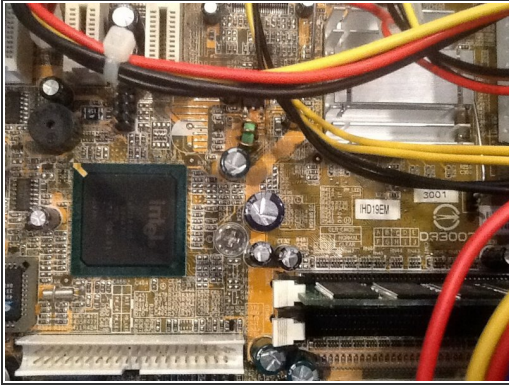
- Turn the computer back on its side
- Remove the cables for the card reader, and the audio box and remove all of the above.

## Step 13



- Disconnect the DVD drive cables, and the hard drive cables and set them aside.

## Step 14



- Remove the RAM by pushing down on the two tabs. Then pull up on the RAM

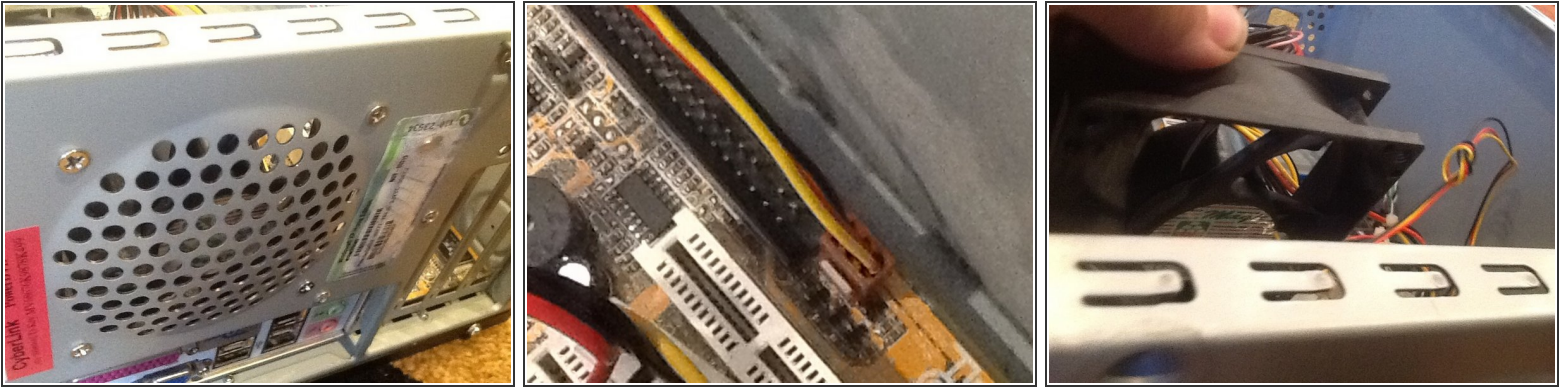
## Step 15



- Remove the single screw securing the phone card. Then pull it up and out.

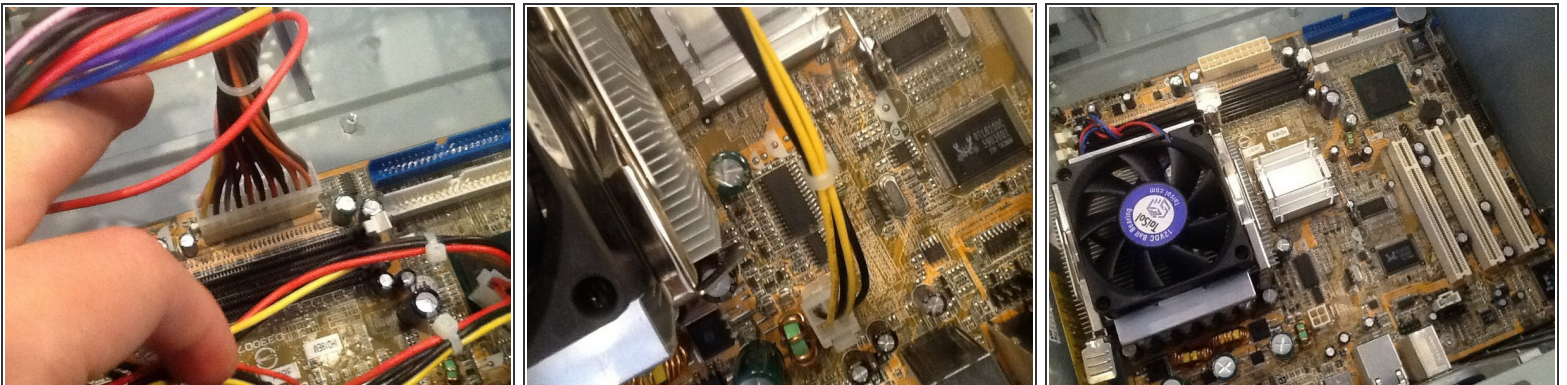


## Step 16



- Remove the four screws securing the back fan. Disconnect the cable
- Pull the fan out of the inside of the case

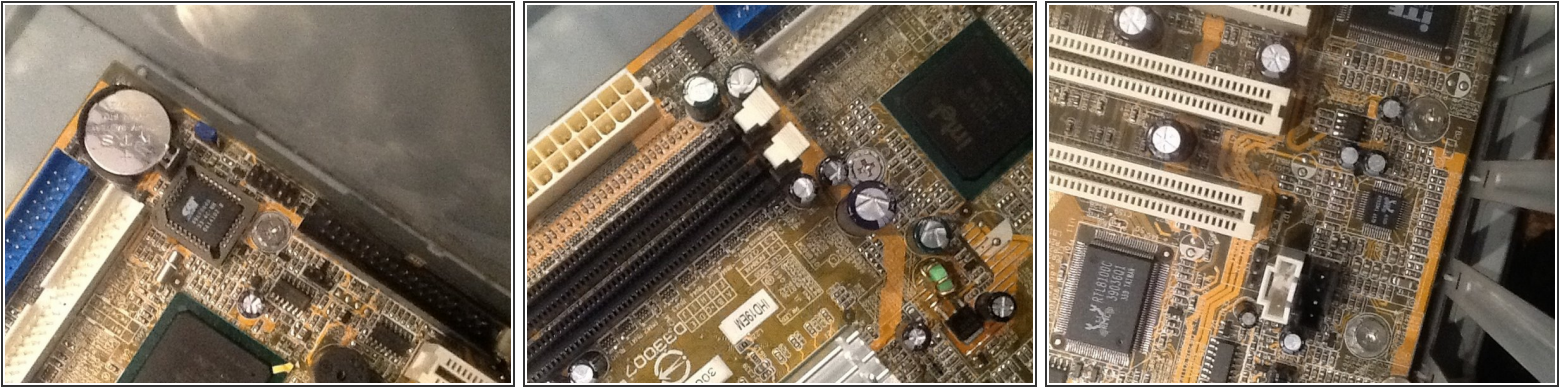
## Step 17



- Disconnect the 20 Pin motherboard cable and the four pin cable.

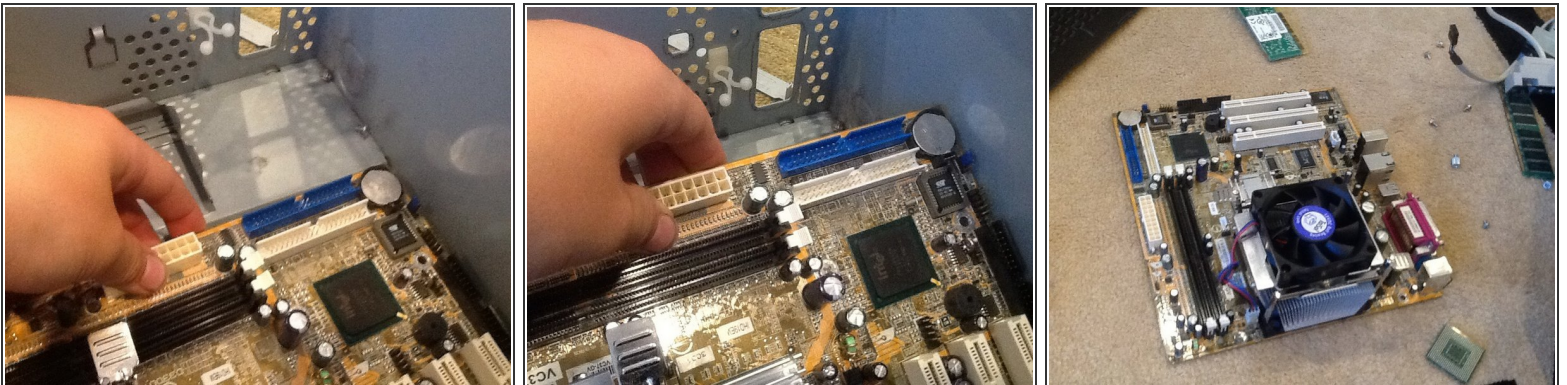


## Step 18



- Remove the six screws from the motherboard, one in each corner and two in the middle in between these

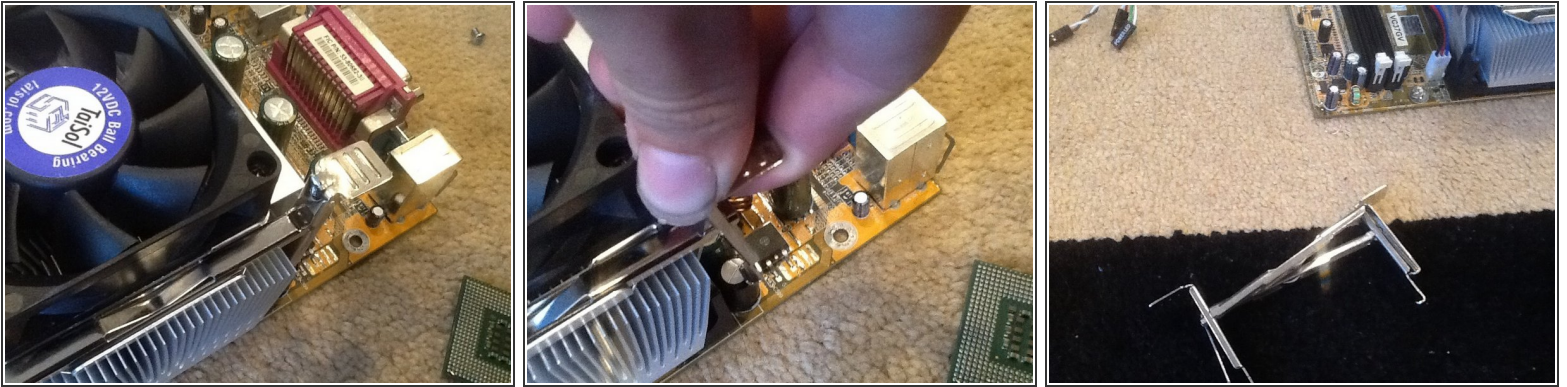
## Step 19



- Grasp the motherboard by the side that would face the front of the computer, and pull it towards the front, and then up.

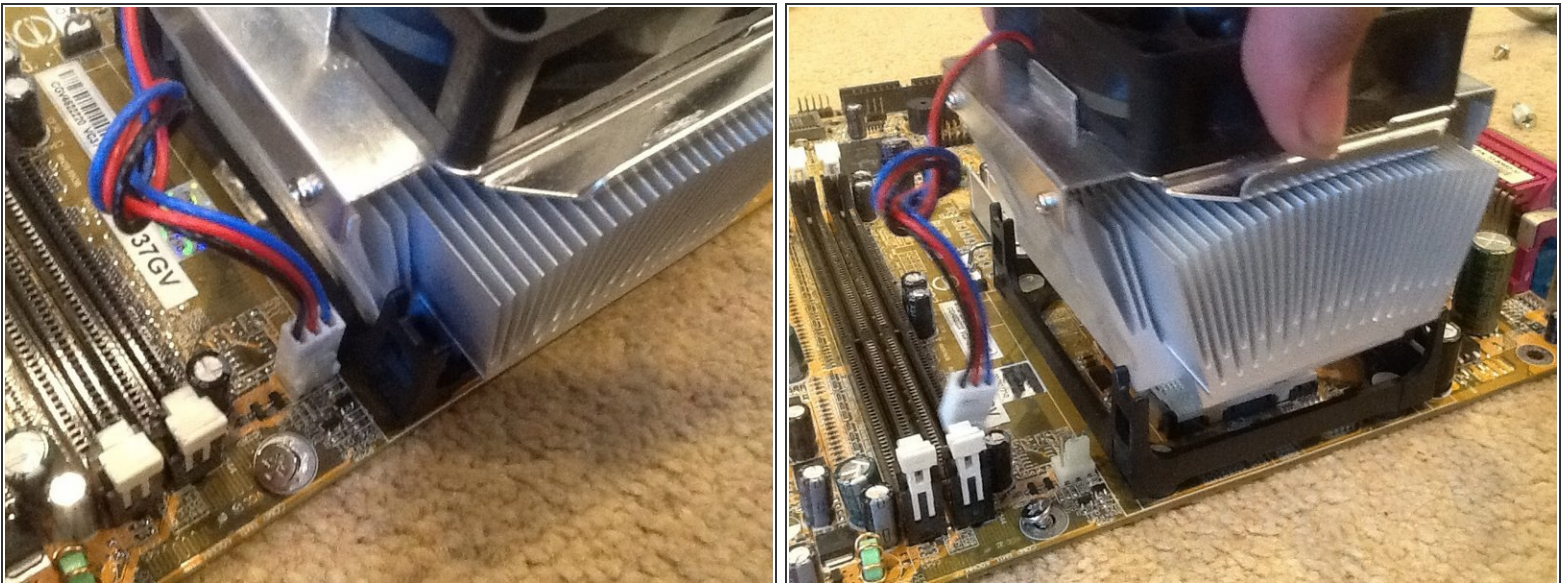


## Step 20



- Remove the Heatsink clips by pushing down and out on the clips.

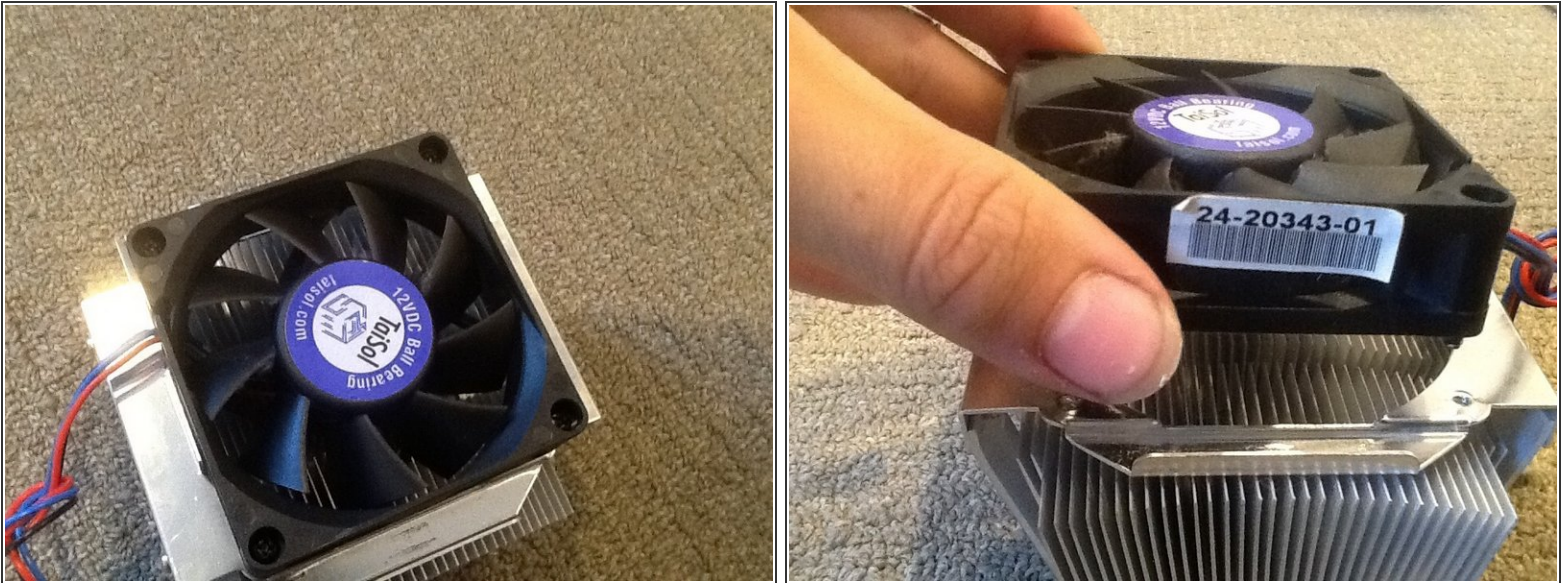
## Step 21



- Disconnect the fan cable and lift the heat sink up



## Step 22



- Remove the four screws from the heatsink fan and remove the fan.

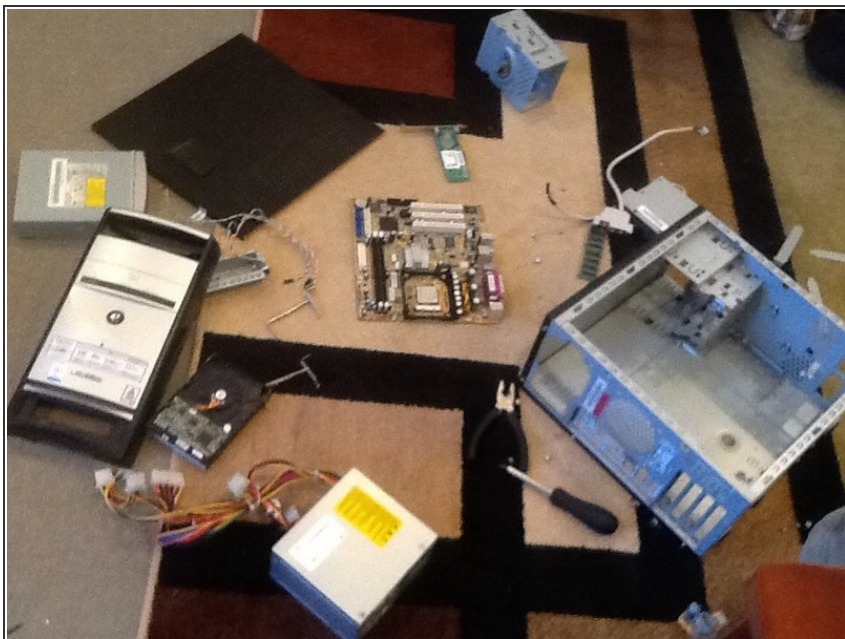
## Step 23



- Remove the four screws from the power supply and then pull it back and out



## Step 24



- Congratulations you have successfully torn down your emachine model C2881

To reassemble your device, follow these instructions in reverse order.