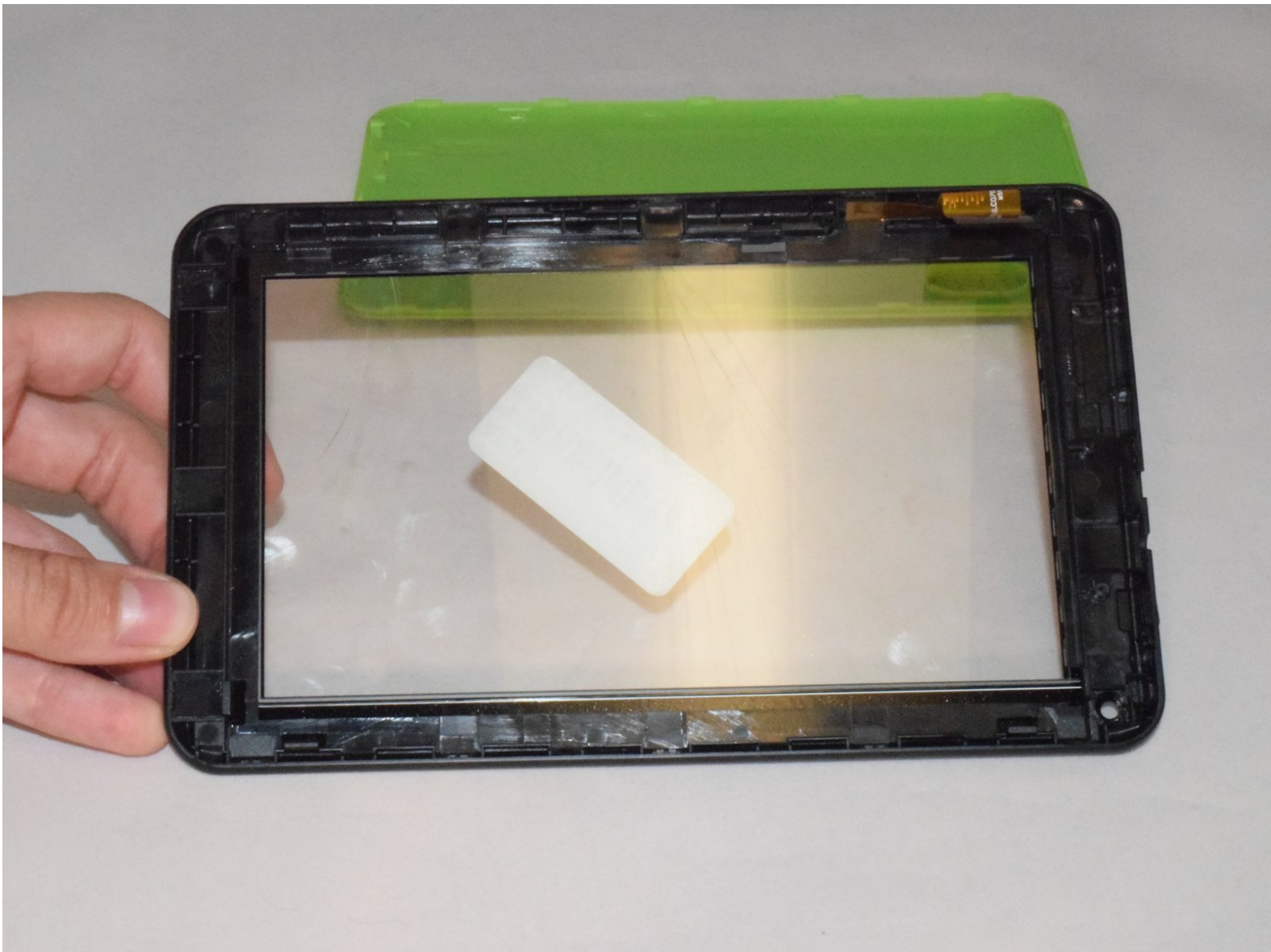




Ematic EGQ307 Digitizer Replacement

This guide will show you how to replace the digitizer in your tablet.

Written By: Jonathan Scinto



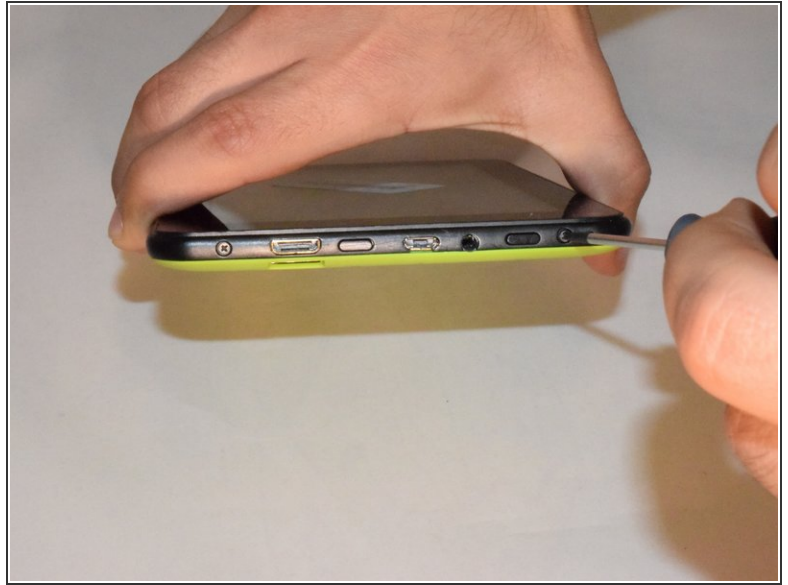
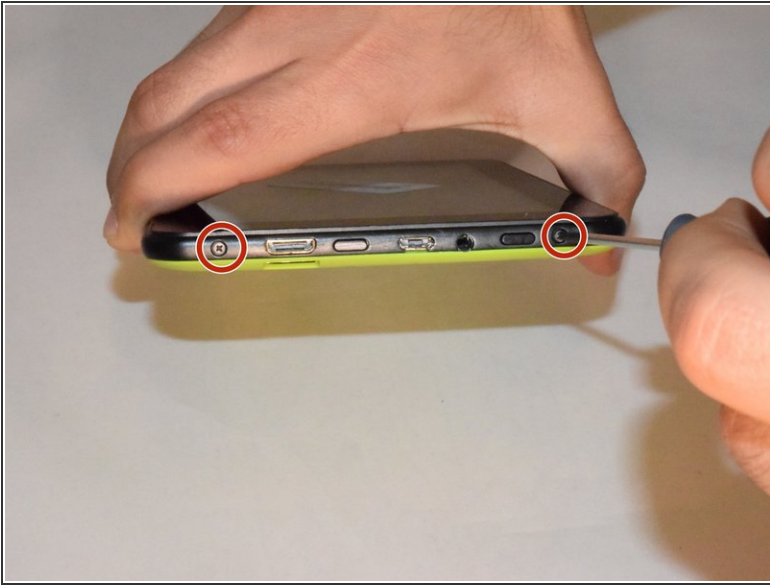
INTRODUCTION

If your digitizer is no longer responding to your touch or is cracked then you may need to replace it, this guide will teach you exactly how to replace your tablet's digitizer.

TOOLS:

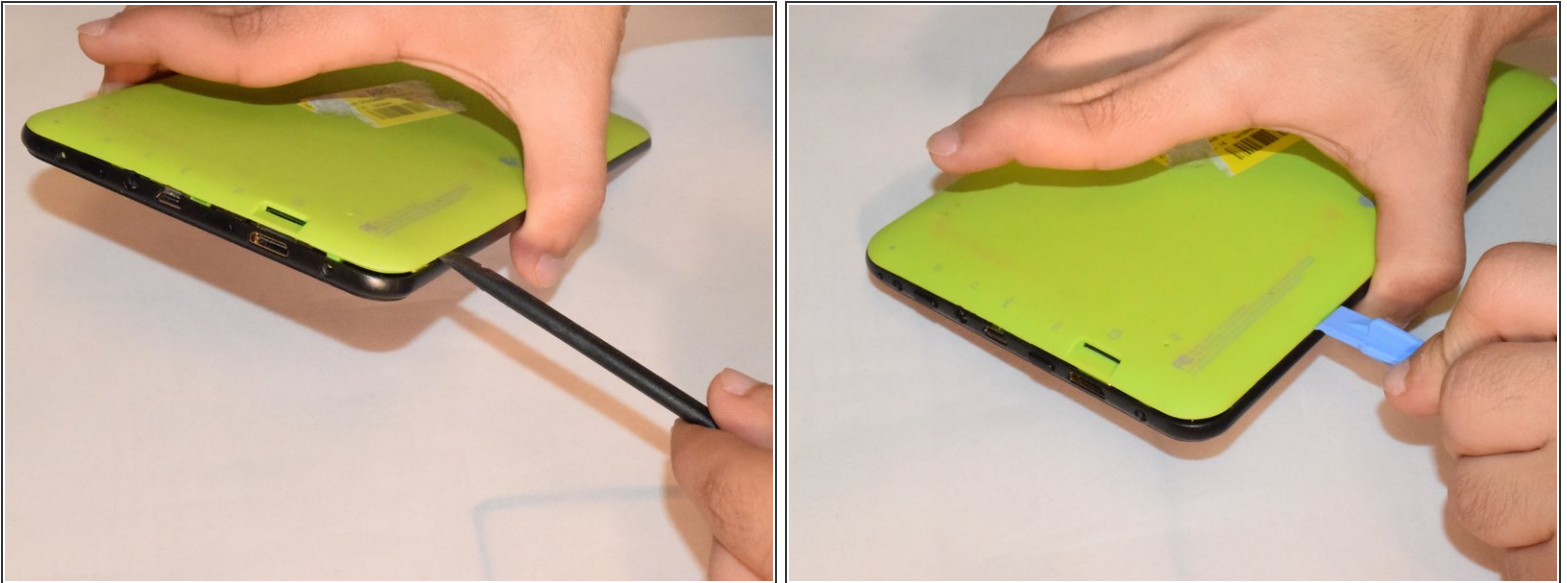
- [Spudger](#) (1)
 - [Phillips #0 Screwdriver](#) (1)
 - [Plastic Cards](#) (1)
 - [iFixit Opening Tools](#) (1)
-

Step 1 — Digitizer



- There are two screws on the side with the micro USB power port. Remove the two 2mm x 0.5mm screws with a Phillips #0 Screwdriver head.

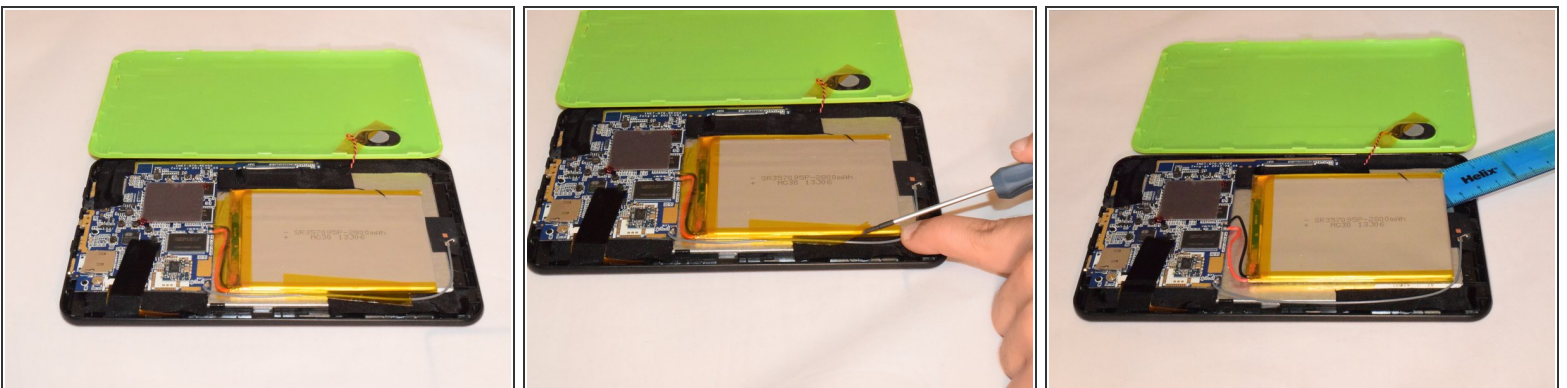
Step 2



- Pry off the plastic backing with the spudger and the plastic opening tools. Anything that can provide enough leverage and not conduct electricity will also work for this purpose.

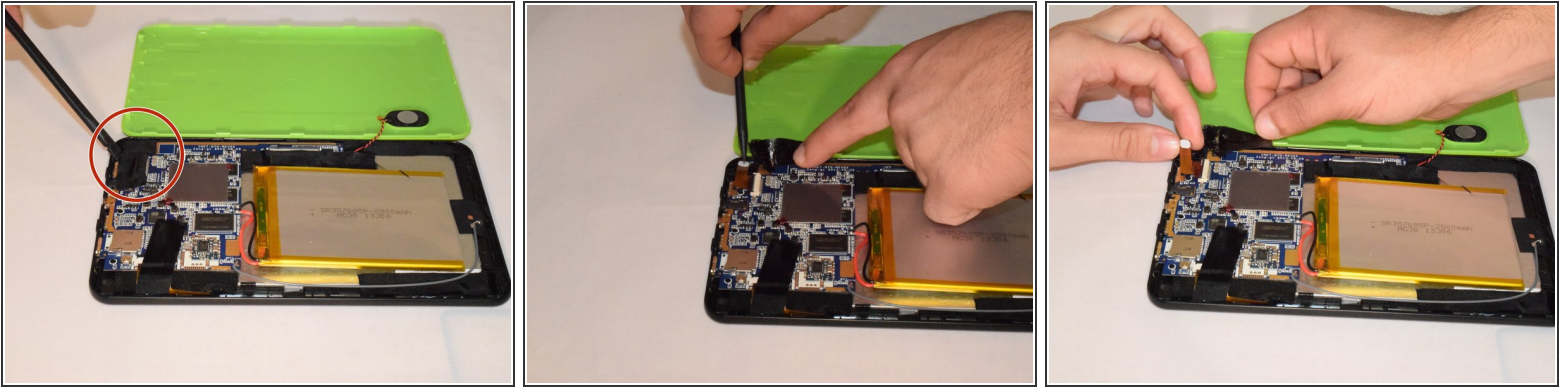
⚠ Carefully separate the front and back plates because the wire that connects the speaker is connected to both the front and back plates.

Step 3



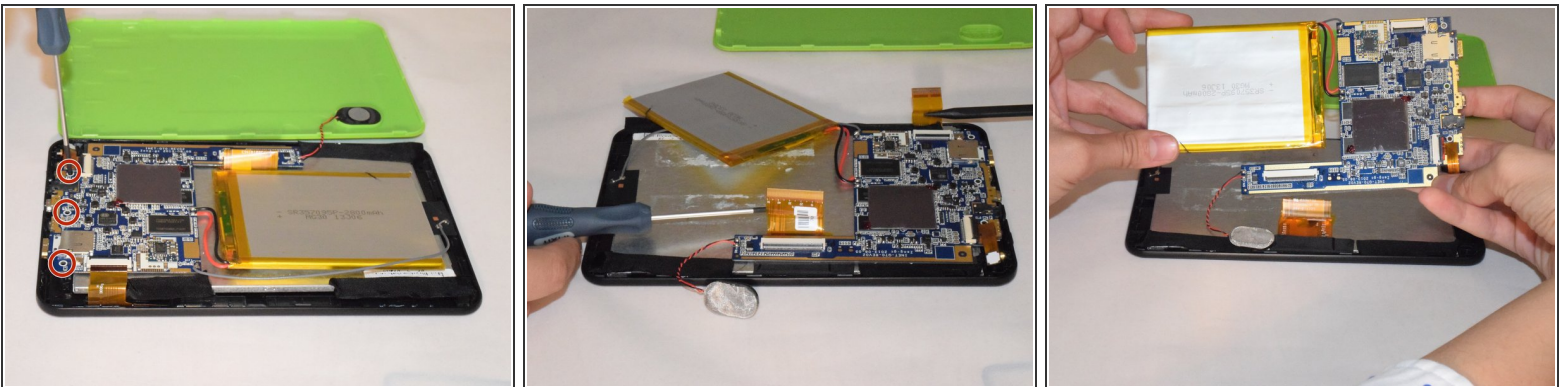
- Once you pry off the plastic backing, you will expose the battery and the motherboard.
- Remove the tape holding the battery to the plastic frame. The battery is glued to the back of the LCD.
- Pry the battery off the LCD using a flat and rigid piece of plastic, such as the plastic card.

Step 4



- Carefully remove the tape holding the camera in place as the camera is attached to the backing of the tape.
- Gently lift up the black lever that's holding the camera ribbon in place using a long piece of stiff plastic.
- Now, remove the camera from the device.

Step 5

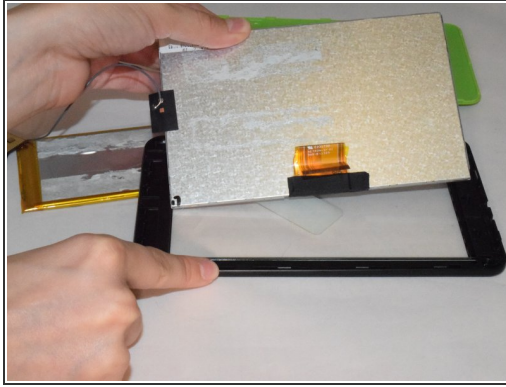
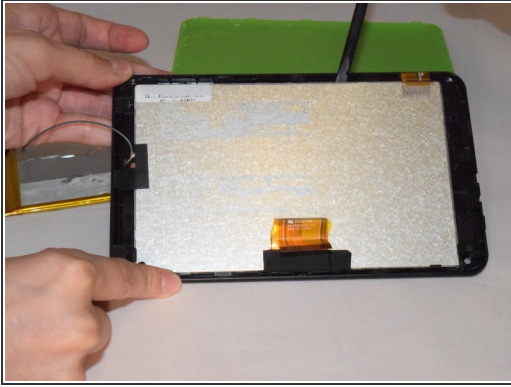


- Remove the three 2mm x 0.5mm screws with a Phillips #0 Screwdriver head from the motherboard.
- Carefully remove the motherboard from the LCD backing. Remove tape from the edges of the LCD.
- Carefully pry off the LCD with a piece of plastic.

 Carefully remove the motherboard, battery, and the speaker, so wires do not get disconnected.

This document was generated on 2019-09-30 08:49:42 AM (MST).

Step 6



- Now Protective Screen is removed and is ready to be replaced.

To reassemble your device, follow these instructions in reverse order.