



# Ematic Exp8 Battery Replacement

How to guide detailing how to remove and replace the battery from an Ematic Exp8 tablet.

Written By: Matthew Des Jardins



---

## INTRODUCTION

The Ematic EXP8 was released by Ematic in September of 2012 as an entry level tablet with a 9.7 inch screen.

---

### TOOLS:

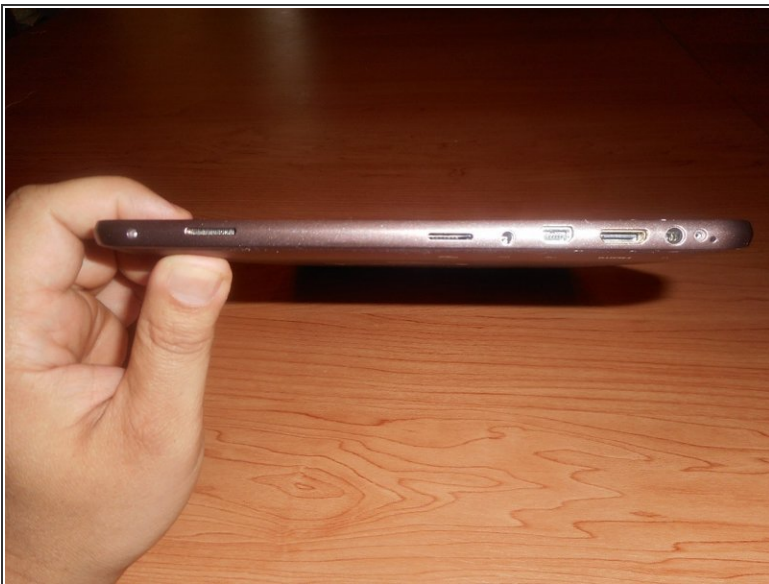
- [iFixit Opening Tools](#) (1)
  - [Phillips #000 Screwdriver](#) (1)
  - [Soldering Iron](#) (1)
-

## Step 1 — Battery



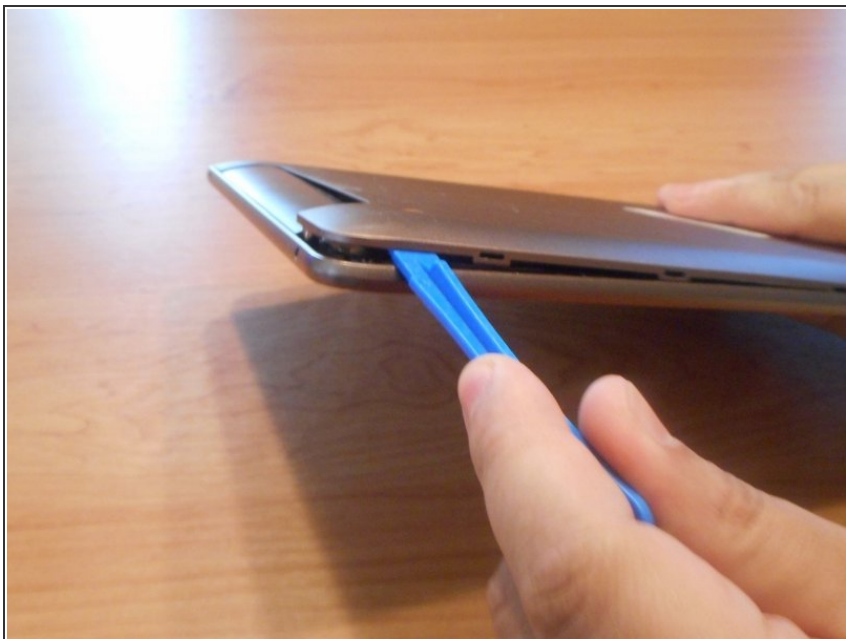
- Place the device on a firm, flat surface. Be sure to have adequate room for putting aside tools, small parts etc.

## Step 2



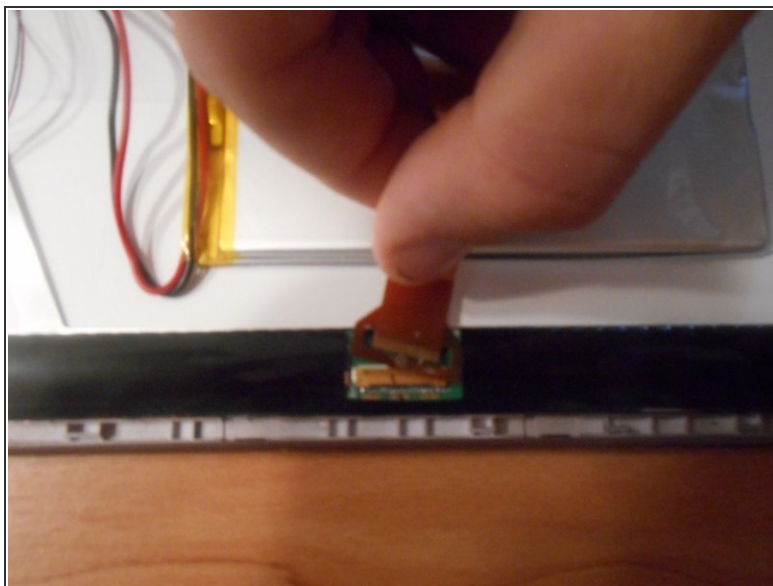
- Rotate the device and examine the sides. Remove all four 4mm screws with a screwdriver.

### Step 3



- Gently wedge a prying tool under the back panel cover, releasing it from the latches inside.

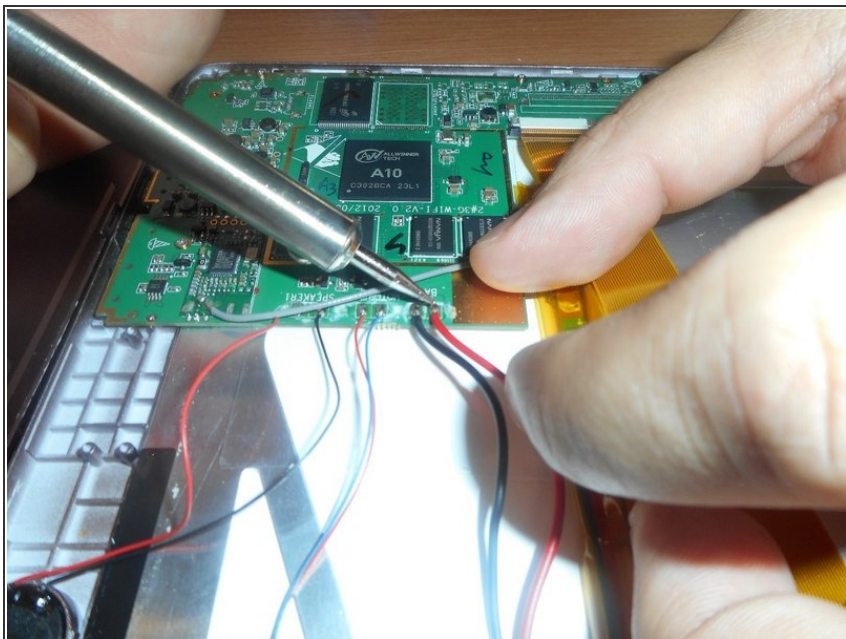
### Step 4



- Remove the cable (yellow) from over the top of the battery by gently unhooking at it's insertion.



## Step 5



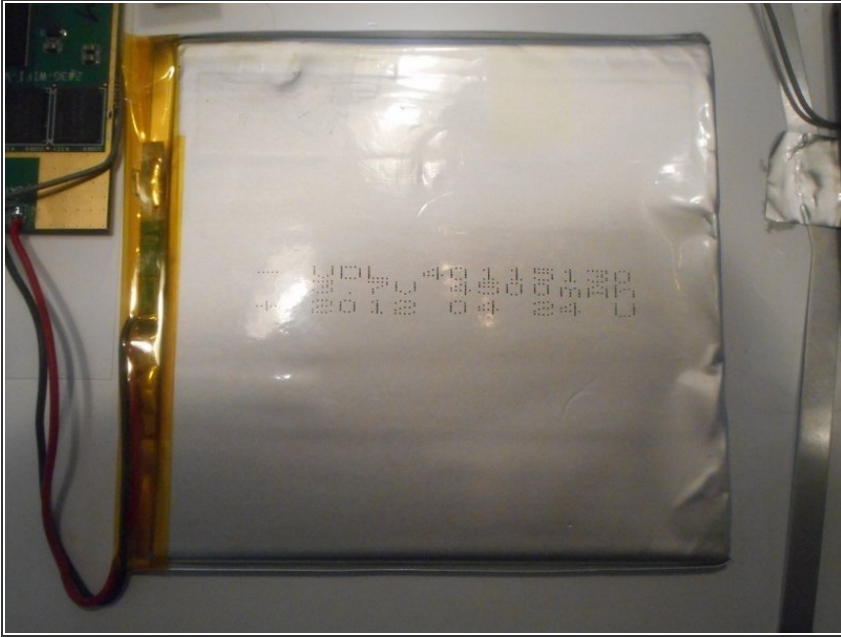
- Remove the positive and negative battery cables by using a soldering gun.

## Step 6



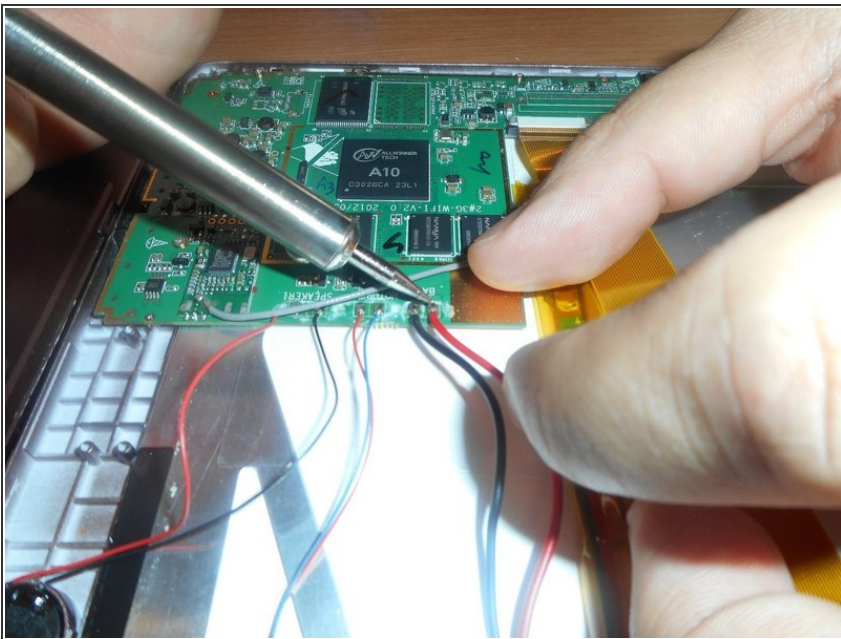
- Use a prying tool to carefully dislodge the battery from the adhesive on it's under-side. Discard faulty battery.

## Step 7



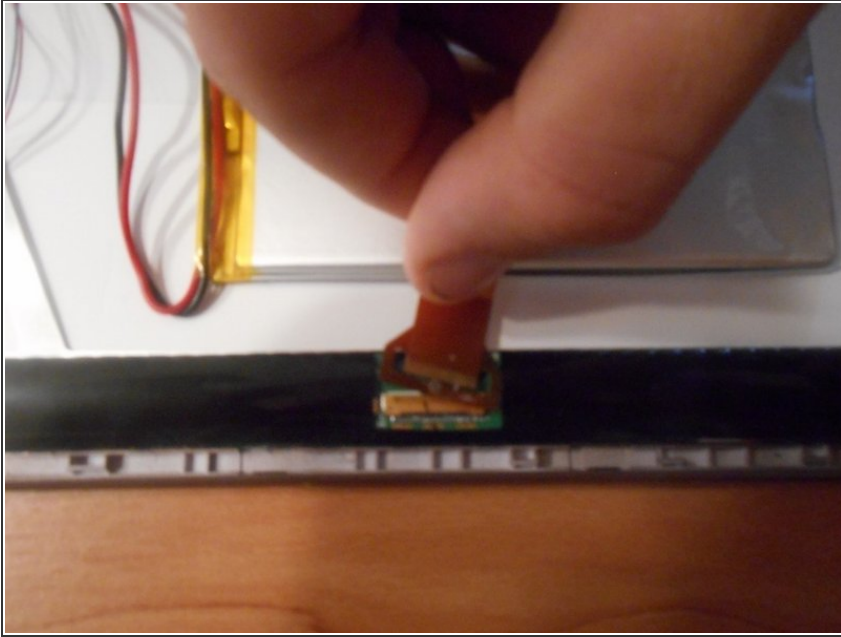
- Place new battery in the same position as the old one. Additional adhesive may be required to ensure the battery will not move.

## Step 8



- Using a soldering tool, connect the new positive and negative cables to their appropriate places on the motherboard.

## Step 9



- Re-connect yellow cable over the top of the battery to it's insertion point.

To reassemble your device, follow these instructions in reverse order.