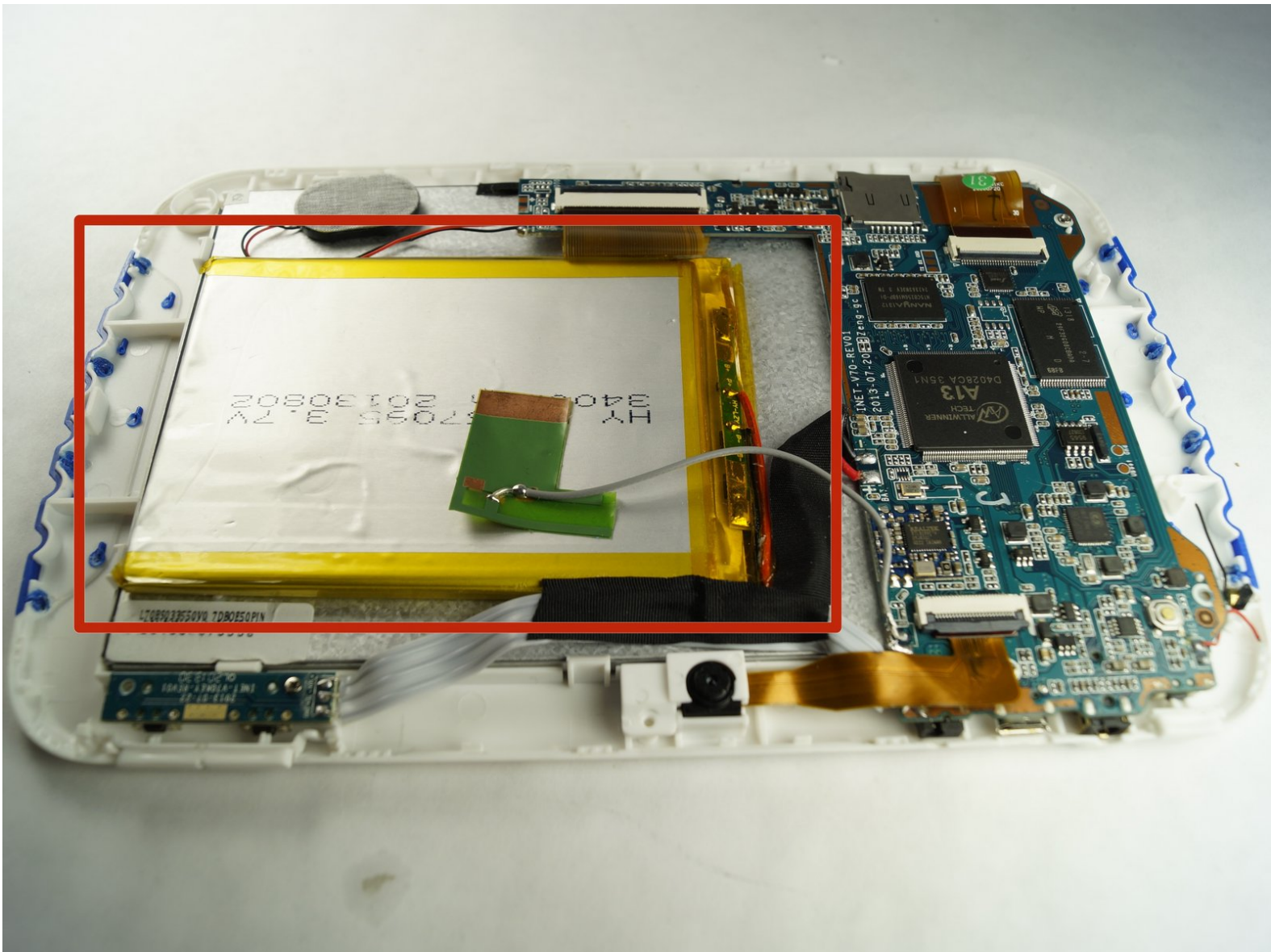




# Ematic Funtab FTABXXX Battery Replacement

This guide will show you how to replace a speaker step by step.

Written By: Robert Zarobinski



---

# INTRODUCTION

Following our troubleshooting guide, you have diagnosed that you have a defective battery.

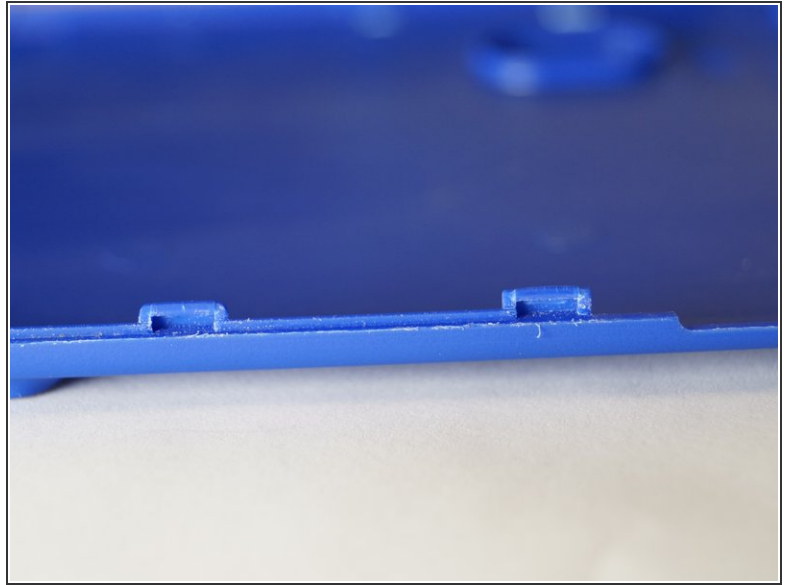
---



## TOOLS:

- [Soldering Iron](#) (1)
  - [Solder](#) (1)
  - [iFixit Opening Tools](#) (1)
-

## Step 1 — Battery



- First, be sure to power off the device.
- Carefully pry open the device. Note the plastic tabs in the image that hold the device together.

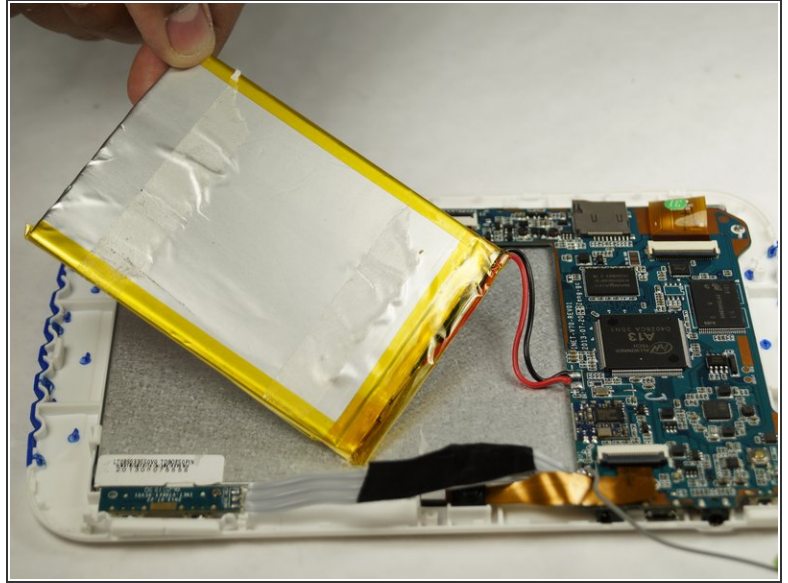
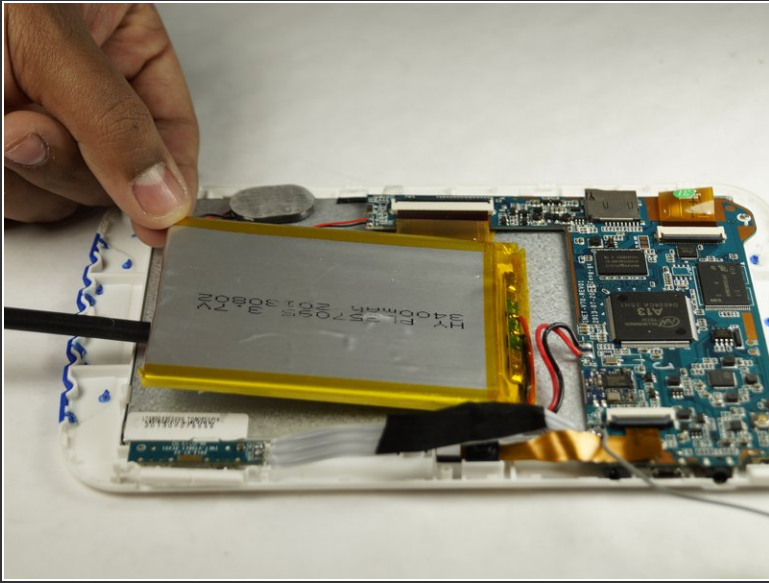
## Step 2



- Locate the battery. Generally located in the middle of the device.

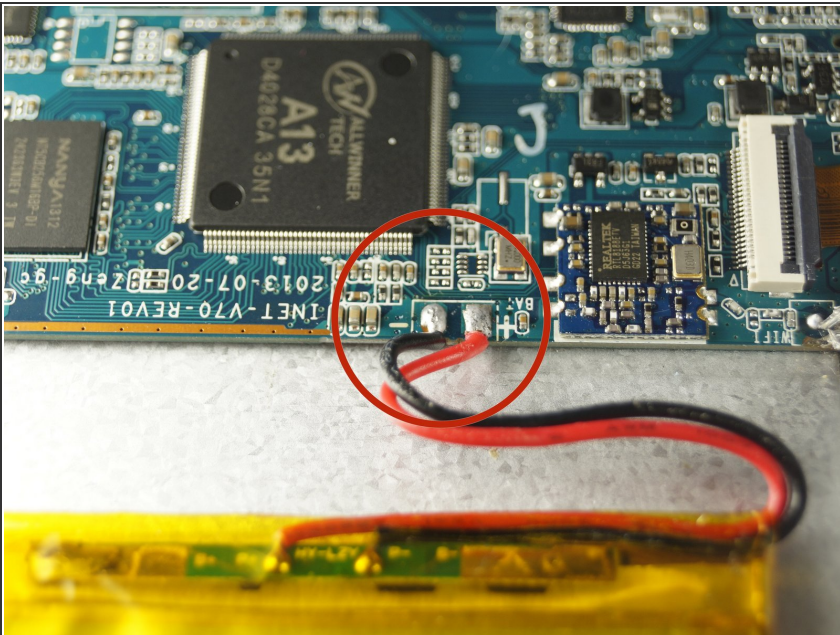


### Step 3



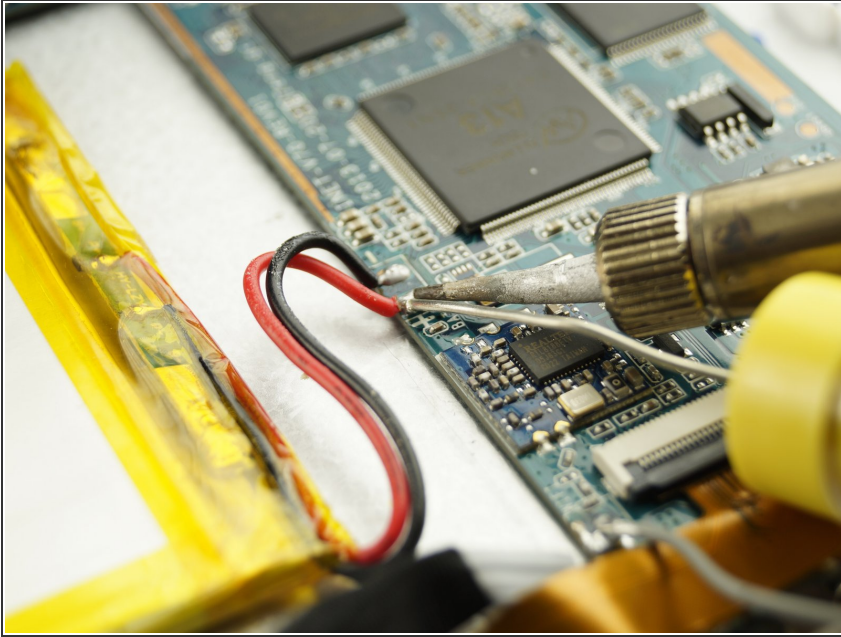
- Carefully pry off the battery from the display screen. This will be slight difficult since the battery is held onto the back of the display by adhesive.

### Step 4



- Locate the red and black wire that runs from the battery and to the motherboard. Note the location of the wires, and carefully remove the soldered wires.

## Step 5



- Attach the new battery to the same location as the old battery via adhesive.
- Then, carefully solder the red wire to the '+' symbol on the motherboard and the black wire to the '-' symbol.

## Step 6



- Once the solder has cooled, snap the front and back bezels together. Be sure to charge the new battery.

To reassemble your device, follow these instructions in reverse order.