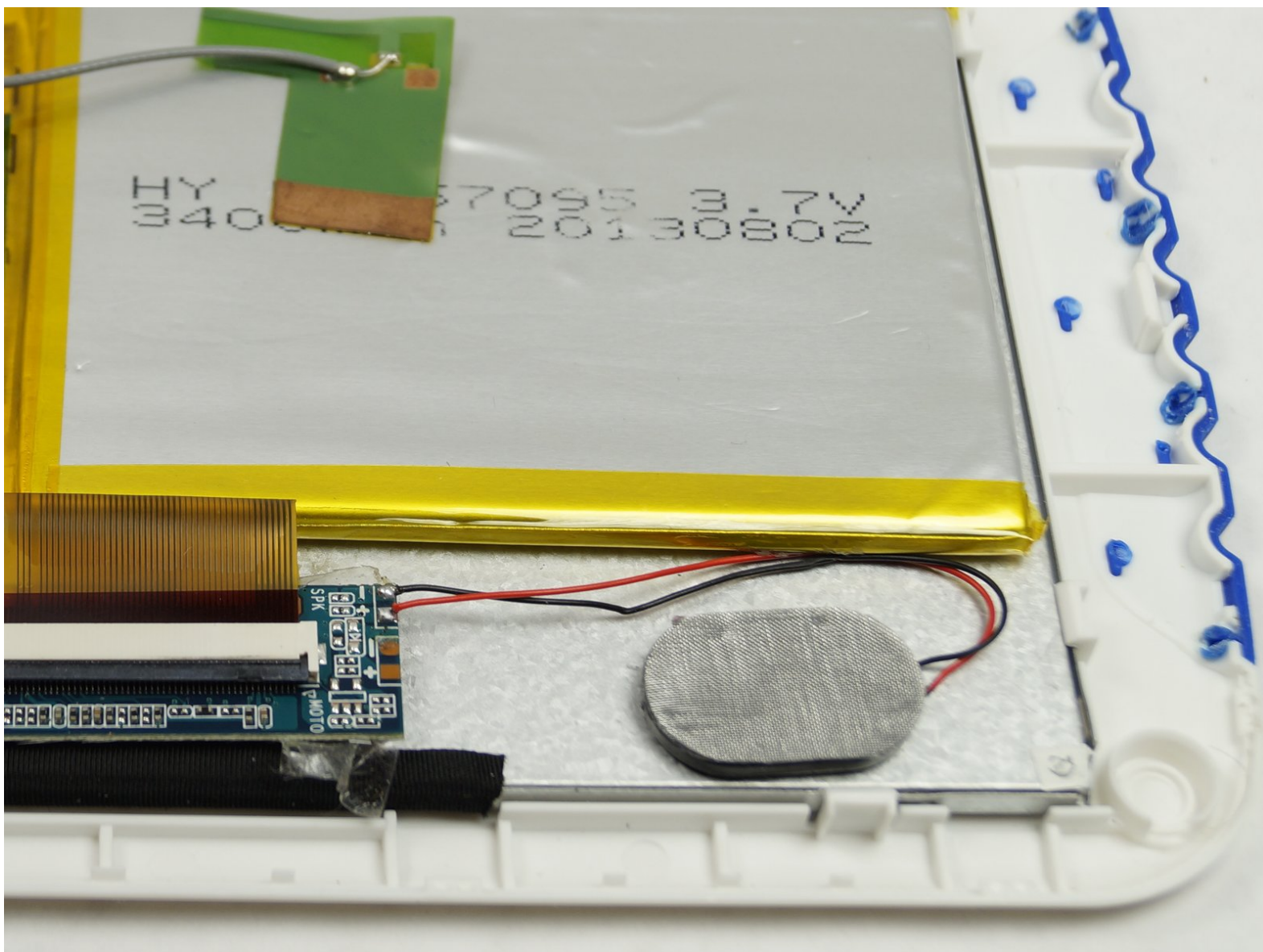




# Ematic Funtab FTABXXX Speaker Replacement

In the case of a faulty speaker, this guide will take you step by step on how to replace the speaker properly.

Written By: Robert Zarobinski



# INTRODUCTION

Following our troubleshooting page, you have diagnosed the problem to be a defective speaker.



## TOOLS:

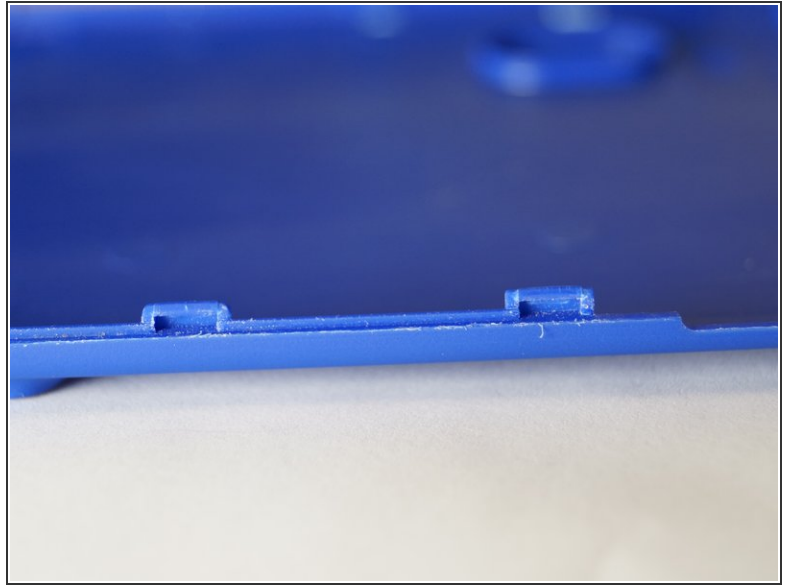
- [Soldering Iron](#) (1)
- [Solder](#) (1)
- [iFixit Opening Tools](#) (1)



## PARTS:

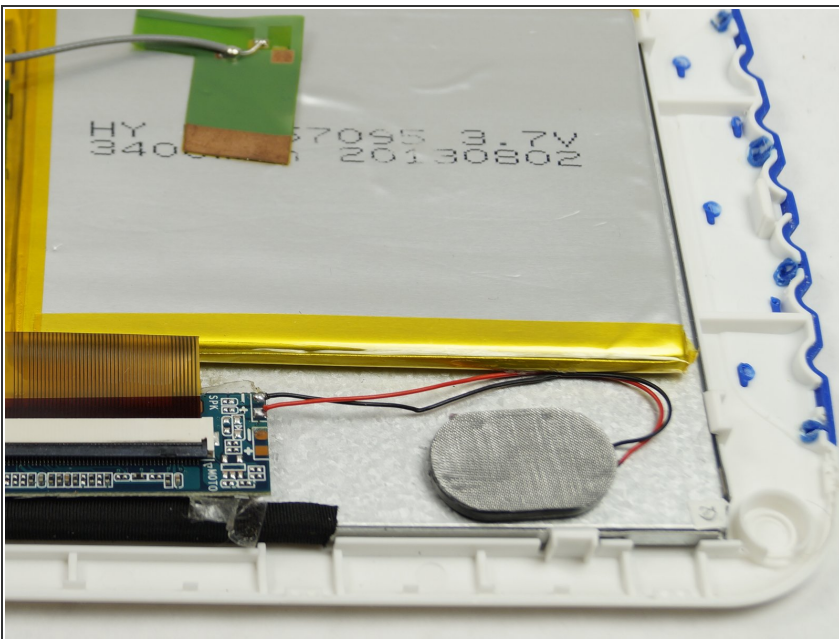
- [New speaker](#) (1)

## Step 1 — Opening the Device



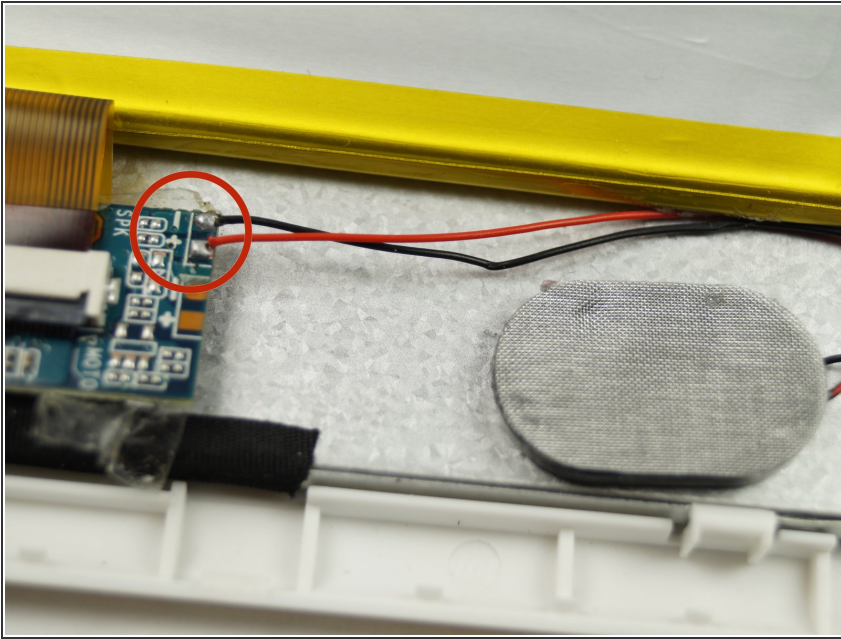
- First, be sure to power off the device.
- Carefully pry open the device. Note the plastic tabs in the image that hold the device together.

## Step 2 — Locating the speaker



- Locate the speaker in the bottom right hand side of the device. Note the red and black wires attaching the speaker to the motherboard.

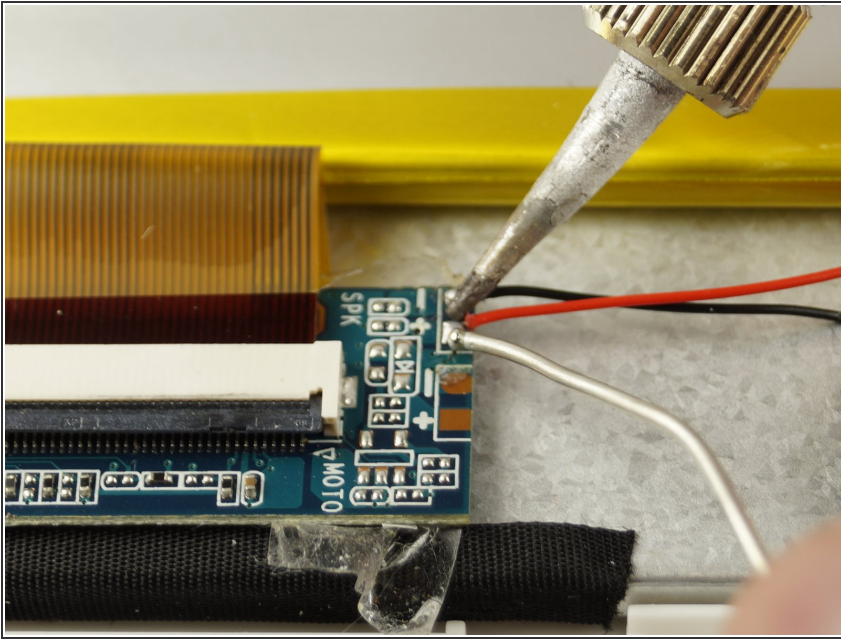
### Step 3 — Removing the old speaker



- Carefully remove the soldered wires from the motherboard. Note the positive and negative symbol where the red and black wires are soldered to on the motherboard.

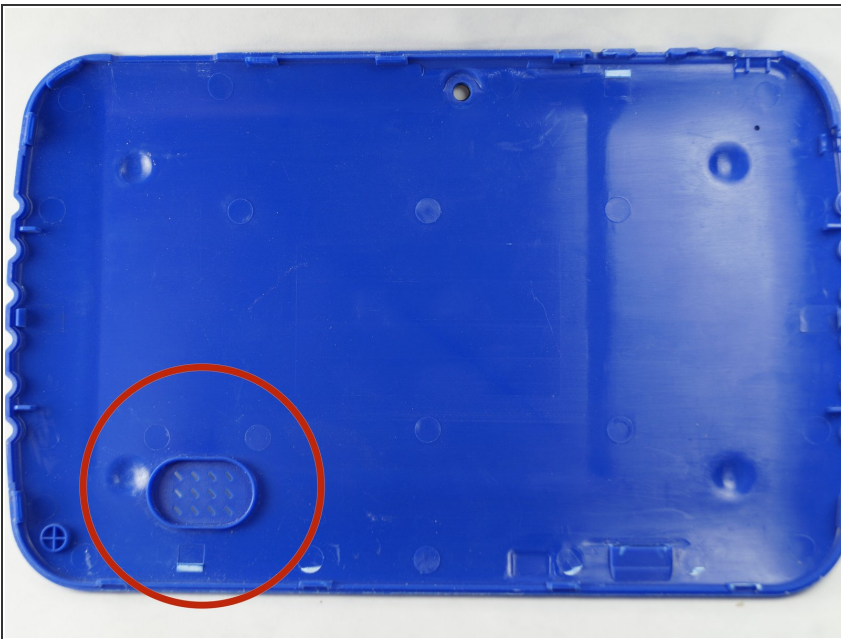


## Step 4 — Soldering the new speaker



- Carefully, solder the new speaker wires to the motherboard in the same fashion as the old speaker. The red wire to the '+' symbol and the black wire to the '-' symbol.

## Step 5 — Positioning the speaker



- Once the solder points have cooled, position the speaker into the speaker housing on the back bezel as shown in the image.

To reassemble your device, follow these instructions in reverse order.