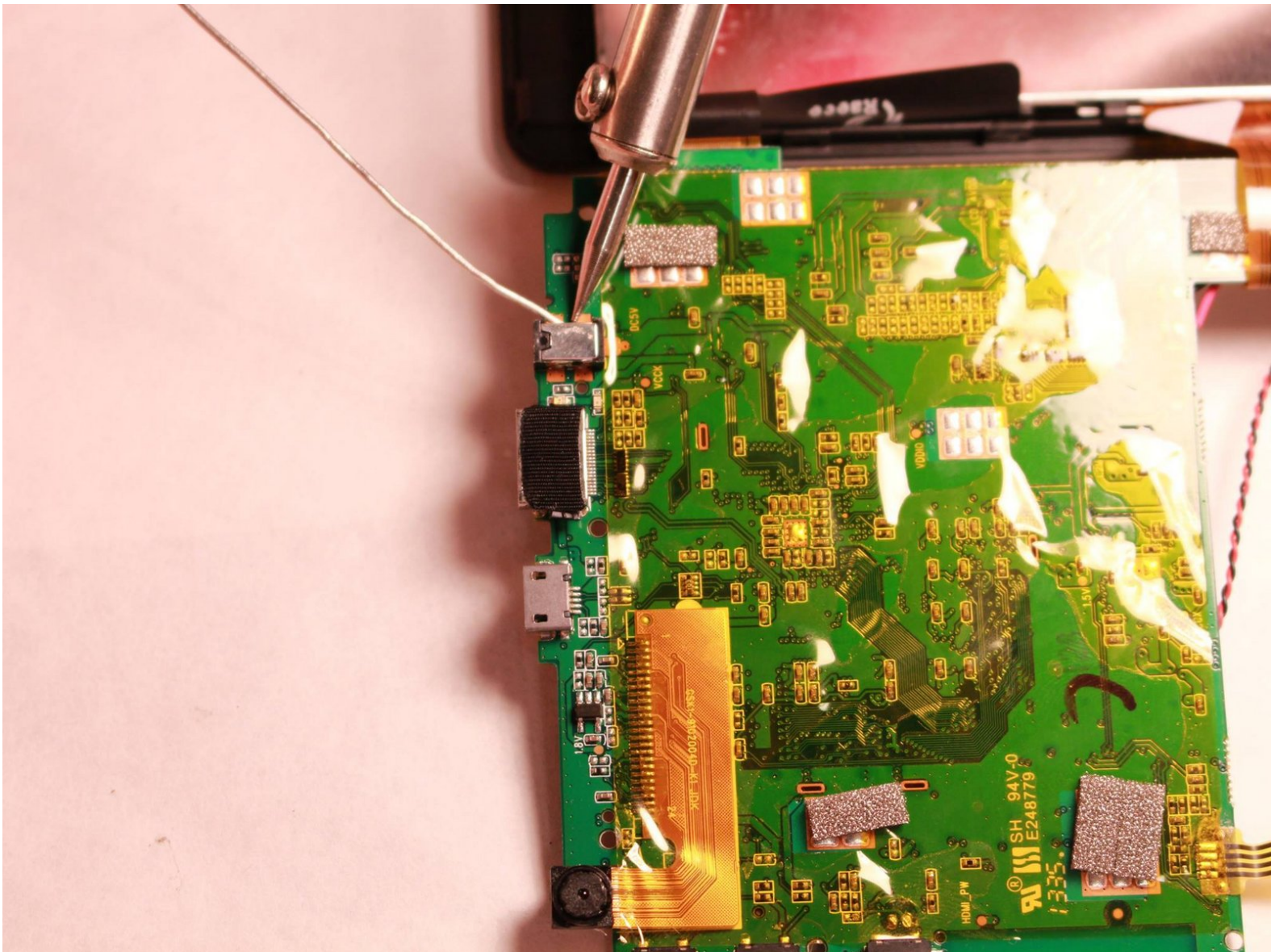




Ematic Genesis 2 Charging Port Replacement

Follow this guide to replace the charging port in the Ematic Genesis 2 tablet.

Written By: Alexandria Ehrnsberger



INTRODUCTION

This repair guide will teach you how to replace the charging port in the Ematic Genesis 2 tablet.



TOOLS:

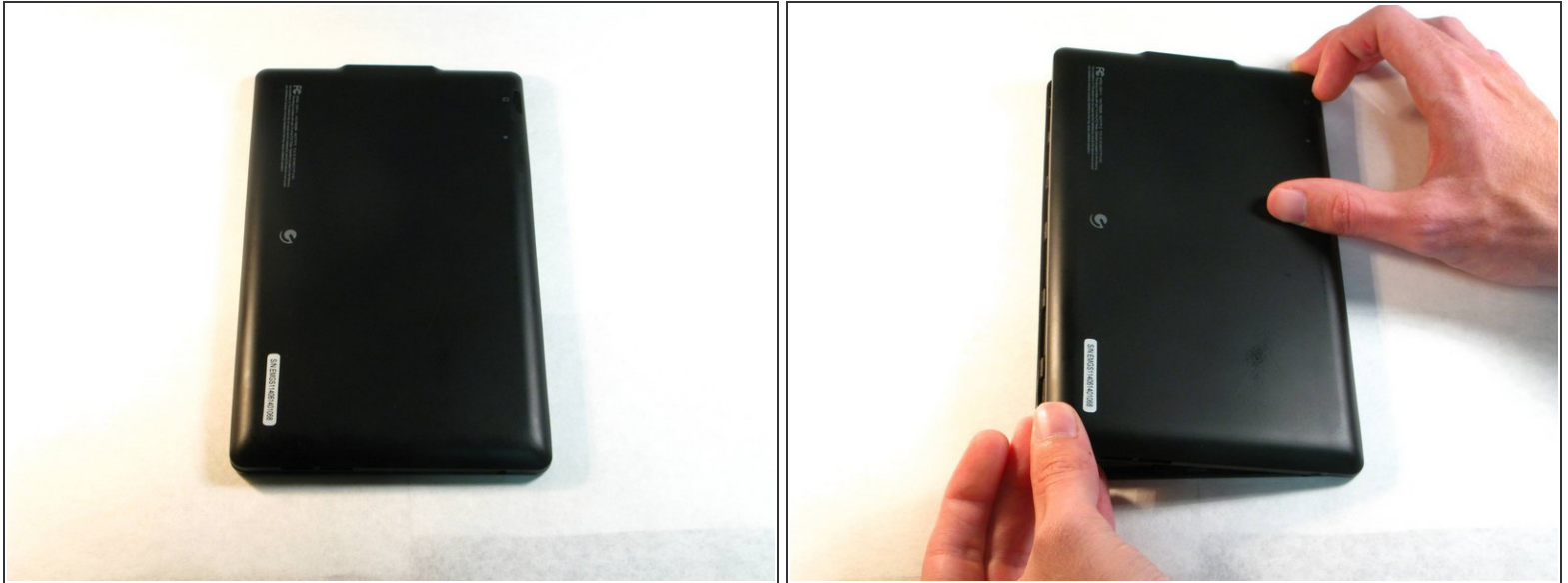
- [Phillips #00 Screwdriver](#) (1)
- [Metal Spudger](#) (1)
- [Soldering Iron](#) (1)



PARTS:

- [Ematic 2 Charging Port](#) (1)

Step 1 — Charging Port



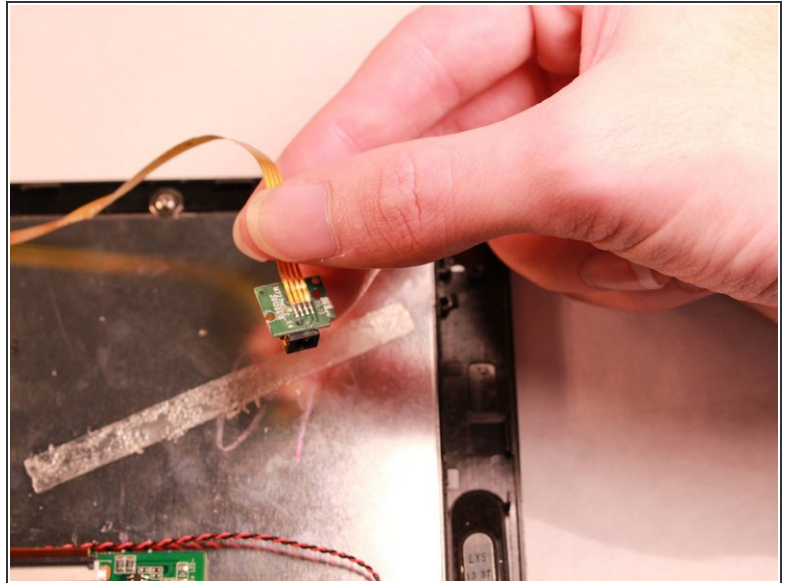
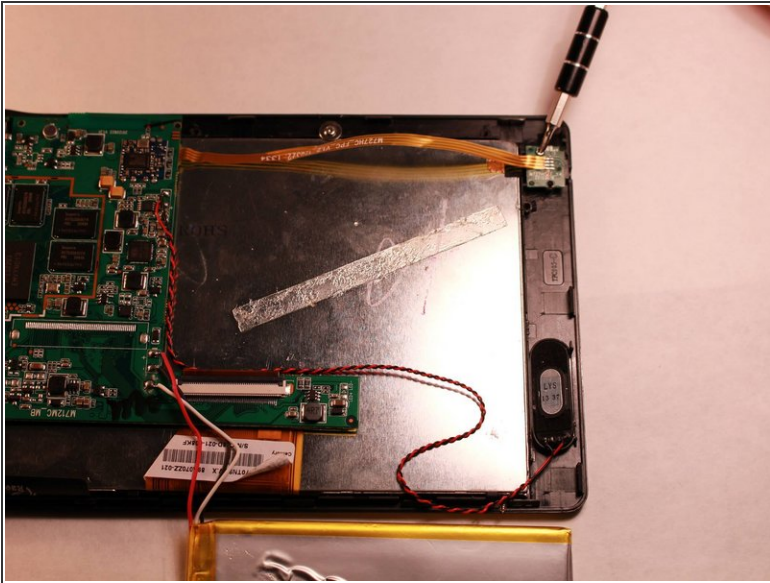
- With your fingers, carefully pry off the back plastic casing. Starting at the corners is usually the easiest.

Step 2



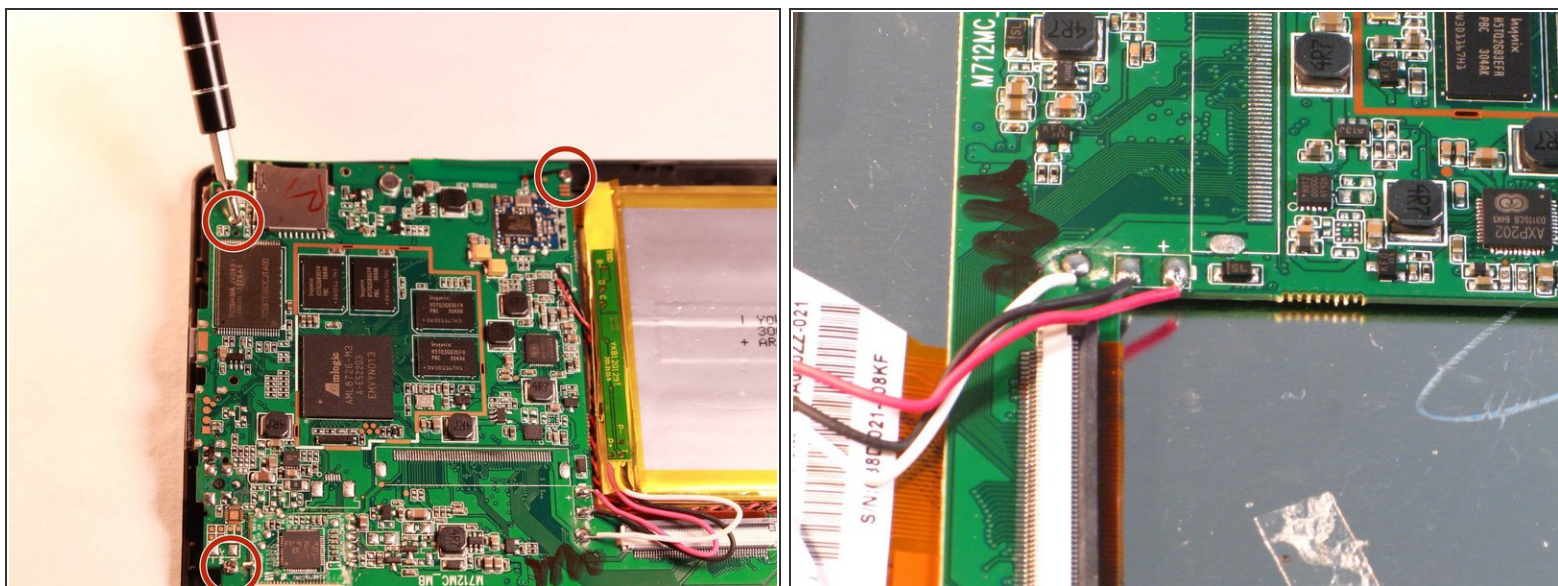
- Remove all four screws surrounding the battery with the Phillips head screwdriver.
- Carefully remove the battery from the device using the Metal Spudger tool to gently separate the battery by wedging it between the device and the battery.

Step 3



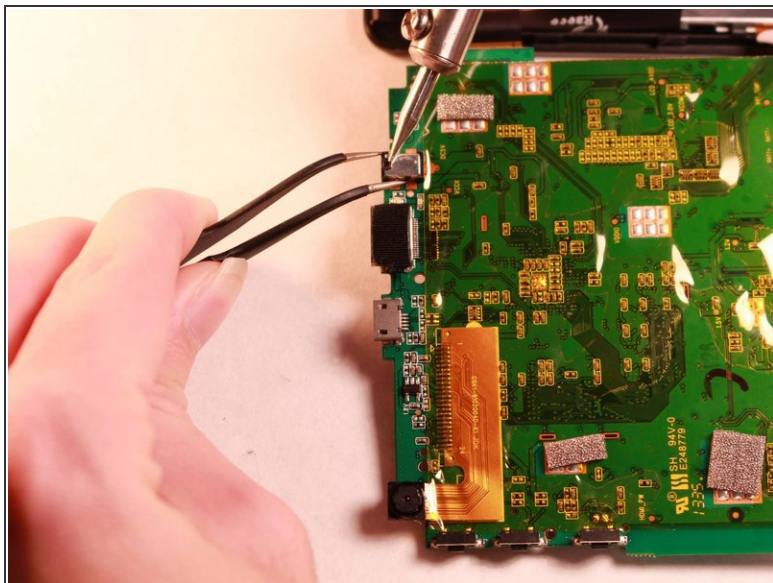
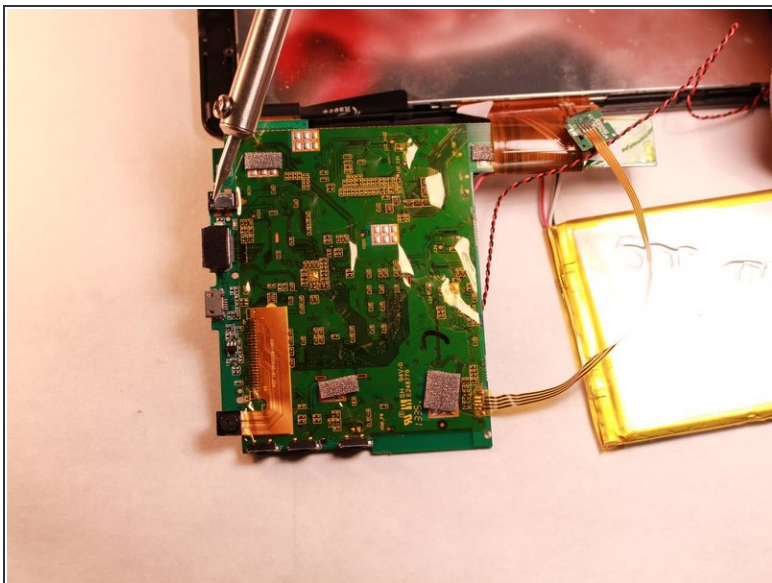
- Remove both screws on either side of the audio jack using the Philips head screwdriver.
- Detach audio jack from device.

Step 4



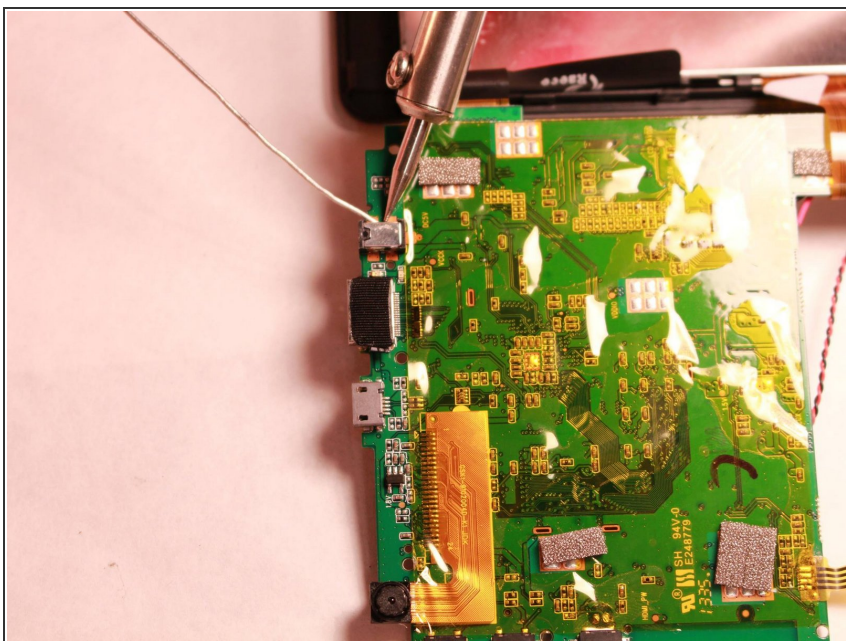
- Remove the 3 screws surrounding the circuit board using the Philips head screwdriver.
- Carefully disconnect the circuit board from the device by detaching the copper flexible PCB ribbon cable.

Step 5



- Use a soldering iron to heat the solder holding the charging port to the circuit board.
- Remove the charging port from board using tweezers.

Step 6



- Solder replacement port into place.
- ⓘ Make sure all connections match original.

To reassemble your device, follow these instructions in reverse order.