



Ematic Model FTABMP2 Camera Replacement

This guide will show you how to replace the camera on the Ematic Model FTFABMP2.

Written By: Timothy





TOOLS:

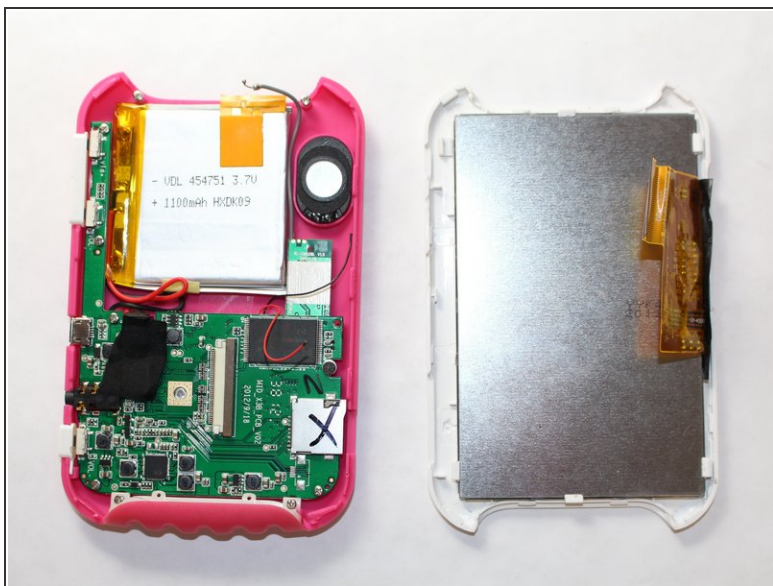
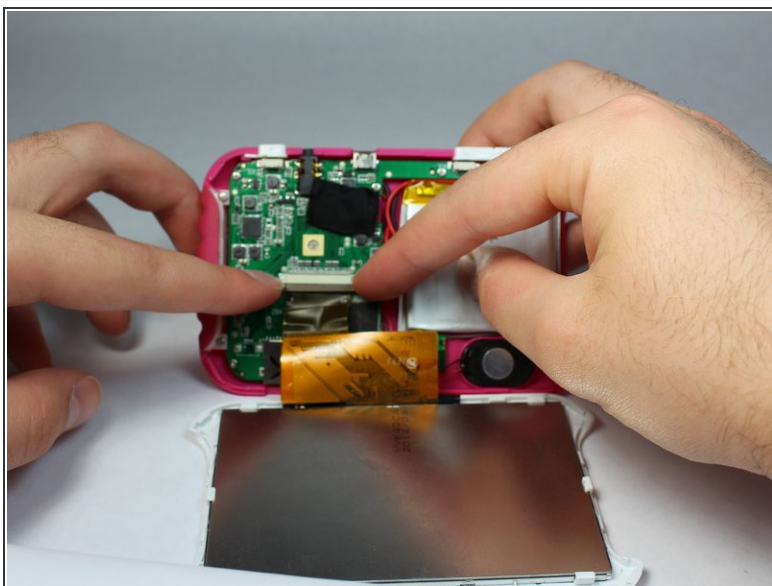
- [iFixit Opening Tools](#) (1)
-

Step 1 — Camera



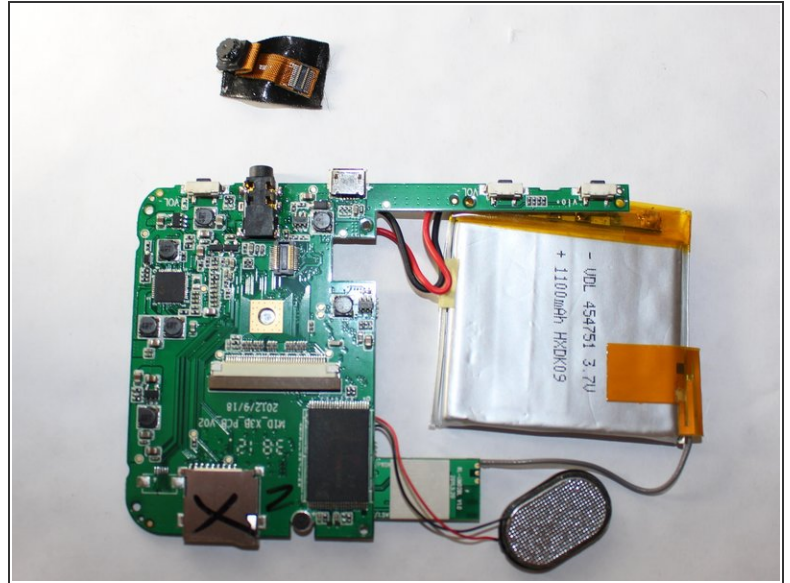
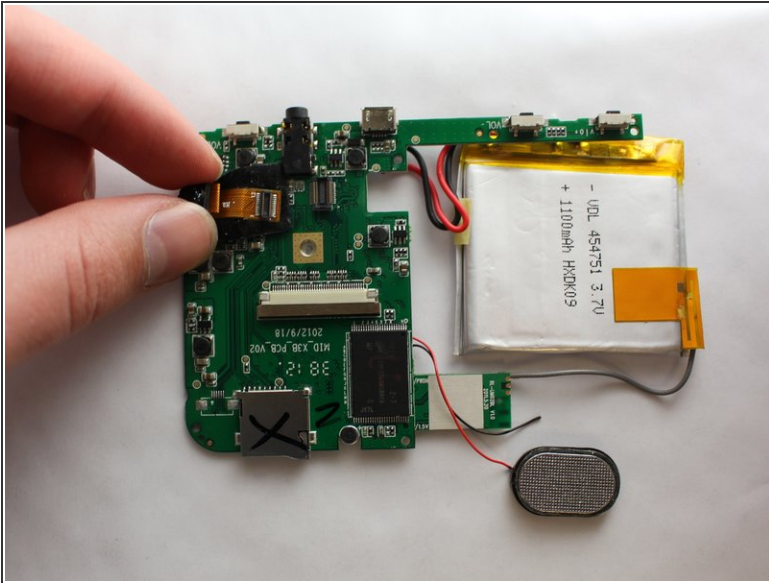
- Use a spudger to pry open the case of your device to reveal the inside.

Step 2



- Disconnect the LCD cable from the motherboard by pressing together the two sides of the clamp to separate the device into two.

Step 3



- On the half with the motherboard, there is a piece of fabric that houses the camera and it's cable attaching it to the motherboard. To remove the camera, simply peel back the black piece of fabric (as the camera and it's cable are attached to the fabric via glue).

To reassemble your device, follow these instructions in reverse order.