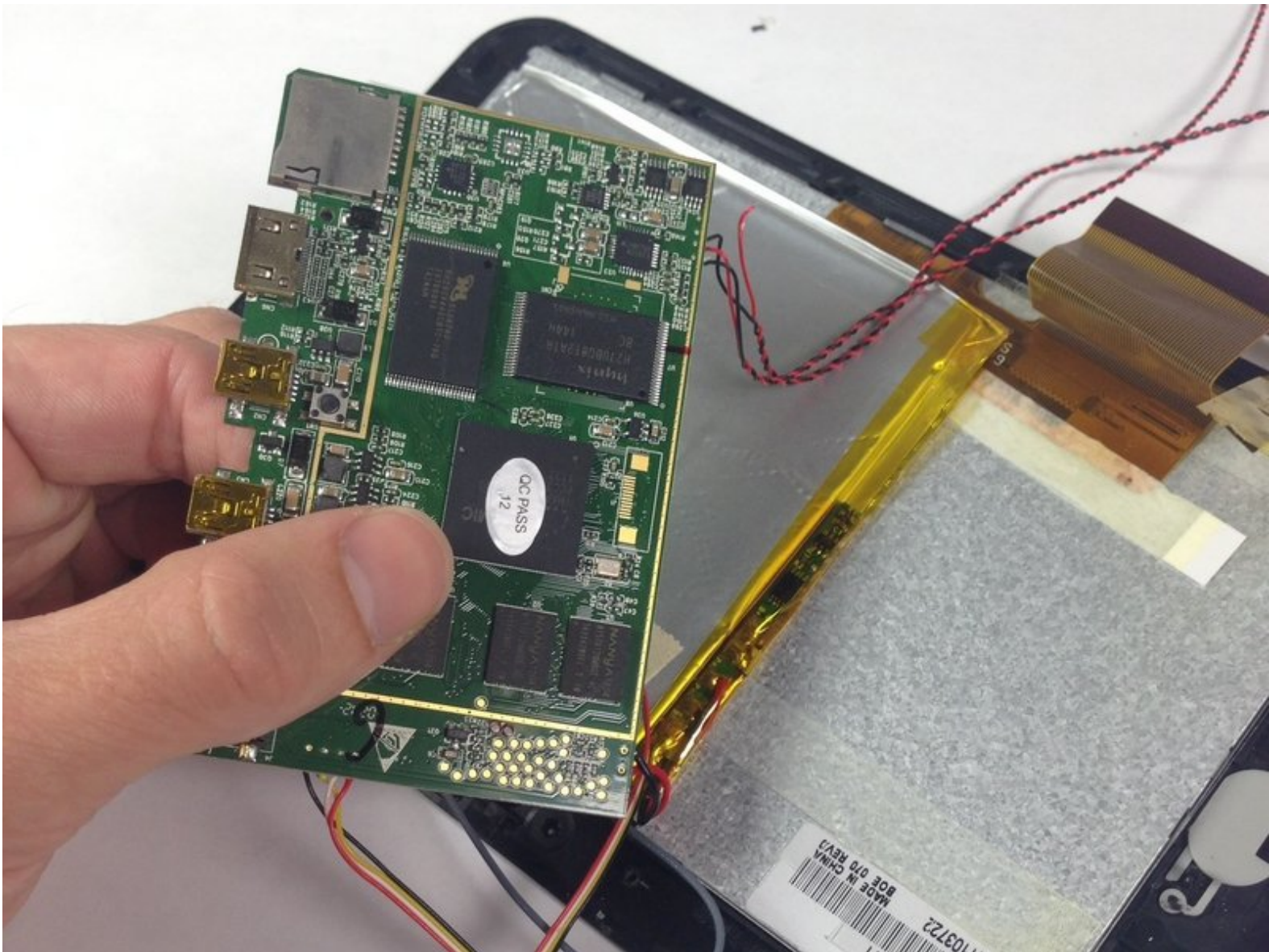




Ematic eGlide 4 Motherboard Replacement

This guide will help you replace the motherboard in your Emetic eGlide 4.

Written By: Bailey Hughes



INTRODUCTION

The motherboard controls the entire device and commands the device to work properly. The motherboard is the house for all different device commands. This guide will help users access the motherboard by removing connected parts. To access the motherboard some surrounding parts must also be removed by disconnecting ribbon wires.



TOOLS:

- [Phillips #00 Screwdriver](#) (1)
- [Spudger](#) (1)
- [Soldering Workstation](#) (1)



PARTS:

- [Ematic eGlide 4 Motherboard](#) (1)

Step 1 — Rear Panel



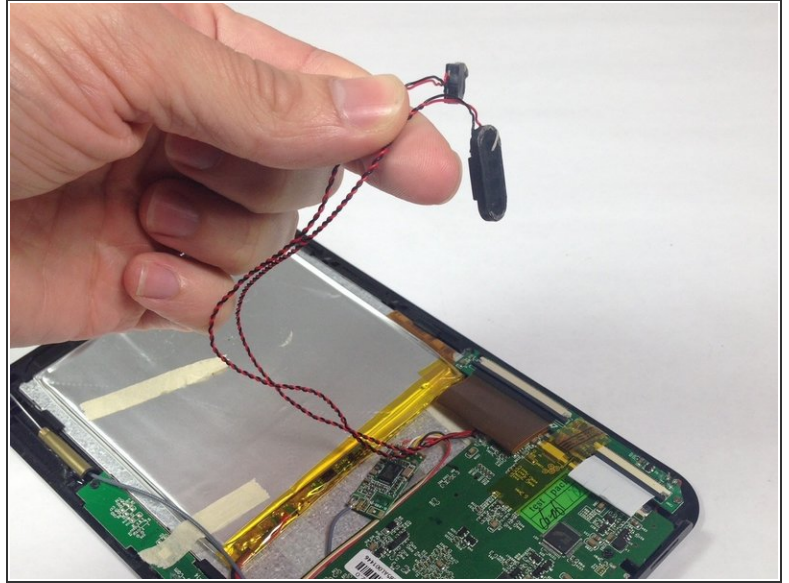
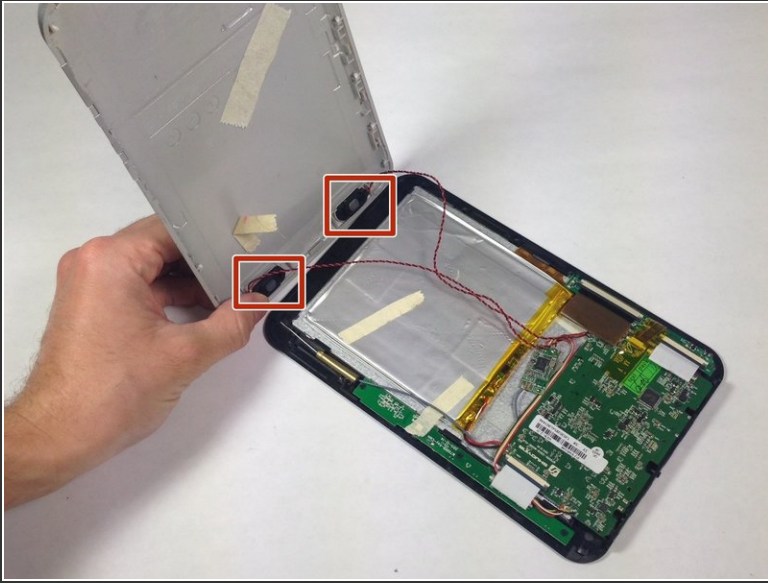
- Remove the 4.6mm Phillips #00 screw at the base of the device.

Step 2



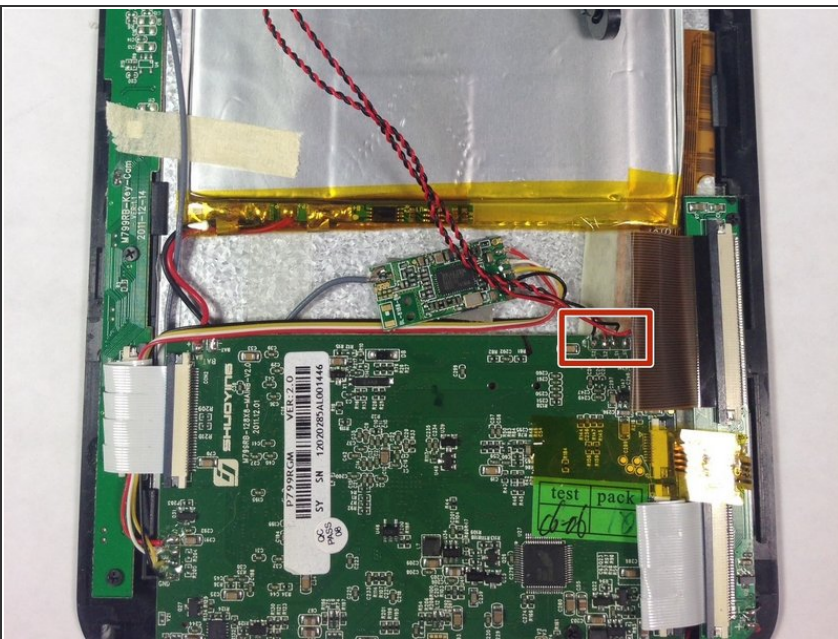
- Slide the rear panel away from the base parallel to the screen.

Step 3



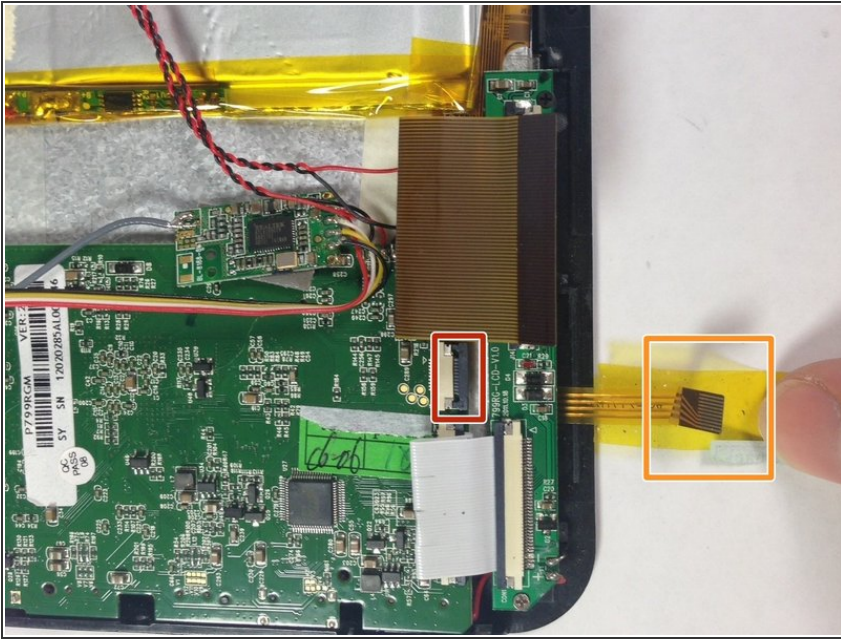
- Carefully remove the speakers from the rear panel.
- Pull the speakers off of the rear panel.

Step 4 — Speaker



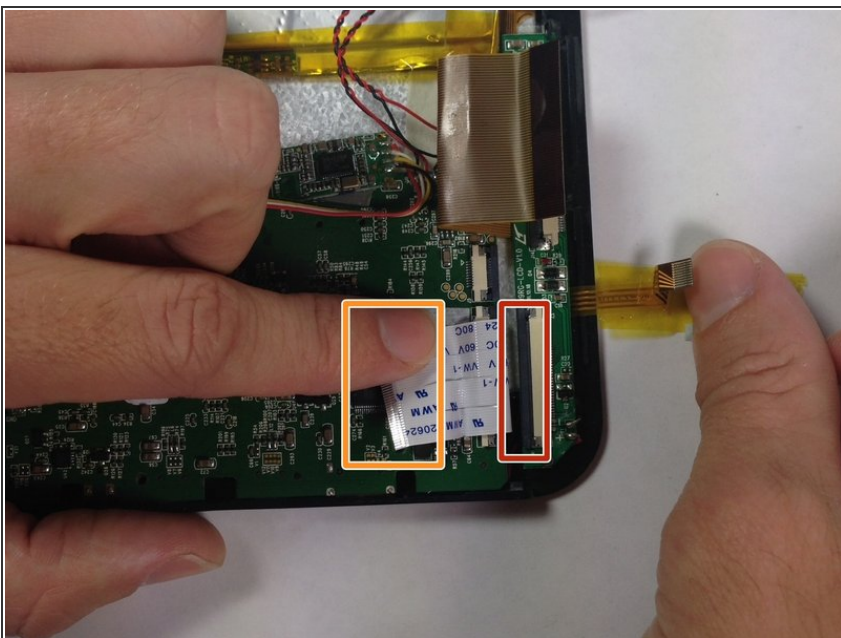
- Desolder the 4 speaker wire connections.
- ① See ifixit's guide to soldering and desoldering for help: [How to Solder and Desolder Connections](#)

Step 5 — Motherboard



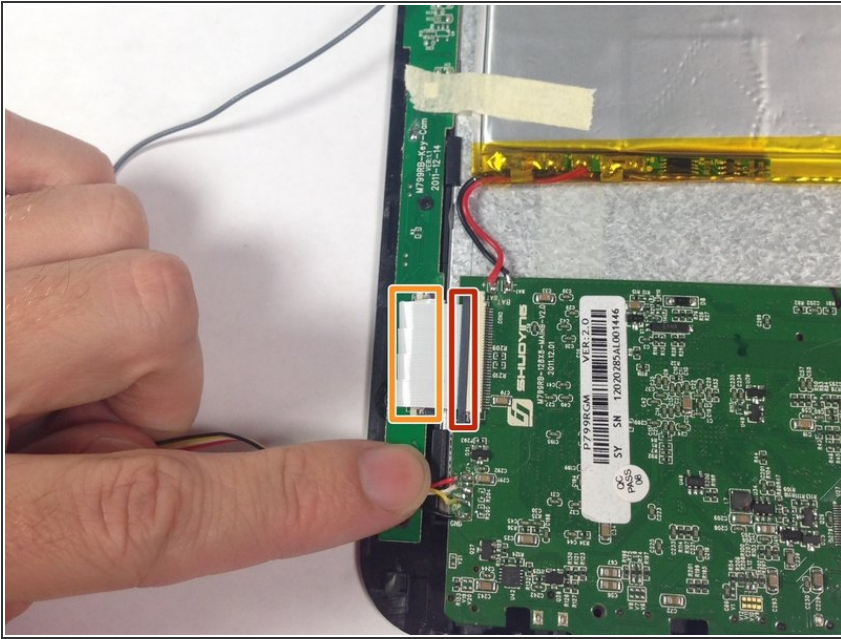
- Slide the grey ribbon wire connector clip away from the ribbon wire port on the motherboard using the pointed tip of a spudger.
- ⓘ You do not need to fully disconnect the ribbon wire clip from the ribbon wire port: the clip will stay attached in a loose fit.
- Remove the gold ribbon wire from the ribbon wire port on the motherboard.

Step 6



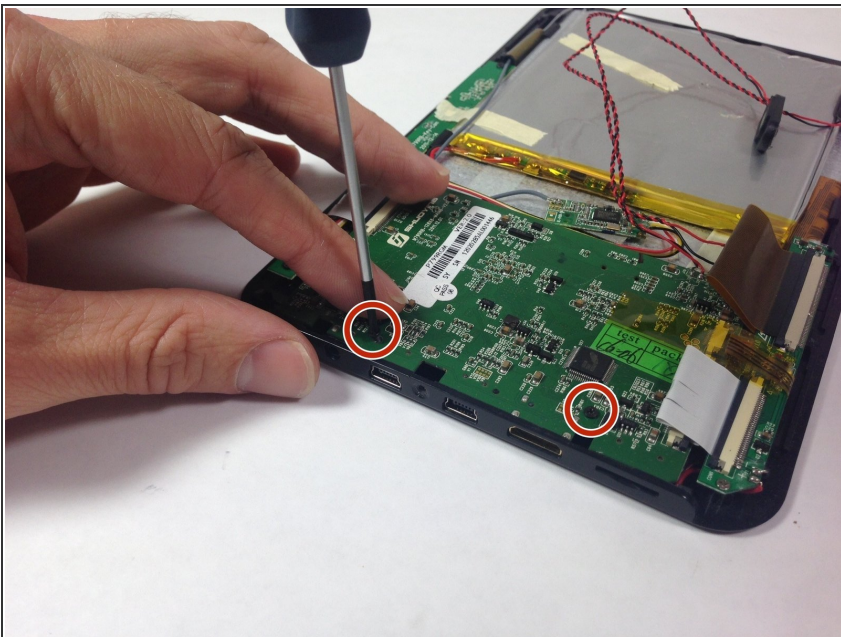
- Slide the grey ribbon wire connector clip away from the white ribbon wire port on the screen board using the pointed tip of a spudger.
- ⓘ You do not need to fully disconnect the ribbon wire clip from the ribbon wire port: the clip will stay attached in a loose fit.
- Remove the ribbon wire from the ribbon wire port on the screen board.

Step 7



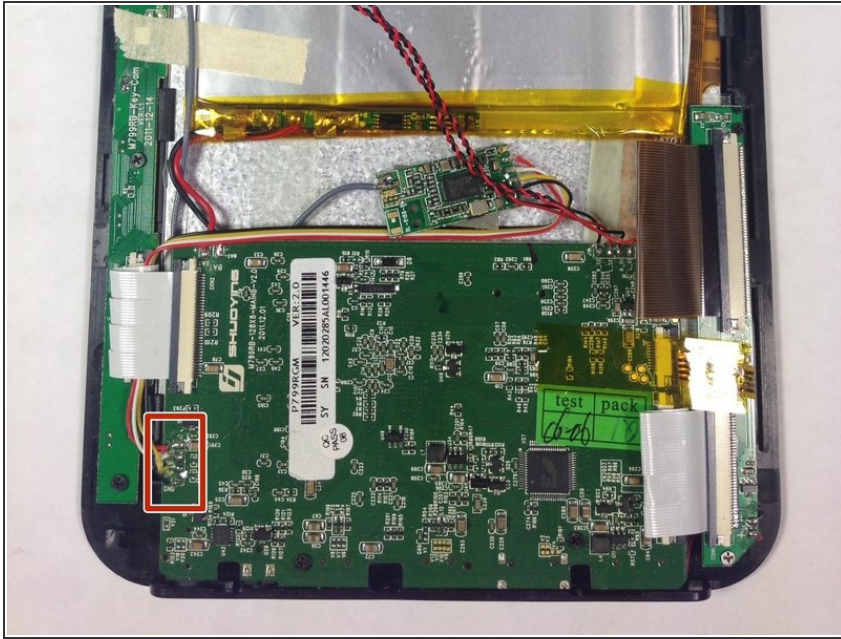
- Slide the grey ribbon wire connector clip away from the ribbon wire port using the pointed tip of a spudger.
- ⓘ You do not need to fully disconnect the ribbon wire clip from the ribbon wire port: the clip will stay attached in a loose fit.
- Remove the ribbon wire from the ribbon wire port.
- ⓘ If you have already removed the side button array you do not need to do this step.

Step 8



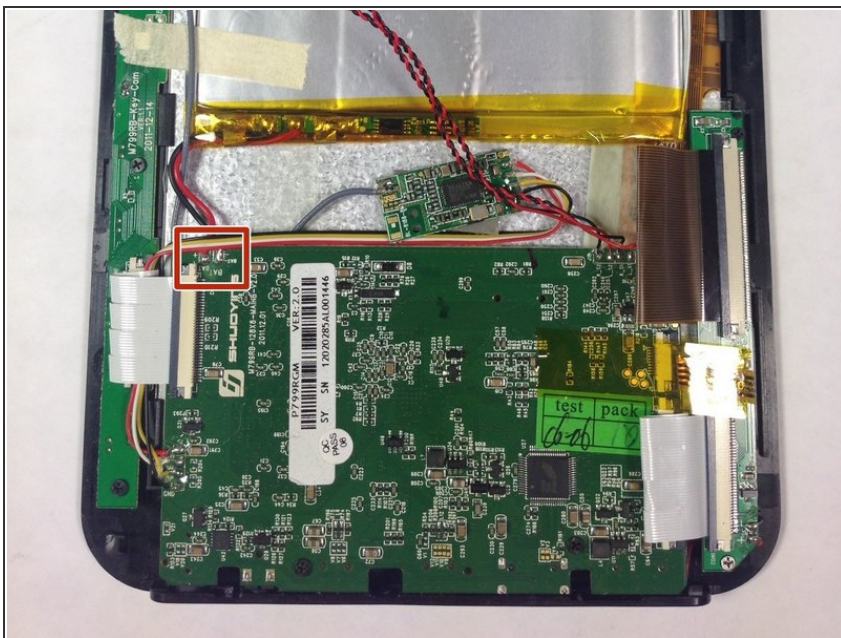
- Remove the 2 Phillips #00 4.5 mm screws from the motherboard.

Step 9



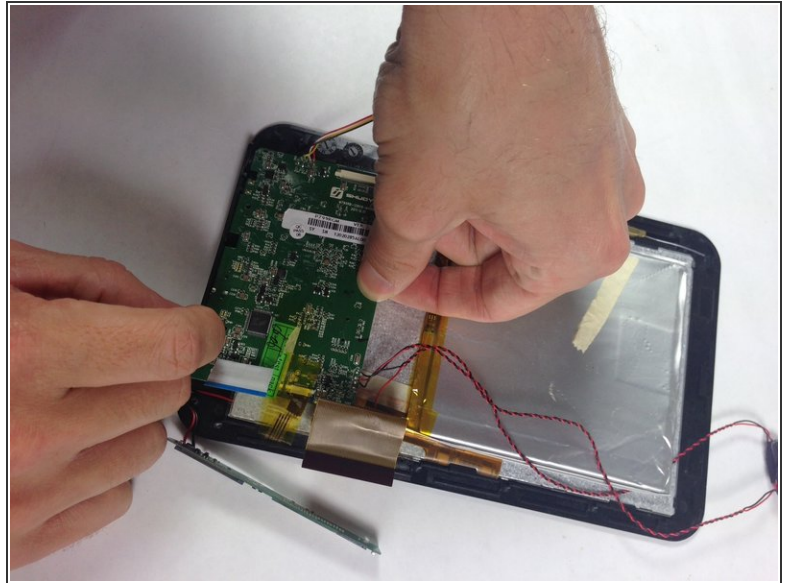
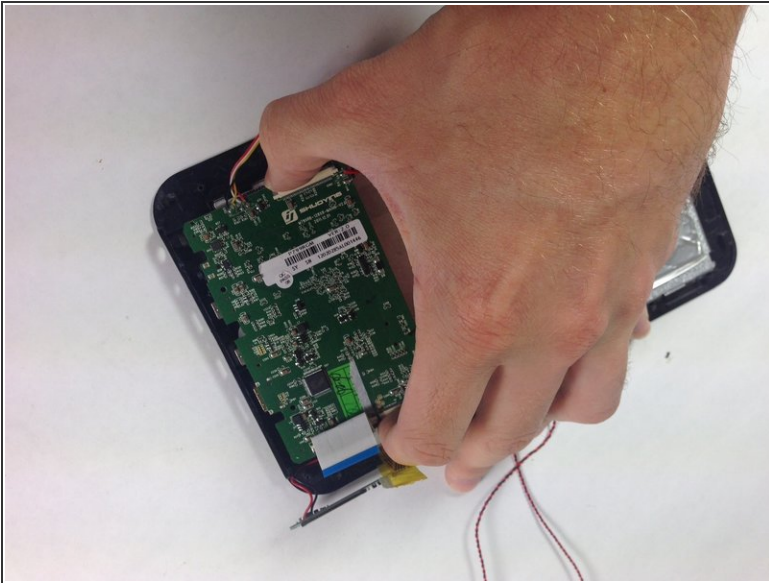
- Desolder the Wi-Fi Adaptor
- ⓘ If not replacing the motherboard or Wi-Fi Adaptor, omit this step
- ⓘ See ifixit's guide to soldering and desoldering for help: [How to Solder and Desolder Connections](#)

Step 10



- Desolder the battery connections
- ⓘ If not replacing the motherboard or battery, omit this step
- ⓘ See ifixit's guide to soldering and desoldering for help: [How to Solder and Desolder Connections](#)

Step 11



- Slide and pull the motherboard out of its current position, so that the ports disconnect from the device.
- Lift the motherboard out of the device.

To reassemble your device, follow these instructions in reverse order.