



# Ematic eGlide 4 Screen Replacement

This guide will help you remove the screen from the Emetic eGlide 4.

Written By: Bailey Hughes



## INTRODUCTION

This replacement guide will help you replace a broken or cracked screen on the Ematic eGlide 4 to ensure maximum viewing capabilities. The screen is attached to the front case as well as the motherboard. The other electrical components of the device must be removed prior to removing the screen. The screen is then removed from the front case, and then the screen's circuit board is disconnected from the mother board.



### TOOLS:

- [Phillips #00 Screwdriver](#) (1)
- [Soldering Iron](#) (1)
- [iFixit Tech Knife](#) (1)



### PARTS:

- [Ematic eGlide 4 Screen](#) (1)

## Step 1 — Rear Panel



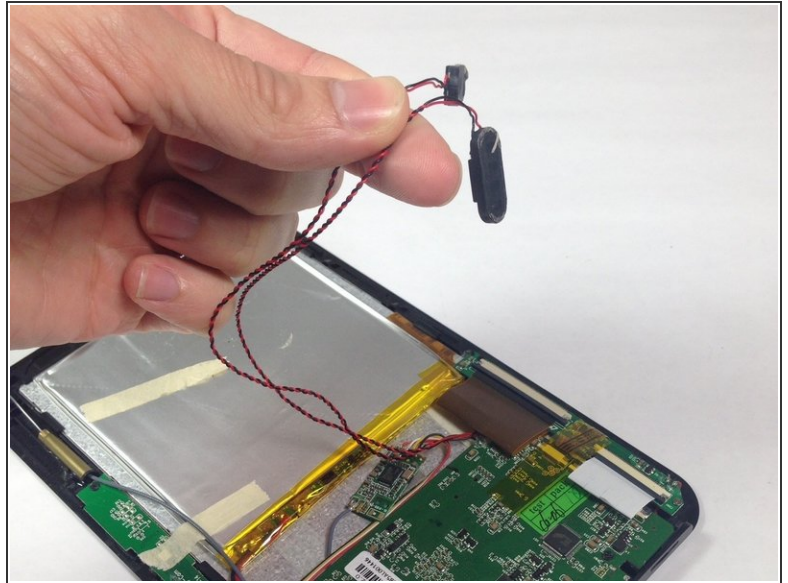
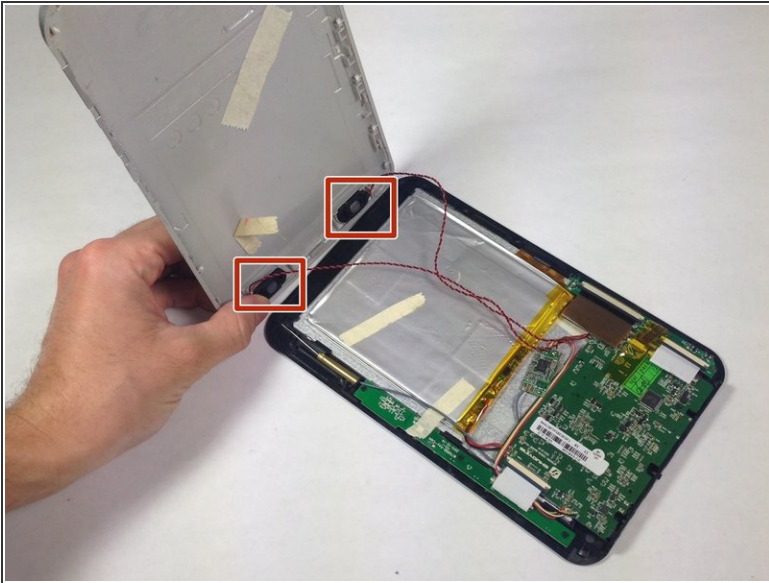
- Remove the 4.6mm Phillips #00 screw at the base of the device.

## Step 2



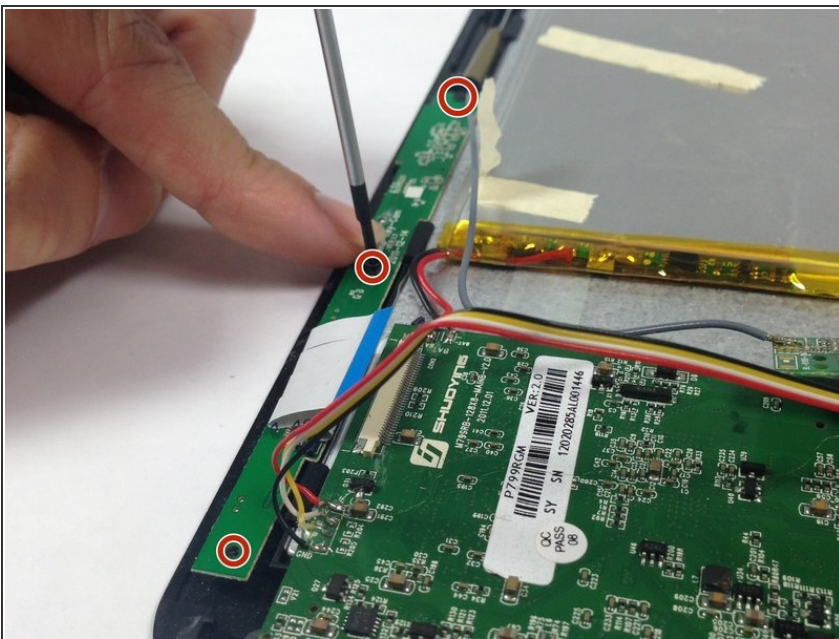
- Slide the rear panel away from the base parallel to the screen.

### Step 3



- Carefully remove the speakers from the rear panel.
- Pull the speakers off of the rear panel.

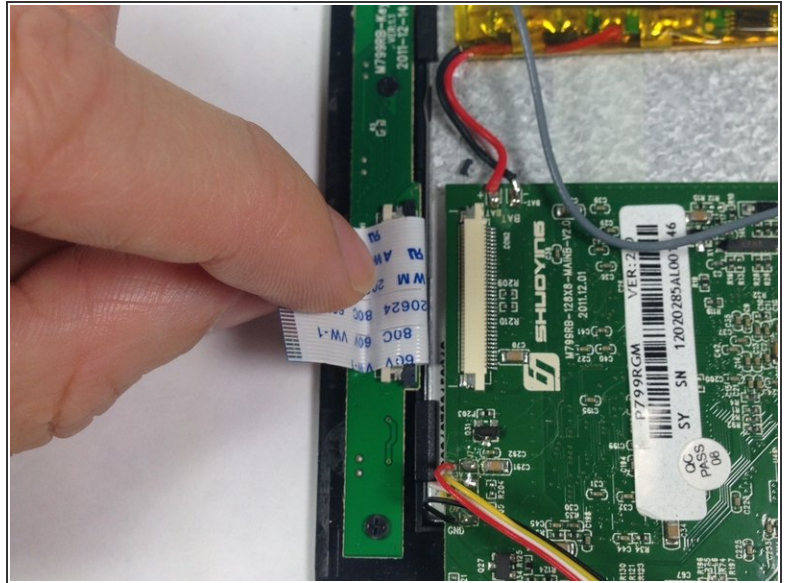
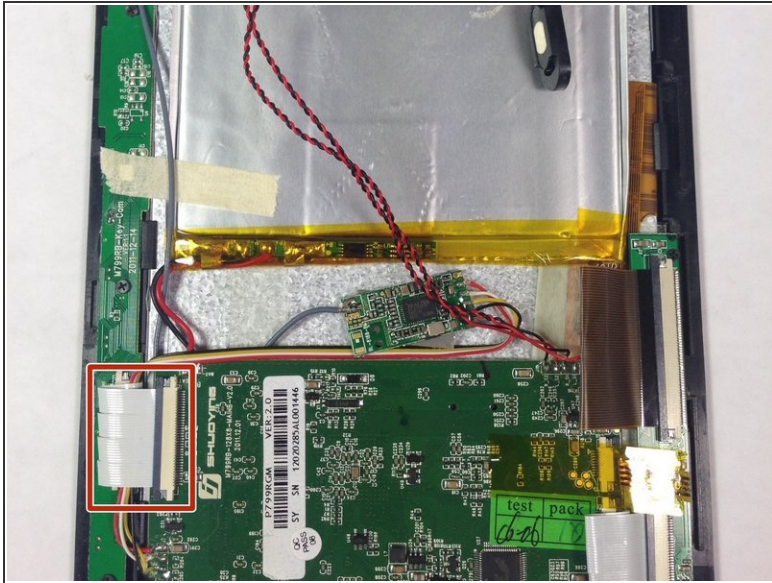
### Step 4 — Side Button Array



- Remove the 3 Phillips #00 4.5 mm screws from the side button array.

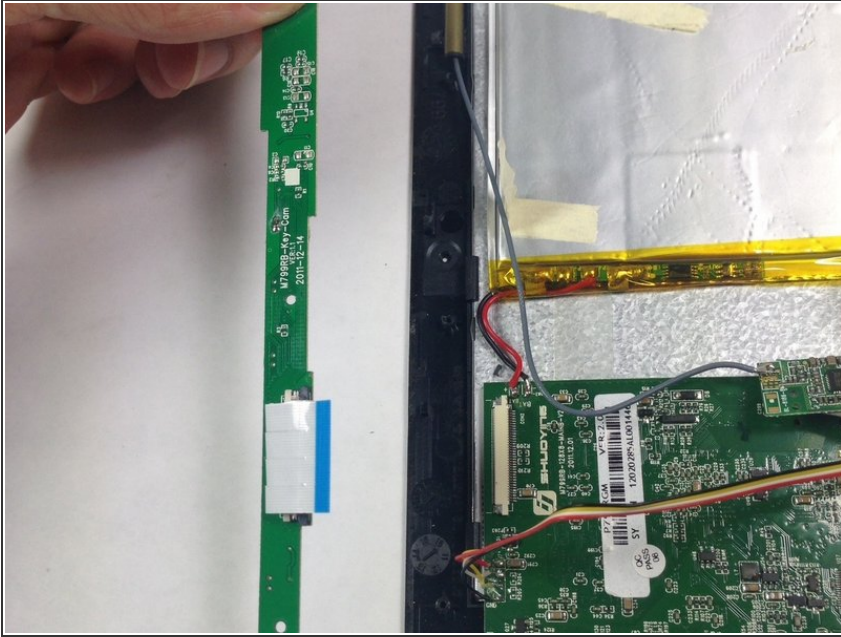


## Step 5



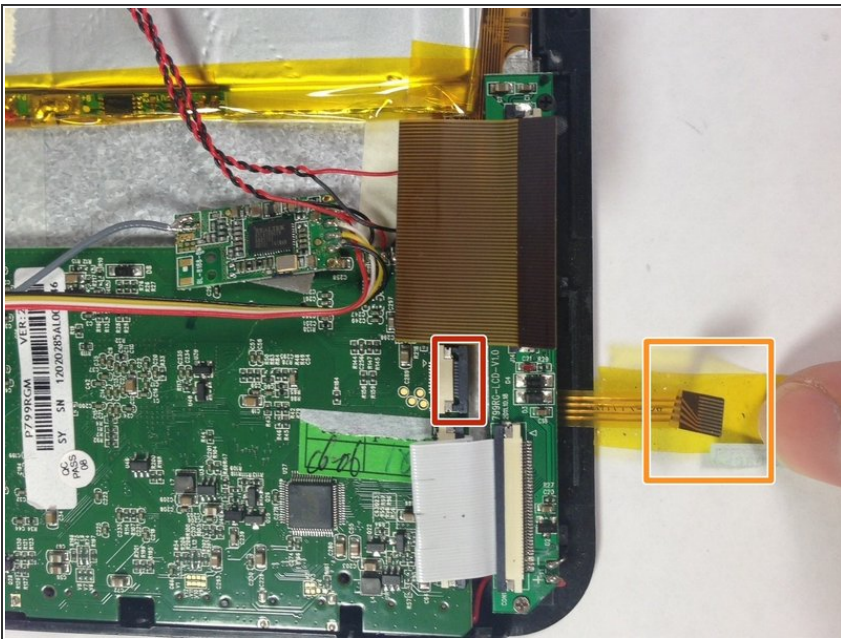
- Slide the grey ribbon wire connector clip away from the ribbon wire port on the motherboard using the pointed tip of a spudger. This process will unclip the wire from the motherboard to release connection.
- ⓘ You do not need to fully disconnect the ribbon wire clip from the ribbon wire port: the clip will stay attached in a loose fit.
- Remove the ribbon wire from the ribbon wire port on the motherboard.

## Step 6



- Remove the side button array from the device.

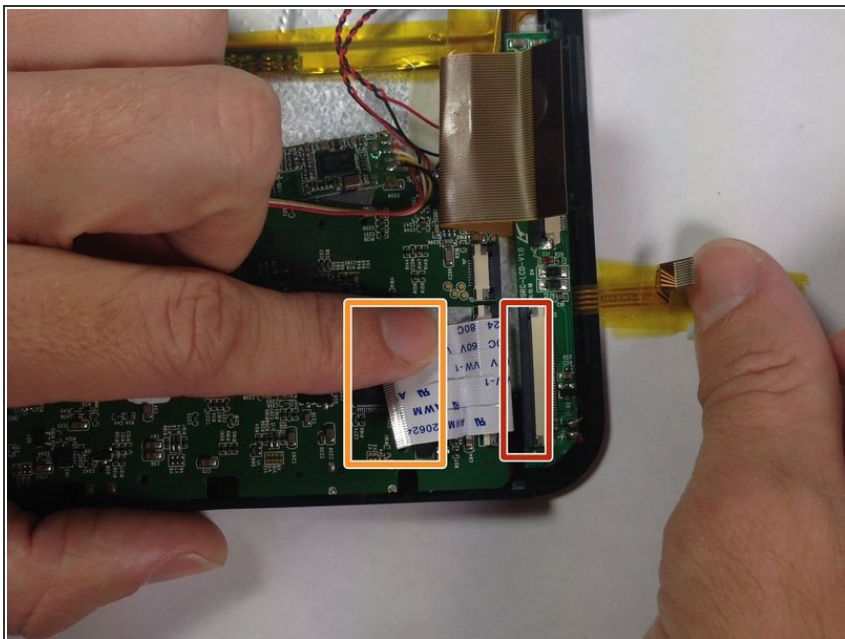
## Step 7 — Motherboard



- Slide the grey ribbon wire connector clip away from the ribbon wire port on the motherboard using the pointed tip of a spudger.
- ⓘ You do not need to fully disconnect the ribbon wire clip from the ribbon wire port: the clip will stay attached in a loose fit.
- Remove the gold ribbon wire from the ribbon wire port on the motherboard.

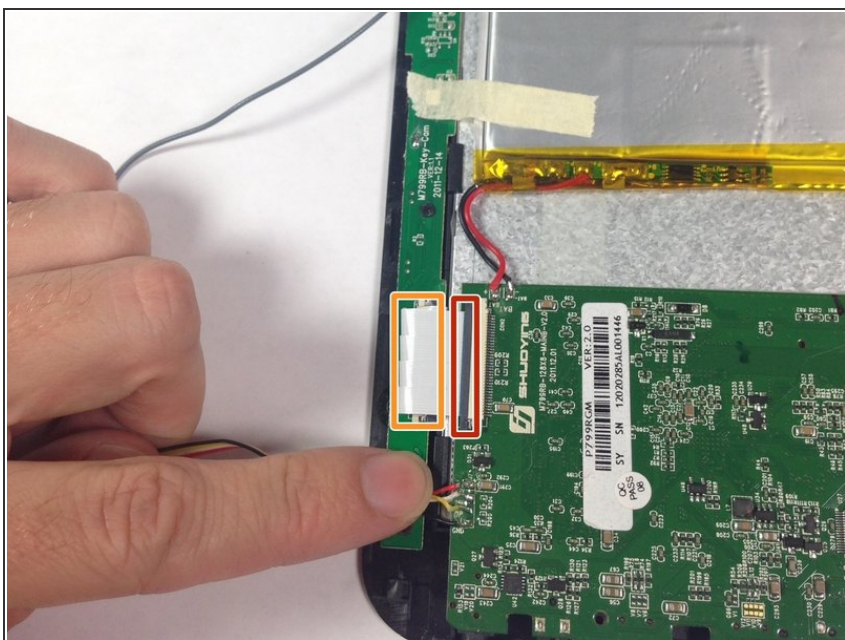


## Step 8



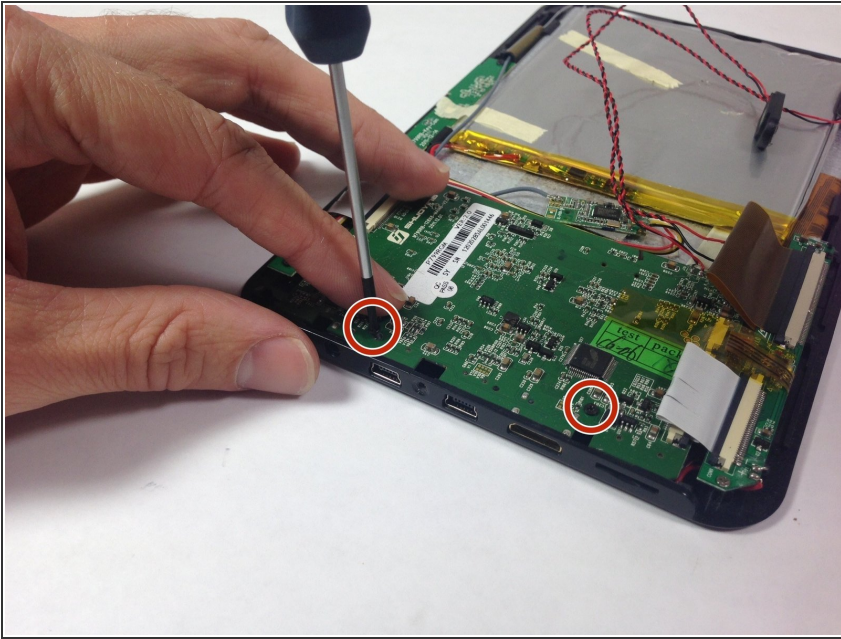
- Slide the grey ribbon wire connector clip away from the white ribbon wire port on the screen board using the pointed tip of a spudger.
- ⓘ You do not need to fully disconnect the ribbon wire clip from the ribbon wire port: the clip will stay attached in a loose fit.
- Remove the ribbon wire from the ribbon wire port on the screen board.

## Step 9



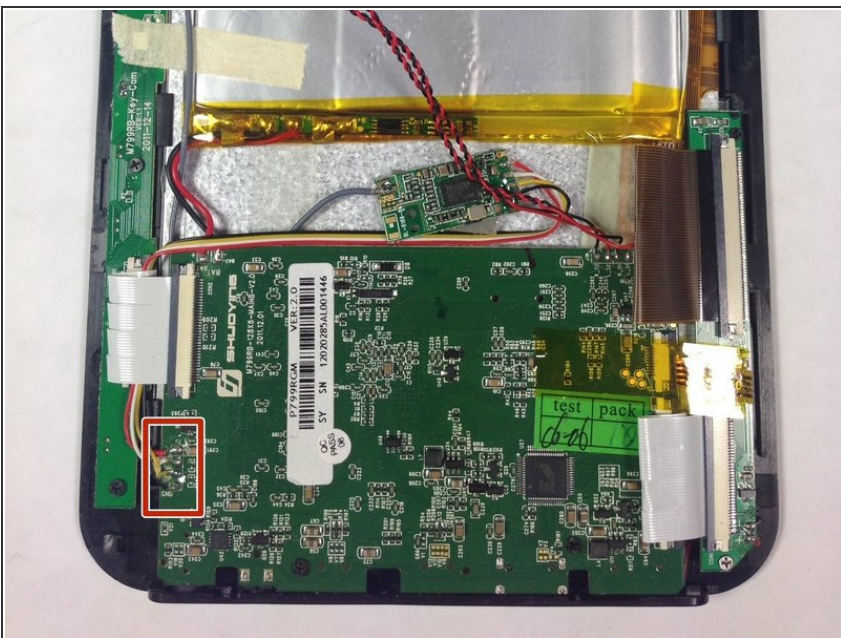
- Slide the grey ribbon wire connector clip away from the ribbon wire port using the pointed tip of a spudger.
- ⓘ You do not need to fully disconnect the ribbon wire clip from the ribbon wire port: the clip will stay attached in a loose fit.
- Remove the ribbon wire from the ribbon wire port.
- ⓘ If you have already removed the side button array you do not need to do this step.

## Step 10



- Remove the 2 Phillips #00 4.5 mm screws from the motherboard.

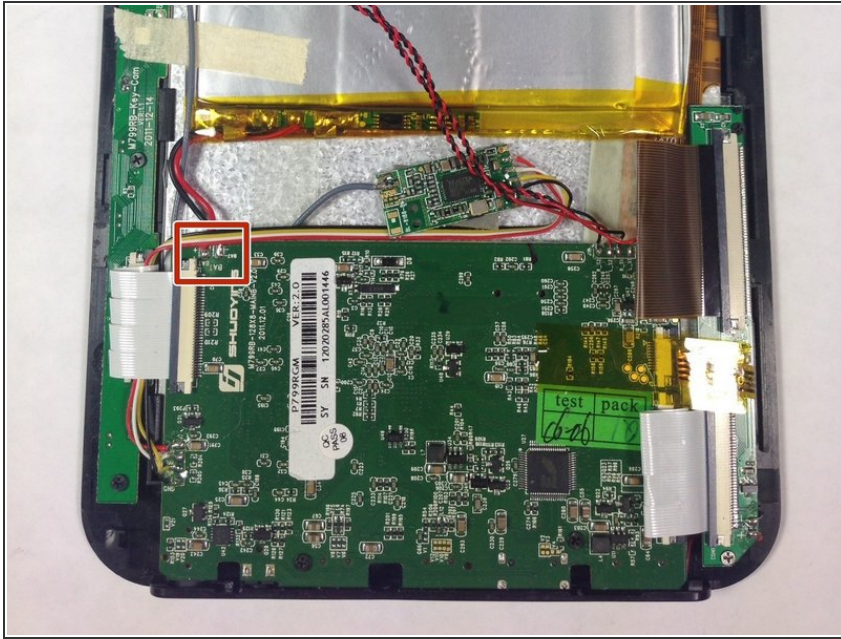
## Step 11



- Desolder the Wi-Fi Adaptor
- ⓘ If not replacing the motherboard or Wi-Fi Adaptor, omit this step
- ⓘ See ifixit's guide to soldering and desoldering for help: [How to Solder and Desolder Connections](#)

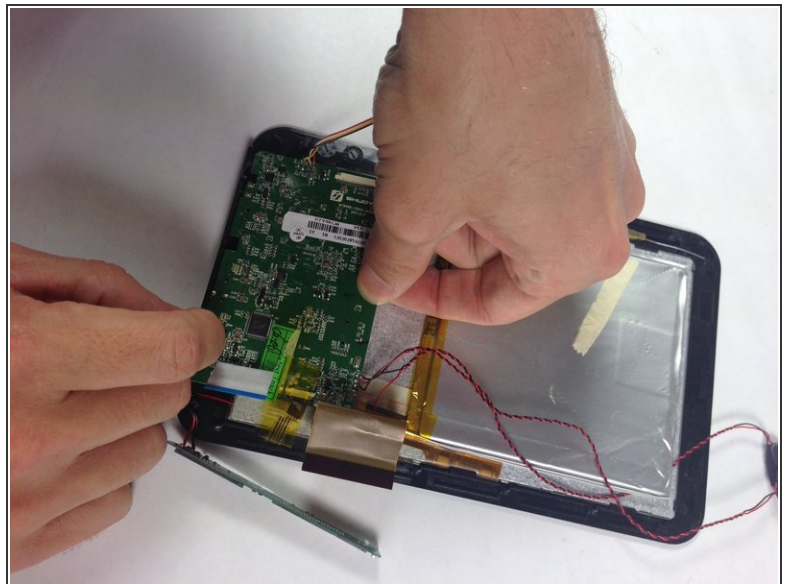
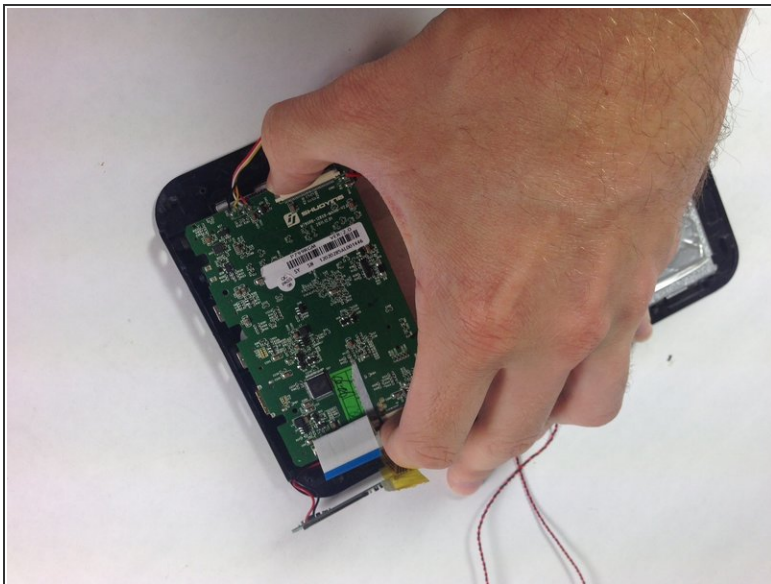


## Step 12



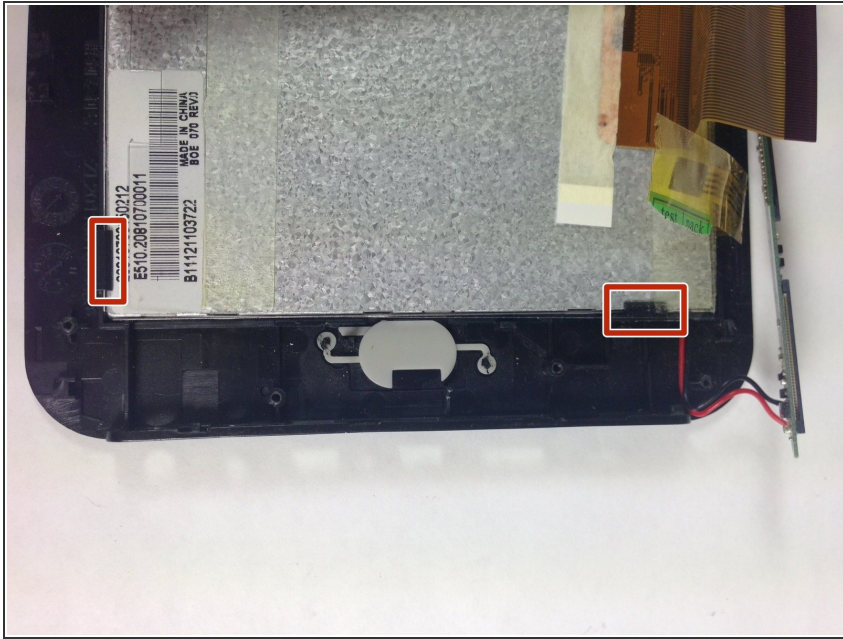
- Desolder the battery connections
- ⓘ If not replacing the motherboard or battery, omit this step
- ⓘ See ifixit's guide to soldering and desoldering for help: [How to Solder and Desolder Connections](#)

## Step 13



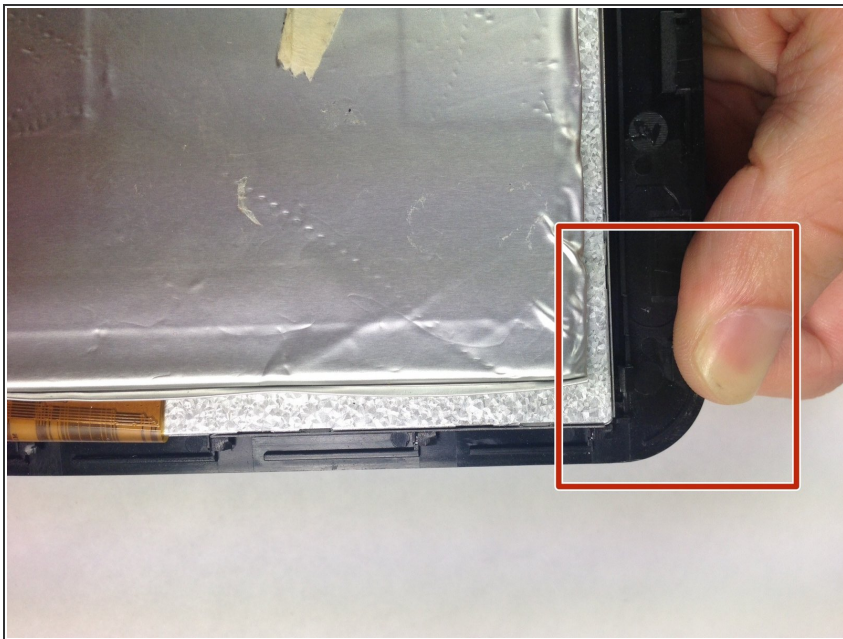
- Slide and pull the motherboard out of its current position, so that the ports disconnect from the device.
- Lift the motherboard out of the device.

## Step 14 — Screen



- Gently pull the front case clips down and off of the back of the screen

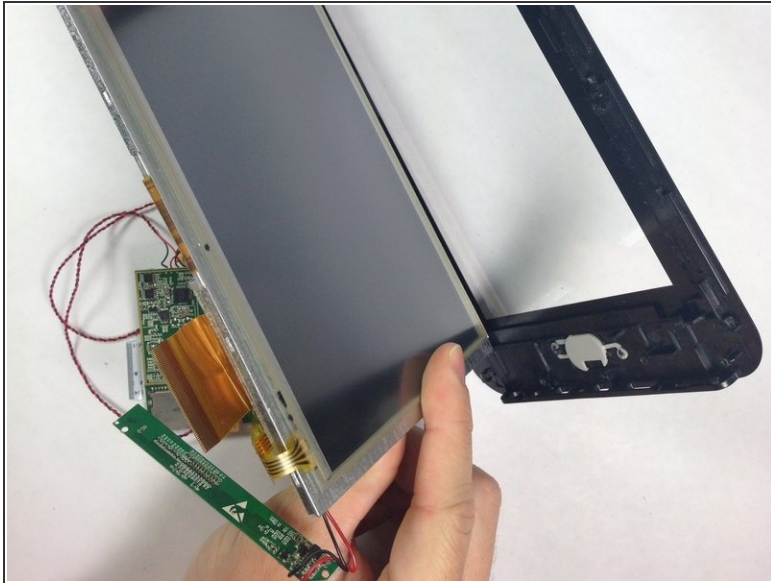
## Step 15



- Gently pull the front case clips down and off of the back of the screen for all of the remaining clips



## Step 16



- Gently pull the screen away from the front case

To reassemble your device, follow these instructions in reverse order.