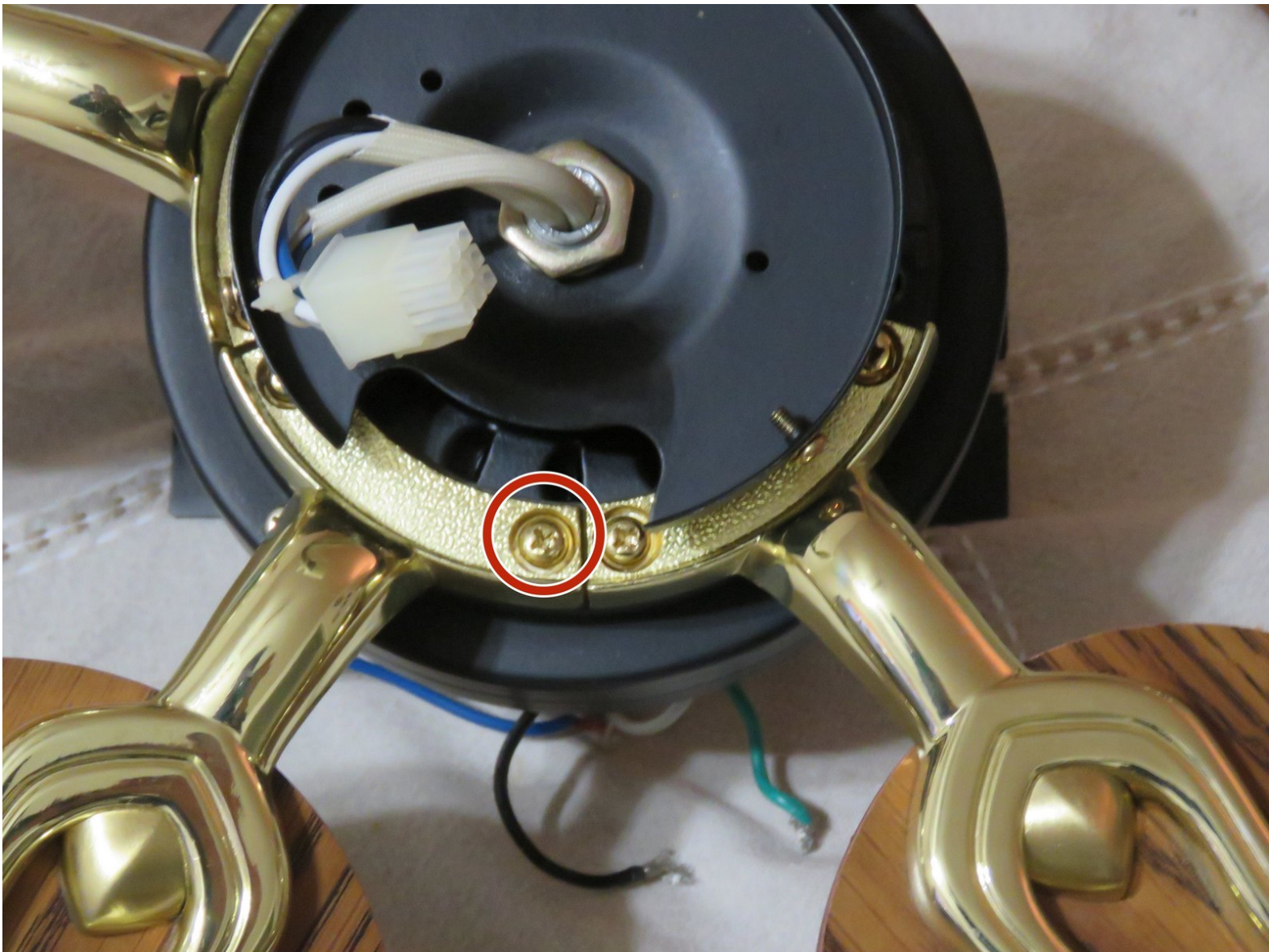




Emerson Ceiling Fan Flywheel Replacement

Fix your broken ceiling fan by replacing the flywheel.

Written By: Tanner Brook



INTRODUCTION

If your Emerson ceiling fan is humming but the blades are not spinning, you most likely have a broken flywheel. It is a lot easier and cheaper to replace the flywheel yourself, rather than the whole fan.

Before using this guide, make sure you check to fan has power going to it. Check to make sure the circuit breaker is not flipped.

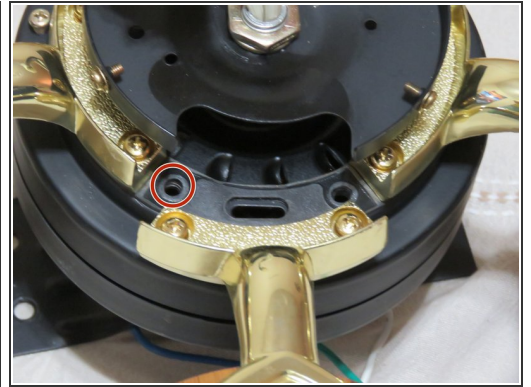
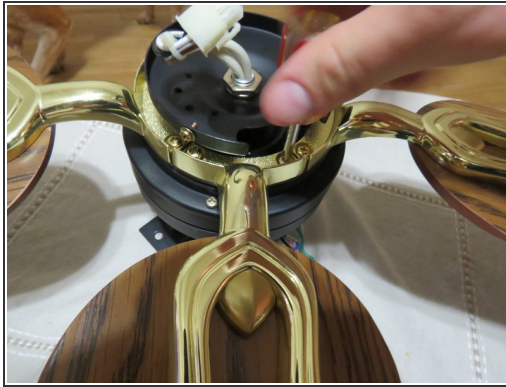
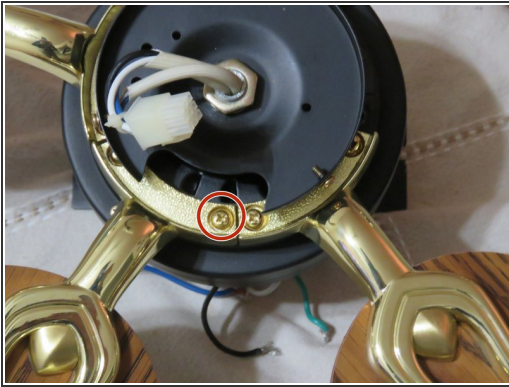
Replacing your flywheel is inexpensive and possible for most ceiling fan brands. If you do not know the brand of your fan, measure the flywheel once you remove it. Note the inside and outside diameter, and the locations and spaces between bracket and screw holes.


You will want to make sure power is turned off to the fan before you start to work on anything.

TOOLS:


- [Phillips #0 Screwdriver](#) (1)
-

Step 1 — Remove Ceiling Fan Blades

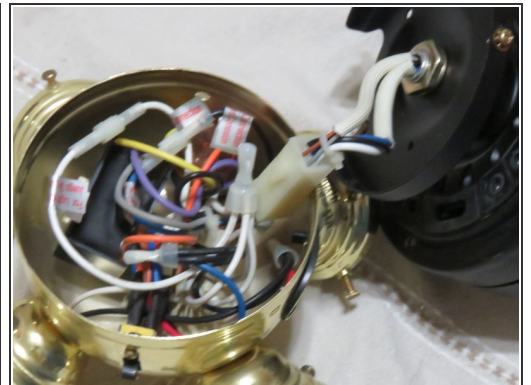
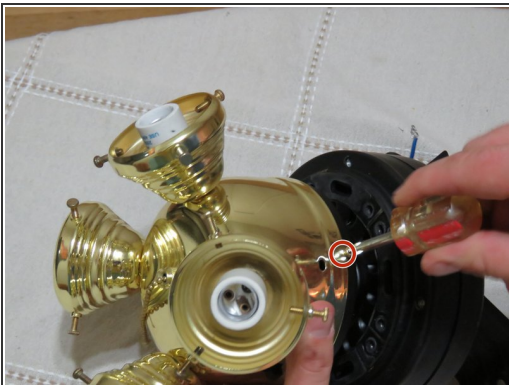



 Make sure power to the ceiling fan is off!

- Using a Phillips #0 screwdriver remove ten 12.7mm screws from the ceiling fan blades.

 It is easier to work on the ceiling fan if you remove the motor.

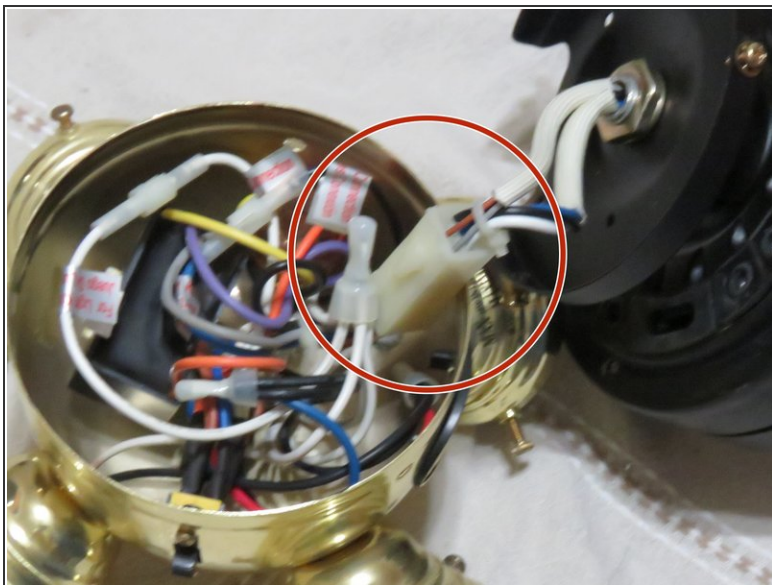
Step 2 — Open Switch Housing



 Remove light bulbs before working on switch housing.

- Open switch housing by using a Phillips #0 screwdriver to remove three 7.9mm screws.

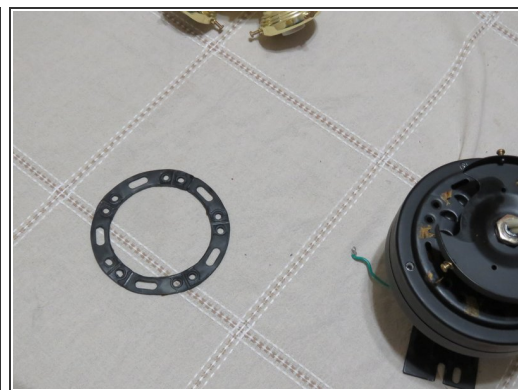
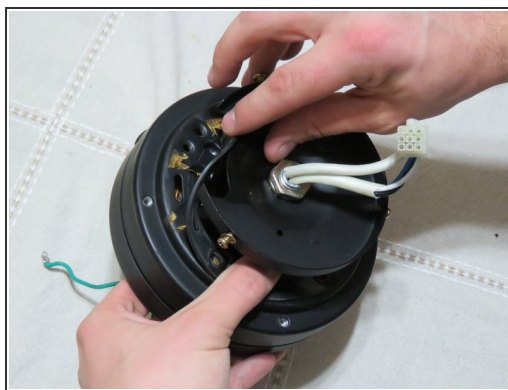
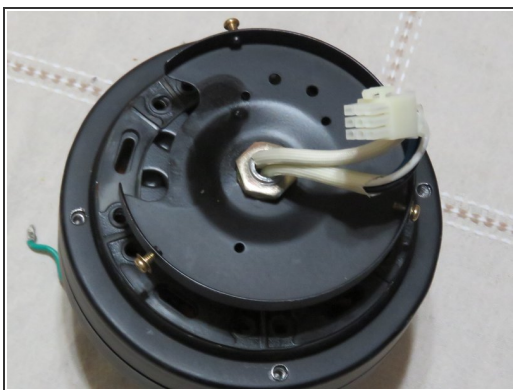
Step 3 — Disconnect Wires



- Disconnect wires that are attached to the switch housing and the motor.

i Make sure you know where to reconnect them.

Step 4 — Remove Broken Flywheel



- Remove the broken flywheel

i Make note of its exact placement on the shaft

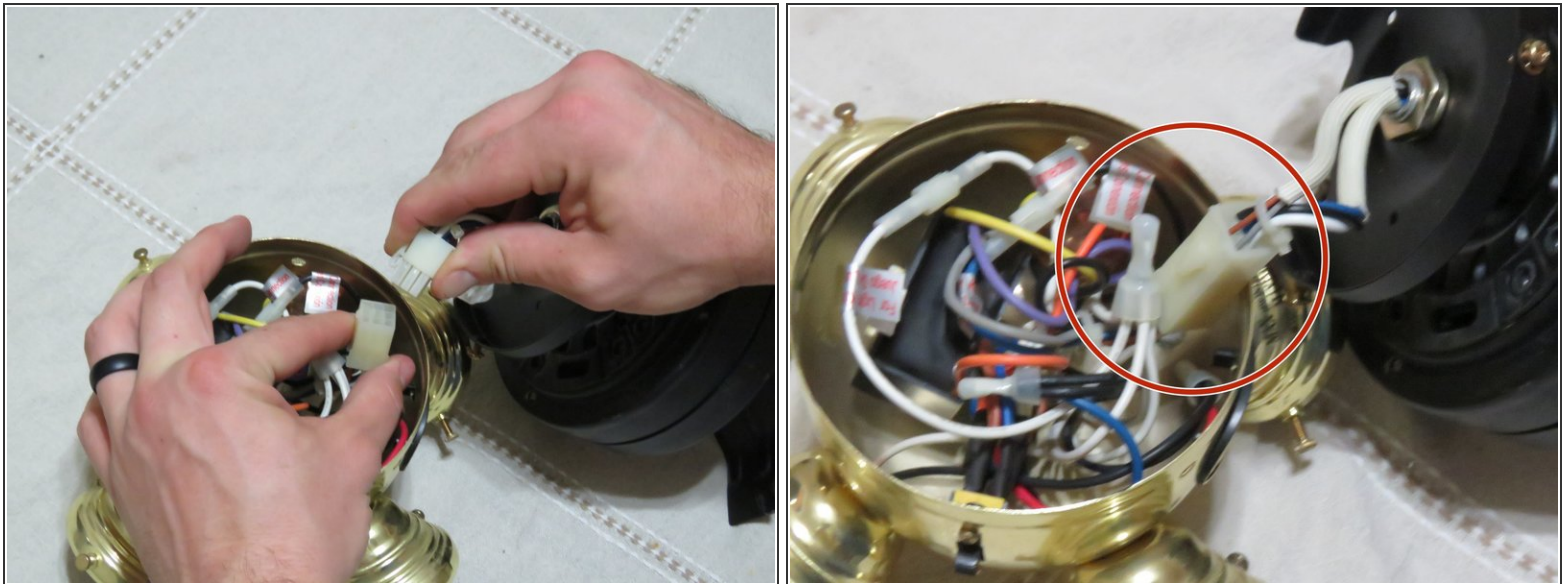
★ It may be a good idea to mark the location with a marker.

Step 5 — Attach New Flywheel



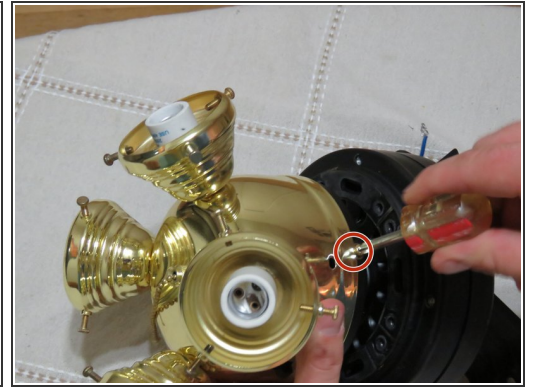
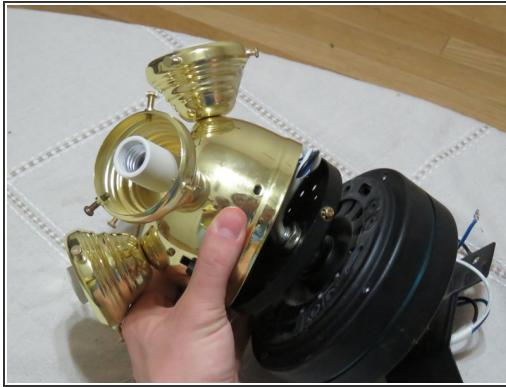
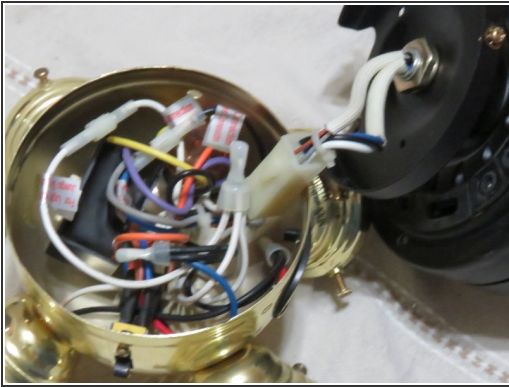
- Slide the new flywheel into place making sure all the holes line up.
- ⓘ Place any wires through the same holes as they were before
- ☑ Replace any other parts you removed during the process.

Step 6 — Reconnect Wires



- Reconnect Wires from the switch housing to the motor.
- ⓘ Make sure you connect the wires to the correct match.

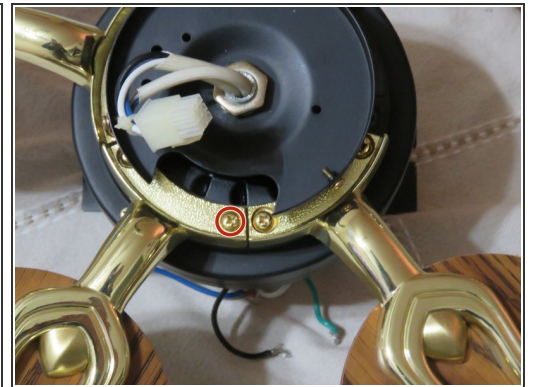
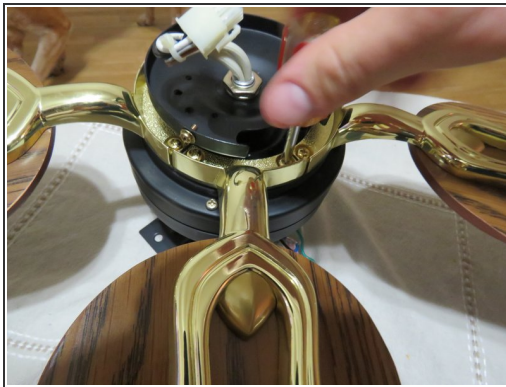
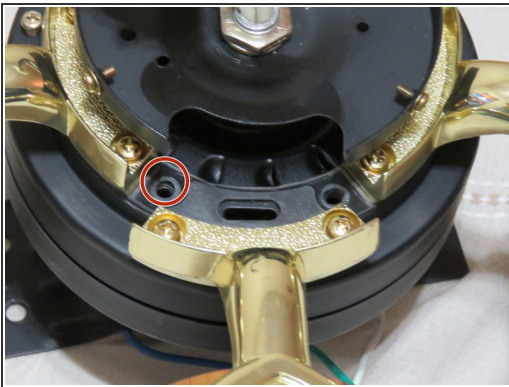
Step 7 — Close Switch Housing



- Screw back on three 7.9mm Phillips screws to the switch housing using a Phillips #0 screwdriver.

☑ Screw the light bulbs back in

Step 8 — Reconnect Ceiling Fan Blades



- Using a Phillips #0 screwdriver reconnect ceiling fan blades by re-screwing on ten 12.7mm Phillip screws.

☑ If you removed the motor reconnect it after blades are on

Test your fan. It should be running quietly with no problems. If something is wrong make sure to double check you hooked the wires up correctly.