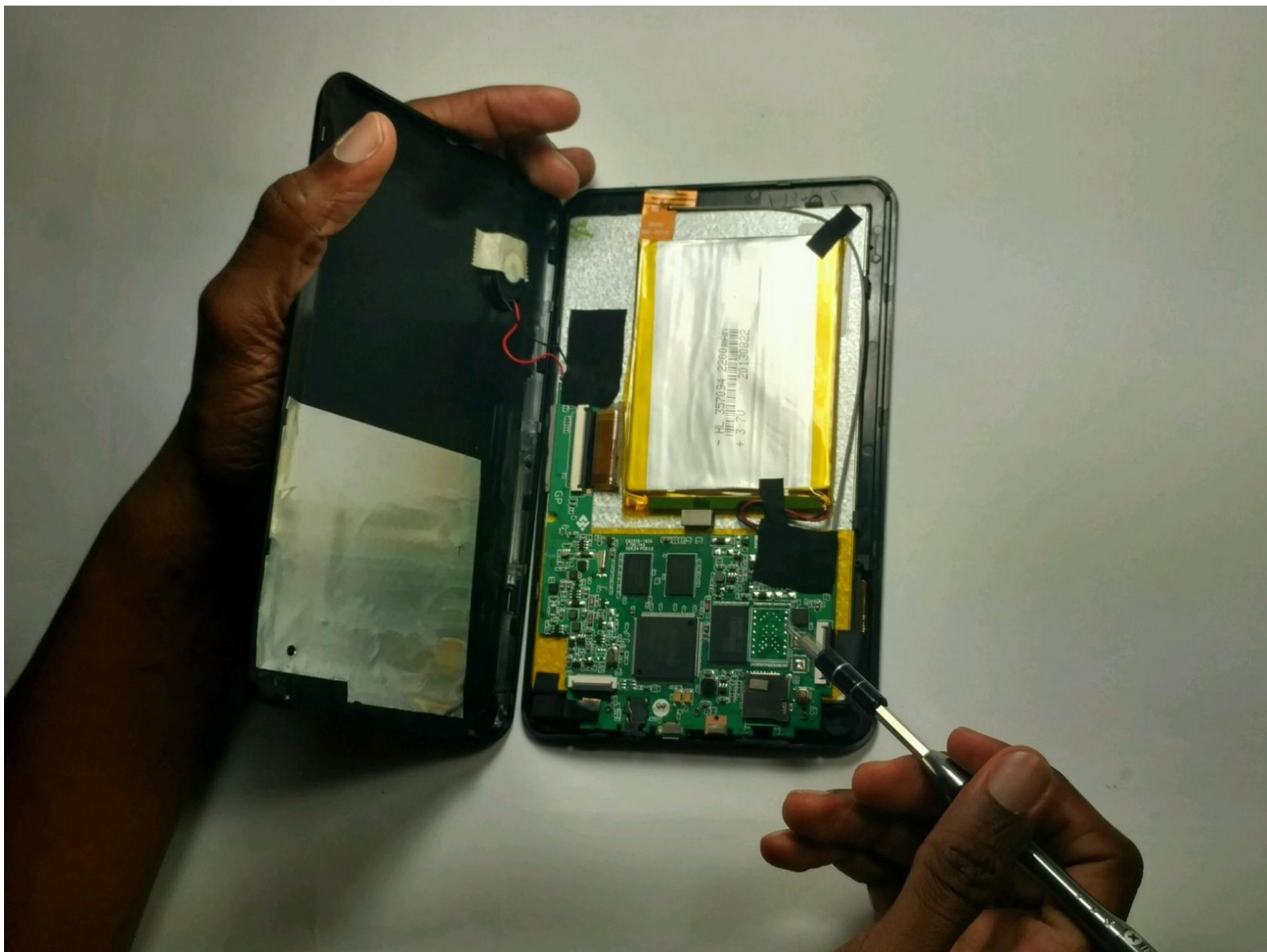




# Emerson EM744 Back Plate

This guide will allow you to break down the device to be able to get the to parts inside of the Emerson EM744

Written By: Easton Olsen



---

## INTRODUCTION

In order to open your device to gain access to the parts inside your device you will need to follow this steps closely . You will need certain tools such as a Phillips Head screwdriver, #00 3mm screws, spudger, plastic opening tool, as well as careful movements so you don't break any other components.



### TOOLS:

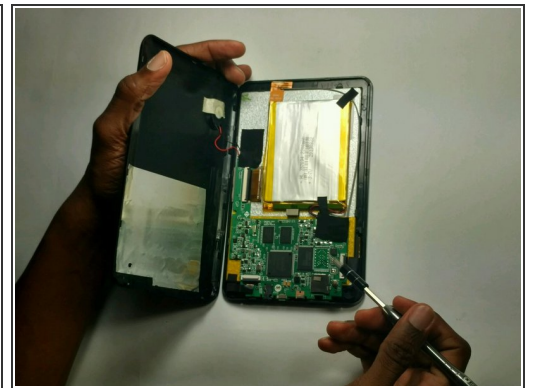
- [Spudger](#) (1)
  - [Phillips #00 Screwdriver](#) (1)
-

## Step 1 — Back Plate



- Use a Phillips 00 bit to remove two 3mm screws from the bottom of the tablet.

## Step 2



- Insert the nylon spudger into the bottom of the tablet, and gently slide it up the side.
- Pull apart the two sides of the tablet, exposing the circuit board, battery, and other components of the tablet.

To reassemble your device, follow these instructions in reverse order.