



Emerson EM744 Camera Replacement

Use this guide to open your Emerson EM744 and replace the camera on the tablet.

Written By: Micalle Marin



INTRODUCTION

If the tablet has out of focus pictures or doesn't take them at all, this guide will show you how to replace the camera. Tools that are needed will include a Phillips Head screwdriver with a #00 3mm screw, spudger, plastic opening tool, as well as a pair of tweezers to properly remove the broken equipment.

TOOLS:

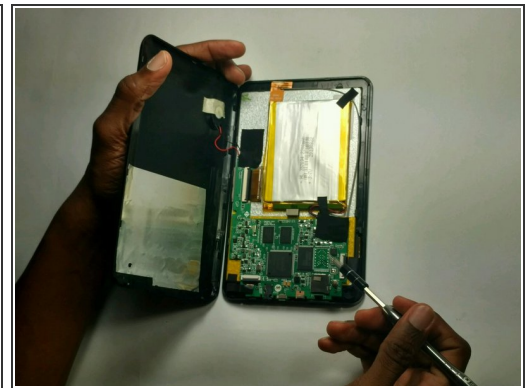
- [Phillips #00 Screwdriver](#) (1)
 - [Spudger](#) (1)
 - [Plastic Opening Tool](#) (1)
 - [Tweezers](#) (1)
-

Step 1 — Back Plate



- Use a Phillips 00 bit to remove two 3mm screws from the bottom of the tablet.

Step 2



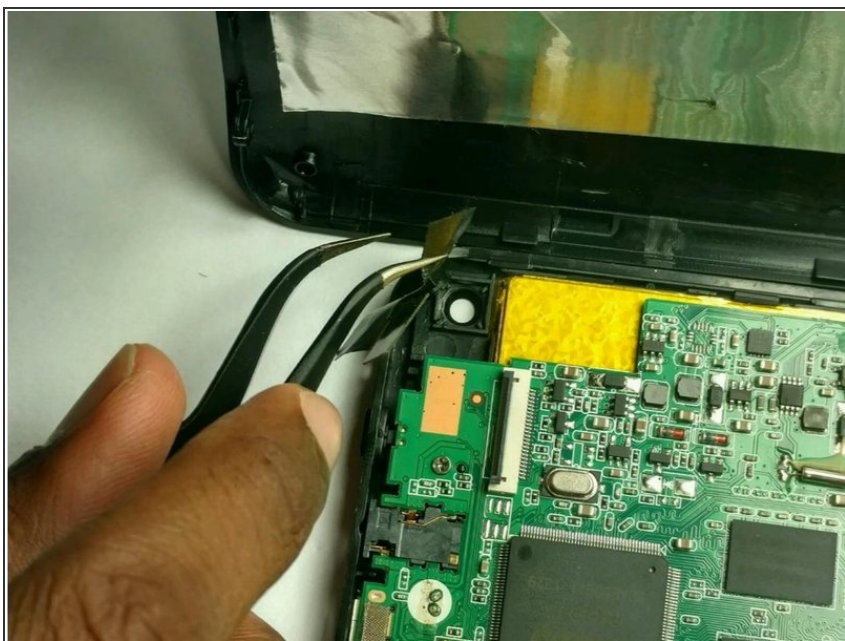
- Insert the nylon spudger into the bottom of the tablet, and gently slide it up the side.
- Pull apart the two sides of the tablet, exposing the circuit board, battery, and other components of the tablet.

Step 3 — Camera



- Using the spudger to raise the zero insertion force (ZIF) connector to freely release the ribbon.

Step 4



- Using tweezers gently pull the ribbon off of the enclosure.
- Remove the camera.

To reassemble your device, follow these instructions in reverse order.