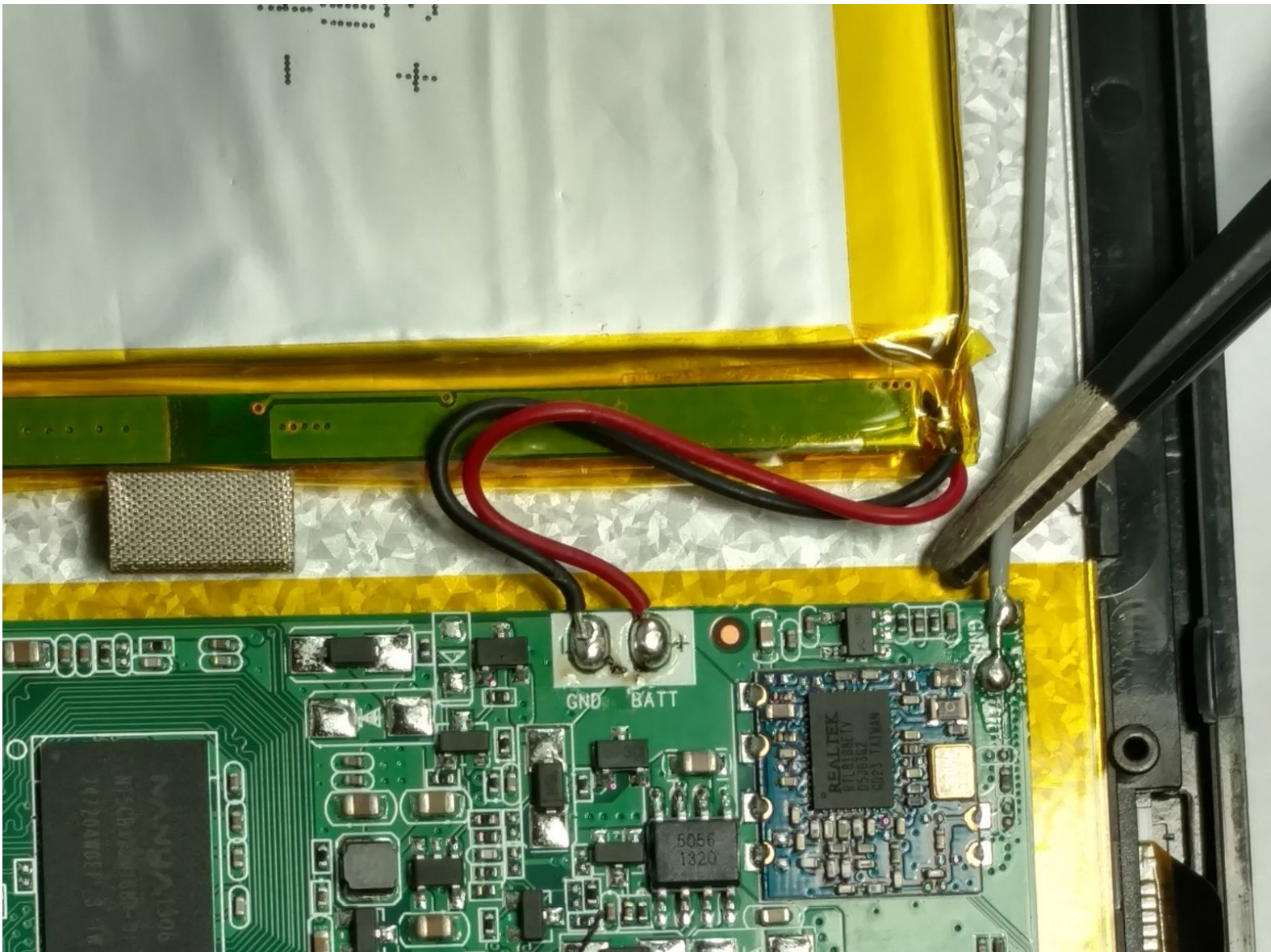




Emerson EM744 Wi-Fi Antenna Replacement

In this guide you will open the tablet and replace the Wi-Fi Antenna.

Written By: Easton Olsen



INTRODUCTION

If your tablet will not connect to wifi, even after you have reset the router, you can use this guide to replace the wifi antenna. You should be able to easily identify which part this is, as it is a long wire attached to the motherboard. You will need tools such as a Phillips Head screwdriver with a #00 3mm screw, a spudger, plastic opening tool, as well as a soldering iron to complete the job.



TOOLS:

- [Spudger](#) (1)
- [Phillips #00 Screwdriver](#) (1)
- [Tweezers](#) (1)
- [Soldering Iron](#) (1)
- [Phillips #0 Screwdriver](#) (1)



PARTS:

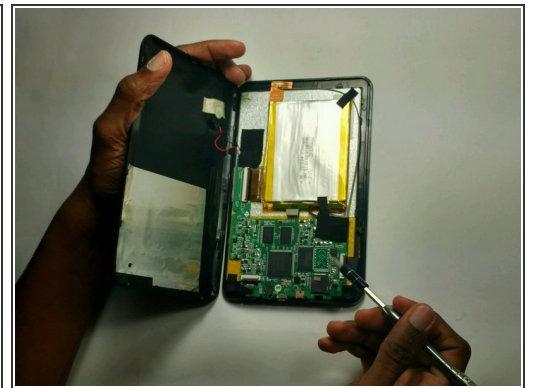
- [WiFi antenna](#) (1)

Step 1 — Back Plate



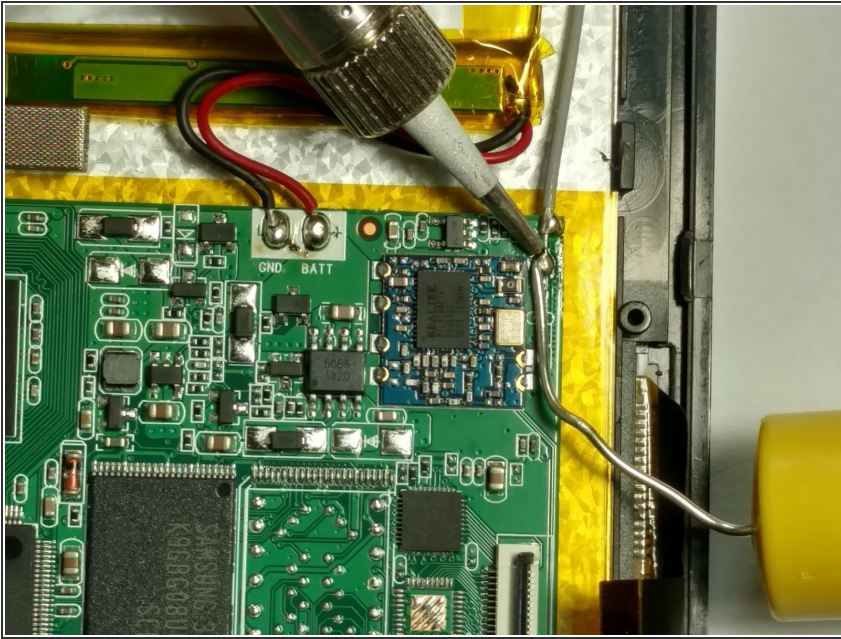
- Use a Phillips 00 bit to remove two 3mm screws from the bottom of the tablet.

Step 2



- Insert the nylon spudger into the bottom of the tablet, and gently slide it up the side.
- Pull apart the two sides of the tablet, exposing the circuit board, battery, and other components of the tablet.

Step 3 — Wi-Fi Antenna



- Desolder the connections to remove the antenna.
- Refer to the [soldering technique guide](#).

To reassemble your device, follow these instructions in reverse order.