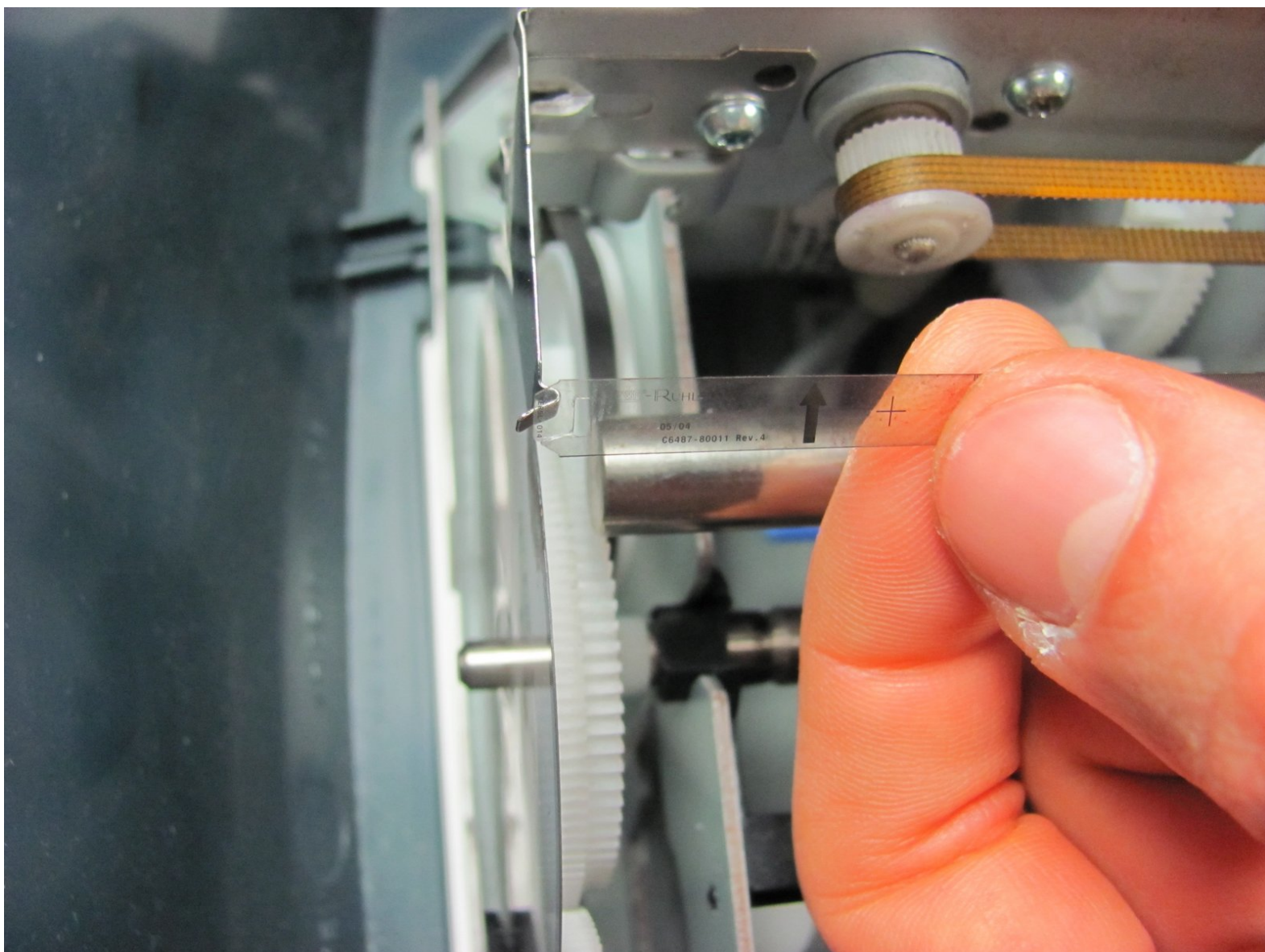




Encoder Strip Replacement

Replace the encoder strip.

Written By: Jeremy Mahrt



INTRODUCTION

Replace the encoder strip.



TOOLS:

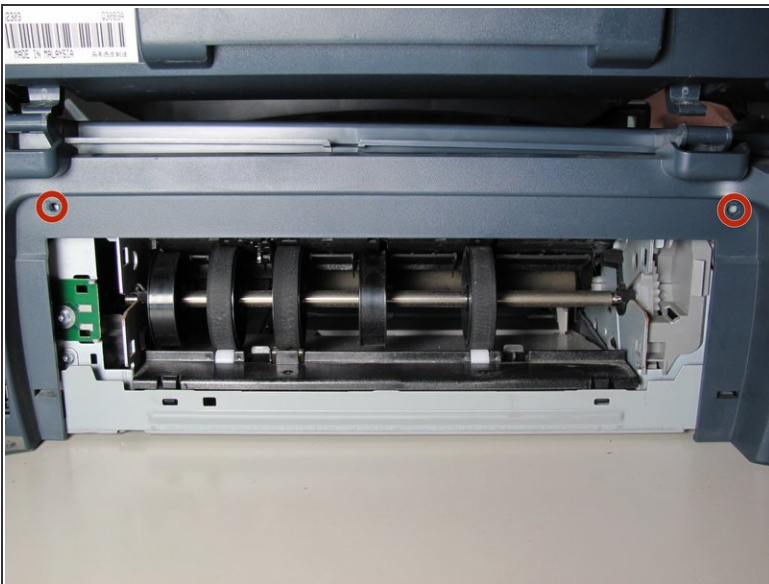
- [T10 Torx Security Bit Screwdriver](#) (1)
-

Step 1 — Remove Back Panel



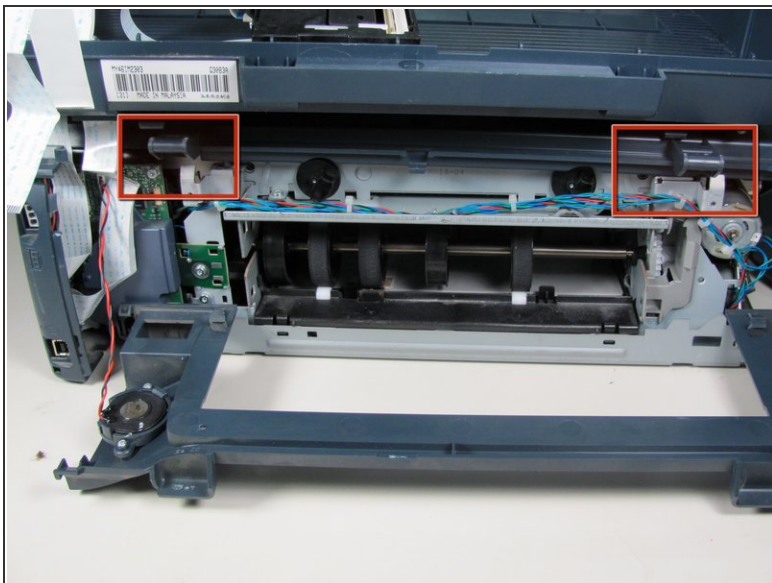
- Remove the back panel by inserting your fingers into the indentations next to the tabs. Press the tabs inward towards each other while pulling the back panel toward you.

Step 2 — Remove Inner Back Pannel



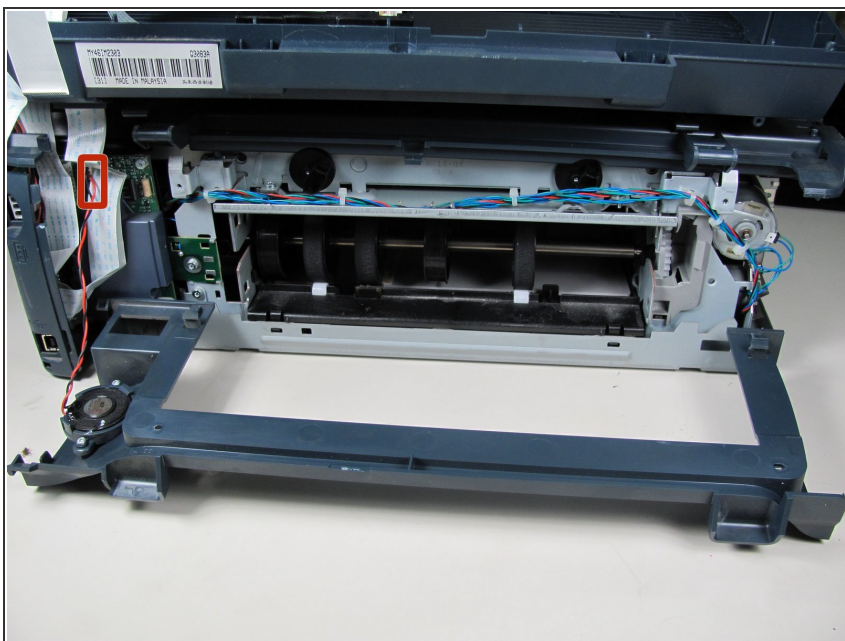
- Using the T10 Torx Security Bit Screwdriver, unscrew the screws on the upper left and right corners of the inner panel to remove the inner back panel.

Step 3 — Remove Upper Portion



- Press down on the two plastic hinges to remove the upper portion of printer.

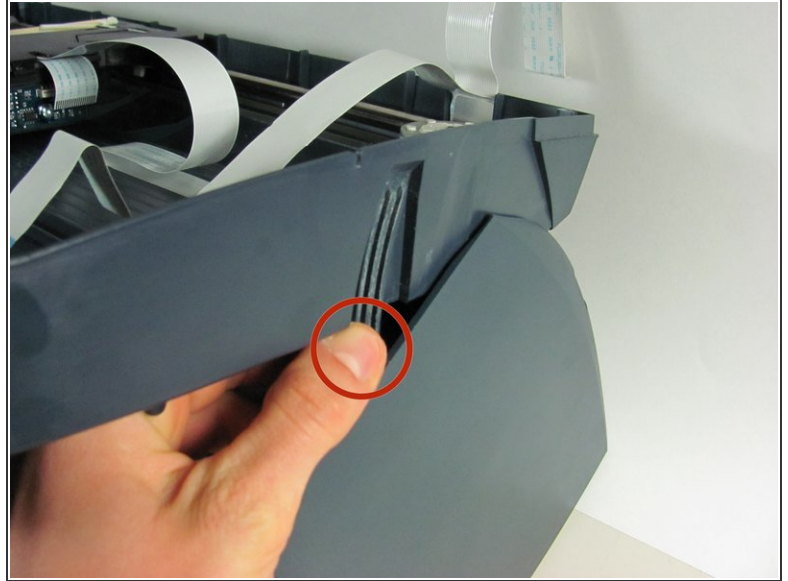
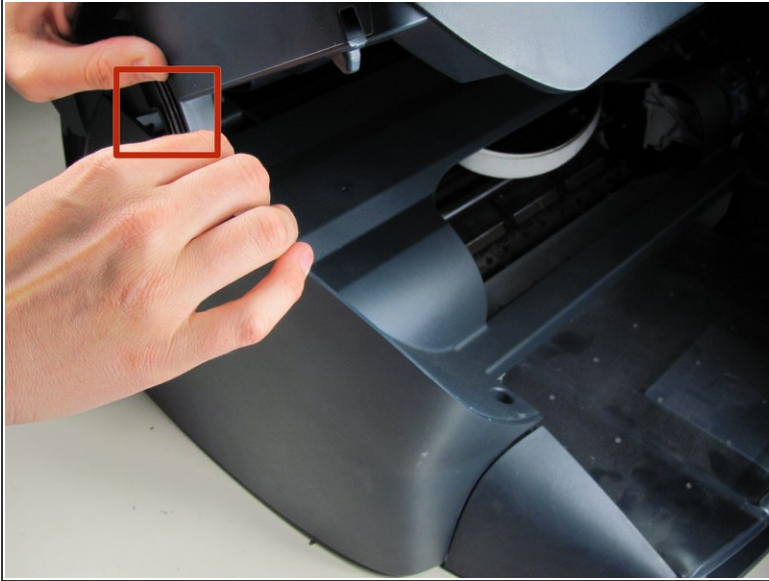
Step 4 — Unplug Speaker Wire



- To unplug the speaker wire, grasp the plastic plug on the end of the speaker wire then gently pull the

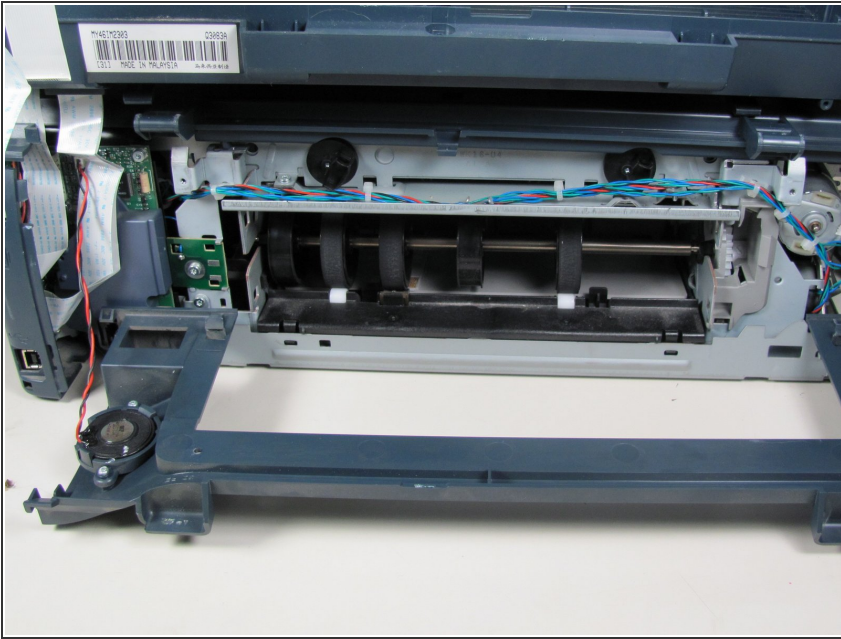
plug away from the printer until removed.

Step 5 — Removing Scanner Tray



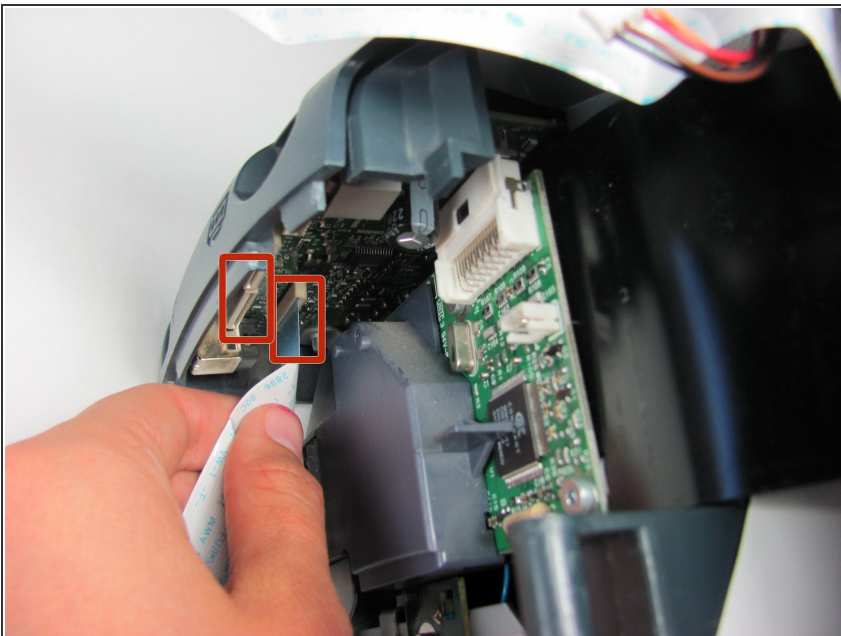
- Rotate the printer so the paper tray is facing towards you.
- Gently lift the scanner tray up and away from the printer.
- Press the gray plastic tabs inward toward to release the tabs from the printer.

Step 6 — Removing Scanner Tray - cont.



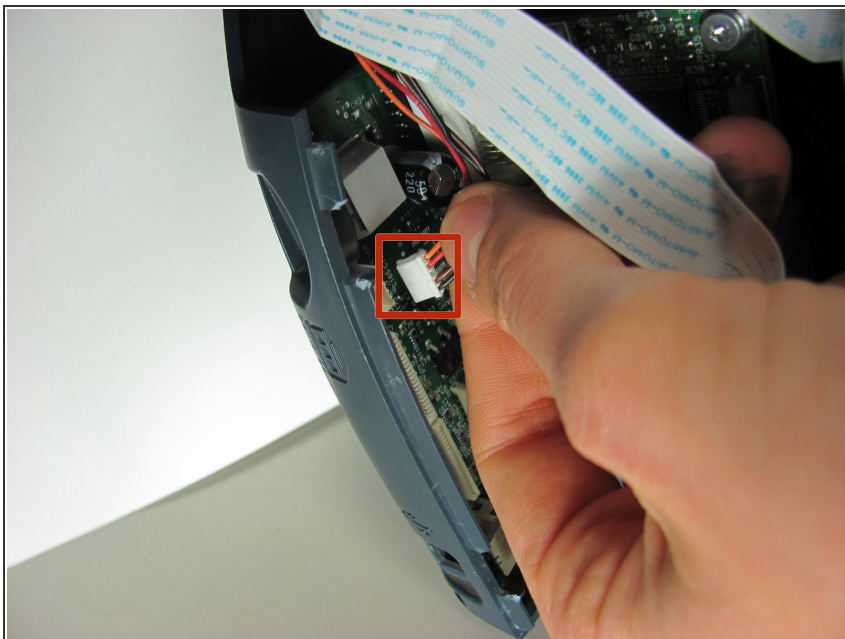
- Returning to the back of the printer, remove the scanner from the back hinges.
- ⓘ With pressure applied, the scanner will detach easily.

Step 7



- Gently grasp and unplug the two white ribbon cables from the printer body.
- ⓘ Be sure to grasp the cable at the connector and not to pull on the wires themselves.

Step 8



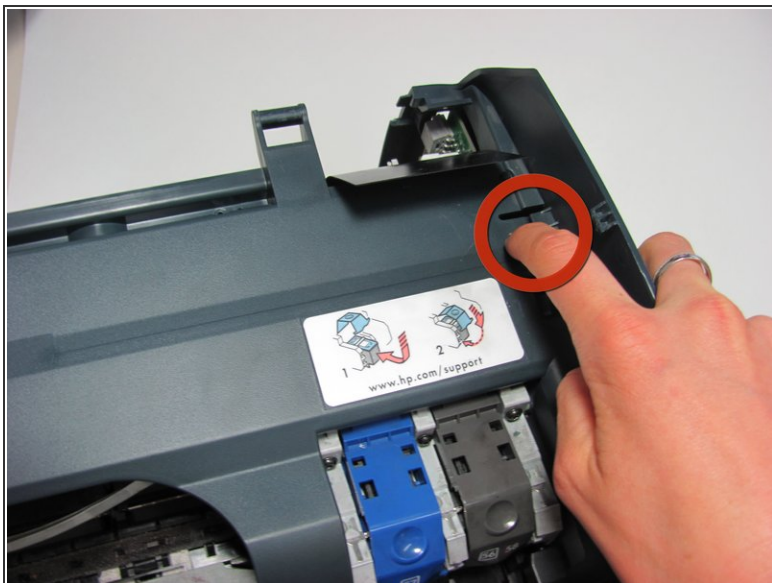
- Unplug the white plastic multi-wire connector with the orange, black, red, and brown wires from its port.
- ⓘ Be sure to grasp the white connector and not to pull on the wires themselves.

Step 9 — Detaching the Scanner Tray



- Detach the scanner tray from the printer by lifting the scanner tray off the printer body.

Step 10 — Encoder Strip



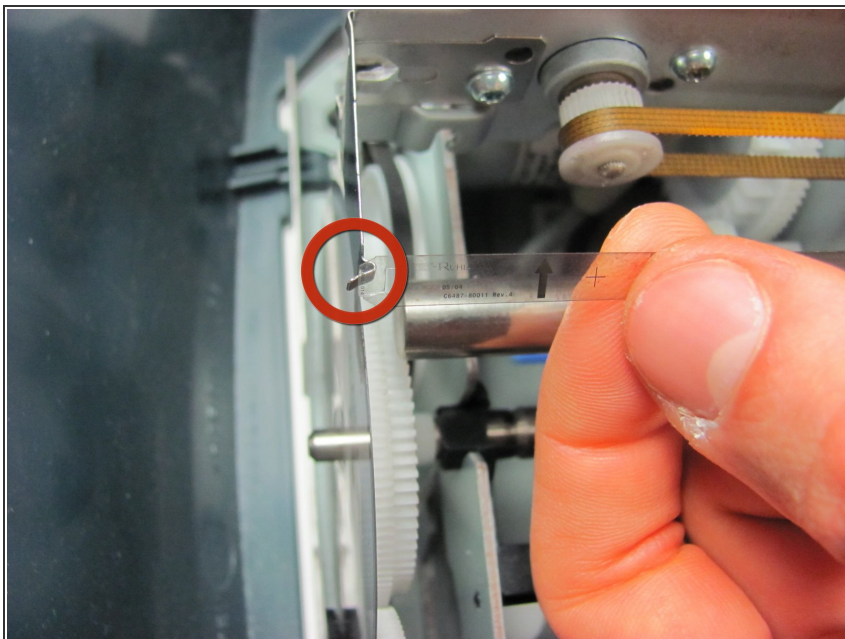
- Locate the panel labeled with a HP support link sticker.
- Release the tab by the support link sticker.
- Remove the black screw below the tab.

Step 11



- Remove the two black screws closest to the printer tray.

Step 12



- Unhook the encoder strip from its small silver hooks and remove it from the printer.
- To replace, feed the new encoder strip through the silver hooks.

To reassemble your device, follow these instructions in reverse order.