



# Englewood Black & Decker Black Toaster OvenTeardown

Follow the pictures for help tearing down your Black & Decker Toaster Oven in case you need to repair or replace parts of your toaster!

Written By: Aviv Weinstein



## INTRODUCTION

Get the ultimate toaster oven from Black & Decker. This toaster over features one touch controls for total convenience. Don't spend time preheating your large oven when you can bake you 9" pizza in this toaster over. All of the functionality of a regular oven with only a fraction of the size. Made for your quick and convenient meals. Give both your toaster and your oven a break and buy one of these today.

Features include:

- One touch controls enable simpler operation
- 30 minute timer with stay on feature let you know when the cooking is complete
- Toast, broil, bake, and keep warm settings for a variety of foods and meals
- Fit anything from 4 slices of toast to a 9" pizza for your cooking convenience
- Steel composition for long lasting durability



### TOOLS:

- [Slip Joint Pliers](#) (1)
  - [Phillips #1 Screwdriver](#) (1)
  - [Flathead Screwdriver](#) (1)
-

## Step 1 — Fully Assembled Toaster



- Original, un-tampered with toaster oven. Cleaning before teardown optional.
- **BE SURE THE TOASTER OVEN IS UNPLUGGED BEFORE BEGINNING TEAR DOWN**



## Step 2 — Removing the Oven's Plastic Legs



- First you need to remove the grey, plastic caps on the legs of the toaster oven to gain access to the screws.
- Use a phillips head screwdriver that is as narrow as possible. This makes it easier on you to get the head of the screwdriver to the actual screw, without being stopped by the oven's plastic legs.

## Step 3 — Removing Timer Knobs off the Front Pannel



- Pull the knobs off with your hands. A flathead screwdriver may be used for additional leverage when removing these.

## Step 4 — Removing the Back Panel



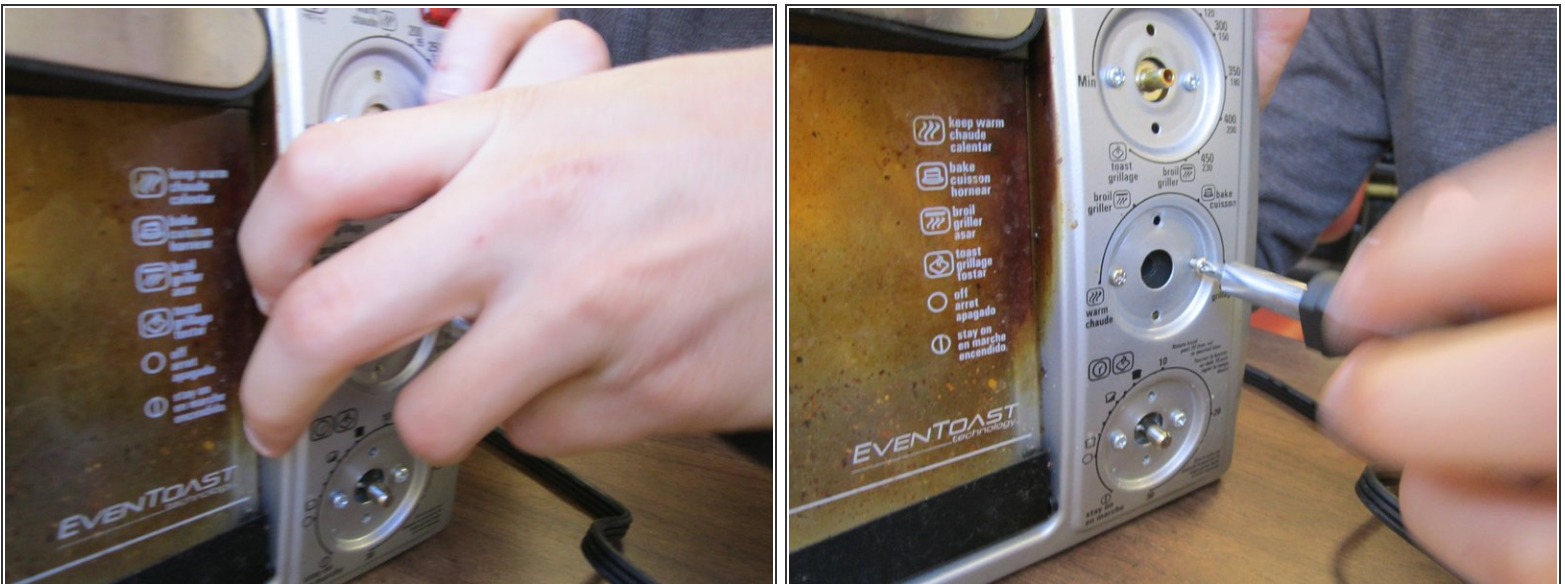
- Flip the toaster oven onto its side and use a phillips head screwdriver to remove the screws securing the back panel of the toaster to the toaster's main body.
- **DO NOT LOSE THE SCREWS**
- With the back panel no longer secured, remove it from the body of the toaster oven.

## Step 5 — Removing the Main Body of the Toaster Oven



- The screws on the main body housing are the same type as those used for securing the back panel. There is no need to keep them separated.
- Use a pair of pliers to remove the two screws that are neither phillips nor flat type of screw.
- With all screws removed, the black main body of the toaster oven can be removed from the chassis.

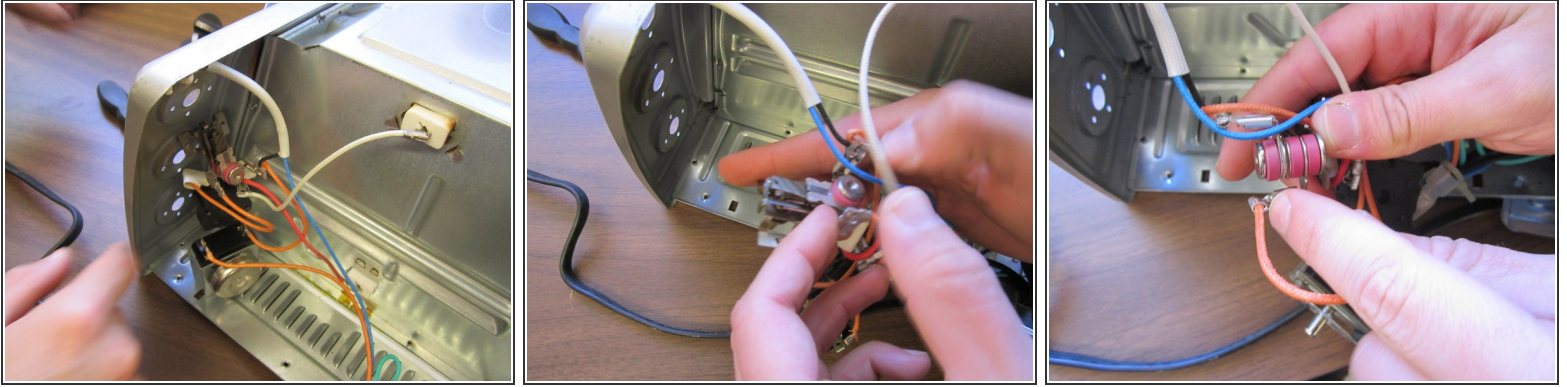
## Step 6 — Removing the Timer, Heat Control, and Mode Control



- Unscrew the timer, heat control, and mode control with a phillips head screw driver.



## Step 7 — Disconnecting Wires and Modules



- Carefully remove each of the heater's modules from the chassis.
- Unclip the wires connecting the modules.